



F137HHD3  
**FlexTwist™ Flexible Twist for WR137, 5.725–6.425 GHz, with interface types PDR70 and PDR70, 900 mm**

## Electrical Specifications

Operating Frequency Band	5.725 – 6.425 GHz
Attenuation	0.09 db/ft   0.30 db/m
Average Power	2000 W
Peak Power	500.0 kW
VSWR	1.03

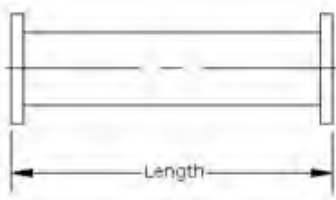
## General Specifications

Component	Flexible Twist
Waveguide Size	WR137   WG14   R70
Interface	PDR70
Interface 2	PDR70
Length	900 mm   35 in

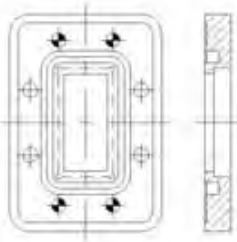
## Mechanical Specifications

Maximum Twist	214.00 °/m   65.00 °/ft
Minimum Bend Radius, Multiple Bends (E Plane)	102.00 mm   4.00 in
Minimum Bend Radius, Multiple Bends (H Plane)	204.00 mm   8.00 in
Pressurization, maximum	30 psi   205 kPa

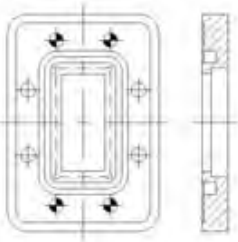
### Component



### Interface



### Interface 2



## Regulatory Compliance/Certifications

<b>Agency</b> RoHS 2011/65/EU China RoHS SJ/T 11364-2006 ISO 9001:2008	<b>Classification</b> Compliant by Exemption Above Maximum Concentration Value (MCV) Designed, manufactured and/or distributed under this quality management system
---	--

# Product Specifications

COMMScope®

F137HHD3

POWERED BY

