

# Product Specifications



## F137CFA2

Flexible Twist for WR137, 5.85–6.425 GHz, with interface types CPR137G and CMR137 Through, 600 mm



## CHARACTERISTICS

### Electrical Specifications

Operating Frequency Band	5.85 – 6.425 GHz
Attenuation	0.09 db/ft   0.30 db/m
Average Power	2000 W
Peak Power	500.0 kW
VSWR	1.03

### General Specifications

Component	Flexible Twist
Waveguide Size	WR137   WG14   R70
Interface	CPR137G
Interface 2	CMR137 Through
Length	600 mm   24 in

### Mechanical Specifications

Maximum Twist	214.00 °/m   65.00 °/ft
Minimum Bend Radius, Multiple Bends (E Plane)	102.00 mm   4.00 in
Minimum Bend Radius, Multiple Bends (H Plane)	204.00 mm   8.00 in
Pressurization, maximum	30 psi   205 kPa

**Component**

**Interface**

**Interface 2**

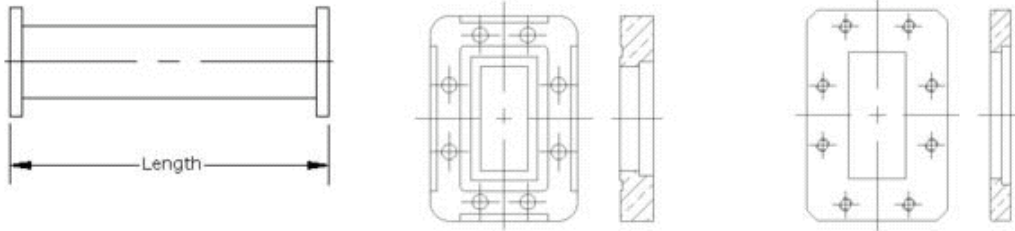
[www.commscope.com/andrew](http://www.commscope.com/andrew)

©2011 CommScope, Inc. All rights reserved.  
All trademarks identified by ® or ™ are registered trademarks or trademarks, respectively, of CommScope. All specifications are subject to change.  
See [www.commscope.com/andrew](http://www.commscope.com/andrew) for the most current information.

page 1 of 2  
5/2/2011

# Product Specifications

F137CFA2



## Regulatory Compliance/Certifications

### Agency

RoHS 2002/95/EC  
China RoHS SJ/T 11364-2006  
ISO 9001:2008

### Classification

Compliant by Exemption  
Above Maximum Concentration Value (MCV)  
Designed, manufactured and/or distributed under this quality management system



[www.commscope.com/andrew](http://www.commscope.com/andrew)

©2011 CommScope, Inc. All rights reserved.  
All trademarks identified by ® or ™ are registered trademarks or trademarks, respectively, of CommScope. All specifications are subject to change.  
See [www.commscope.com/andrew](http://www.commscope.com/andrew) for the most current information.

page 2 of 2  
5/2/2011