



F090HHB4  
**FlexTwist™ Flexible Twist for WR90, 10.7–11.7 GHz, with interface types PDR100 and PDR100, 1000 mm**

## Electrical Specifications

|                          |                        |
|--------------------------|------------------------|
| Operating Frequency Band | 10.7 – 11.7 GHz        |
| Attenuation              | 0.13 db/ft   0.43 db/m |
| Average Power            | 960 W                  |
| Peak Power               | 180.0 kW               |
| VSWR                     | 1.05                   |

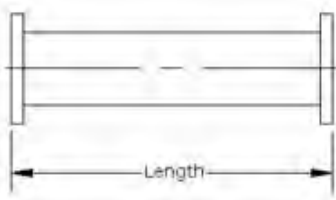
## General Specifications

|                |                    |
|----------------|--------------------|
| Component      | Flexible Twist     |
| Waveguide Size | WR90   WG16   R100 |
| Interface      | PDR100             |
| Interface 2    | PDR100             |
| Length         | 1000 mm   39 in    |

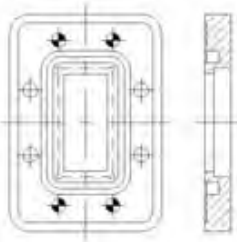
## Mechanical Specifications

|   |                         |
|---|-------------------------|
| Maximum Twist                                 | 310.00 °/m   95.00 °/ft |
| Minimum Bend Radius, Multiple Bends (E Plane) | 64.00 mm   2.50 in      |
| Minimum Bend Radius, Multiple Bends (H Plane) | 127.00 mm   5.00 in     |
| Pressurization, maximum                       | 45 psi   310 kPa        |

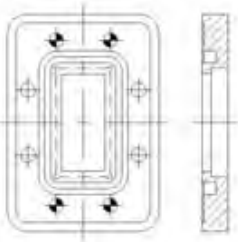
### Component



### Interface



### Interface 2



## Regulatory Compliance/Certifications

|   |  |
|---|--|
| <b>Agency</b><br>RoHS 2011/65/EU<br>China RoHS SJ/T 11364-2006<br>ISO 9001:2008 | <b>Classification</b><br>Compliant by Exemption<br>Above Maximum Concentration Value (MCV)<br>Designed, manufactured and/or distributed under this quality management system |
|---|--|

# Product Specifications

COMMScope®

F090HHB4

POWERED BY

