



F090CMS3
FlexTwist™ Flexible Twist for WR90, 8.2–12.4 GHz, with interface types CPR90G and UBR100, 900 mm

Electrical Specifications

Operating Frequency Band	8.2 – 12.4 GHz
Attenuation	0.13 db/ft 0.43 db/m
Average Power	960 W
Peak Power	180.0 kW
VSWR	1.10

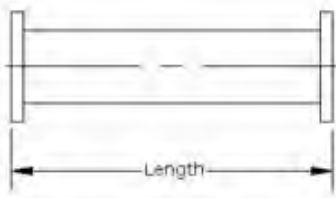
General Specifications

Component	Flexible Twist
Waveguide Size	WR90 WG16 R100
Interface	CPR90G
Interface 2	UBR100
Length	900 mm 35 in

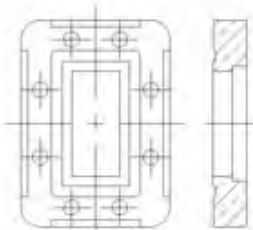
Mechanical Specifications

Maximum Twist	310.00 °/m 95.00 °/ft
Minimum Bend Radius, Multiple Bends (E Plane)	64.00 mm 2.50 in
Minimum Bend Radius, Multiple Bends (H Plane)	127.00 mm 5.00 in
Pressurization, maximum	45 psi 310 kPa

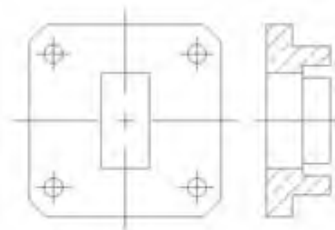
Component



Interface



Interface 2



Regulatory Compliance/Certifications

Agency

RoHS 2011/65/EU
China RoHS SJ/T 11364-2006
ISO 9001:2008

Classification

Compliant by Exemption
Above Maximum Concentration Value (MCV)
Designed, manufactured and/or distributed under this quality management system

Product Specifications

COMMScope®

F090CMS3

POWERED BY

