



F075HHS4
FlexTwist™ Flexible Twist for WR75, 10.0–15.0 GHz, with interface types PDR120 and PDR120, 1000 mm

Electrical Specifications

Operating Frequency Band	10.0 – 15.0 GHz
Attenuation	0.18 db/ft 0.59 db/m
Average Power	750 W
Peak Power	140.0 kW
VSWR	1.13

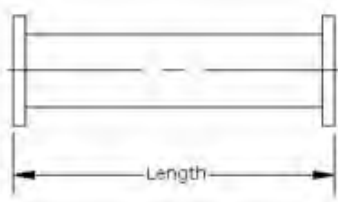
General Specifications

Component	Flexible Twist
Waveguide Size	WR75 WG17 R120
Interface	PDR120
Interface 2	PDR120
Length	1000 mm 39 in

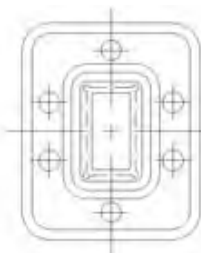
Mechanical Specifications

Maximum Twist	360.00 °/m 110.00 °/ft
Minimum Bend Radius, Multiple Bends (E Plane)	64.00 mm 2.50 in
Minimum Bend Radius, Multiple Bends (H Plane)	115.00 mm 4.50 in
Pressurization, maximum	45 psi 310 kPa

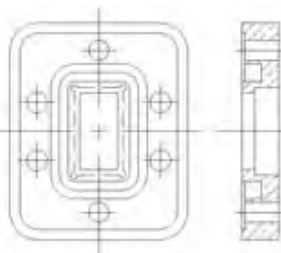
Component



Interface



Interface 2



Regulatory Compliance/Certifications

Agency

RoHS 2011/65/EU
China RoHS SJ/T 11364-2006
ISO 9001:2008

Classification

Compliant by Exemption
Above Maximum Concentration Value (MCV)
Designed, manufactured and/or distributed under this quality management system

Product Specifications

COMMScope®

F075HHS4

POWERED BY

