



F028KMS5
FlexTwist™ Flexible Twist for WR28, 26.5–40.1 GHz, with interface types PBR320 and UBR320, 1200 mm

Electrical Specifications

Operating Frequency Band	26.5 – 40.1 GHz
Attenuation	1.00 db/ft 3.28 db/m
Average Power	75 W
Peak Power	20.0 kW
VSWR	1.30

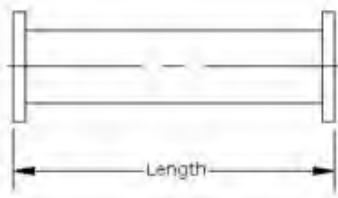
General Specifications

Component	Flexible Twist
Waveguide Size	WR28 WG22 R320
Interface	PBR320
Interface 2	UBR320
Length	1200 mm 47 in

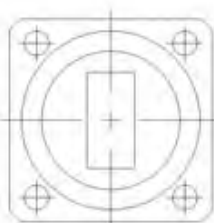
Mechanical Specifications

Maximum Twist	510.00 °/m 155.00 °/ft
Minimum Bend Radius, Multiple Bends (E Plane)	38.00 mm 1.50 in
Minimum Bend Radius, Multiple Bends (H Plane)	76.00 mm 3.00 in
Pressurization, maximum	45 psi 310 kPa

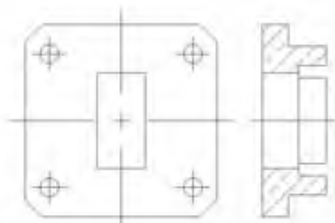
Component



Interface



Interface 2



Regulatory Compliance/Certifications

Agency

RoHS 2011/65/EU
China RoHS SJ/T 11364-2006
ISO 9001:2008

Classification

Compliant by Exemption
Above Maximum Concentration Value (MCV)
Designed, manufactured and/or distributed under this quality management system

Product Specifications

COMMScope®

F028KMS5

POWERED BY

