

# Product Specifications



## F028KKB1

Flexible Twist for WR28, 27.5–29.5 GHz, with interface types PBR320 and PBR320, 300 mm



## CHARACTERISTICS

### Electrical Specifications

Operating Frequency Band	27.5 – 29.5 GHz
Attenuation	1.00 db/ft   3.28 db/m
Average Power	75 W
Peak Power	20.0 kW
VSWR	1.20

### General Specifications

Component	Flexible Twist
Waveguide Size	WR28   WG22   R320
Interface	PBR320
Interface 2	PBR320
Length	300 mm   12 in

### Mechanical Specifications

Maximum Twist	510.00 °/m   155.00 °/ft
Minimum Bend Radius, Multiple Bends (E Plane)	38.00 mm   1.50 in
Minimum Bend Radius, Multiple Bends (H Plane)	76.00 mm   3.00 in
Pressurization, maximum	45 psi   310 kPa

**Component**

**Interface**

**Interface 2**

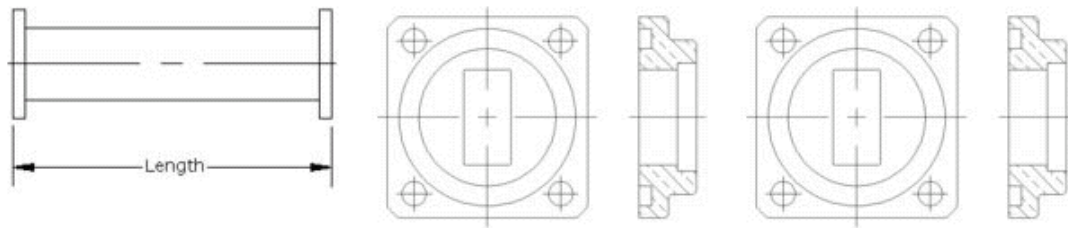
[www.commscope.com/andrew](http://www.commscope.com/andrew)

©2011 CommScope, Inc. All rights reserved.  
All trademarks identified by ® or ™ are registered trademarks or trademarks, respectively, of CommScope. All specifications are subject to change.  
See [www.commscope.com/andrew](http://www.commscope.com/andrew) for the most current information.

page 1 of 2  
5/2/2011

# Product Specifications

F028KKB1



## Regulatory Compliance/Certifications

### Agency

RoHS 2002/95/EC

China RoHS SJ/T 11364-2006

ISO 9001:2008

### Classification

Compliant by Exemption

Above Maximum Concentration Value (MCV)

Designed, manufactured and/or distributed under this quality management system

