



E090MH091L091SG  
90° E Plane Swept Bend for WR90, 8.2–12.4 GHz, with interface types PDR100 and UDR100, 91 mm x 91 mm, gray

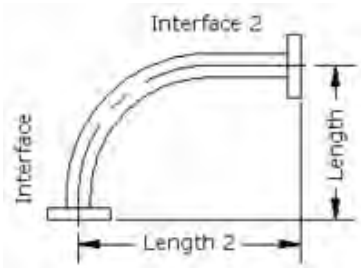
## Electrical Specifications

Operating Frequency Band 8.2 – 12.4 GHz  
VSWR 1.05

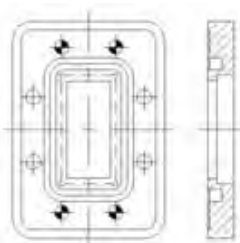
## General Specifications

Component	90° E Plane Swept Bend
Waveguide Size	WR90   WG16   R100
Finish	Gray
Interface	PDR100
Interface 2	UDR100
Length	91 mm   4 in
Length 2	91 mm   4 in

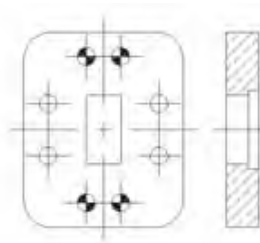
### Component



### Interface



### Interface 2



## Regulatory Compliance/Certifications

Agency	Classification
ISO 9001:2008	Designed, manufactured and/or distributed under this quality management system