



E11F05P92

Triplexer 900/1800/UMTS, dc bypass on all ports

Electrical Specifications

dc Pass-through	Band 1 Band 2 Band 3
3rd Order IMD Test Method	Two +43 dBm carriers
3rd Order IMD, maximum	-110 dBm
Isolation Between Paths, minimum	50.0 dB
Lightning Surge Current	10 kA
Lightning Surge Current Waveform	8/20 waveform
Operating Power, maximum	250 W
Return Loss, minimum	21.00 dB
Return Loss, typical	24.00 dB

Electrical Specifications (Branch 1)

License Band	EGSM 900 LTE 800
Operating Frequency Band	790 – 960 MHz
Insertion Loss, typical	0.15 dB

Electrical Specifications (Branch 2)

License Band	DCS 1800
Operating Frequency Band	1710 – 1880 MHz
Insertion Loss, typical	0.20 dB

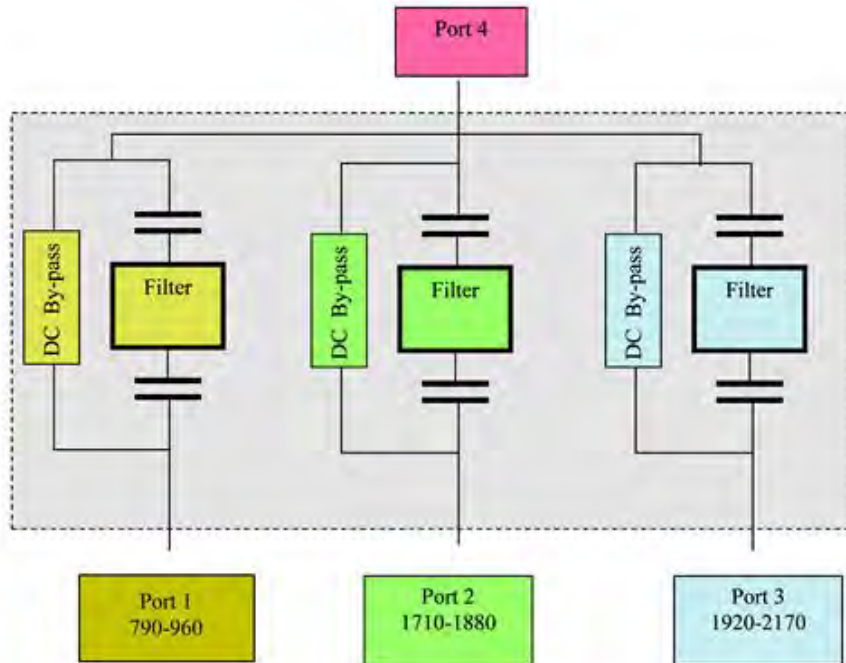
Electrical Specifications (Branch 3)

Insertion Loss, typical	0.20 dB
License Band	UMTS
Operating Frequency Band	1920 – 2170 MHz

E11F05P92



Block Diagram



General Specifications

Product Type	Triplexer
Application	Indoor Outdoor
Includes	Mounting hardware

Mechanical Specifications

Color	Gray
Connector Interface	7-16 DIN Female
Connector Interface Style	Medium neck
Mounting Pipe Diameter	40–160 mm
Mounting Pipe Hardware	Band clamps

Environmental Specifications

Ingress Protection Test Method	IEC 60529:2001, IP67
Operating Temperature	-40 °C to +60 °C (-40 °F to +140 °F)
Relative Humidity	Up to 100%

Dimensions

Depth	192.0 mm 7.6 in
Height	151.0 mm 5.9 in

Product Specifications

COMMSCOPE®

E11F05P92

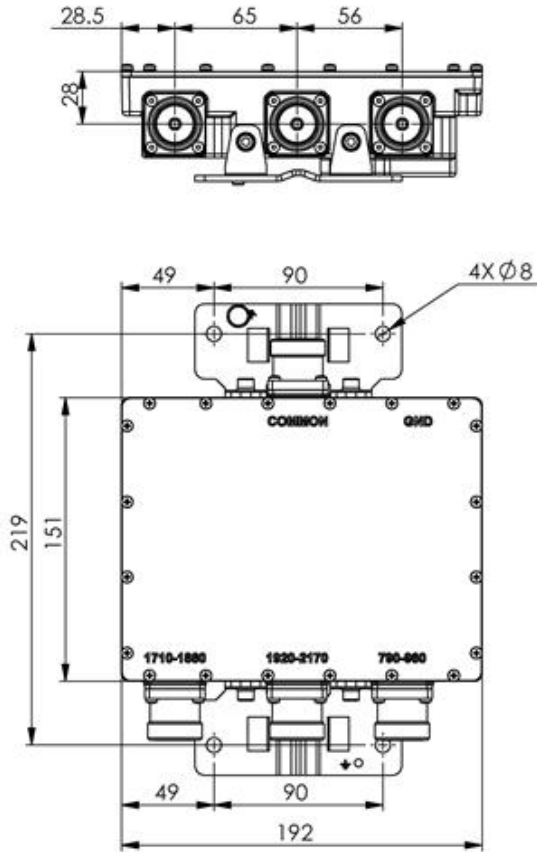


Volume 1.6 L
Width 56.0 mm | 2.2 in
Weight, without mounting hardware 2.6 kg | 5.7 lb

E11F05P92



Outline Drawing



Regulatory Compliance/Certifications

Agency	Classification
ISO 9001:2008	Designed, manufactured and/or distributed under this quality management system