



## Through Ceiling Mounting Kit

Applies to PEAR™ S4935i, M4969(i), S5491(i)

[Model No: 62-17-09]

### DESCRIPTION:

Through ceiling mounting conceals the antenna with only the nose protruding through the ceiling. The base plate is hidden above the false ceiling which results in a 40% reduction of the visible antenna footprint.

### ORDER OPTIONS:

#### MOUNTING KIT AND ANTENNA ARE ORDERED SEPARATELY:

The end customer needs to mount the through ceiling kit to the antenna.

**Installations Steps:** Steps 1-5 are relevant.

#### PRE-ASSEMBLED:

The *Through Ceiling Mounting Kit* is pre-assembled to the antenna in Galtronics' factory.

**Installations Steps:** Only steps 4-5 are relevant.



- » **Diameter of Cover:** 210mm
- » **Height of Nose of Antenna:** 71-79mm
- » **Ceiling Height:** 14-22mm
- » **Height of Antenna above ceiling:** 31mm

### MECHANICAL SPECIFICATIONS

#### Operating Temperature

32 to 158 °F (0 to +70°C)

#### Environmental Conditions

Indoor

#### Dimensions (Diameter / Height)

13.4" / 2.9" (340mm / 75mm)

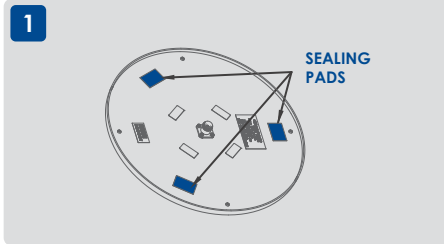
#### Weight

0.5 lbs (230g)

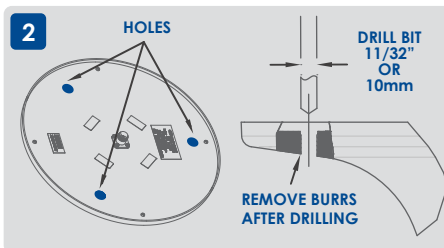
#### RoHS

compliant

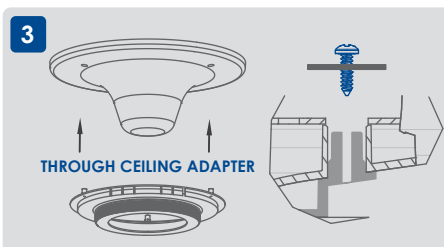
### INSTALLATION STEPS:



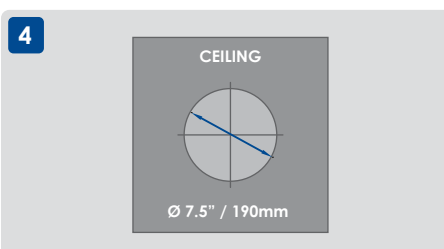
Remove the three 'through ceiling hole' sealing pads from the bottom plate as outlined in figure 1.



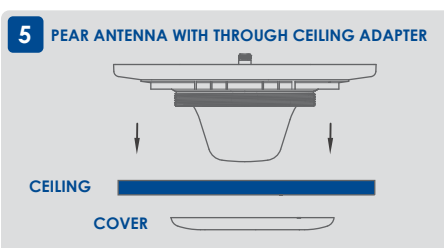
Using the open 'Through Ceiling Holes' of the bottom plate, drill three holes into the radome with a 1 1/32" or 10mm drill bit. Remove any burrs after drilling.



Attach the 'Through Ceiling Adapter' to the antenna and fasten it as outline in figure 3 using the three self-taper screws and washer provided with the mounting kit.



Cut a hole with a diameter of Ø7.5" / 190mm into the ceiling where the antenna is supposed to be installed.



Put the antenna with attached 'Through Ceiling Adapter' through the hole in the ceiling and fasten the antenna to the ceiling with the provided 'Through Ceiling Cover'.