

# inorax-ST Cabinets

## inorax-ST Network Cabinet

Inorax-ST, a cost effective network rack cabinet system fulfills high density cabling and data center requirements. With its modular structure, a practical option for your future plans. Offers advanced fiber and copper cable management options; helps simplify cable installation and maintenance while providing maximum cable capacity for your high-density cabling requirements. A wide range of cable management accessories is available to ensure perfect management of copper, fiber cables and 19" equipment. Flat-pack option enables savings up to 60% in the transport cost and warehouse space.

### Technical Features

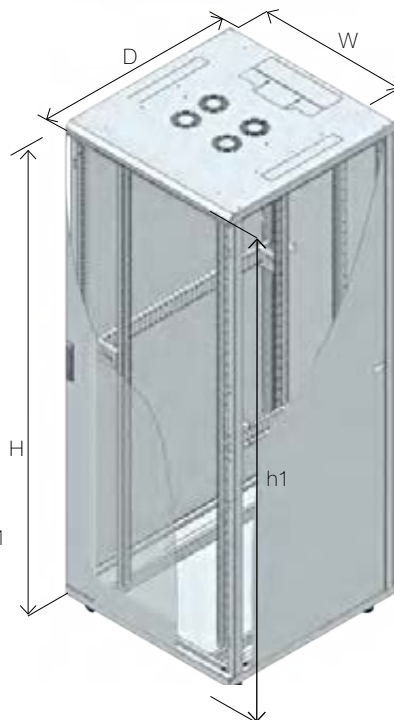
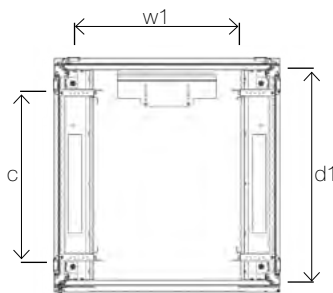
|                            |   |
|----------------------------|---|
| <b>Material</b>            | 1,2 - 1,5 - 2mm Steel   |
| <b>Color</b>               | RAL 7035 or RAL 9005  |
| <b>Compliance</b>          | RoHS, UL Certified  |
| <b>Packaging</b>           | Assembled or unassembled  |
| <b>Maximum Static Load</b> | Up to 1500 kg.  |
| <b>Finish</b>              | Doors, side panels, top and bottom covers<br>Electrostatic Powder Paint, 19" mounting rails:<br>Zinc-plated |

|                            |  |
|----------------------------|--|
| <b>Related Accessories</b> | Cable Organizer<br>Blanking Panels<br>Cable Channels |
|----------------------------|--|



### Standard Configuration:

- ✓ Front door with safety glass
- ✓ Solid Side Panels with cylindrical locks and latches
- ✓ Solid Rear Panel with cylindrical locks
- ✓ Internal top sheet with 3 cable entry and fan cut-outs
- ✓ 2 Pairs of depth adjustable heavy duty 19" Mounting Rails
- ✓ 2 Pairs of Adjustable Feet
- ✓ Front Door with swing-handle single point lock
- ✓ Color RAL 7035 or RAL 9005
- ✓ RoHS compliant, UL and Gost-R Certified
- ✓ Bottom cover



### Order Information

| Height U | Outer Width (W) mm | Outer Depth (D) mm | Outer Height (H) mm | Inner Width (w1) mm | Inner Depth (d1) mm | Inner Height (h1) mm | 19" Rails Adjustable Depth Range (c) | Weight kg | Part No     |
|----------|--------------------|--------------------|---------------------|---------------------|---------------------|----------------------|--------------------------------------|-----------|-------------|
| 16U      | 600                | 600                | 878                 | 503                 | 550                 | 718                  | 123 - 373                            | 52,82     | CSN-X-1666A |
| 22U      | 600                | 600                | 1144                | 503                 | 550                 | 984                  | 123 - 373                            | 62,21     | CSN-X-2266A |
| 22U      | 600                | 800                | 1144                | 503                 | 750                 | 984                  | 123 - 573                            | 70,66     | CSN-X-2268A |
| 26U      | 600                | 600                | 1322                | 503                 | 550                 | 1162                 | 123 - 373                            | 68,49     | CSN-X-2666A |
| 26U      | 600                | 800                | 1322                | 503                 | 750                 | 1162                 | 123 - 573                            | 77,60     | CSN-X-2668A |
| 26U      | 800                | 800                | 1322                | 703                 | 750                 | 1162                 | 123 - 573                            | 91,62     | CSN-X-2688A |
| 32U      | 600                | 600                | 1588                | 503                 | 550                 | 1428                 | 123 - 373                            | 77,88     | CSN-X-3266A |
| 32U      | 600                | 800                | 1588                | 503                 | 750                 | 1428                 | 123 - 573                            | 88,01     | CSN-X-3268A |
| 32U      | 800                | 800                | 1588                | 703                 | 750                 | 1428                 | 123 - 573                            | 103,14    | CSN-X-3288A |
| 36U      | 600                | 600                | 1766                | 503                 | 550                 | 1723                 | 123 - 373                            | 84,17     | CSN-X-3666A |
| 36U      | 600                | 800                | 1766                | 503                 | 750                 | 1723                 | 123 - 573                            | 94,95     | CSN-X-3668A |
| 36U      | 800                | 800                | 1766                | 703                 | 750                 | 1723                 | 123 - 573                            | 109,81    | CSN-X-3688A |
| 39U      | 800                | 800                | 1900                | 703                 | 750                 | 1740                 | 123 - 573                            | 115,56    | CSN-X-3988A |
| 42U      | 600                | 600                | 2033                | 503                 | 550                 | 1873                 | 123 - 373                            | 93,62     | CSN-X-4266A |
| 42U      | 600                | 800                | 2033                | 503                 | 750                 | 1873                 | 123 - 573                            | 105,41    | CSN-X-4268A |
| 42U      | 600                | 1000               | 2033                | 503                 | 950                 | 1873                 | 123 - 773                            | 113,85    | CSN-X-4260A |
| 42U      | 800                | 800                | 2033                | 703                 | 750                 | 1873                 | 123 - 573                            | 121,31    | CSN-X-4288A |
| 42U      | 800                | 1000               | 2033                | 703                 | 950                 | 1873                 | 123 - 773                            | 133,54    | CSN-X-4280A |
| 47U      | 600                | 600                | 2255                | 503                 | 550                 | 2095                 | 123 - 373                            | 101,47    | CSN-X-4766A |
| 47U      | 600                | 800                | 2255                | 503                 | 750                 | 2095                 | 123 - 573                            | 114,09    | CSN-X-4768A |
| 47U      | 600                | 1000               | 2255                | 503                 | 950                 | 2095                 | 123 - 773                            | 123,20    | CSN-X-4760A |
| 47U      | 800                | 800                | 2255                | 703                 | 750                 | 2095                 | 123 - 573                            | 130,91    | CSN-X-4788A |
| 47U      | 800                | 1000               | 2255                | 703                 | 950                 | 2095                 | 123 - 773                            | 144,10    | CSN-X-4780A |

X (Color code): 7:RAL 7035 Light Grey, 9:RAL 9005 Black



[www.facebook.com/canovategroup](http://www.facebook.com/canovategroup)



[www.linkedin.com/company/canovate-group](http://www.linkedin.com/company/canovate-group)



canovatesales

# inorax-ST Cabinets

## Components of inorax-ST

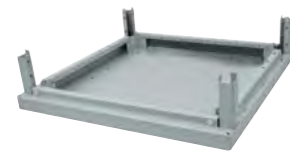
### Top Cover



**Material** 1.5 mm Steel **Finish** Electrostatic Powder Paint  
**Color** RAL 7035 (Light Grey) and RAL 9005 (Black)

| W (mm) | D (mm) | H (mm) | Weight kg | Part No          |
|--------|--------|--------|-----------|------------------|
| 600    | 600    | 154    | 10,79     | CSZ-X-YY660-0401 |
| 600    | 800    | 154    | 12,70     | CSZ-X-YY680-0401 |
| 600    | 1000   | 154    | 14,62     | CSZ-X-YY600-0401 |
| 600    | 1100   | 154    | 15,47     | CSZ-X-YY610-0401 |
| 600    | 1200   | 154    | 16,42     | CSZ-X-YY620-0401 |
| 800    | 800    | 154    | 16,76     | CSZ-X-YY880-0401 |
| 800    | 1000   | 154    | 19,62     | CSZ-X-YY800-0401 |
| 800    | 1100   | 154    | 20,95     | CSZ-X-YY810-0401 |
| 800    | 1200   | 154    | 22,39     | CSZ-X-YY820-0401 |

### Bottom Cover



**Material** 1.5 mm Steel **Finish** Electrostatic Powder Paint  
**Color** RAL 7035 (Light Grey) and RAL 9005 (Black)

| W (mm) | D (mm) | H (mm) | Weight kg | Part No          |
|--------|--------|--------|-----------|------------------|
| 600    | 600    | 154    | 11,16     | CSZ-X-YY660-0403 |
| 600    | 800    | 154    | 13,07     | CSZ-X-YY680-0403 |
| 600    | 1000   | 154    | 14,99     | CSZ-X-YY600-0403 |
| 600    | 1100   | 154    | 15,94     | CSZ-X-YY610-0403 |
| 600    | 1200   | 154    | 16,90     | CSZ-X-YY620-0403 |
| 800    | 800    | 154    | 17,17     | CSZ-X-YY880-0403 |
| 800    | 1000   | 154    | 20,04     | CSZ-X-YY800-0403 |
| 800    | 1100   | 154    | 21,47     | CSZ-X-YY810-0403 |
| 800    | 1200   | 154    | 22,91     | CSZ-X-YY820-0403 |

X : Color code = 7: RAL 7035 (Grey); 9: RAL 9005 (Black)

### Vertical Profiles



**Material** 1.5 mm Steel **Finish** Electrostatic Powder Paint  
**Color** RAL 7035 (Light Grey) and RAL 9005 (Black)

| H (U) | W (mm) | D (mm) | H (mm) | Weight kg | Part No          |
|-------|--------|--------|--------|-----------|------------------|
| 16U   | 48,5   | 57     | 754    | 1,36      | CSZ-X-16YY0-0300 |
| 22U   | 48,5   | 57     | 1021   | 1,84      | CSZ-X-22YY0-0300 |
| 26U   | 48,5   | 57     | 1199   | 2,17      | CSZ-X-26YY0-0300 |
| 32U   | 48,5   | 57     | 1465   | 2,65      | CSZ-X-32YY0-0300 |
| 36U   | 48,5   | 57     | 1643   | 2,97      | CSZ-X-36YY0-0300 |
| 39U   | 48,5   | 57     | 1777   | 3,21      | CSZ-X-39YY0-0300 |
| 42U   | 48,5   | 57     | 1910   | 3,46      | CSZ-X-42YY0-0300 |
| 47U   | 48,5   | 57     | 2132   | 3,86      | CSZ-X-47YY0-0300 |

X : Color code = 7: RAL 7035 (Grey); 9: RAL 9005 (Black)

### 19" Mounting Rails



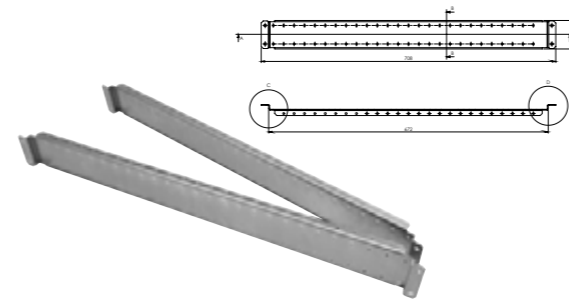
**Material** 2 mm Steel **Finish** Zinc-Plated  
**Color** Metal Grey

| H (U) | W (mm) | D (mm) | H (mm) | Weight kg | Part No          |
|-------|--------|--------|--------|-----------|------------------|
| 16U   | 33     | 52     | 753    | 0,96      | CSZ-0-16YY0-0600 |
| 22U   | 33     | 52     | 1020   | 1,29      | CSZ-0-22YY0-0600 |
| 26U   | 33     | 52     | 1198   | 1,52      | CSZ-0-26YY0-0600 |
| 32U   | 33     | 52     | 1464   | 1,85      | CSZ-0-32YY0-0600 |
| 36U   | 33     | 52     | 1642   | 2,08      | CSZ-0-36YY0-0600 |
| 39U   | 33     | 52     | 1776   | 2,25      | CSZ-0-39YY0-0600 |
| 42U   | 33     | 52     | 1909   | 2,42      | CSZ-0-42YY0-0600 |
| 47U   | 33     | 52     | 2131   | 2,70      | CSZ-0-47YY0-0600 |

X : Color code = 7: RAL 7035 (Grey); 9: RAL 9005 (Black)

# inorax-ST Cabinets

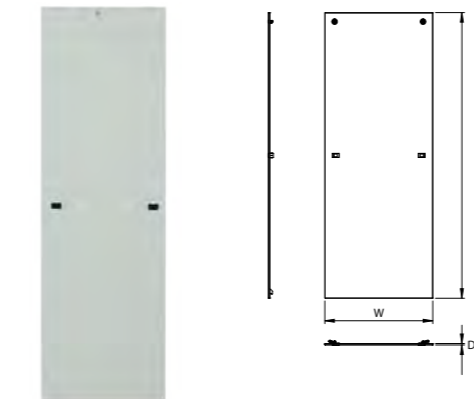
## Side Support Rails



**Material** 1.5 mm Steel **Finish** Zinc-Plated  
**Color** Metal Grey

| Cabinet W (mm) | Cabinet D (mm) | Weight kg | Part No          |
|----------------|----------------|-----------|------------------|
| 600            | 600            | 0,75      | CSZ-0-YY660-0700 |
| 600            | 800            | 0,80      | CSZ-0-YY680-0700 |
| 600            | 1000           | 0,85      | CSZ-0-YY600-0700 |
| 600            | 1100           | 0,87      | CSZ-0-YY610-0700 |
| 600            | 1200           | 0,90      | CSZ-0-YY620-0700 |
| 800            | 800            | 0,85      | CSZ-0-YY880-0700 |
| 800            | 1000           | 0,92      | CSZ-0-YY800-0700 |
| 800            | 1100           | 0,97      | CSZ-0-YY810-0700 |
| 800            | 1200           | 1,02      | CSZ-0-YY820-0700 |

## Side Panel

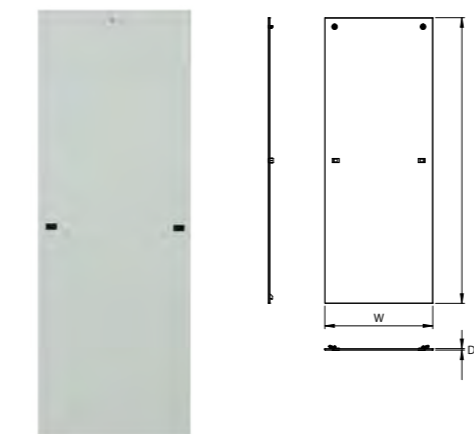


**Material** 1.5 mm Steel **Finish** Electrostatic Powder Paint  
**Color** RAL 7035 (Light Grey) and RAL 9005 (Black)

| H (U) | W (mm) | D (mm) | H (mm) | Part No          |
|-------|--------|--------|--------|------------------|
| 16U   | 600    | 22     | 749    | CSZ-X-16Y60-0501 |
| 22U   | 600    | 22     | 1016   | CSZ-X-22Y60-0501 |
| 22U   | 800    | 22     | 1016   | CSZ-X-22Y80-0501 |
| 26U   | 600    | 22     | 1194   | CSZ-X-26Y60-0501 |
| 26U   | 800    | 22     | 1194   | CSZ-X-26Y80-0501 |
| 26U   | 1000   | 22     | 1194   | CSZ-X-26Y00-0501 |
| 32U   | 600    | 22     | 1460   | CSZ-X-32Y60-0501 |
| 32U   | 800    | 22     | 1460   | CSZ-X-32Y80-0501 |
| 36U   | 600    | 22     | 1638   | CSZ-X-36Y60-0501 |
| 36U   | 800    | 22     | 1638   | CSZ-X-36Y80-0501 |
| 36U   | 1000   | 22     | 1638   | CSZ-X-36Y00-0501 |
| 36U   | 1200   | 22     | 1638   | CSZ-X-36Y20-0501 |
| 39U   | 800    | 22     | 1772   | CSZ-X-39Y80-0501 |
| 39U   | 1000   | 22     | 1772   | CSZ-X-39Y00-0501 |
| 42U   | 600    | 22     | 1905   | CSZ-X-42Y60-0501 |
| 42U   | 800    | 22     | 1905   | CSZ-X-42Y80-0501 |
| 42U   | 1000   | 22     | 1905   | CSZ-X-42Y00-0501 |
| 42U   | 1100   | 22     | 1905   | CSZ-X-42Y10-0501 |
| 42U   | 1200   | 22     | 1905   | CSZ-X-42Y20-0501 |
| 47U   | 600    | 22     | 2127   | CSZ-X-47Y60-0501 |
| 47U   | 800    | 22     | 2127   | CSZ-X-47Y80-0501 |
| 47U   | 1000   | 22     | 2127   | CSZ-X-47Y00-0501 |
| 47U   | 1100   | 22     | 2127   | CSZ-X-47Y10-0501 |
| 47U   | 1200   | 22     | 2127   | CSZ-X-47Y20-0501 |

X : Color code = 7: RAL 7035 (Grey); 9: RAL 9005 (Black)

## Rear Metal Solid Panel



**Material** 2 mm Steel **Finish** Zinc-Plated  
**Color** Metal Grey

| H (U) | W (mm) | D (mm) | H (mm) | Weight kg | Part No          |
|-------|--------|--------|--------|-----------|------------------|
| 16U   | 600    | 23     | 752    | 5,11      | CSZ-X-166Y0-0901 |
| 22U   | 600    | 23     | 1018   | 6,76      | CSZ-X-226Y0-0901 |
| 22U   | 800    | 23     | 1018   | 8,79      | CSZ-X-228Y0-0901 |
| 26U   | 600    | 23     | 1196   | 7,86      | CSZ-X-266Y0-0901 |
| 26U   | 800    | 23     | 1196   | 10,22     | CSZ-X-268Y0-0901 |
| 32U   | 600    | 23     | 1463   | 9,5       | CSZ-X-326Y0-0901 |
| 32U   | 800    | 23     | 1463   | 12,37     | CSZ-X-328Y0-0901 |
| 36U   | 600    | 23     | 1641   | 10,6      | CSZ-X-366Y0-0901 |
| 36U   | 800    | 23     | 1641   | 13,80     | CSZ-X-368Y0-0901 |
| 39U   | 800    | 23     | 1774   | 14,88     | CSZ-X-398Y0-0901 |
| 42U   | 600    | 23     | 1907   | 12,25     | CSZ-X-426Y0-0901 |
| 42U   | 800    | 23     | 1907   | 15,95     | CSZ-X-428Y0-0901 |
| 47U   | 600    | 23     | 2130   | 13,62     | CSZ-X-476Y0-0901 |
| 47U   | 800    | 23     | 2130   | 17,74     | CSZ-X-478Y0-0901 |

X : Color code = 7: RAL 7035 (Grey); 9: RAL 9005 (Black)



www.facebook.com/canovategroup



www.linkedin.com/company/canovate-group



canovatesales



www.facebook.com/canovategroup



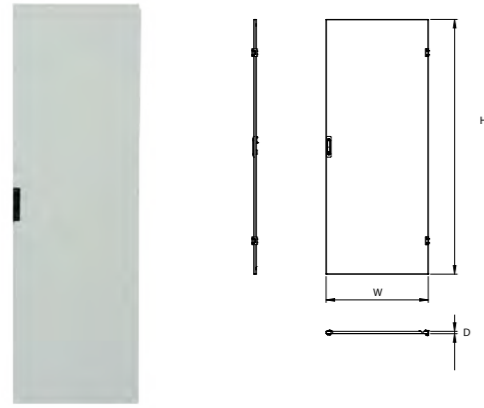
www.linkedin.com/company/canovate-group



canovatesales

# inorax-ST Cabinets

## Metal Solid Door

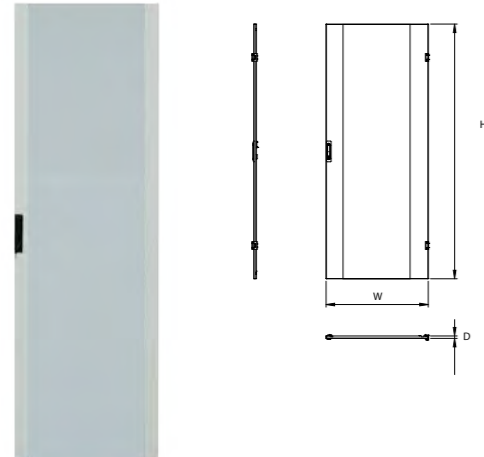


**Material** 1.2 mm Steel **Finish** Electrostatic Powder Paint  
**Color** RAL 7035 (Light Grey) and RAL 9005 (Black)

| H (U) | W (mm) | D (mm) | H (mm) | Weight kg | Part No          |
|-------|--------|--------|--------|-----------|------------------|
| 16U   | 600    | 22     | 749    | 6,87      | CSZ-X-166Y0-0902 |
| 22U   | 600    | 22     | 1016   | 8,94      | CSZ-X-226Y0-0902 |
| 22U   | 800    | 22     | 1016   | 11,26     | CSZ-X-228Y0-0902 |
| 26U   | 600    | 22     | 1194   | 10,32     | CSZ-X-266Y0-0902 |
| 26U   | 800    | 22     | 1194   | 12,97     | CSZ-X-268Y0-0902 |
| 32U   | 600    | 22     | 1460   | 12,39     | CSZ-X-326Y0-0902 |
| 32U   | 800    | 22     | 1460   | 15,54     | CSZ-X-328Y0-0902 |
| 36U   | 600    | 22     | 1638   | 13,77     | CSZ-X-366Y0-0902 |
| 36U   | 800    | 22     | 1638   | 17,26     | CSZ-X-368Y0-0902 |
| 39U   | 800    | 22     | 1772   | 18,54     | CSZ-X-398Y0-0902 |
| 42U   | 600    | 22     | 1905   | 15,84     | CSZ-X-426Y0-0902 |
| 42U   | 800    | 22     | 1905   | 19,83     | CSZ-X-428Y0-0902 |
| 47U   | 600    | 22     | 2127   | 17,56     | CSZ-X-476Y0-0902 |
| 47U   | 800    | 22     | 2127   | 21,97     | CSZ-X-478Y0-0902 |

X : Color code = 7: RAL 7035 (Grey); 9: RAL 9005 (Black)

## Glass Door

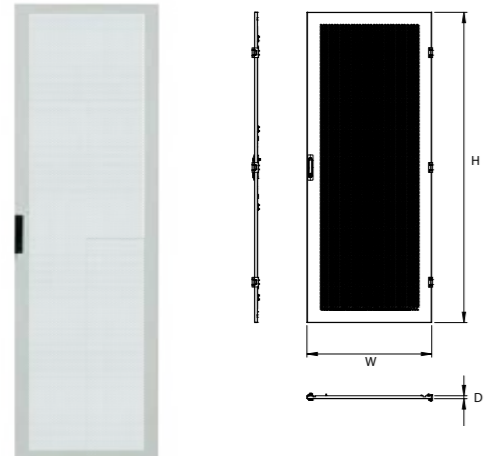


**Material** 1.2 mm Steel **Finish** Electrostatic Powder Paint  
**Color** RAL 7035 (Light Grey) and RAL 9005 (Black)

| H (U) | W (mm) | D (mm) | H (mm) | Weight kg | Part No          |
|-------|--------|--------|--------|-----------|------------------|
| 16U   | 600    | 22     | 749    | 5,53      | CSZ-X-166Y0-0903 |
| 22U   | 600    | 22     | 1016   | 7,42      | CSZ-X-226Y0-0903 |
| 22U   | 800    | 22     | 1016   | 9,77      | CSZ-X-228Y0-0903 |
| 26U   | 600    | 22     | 1194   | 8,68      | CSZ-X-266Y0-0903 |
| 26U   | 800    | 22     | 1194   | 11,42     | CSZ-X-268Y0-0903 |
| 32U   | 600    | 22     | 1460   | 10,56     | CSZ-X-326Y0-0903 |
| 32U   | 800    | 22     | 1460   | 13,9      | CSZ-X-328Y0-0903 |
| 36U   | 600    | 22     | 1638   | 11,82     | CSZ-X-366Y0-0903 |
| 36U   | 800    | 22     | 1638   | 15,55     | CSZ-X-368Y0-0903 |
| 39U   | 800    | 22     | 1772   | 16,79     | CSZ-X-398Y0-0903 |
| 42U   | 600    | 22     | 1905   | 13,7      | CSZ-X-426Y0-0903 |
| 42U   | 800    | 22     | 1905   | 18,02     | CSZ-X-428Y0-0903 |
| 47U   | 600    | 22     | 2127   | 15,27     | CSZ-X-476Y0-0903 |
| 47U   | 800    | 22     | 2127   | 20,09     | CSZ-X-478Y0-0903 |

X : Color code = 7: RAL 7035 (Grey); 9: RAL 9005 (Black)

## Perforated Flat Door

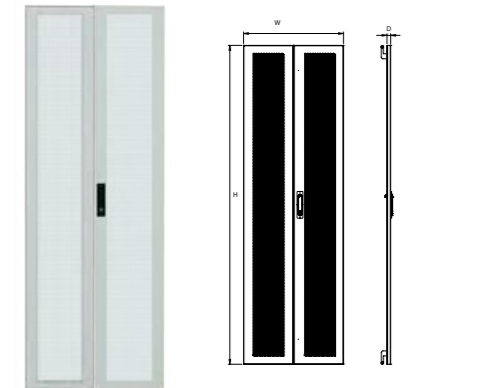


**Material** 1.2 mm Steel **Color** RAL 7035 (Light Grey) and RAL 9005 (Black)  
**Finish** Electrostatic Powder Paint **Perforation Rate** 67%

| H (U) | W (mm) | D (mm) | H (mm) | Weight kg | Part No          |
|-------|--------|--------|--------|-----------|------------------|
| 26U   | 600    | 22     | 1194   | 7,81      | CSZ-X-266Y0-0904 |
| 36U   | 600    | 22     | 1638   | 10,15     | CSZ-X-366Y0-0904 |
| 39U   | 800    | 22     | 1772   | 14,02     | CSZ-X-398Y0-0904 |
| 42U   | 600    | 22     | 1905   | 11,80     | CSZ-X-426Y0-0904 |
| 42U   | 800    | 22     | 1905   | 15,17     | CSZ-X-428Y0-0904 |
| 47U   | 600    | 22     | 2127   | 12,97     | CSZ-X-476Y0-0904 |
| 47U   | 800    | 22     | 2127   | 16,69     | CSZ-X-478Y0-0904 |

X : Color code = 7: RAL 7035 (Grey); 9: RAL 9005 (Black)

## Double Perforated Door



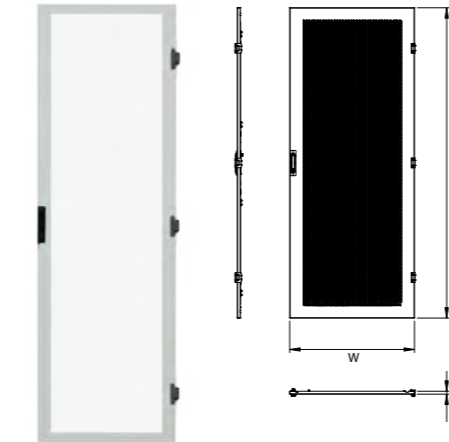
**Material** 1.2 mm Steel **Color** RAL 7035 (Light Grey) and RAL 9005 (Black)  
**Finish** Electrostatic Powder Paint **Perforation Rate** 67%

| H (U) | W (mm) | D (mm) | H (mm) | Weight kg | Part No          |
|-------|--------|--------|--------|-----------|------------------|
| 26U   | 600    | 22     | 1194   | 11,99     | CSZ-X-266Y0-0908 |
| 36U   | 600    | 22     | 1638   | 15,70     | CSZ-X-366Y0-0908 |
| 39U   | 800    | 22     | 1772   | 21,19     | CSZ-X-398Y0-0908 |
| 42U   | 600    | 22     | 1905   | 18,16     | CSZ-X-426Y0-0908 |
| 42U   | 800    | 22     | 1905   | 22,83     | CSZ-X-428Y0-0908 |
| 47U   | 600    | 22     | 2127   | 20,01     | CSZ-X-476Y0-0908 |
| 47U   | 800    | 22     | 2127   | 25,16     | CSZ-X-478Y0-0908 |

X : Color code = 7: RAL 7035 (Grey); 9: RAL 9005 (Black)

# inorax-ST Cabinets

## High Perforation Rated Flat Door



**Material** 1.2 mm Steel **Color** RAL 7035 (Light Grey) and RAL 9005 (Black)  
**Finish** Electrostatic Powder Paint **Perforation Rate** 67%

| H (U) | W (mm) | D (mm) | H (mm) | Weight kg | Part No          |
|-------|--------|--------|--------|-----------|------------------|
| 26U   | 600    | 22     | 1194   | 7,51      | CSZ-X-266Y0-0909 |
| 36U   | 600    | 22     | 1638   | 9,85      | CSZ-X-366Y0-0909 |
| 39U   | 800    | 22     | 1772   | 13,72     | CSZ-X-398Y0-0909 |
| 42U   | 600    | 22     | 1905   | 11,50     | CSZ-X-426Y0-0909 |
| 42U   | 800    | 22     | 1905   | 14,87     | CSZ-X-428Y0-0909 |
| 47U   | 600    | 22     | 2127   | 12,67     | CSZ-X-476Y0-0909 |
| 47U   | 800    | 22     | 2127   | 16,39     | CSZ-X-478Y0-0909 |

X : Color code = 7: RAL 7035 (Grey); 9: RAL 9005 (Black)

## High Perforation Rated Double Door



**Material** 1.2 mm Steel **Color** RAL 7035 (Light Grey) and RAL 9005 (Black)  
**Finish** Electrostatic Powder Paint **Perforation Rate** 67%

| H (U) | W (mm) | D (mm) | H (mm) | Weight kg | Part No          |
|-------|--------|--------|--------|-----------|------------------|
| 26U   | 600    | 22     | 1194   | 11,69     | CSZ-X-266Y0-0911 |
| 36U   | 600    | 22     | 1638   | 15,40     | CSZ-X-366Y0-0911 |
| 39U   | 800    | 22     | 1772   | 20,89     | CSZ-X-398Y0-0911 |
| 42U   | 600    | 22     | 1905   | 17,86     | CSZ-X-426Y0-0911 |
| 42U   | 800    | 22     | 1905   | 22,53     | CSZ-X-428Y0-0911 |
| 47U   | 600    | 22     | 2127   | 19,71     | CSZ-X-476Y0-0911 |
| 47U   | 800    | 22     | 2127   | 24,86     | CSZ-X-478Y0-0911 |

X : Color code = 7: RAL 7035 (Grey); 9: RAL 9005 (Black)

## Rear Metal Panel with Cable Entry



**Material** 1,5 mm Steel **Finish** Electrostatic Powder Paint  
**Color** RAL 7035 (Light Grey) and RAL 9005 (Black)

| H (U) | W (mm) | D (mm) | H (mm) | Weight kg | Part No          |
|-------|--------|--------|--------|-----------|------------------|
| 3U    | 600    | 23     | 133    | 0,97      | CSZ-X-036Y0-0915 |
| 3U    | 800    | 23     | 133    | 1,35      | CSZ-X-038Y0-0915 |
| 4U    | 600    | 23     | 178    | 1,24      | CSZ-X-046Y0-0915 |
| 4U    | 800    | 23     | 178    | 1,71      | CSZ-X-048Y0-0915 |
| 5U    | 600    | 23     | 222    | 1,52      | CSZ-X-056Y0-0915 |
| 5U    | 800    | 23     | 222    | 2,06      | CSZ-X-058Y0-0915 |
| 6U    | 600    | 23     | 267    | 1,79      | CSZ-X-066Y0-0915 |
| 6U    | 800    | 23     | 267    | 2,42      | CSZ-X-068Y0-0915 |

X : Color code = 7: RAL 7035 (Grey); 9: RAL 9005 (Black)

## Adjustable Cable Entry Panel with EPDM Gasket



**Material** 1,2 mm Steel **Finish** Electrostatic Powder Paint  
**Color** RAL 7035 (Light Grey) and RAL 9005 (Black)

| W (mm) | D (mm) | H (mm) | Weight kg | Part No          |
|--------|--------|--------|-----------|------------------|
| 350    | 152    | 20     | 0,53      | CSZ-X-YYYY0-0803 |

X : Color code = 7: RAL 7035 (Grey); 9: RAL 9005 (Black)



www.facebook.com/canovategroup



www.linkedin.com/company/canovate-group



canovatesales



www.facebook.com/canovategroup



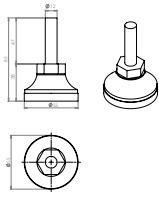
www.linkedin.com/company/canovate-group



canovatesales

# inorax-ST Cabinets

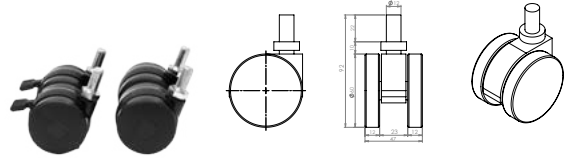
## Adjustable Feet



**Material** Steel and Plastic ABS **Finish** Zinc Plated  
**Packaging** 4 pcs in a box

| Maximum Static Load | Set Weight kg | Part No    |
|---------------------|---------------|------------|
| 600 kg / piece      | 0.35          | CCA-0-7014 |

## Castor Set



**Material** Steel and Plastic ABS **Finish** Zinc Plated  
**Packaging** 2 pcs with stopper and 2 pcs without Stopper in a box

| Maximum Static Load | Set Weight kg | Part No    |
|---------------------|---------------|------------|
| 250 kg / piece      | 0.77          | CCA-0-7015 |

## Multi Point Lock for Double Doors

**Material** Steel  
**Packaging** 1 pc in a box  
**Part No** CSZ-0-YYYY0-1005



## Single Point Lock



**Material** Steel  
**Packaging** 1 pc in a box  
**Part No** CSZ-0-YYYY0-1003

## Multi Point Lock for Single Perforated Door

**Material** Steel  
**Packaging** 1 pc in a box  
**Part No** CSZ-0-YYYY0-1004

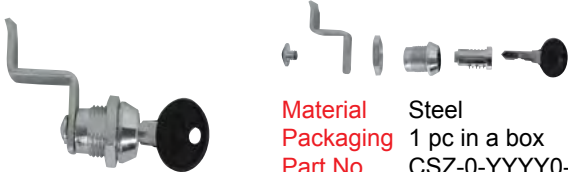


## Cylindrical Lock for Side Panel



**Material** Steel  
**Packaging** 1 pc in a box  
**Part No** CSZ-0-YYYY0-1001

## Cylindrical Lock for Rear Metal Solid Panel



**Material** Steel  
**Packaging** 1 pc in a box  
**Part No** CSZ-0-YYYY0-1002

