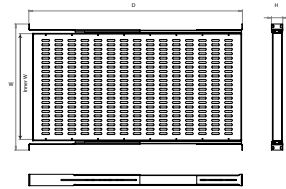
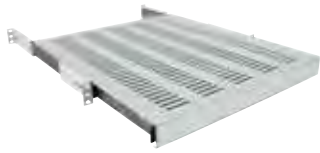


19" Sliding Shelf



Material 1.5 mm Steel **Maximum Static Load** 35 kg
Finish Electrostatic Powder Paint **Packaging** One piece in a box

H (U)	D (mm)	W (mm)	Inner W (mm)	Weight kg	Part No
1U	400	483	435	2,37	CCA-X-1012
1U	600	483	435	3,56	CCA-X-1013
1U	800	483	435	4,74	CCA-X-1014
1U	1000	483	435	5,93	CCA-X-1015