

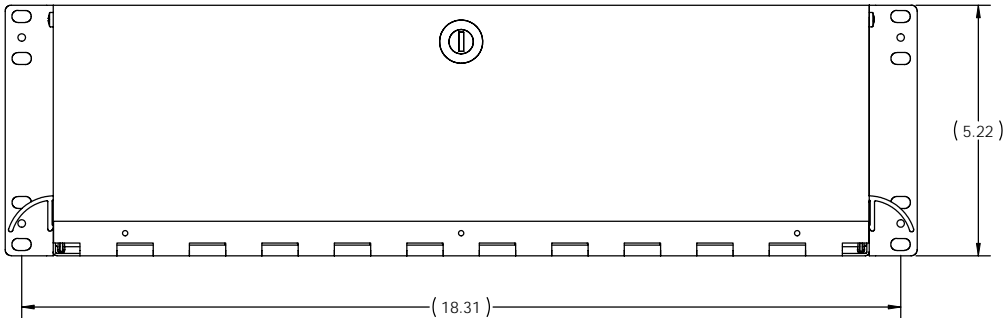
- NOTES:
1. DIMENSIONS ARE INCHES.
  2. THE FIBER CABINET PART NUMBER CONSISTS OF A BASE PART NUMBER AND ADDITIONAL IDENTIFIERS AS SEEN IN THE TABLES 1 THRU 4, BELOW.
  3. THE STANDARD PANEL ORIENTATION IS HORIZONTAL.
  4. THE STANDARD CABINET CLOSURE IS FRONT LOCK, REAR SWELL LATCH.
  5. THE STANDARD CABINET COLOR IS BLACK.
  6. THE CABINET ASSEMBLY INCLUDES HOOK/LOOP TIE WRAPS, MOUNTING BRACKETS, AND ACCESSORY KIT AS UNINSTALLED ITEMS PACKED INSIDE FOR SHIPPING.

TABLE 1	
"W"	CABINET STYLE
C	PATCH/SPLICE
P	PATCH
S	SPLICE
T	iTRACS

TABLE 2	
"X"	ORIENTATION
NONE	HORIZONTAL
H	HORIZONTAL
N	NO DWRFACE REOD

TABLE 3	
"Y"	FRONT/REAR CLOSURE
NONE	LOCK/SWELL LATCH
A	LOCK/SWELL LATCH
B	LOCK/LOCK
C	THUMB LATCH/SWELL LATCH
D	THUMB LATCH/LOCK

TABLE 4	
"Z"	COLOR
NONE	BLACK
-00	BLACK



CABINET FRONT VIEW  
1:2 SCALE

FC03U-WXY-Z


BASE NUMBER

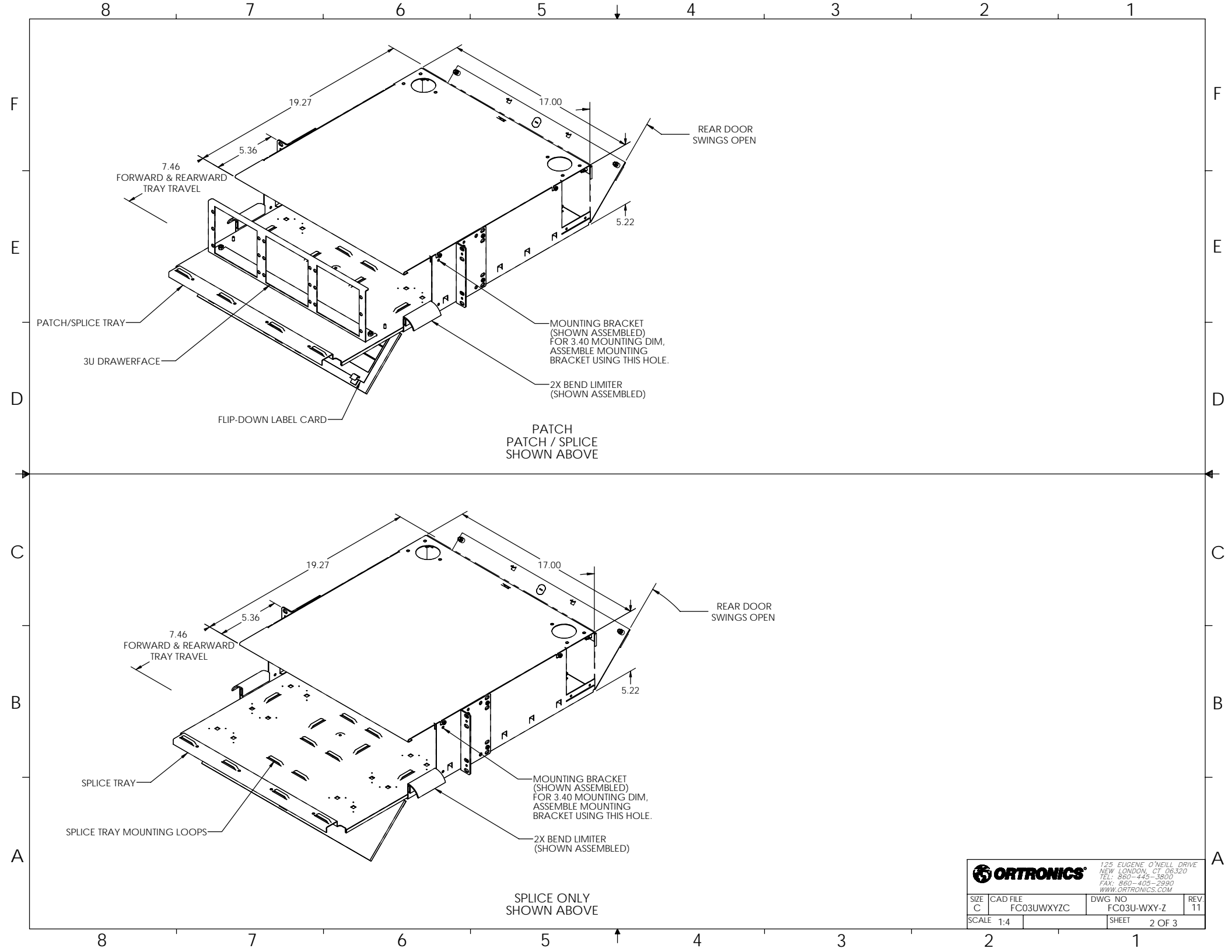
CABINET STYLE IDENTIFIER

FRONT/REAR CLOSURE IDENTIFIER

PANEL/CASSETTE ORIENTATION IDENTIFIER

PART NUMBER LEGEND

*** NOTICE *** THIS DOCUMENT CONTAINS CONFIDENTIAL AND/OR PROPRIETARY INFORMATION INTENDED FOR USE ONLY BY THE INDIVIDUALS PROVIDED. NEITHER THIS DOCUMENT, NOR ANY INFORMATION CONTAINED HEREIN, MAY BE COPIED, DISTRIBUTED, UNLESS TO ANY THIRD PARTY OR USED IN ANY MANNER OTHER THAN FOR WHICH IT HAS BEEN PROVIDED. WITHOUT THE PRIOR WRITTEN CONSENT OF ORTRONICS INC., MANUFACTURING RELEASE. PRODUCT SPECIFICATIONS AND STANDARDS ARE SUBJECT TO CHANGE WITHOUT NOTICE.			 125 EUGENE O'NEILL DRIVE NEW LONDON, CT 06320 TEL: 860-445-3800 FAX: 860-405-2990 WWW.ORTRONICS.COM		
TITLE CABINET ASSEMBLY, FIBER, 3U ENHANCED			DWG NO FC03U-WXY-Z		
NAME RYNASKI			DATE 05/04/05		
SIZE C			CAD FILE FC03UWXYZC		
DWN CHK APPR			SCALE 1:4		
SHEET 1 OF 3			REV 11		



7.46  
FORWARD & REARWARD  
TRAY TRAVEL

PATCH/SPLICE TRAY

3U DRAWERFACE

FLIP-DOWN LABEL CARD

PATCH  
PATCH / SPLICE  
SHOWN ABOVE

MOUNTING BRACKET  
(SHOWN ASSEMBLED)  
FOR 3.40 MOUNTING DIM,  
ASSEMBLE MOUNTING  
BRACKET USING THIS HOLE.

2X BEND LIMITER  
(SHOWN ASSEMBLED)

REAR DOOR  
SWINGS OPEN

7.46  
FORWARD & REARWARD  
TRAY TRAVEL

SPLICE TRAY


SPLICE TRAY MOUNTING LOOPS

SPLICE ONLY  
SHOWN ABOVE

MOUNTING BRACKET  
(SHOWN ASSEMBLED)  
FOR 3.40 MOUNTING DIM,  
ASSEMBLE MOUNTING  
BRACKET USING THIS HOLE.

2X BEND LIMITER  
(SHOWN ASSEMBLED)

REAR DOOR  
SWINGS OPEN

		125 EUGENE O'NEILL DRIVE NEW LONDON, CT 06320 TEL: 860-445-3800 FAX: 860-405-2990 WWW.ORTRONICS.COM	
SIZE C	CAD FILE FC03UWXYZC	DWG NO FC03U-WXY-Z	REV 11
SCALE 1:4	SHEET 2 OF 3		

