

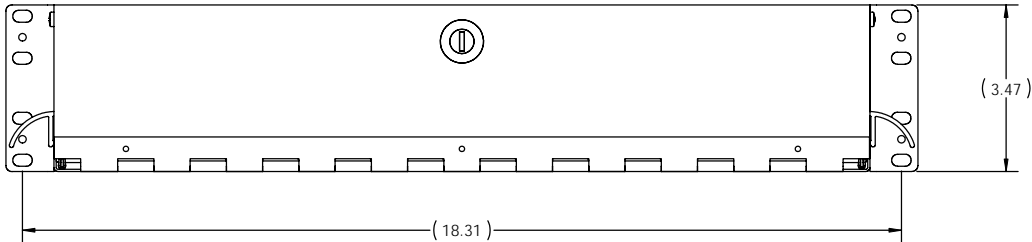
- NOTES:
1. DIMENSIONS ARE INCHES.
  2. THE FIBER CABINET PART NUMBER CONSISTS OF A BASE PART NUMBER AND ADDITIONAL IDENTIFIERS AS SEEN IN THE TABLES 1 THRU 4, BELOW.
  3. THE STANDARD PANEL ORIENTATION IS HORIZONTAL.
  4. THE STANDARD CABINET CLOSURE IS FRONT LOCK, REAR SWELL LATCH.
  5. THE STANDARD CABINET COLOR IS BLACK.
  6. THE CABINET ASSEMBLY INCLUDES HOOK/LOOP TIE WRAPS, MOUNTING BRACKETS, AND ACCESSORY KIT AS UNINSTALLED ITEMS PACKED INSIDE FOR SHIPPING.

TABLE 1	
"W"	CABINET STYLE
C	PATCH/SPLICE
P	PATCH
S	SPLICE
T	ITRACS

TABLE 2	
"X"	ORIENTATION
NONE	HORIZONTAL
H	HORIZONTAL
N	NO DWRFACE REQD

TABLE 3	
"Y"	FRONT/REAR CLOSURE
NONE	LOCK/SWELL LATCH
A	LOCK/SWELL LATCH
B	LOCK/LOCK
C	THUMB LATCH/SWELL LATCH
D	THUMB LATCH/LOCK

TABLE 4	
"Z"	COLOR
NONE	BLACK
-00	BLACK



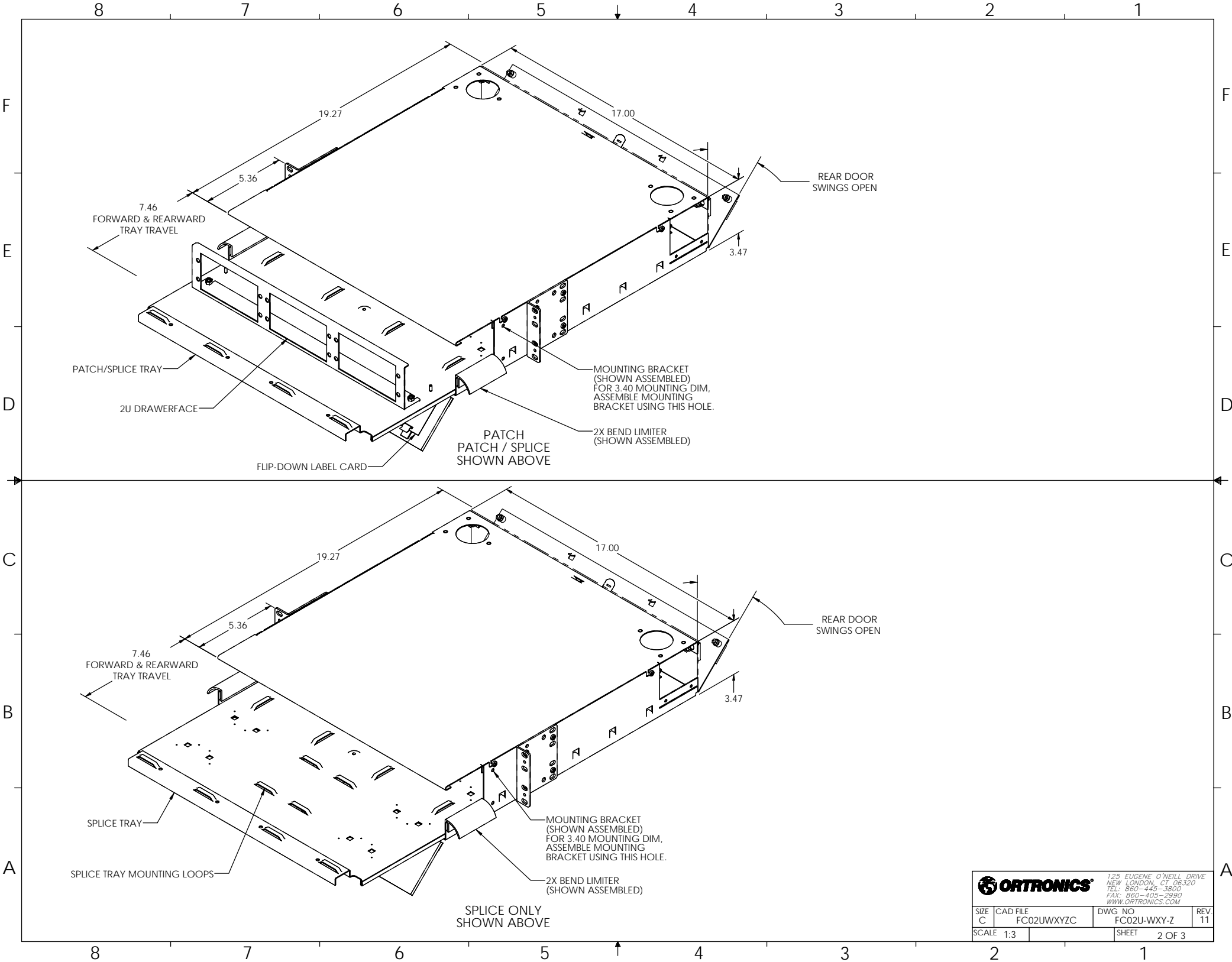
CABINET FRONT VIEW  
1:2 SCALE

FC02U-WXY-Z

BASE NUMBER  
CABINET STYLE IDENTIFIER  
CABINET COLOR  
FRONT/REAR CLOSURE IDENTIFIER  
PANEL/CASSETTE ORIENTATION IDENTIFIER

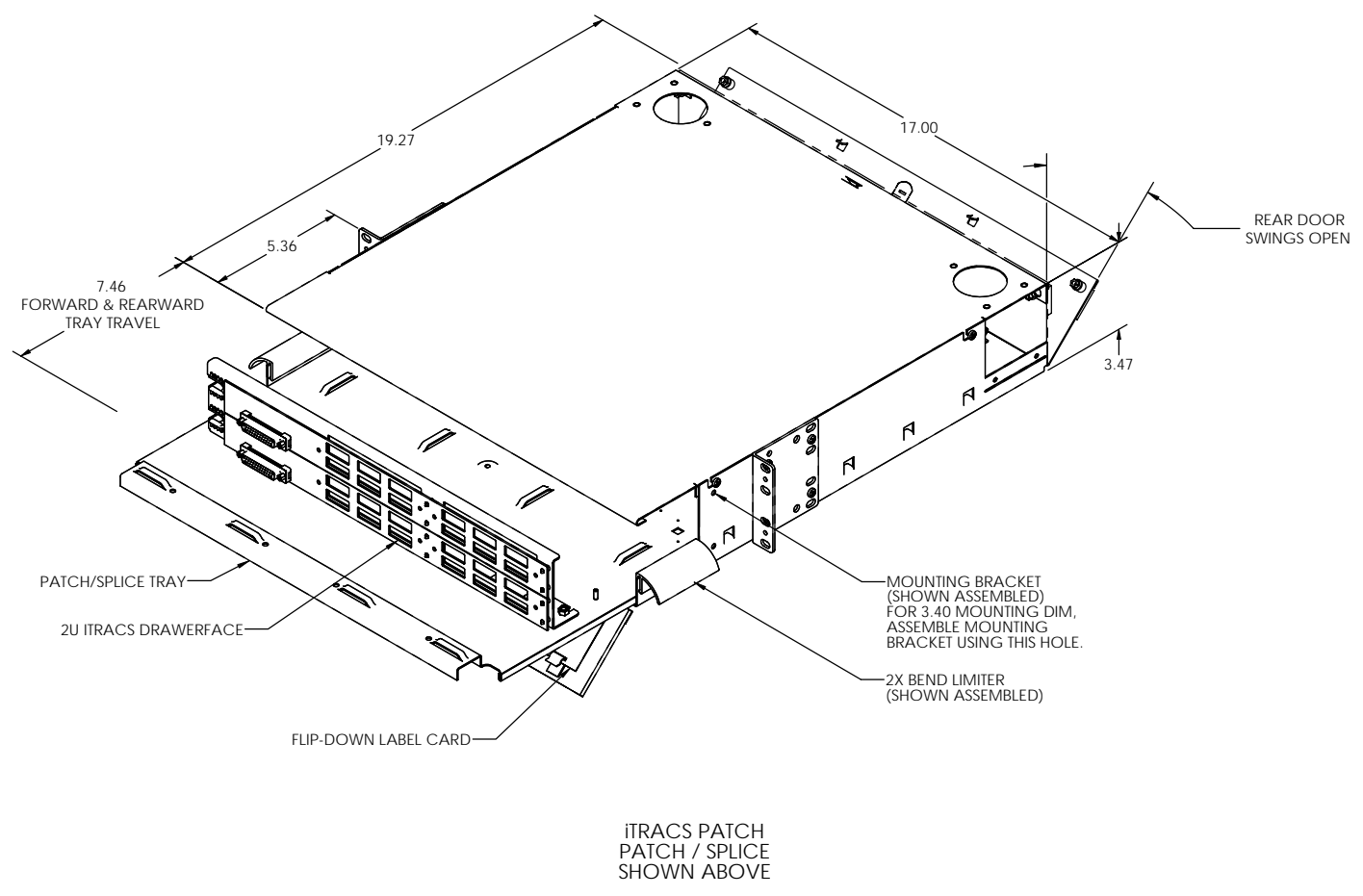
PART NUMBER LEGEND


*** NOTICE *** THIS DOCUMENT CONTAINS CONFIDENTIAL AND/OR PROPRIETARY INFORMATION INTENDED FOR USE ONLY BY THE INDIVIDUALS PROVIDED. NEITHER THIS DOCUMENT, NOR ANY INFORMATION CONTAINED HEREIN, MAY BE COPIED, DISTRIBUTED, UNCLASSIFIED TO ANY THIRD PARTY OR USED IN ANY MANNER OTHER THAN FOR WHICH IT HAS BEEN PROVIDED, WITHOUT THE PRIOR WRITTEN CONSENT OF ORTRONICS, INC. MANUFACTURING RELEASE. PRODUCT SPECIFICATIONS AND STANDARDS ARE SUBJECT TO CHANGE WITHOUT NOTICE.			125 EUGENE O'NEILL DRIVE NEW LONDON, CT 06320 TEL: 860-445-3800 FAX: 860-405-2990 WWW.ORTRONICS.COM		
TITLE CABINET ASSEMBLY, FIBER, 2U ENHANCED			SIZE C	CAD FILE FC02UWXYZC	DWG NO FC02U-WXY-Z
DWN CHK APPR	NAME RYNASKI AM MEM	DATE 05/04/05 05/13/05 05/13/05	SCALE 1:3	SHEET 1 OF 3	



8 7 6 5 4 3 2 1

F  
E  
D  
C  
B  
A



		125 EUGENE O'NEILL DRIVE NEW LONDON, CT 06320 TEL: 860-445-3800 FAX: 860-405-2990 WWW.ORTRONICS.COM	
SIZE C	CAD FILE FC02UWXYZC	DWG NO FC02U-WXY-Z	REV 11
SCALE 1:3	SHEET 3 OF 3		

8 7 6 5 4 3 2 1