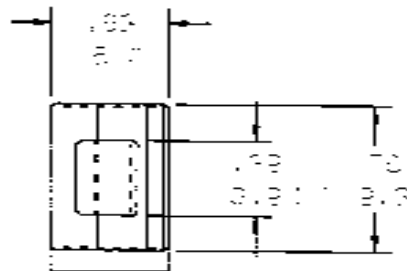


THIS COPY IS PROVIDED ON A RESTRICTED BASIS AND IS NOT TO BE USED IN ANY WAY DETRIMENTAL TO THE INTERESTS OF PANDUIT CORP.

NO WARRANTY, EXPRESSED OR IMPLIED, IS MADE BY PANDUIT WITH RESPECT TO ADHESIVE BOND PERFORMANCE. AMONG OTHER THINGS, THE CONDITIONS UNDER WHICH THESE MOUNTS MAY BE APPLIED, AND/OR THE SURFACE TO WHICH THEY MAY BE APPLIED, ARE BEYOND PANDUIT'S CONTROL.



PANDUIT PART NUMBER*	MAXIMUM CABLE DIA. in. (mm)	WEIGHT lbs. (g)/100pcs
ACC19-A	.19 (4.81)	.17 (77)
ACC19-A*	.19 (4.81)	.17 (77)
ACC19-AV	.19 (4.81)	.17 (77)

- TO APPLY ADHESIVE CORD CLIP:
1. REMOVE PROTECTIVE LINER
 2. PLACE IN DESIRED LOCATION
 3. APPLY PRESSURE TO TOP OF CORD CLIP

- ADHESIVE BACKING: PRESSURE SENSITIVE FOAM TAPE, (.041±.0) THICK, WITH RUBBER (I-AT) ACRYLIC (I-AT) OR HIGH BOND ACRYLIC (I-AV) ADHESIVE AND PROTECTIVE LINER. LINER TO EXTEND BEYOND EDGE TO FORM TEAR-TAB. MOUNT IS DESIGNED TO SUPPORT .20 lbs. (91g) MAX. WEIGHT ON A CLEAN, DRY, SMOOTH SURFACE.

NOTES:

- * 11 SEE CURRENT PRICE SHEET FOR PART NUMBER SUFFIX DESIGNATION FOR PACKAGE SIZE AND PART COLOR.

DIMENSIONS IN PARENTHESES ARE METRIC!

DO NOT SCALE DIMENSIONS 303597BC_DC_380239GG/006



CORP. TINLEY PARK, ILLINOIS

ADHESIVE CORD CLIP
ACC19-A, ACC19-AT, ACC19-AV

UNLESS OTHERWISE SPECIFIED,
DIMENSIONAL TOLERANCES ARE:
1.XX1 ± N/A 1.XXX1 ± N/A
1.XXX1 ± .02 1.51 ANGLES ± 5°

UNLESS OTHERWISE SPECIFIED,
ALL DIMENSIONS ARE GIVEN
IN INCHES, THIRD ANGLE PROJECTION.

DRAWN BY CGSM

SCALE FULL

DATE 2-23-99

NYLON 6/6

DRAWING NO.

380239GG

200

A

5/78

REV	DATE	BY	CHK	DESCRIPTION	ECN	A	CUST	SUP
1	7-15-99	CGSM		REPLATED FROM 004	650239GG	1		
R	2-23-99	CGSM		REPLATED FROM 004 TO 006	680239GG	R		