

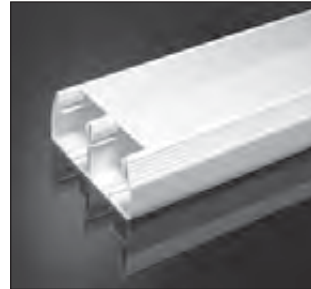
Pan-Way® Twin-70 Surface Raceway System

PANDUIT®

SPECIFICATION SHEET

specifications

Twin-70 non-metallic, multi-channel surface raceway shall be used to route, protect and conceal data, voice, fiber optic and power cabling. The raceway shall be listed as suitable for use in applications up to 600 volts between conductors by Underwriters Laboratories, Inc. per standard 5A, and by Canadian Standards Association, Inc. per 22.2 no. 62.1-03, when screw secured and installed per instructions. A full complement of fittings with a 1" minimum bend radius compliant with TIA/EIA-568-B, must be available as well as device brackets and internal junction boxes to install a variety of communication and electrical devices. The raceway shall provide two separate covers to maintain total separation of power and low voltage cabling. Panduit "snap-on" faceplates for data and power terminations shall be available. Twin-70 raceway must be tamper resistant yet also allow access for moves, adds and changes. Twin-70 shall be manufactured from impact-resistant material with flammability rating of V-0. Twin-70 raceway finish shall be pure of color and will resist scratches and dents, and will not peel or corrode. Twin-70 raceway shall be available in three standard colors and shall be optimized for use with the Panduit® Pan-Net® Communication System.



technical information

Material:	Rigid PVC
Flammability:	UL94V-0
Voltage rating:	UL-5A 600VAC; CSA C22.2 No. 62.1-03 600V
Approvals:	UL Listed 95425 (raceway); UL Listed E116129 (fittings)
NEC:	Article 388
Color:	Off White (IW), Electrical Ivory (EI), White (WH)
CSI spec form:	LP-CSISPEC-Twin-70-1

key features and benefits

Separate covers throughout the system	Maintains complete separation of power and data cabling systems and provides maximum safety during installation for moves, adds and changes
1" bend radius control fittings	Cables in the raceway will satisfy the minimum 1" bend radius requirement, preventing the potential degradation of cable performance; meets TIA/EIA standard and many warranty requirements
Snap-on faceplates	Faceplates snap directly onto the raceway base; cabling can be quickly accessed by removing only the faceplate, which requires less labor and lowers the cost of maintenance
Each channel has a 70mm opening	Accepts any NEMA standard power or communication faceplates
Highly tamper resistant	Very difficult for untrained personnel to enter the raceway or remove faceplates which provides maximum security for communication cabling and maximum safety for power cabling
Non-metallic	Lightweight, reducing installer fatigue; solid color throughout profile will not chip, peel, rust, corrode or scratch; easy to cut, reducing the need for special cutting devices; high impact resistance; durable
Designer profile	Aesthetically pleasing and matches a wide variety of decors
Available in three standard colors	Matches a variety of colors for various applications

applications

Pan-Way® Twin-70 Surface Raceway is a multi-channel channel raceway which provides solutions for routing low voltage, fiber optic and/or power cabling along perimeter walls. Twin-70 Raceway offers two totally independent channels which are maintained throughout

the system for independent access to power, low voltage and fiber optic cabling. Twin-70 Raceway can mount NEMA standard 70mm screw-on faceplates or superior Pan-Way® Snap-on Faceplates directly to the independent channels.

www.panduit.com

Pan-Way® Twin-70 Raceway

Raceway Bases

8 feet:	T702BIW8
10 feet:	T702BIW10

Raceway Covers

8 feet:	T70CIW8
10 feet:	T70CIW10

Divider Walls

8 feet:	T70CIW8
10 feet:	T70CIW10

Twin-70 Raceway Fittings

Base coupling

fitting:	T702BCIW-X
-----------------	------------

Cover coupler

fitting:	T70CCIW-X
-----------------	-----------

Outside corner

fitting:	T702OCIW
-----------------	----------

Inside corner

fitting:	T702ICIW
-----------------	----------

Right angle

fitting:	T702RAIW
-----------------	----------

End cap fitting:

fitting:	T702ECIW
-----------------	----------

Entrance end

fitting:	T702EEIW
-----------------	----------

Tee fitting:

fitting:	T702TIW
-----------------	---------

Transition fitting:

fitting:	T702TRIW
-----------------	----------

Transition divided

insert fitting:	T702TRI
------------------------	---------

Twin-70 Accessories

Wire retainer:

fitting:	T70WR-X
-----------------	---------

Device bracket:

fitting:	T70DB-X
-----------------	---------

Standard faceplate

bracket:	T70SDB-X
-----------------	----------

Three sided

hanging box:	T70HB3-X
---------------------	----------

GFCI three sided

hanging box:	T70HB3GFCI-X
---------------------	--------------

For standard colors other than IW (Off White), replace IW in part number with EI (Electrical Ivory) or WH (White).

Pan-Way® Twin-70 Surface Raceway System

Wire Fill

Raceway Type and Configuration	Fill Area (in ²)	Electrical Cables			Data Grade Cables								Coax Cables				Fiber Optic Cable	
		14 AWG	12 AWG	10 AWG	24 AWG		24 AWG		24 AWG		24 AWG							
		THHN/THWN/T90			Cat. 5e – Plenum		Cat. 5e – Plenum		Cat. 6 and Cat. 6A (SD)		Cat. 6A		RG6		RG59/u		2 Strand	
		0.111	0.130	0.164	DIA = 0.193		DIA = 0.225		DIA = 0.240		DIA = 0.300		DIA = 0.275		DIA = 0.242		DIA = 0.175	
		Fill			Fill		Fill		Fill		Fill		Fill		Fill		Fill	
		MAX	MAX	MAX	SPEC	MAX	SPEC	MAX	SPEC	MAX	SPEC	MAX	SPEC	MAX	SPEC	MAX	SPEC	MAX
(UL Temp Rise Test)			(40%)	(60%)	(40%)	(60%)	(40%)	(60%)	(40%)	(60%)	(40%)	(60%)	(40%)	(60%)	(40%)	(60%)	(40%)	(60%)
Twin-70: Power and data (no terminations)	2.05	—	—	—	28	42	20	30	18	27	11	17	13	20	17	26	34	51
	1.43	16	16	15	—	—	—	—	—	—	—	—	—	—	—	—	—	—
Twin-70: One channel (no devices)	4.59	—	—	—	62	94	46	69	40	60	25	38	30	46	39	59	76	114
Twin-70: Data only (Screw-On Faceplate)	3.11	—	—	—	42	63	31	46	27	41	17	26	20	31	27	40	51	77
Twin-70: Power only (Screw-On Faceplate)	3.32	15	13	13	—	—	—	—	—	—	—	—	—	—	—	—	—	—
Twin-70: Data only (Snap-On Faceplate)	4.14	—	—	—	56	84	41	62	36	54	23	35	27	41	36	54	68	103
Twin-70: TVSS Power (Snap-On Faceplate)	2.33	16	16	14	—	—	—	—	—	—	—	—	—	—	—	—	—	—

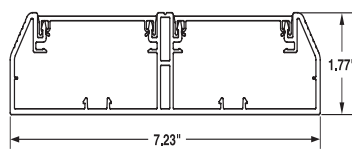
Twin-70 Raceway



T702B



T70C



TWIN-70
Left Internal Area = 4.59 Sq. In.
Right Internal Area = 4.59 Sq. In.

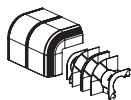
Fittings and Accessories



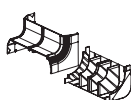
T702BC-X



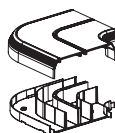
T70CC-X



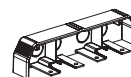
T702OC



T702IC



T702RA



T702EC



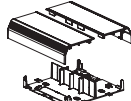
T702EE



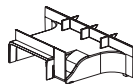
T702T



T702TR



T702TRL



T702TRI



T70DW



T70WR-X



T70DB-X



T70HB3-X



T70SDB-X



T70HB3GFCI-X

WORLDWIDE SUBSIDIARIES AND SALES OFFICES

PANDUIT CANADA
Markham, Ontario
cs-cdn@panduit.com
Phone: 800.777.3300

PANDUIT EUROPE LTD.
London, UK
cs-emea@panduit.com
Phone: 44.20.8601.7200

PANDUIT SINGAPORE PTE. LTD.
Republic of Singapore
cs-ap@panduit.com
Phone: 65.6305.7575

PANDUIT JAPAN
Tokyo, Japan
cs-japan@panduit.com
Phone: 81.3.6863.6000

PANDUIT LATIN AMERICA
Guadalajara, Mexico
cs-la@panduit.com
Phone: 52.33.3777.6000

PANDUIT AUSTRALIA PTY. LTD.
Victoria, Australia
cs-aus@panduit.com
Phone: 61.3.9794.9020

For a copy of Panduit product warranties, log on to www.panduit.com/warranty

For more information

Visit us at www.panduit.com

Contact Customer Service by email: cs@panduit.com
or by phone: 800.777.3300



©2014 Panduit Corp.
ALL RIGHTS RESERVED.
SRSP28--WW-ENG
Replaces WW-SRSP09
1/2014