

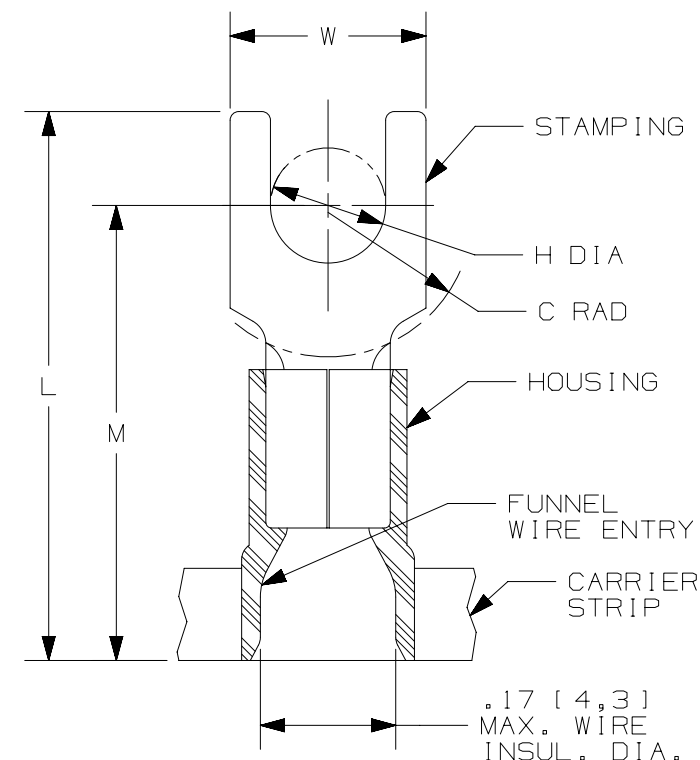
THIS COPY IS PROVIDED ON A RESTRICTED BASIS AND IS NOT TO BE USED IN ANY WAY DETRIMENTAL TO THE INTERESTS OF PANDUIT CORP.

PANDUIT PART #	STUD SIZE		DIMENSIONS in. [mm]				
	ENGLISH	METRIC	L ± .03 [0,76]	W ± .01 [0,25]	C ± .02 [0,51]	M ± .03 [0,76]	H ± .01 [0,25]
PMV2-3FB	--	M3	.78 [19,8]	.23 [5,9]	.20 [5,1]	.64 [16,3]	.13 [3,3]
PV14-6FB	#6	M3, 5	.78 [19,8]	.28 [7,1]	.19 [4,8]	.64 [16,3]	.15 [3,8]
PV14-6FNB*	#6	M3, 5	.78 [19,8]	.24 [6,2]	.19 [4,8]	.64 [16,3]	.15 [3,8]
PV14-8FB	#8	M4	.84 [21,3]	.31 [7,9]	.23 [5,9]	.68 [17,3]	.17 [4,3]
PV14-10FB	#10	--	.86 [21,8]	.34 [8,6]	.24 [6,2]	.70 [17,8]	.20 [5,0]
PV14-10FNB*	#10	--	.86 [21,8]	.31 [7,9]	.24 [6,2]	.70 [17,8]	.20 [5,0]
PMV2-5FB	--	M5	.86 [21,8]	.34 [8,6]	.25 [6,4]	.70 [17,8]	.21 [5,3]
PV14-14FB	1/4"	M6	1.03 [26,2]	.44 [11,2]	.32 [8,1]	.78 [19,8]	.27 [6,9]

\* ONLY CSA CERTIFIED

#### NOTES:

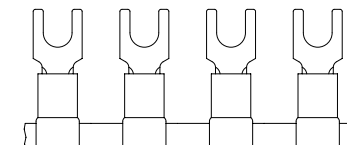
- USED FOR:
  - #16-14 AWG [1,5-2,5 mm<sup>2</sup>] SOLID OR STRANDED COPPER WIRE
  - 221°F [105°C] MAX. OPERATING TEMPERATURE
  - 600 V. MAX. VOLTAGE RATING
- INSTALLATION TOOLS:
  - PRESSES: CP-871
  - APPLICATOR: CD-800EZ, CA9
  - DIE INSERTS: CD-800-2, CD9-2A
- WIRE STRIP LENGTH: 11/32 <sup>+1/32</sup><sub>-0</sub> [8,7 <sup>+0,8</sup><sub>-0</sub>]
- MATERIAL:
  - STAMPING: .03" [0,76] THK COPPER, TIN PLATED
  - HOUSING: VINYL, BLUE
- SEE [www.panduit.com](http://www.panduit.com) FOR PACKAGE QUANTITIES INDICATED BY PART NUMBER SUFFIX
- DIMENSIONS IN BRACKETS ARE METRIC EQUIVALENT

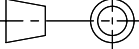


LISTED  
587H  
E52164



CERTIFIED  
LR31212



										TITLE FORK TERMINALS, 2 PC. VINYL INSULATED, #16-14 CUSTOMER DRAWING			
										ITEM REVISION NAME N41080BA/05		<div>PANDUIT</div>	
										DATASET FILE NAME N41080BA_DC/05A			
										UNLESS OTHERWISE SPECIFIED, DIMENSIONAL TOLERANCES ARE: IN [ mm ] .x ± .1 [ 2.54 ]      .xxx ± .005 [ .13 ] .xx ± .01 [ .25 ]      ANGLES ± 5 ° <div>THIRD ANGLE PROJECTION</div>			
										MATERIAL:  SEE NOTES			
											DRAWING NUMBER: A41080		
05	09.07.12	JBN	LCA	VMB	ADDED METRIC EQUIVALENT. REVISED NOTES. UPDATED DRAWING TO CURRENT STANDARDS.	A41080							
REV	DATE	BY	CHK	APR	DESCRIPTION	ECN	DRAWN BY	DATE	CHK	SCALE	SHT 1 OF 1	SIZE	
							DSM	-	RAKL	N.T.S.		A	