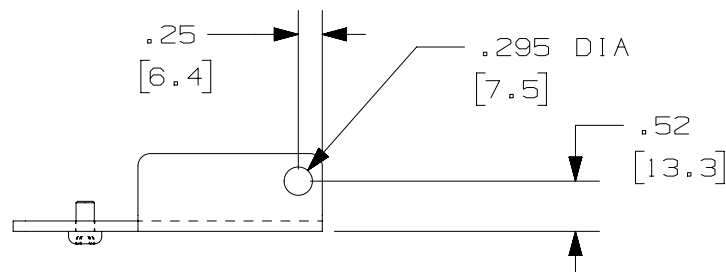
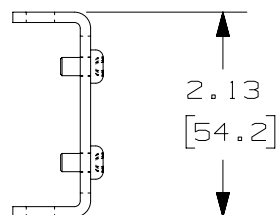
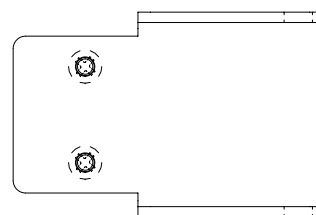
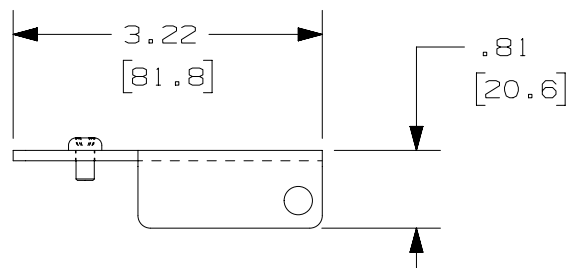


2

1

THIS COPY IS PROVIDED ON A RESTRICTED BASIS AND IS NOT TO BE USED IN ANY WAY DETRIMENTAL TO THE INTERESTS OF PANDUIT CORP.

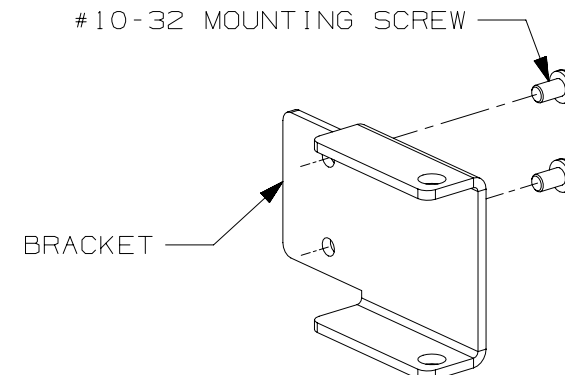


PANDUIT P/N	WEIGHT
NFEDB23	.27 LBS/EACH 122.5 g/EACH

NOTES:

- VISIT OUR ON-LINE CATALOG AT WWW.PANDUIT.COM FOR A CURRENT LIST OF PRODUCTS APPLICABLE FOR USE WITH THIS PART.
- DIMENSIONS IN PARENTHESIS ARE METRIC (mm).
- EXTENDER DOOR BRACKET IS USED WHEN THE NFR84 IS SETUP FOR 23" MOUNTING.
- COMPONENTS:
 - BRACKET
 - #10-32 X 5/16" SCREWS

#10-32 MOUNTING SCREW



BRACKET

00B	6-23-14	BAME	FGR	TGO	UPDATED TITLE BLOCK	10099-43
R	5-21-03	JDWE			RELEASED TO PRODUCTION	10099-43
REV	DATE	BY	CHK	APR	DESCRIPTION	ECN

TITLE		23" NETFRAME EXTENDER DOOR BRACKET (NFEDB23)	
ITEM REVISION NAME		CONTROL DRAWING	
DATASET FILE NAME		V10099EF/00	
UNLESS OTHERWISE SPECIFIED, DIMENSIONAL TOLERANCES ARE: IN (mm)		MATERIAL:	
.X ± .XX ±		STEEL- POWDER COATED BLACK	
.XXX ± ANGLES ±		DRAWING NUMBER:	
THIRD ANGLE PROJECTION		10099-43	
DRAWN BY	DATE	CHK	SCALE
JDWE	5-21-03		NONE
SHT 1 OF 1		SIZE	
		A	

2

1