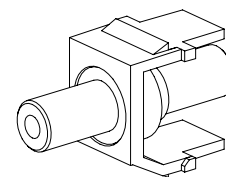
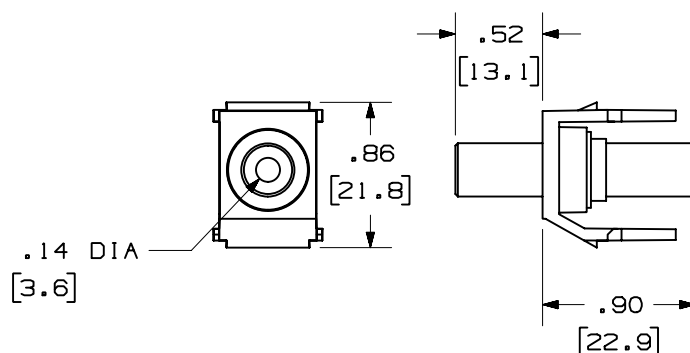
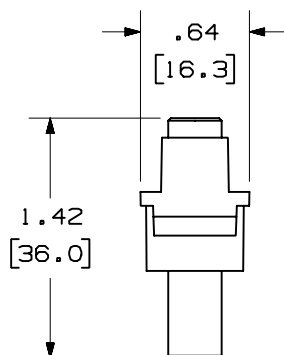




THIS COPY IS PROVIDED ON A RESTRICTED BASIS AND IS NOT TO BE USED IN ANY WAY DETRIMENTAL TO THE INTERESTS OF PANDUIT CORP.



PANDUIT P/N	WEIGHT
NK35MSC**	.23 LB/10 PCS (105.1g/10 PCS)

NOTES:

1. SEE CURRENT CATALOG FOR ADDITIONAL PART NUMBER SUFFIXES TO INDICATE COLOR AND OR PACKAGE QUANTITY.
2. SEE CATALOG FOR COMPLETE LIST OF PARTS APPLICABLE FOR USE WITH THIS PART.
3. DIMENSIONS IN PARENTHESES ARE IN METRIC.
4. PART INCLUDES:
 - 1- KEYSTONE MODULE BASE
 - 1- 3.5mm (1/8") HEADPHONE JACK COUPLER (ASSEMBLED TO MODULE BASE)

MODEL FILENAME	MO2201AD_NK35MSC_00.PRT	SIZE	A
DRAWING FILENAME	MO2201AD_DC_00A.PRT		
NETKEY 3.5mm (1/8") HEADPHONE JACK COUPLER MODULE CUSTOMER DRAWING			
 PANDUIT TM CORP. TINLEY PARK, ILL 60477	1.1. NUMBER		N/A
	PRODUCT SPEC		N/A
	WORK INSTRUCTION		N/A
	SCALE		NONE
 THIRD ANGLE PROJECTION	ALL DIMENSIONS ARE GIVEN IN INCHES, UNLESS OTHERWISE SPECIFIED. DIMENSIONAL TOLERANCES ARE: (.X) ± (.XXX) ± .010(.3) (.XX) ± .031(.8) ANGLES ±		
	MATERIAL:		
	MODULE: ABS		
DRAWN BY	JsP	PART NO.	NK35MSC**
DATE	4-13-05	DRAWING NO.	02201-12
CHK'D			

REV	DATE	BY	CHK	DESCRIPTION	ECN	-	R	CUST	SUP	OTH
R	4-13-05	JsP		RELEASED TO PRODUCTION	02201-12					