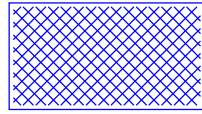


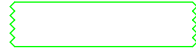
THIS COPY IS PROVIDED ON A RESTRICTED BASIS AND IS NOT TO BE USED IN ANY WAY DETRIMENTAL TO THE INTERESTS OF PANDUIT CORP.



COPPER H-TAP - HTCT250-2-1 (QTY. 1)



CLEANING PAD (QTY. 1)



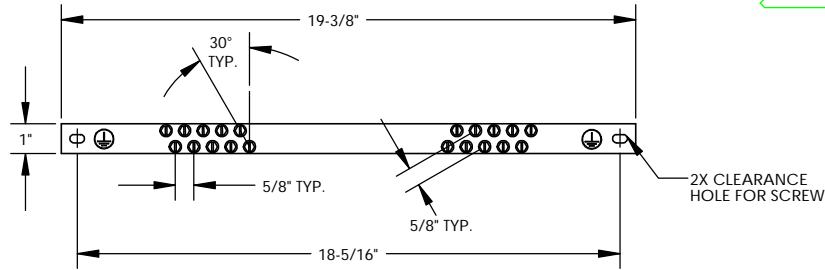
5cc TUBE ANTI-OXIDANT PASTE (QTY. 2)



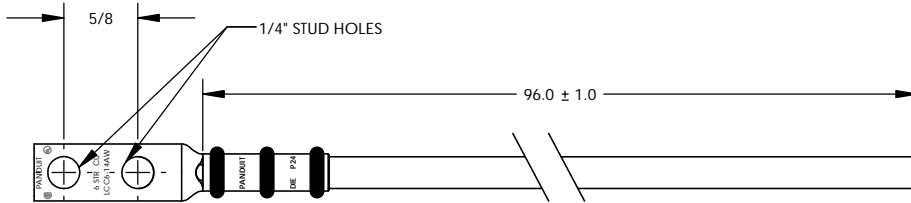
#12-24, M6, #10-32, & M5 SLOTTED HEX-HEAD ZINC PLATED THREAD-FORMING SCREW (QTY. 2 OF EACH)



#12 FLAT WASHER (QTY. 2)



UNIVERSAL GROUND BAR - RGRB19U (QTY. 1) INCLUDES:
- #12-24 HEX HEAD SCREWS (QTY. 20) PRE-ASSEMBLED



FACTORY CRIMPED #6 AWG/16mm SQ. COMMON BONDING NETWORK (CBN) JUMPER WIRE ASSEMBLY (QTY. 2) EACH ASSEMBLY INCLUDES:
LCC6-14AW (QTY. 1)
#6 AWG/16mm SQ. WIRE - GREEN/YELLOW INSULATION 96" LONG

NOTES:

1. RETROFIT COMMON BONDING NETWORK (CBN) JUMPER KIT
PART NUMBER: RGRKCBNJEJY
2. PACKAGING: 1 KIT PER BAG; 10 KITS PER BOX
3. ALL COMPONENTS THAT MAKE UP THIS KIT ARE RoHS COMPLIANT.

C41652_02

PANDUIT CORP. TINLEY PARK, ILLINOIS

RETROFIT RACK GROUNDING KIT (RGRKCBNJEJY)
CUSTOMER DRAWING

UNLESS OTHERWISE SPECIFIED
DIMENSIONAL TOLERANCES ARE:
(X) ± (XXX) ±
(XX) ± ANGLES ±

UNLESS OTHERWISE SPECIFIED,
ALL DIMENSIONS ARE GIVEN IN
INCHES, THIRD ANGLE PROJECTION

DRAWN BY JHNU
DATE 2/06

MAT'L:

SCALE NONE

DRAWING NO / CAD FILE

C41652

DWG B SIZE

REV	DATE	BY	CHK	DESCRIPTION	ECN	PM	CUST	CHK'D
02	3/06	JHNU	CSH	REMOVED CE, UL, & CSA SYMBOLS FROM DRAWING	PC00362			
01	3/06	JHNU	JHNU	REVISED DRAWING TITLE	PC00329			
00	2/06	JHNU	CSH	DRAWING RELEASED	PC00325			