

EX62XF Explosion-protected Camera

www.boschsecurity.com



BOSCH

Invented for life



- ▶ Designed and certified for effective explosion protected performance at hazardous locations
- ▶ Class I, II, III, Div. 1, 2, Groups A, B, C, D, E, F, G, T6
- ▶ Heavy duty extruded aluminum construction
- ▶ Dinion2X LTC 630 Day/Night camera
- ▶ Easy access optical slide tray

The EX62XF is an explosion-protected camera for effective surveillance in high risk environments. Utilizing Dinion2X high performance imaging, users can expect unrivaled image quality in hazardous locations. The Dinion2X Day/Night uses a 1/2-inch CCD sensor and incorporates advanced digital signal processing for outstanding picture performance. The advanced image processing enhances sensitivity; the improved XF-Dynamic engine extends the dynamic range. This unique combination provides a sharper, more detailed image with outstanding accuracy in color reproduction even under harsh lighting conditions.

Features include:

- Advanced Image Processing Technology
- Improved XF-Dynamic engine with SmartBLC
- Detail enhancement
- True Day/Night performance with switchable filter
- 1/2-inch CCD sensor

The EX62XF is designed and certified for covering the entire range of North American Division requirements per the NEC. Its stringent Class I, Division 1 certifications allow safe functioning at locations where ignitable concentrations of flammable gases or liquid vapors are present during normal operation. Groups covered include acetylene, hydrogen, ethylene and methane, all highly explosive gases. The EX62XF is also certified for operation in areas where ignitable

concentrations of combustible dusts (such as carbon-based or agricultural dusts) are present during normal operation.

The EX62XF is designed to CCTV industry standards for mounting hardware and motorized pan/tilt devices.

Functions

Applications

- Chemical factories
- Petroleum refineries, oil and gas processing
- Utility gas plants
- Grain elevators, flour mills
- Dry cleaning plants
- Pharmaceutical plants
- Coal and carbon processing
- Aircraft hangars
- Spray finishing areas
- Munitions and fuel storage facilities



Notice

The use of explosion protected housings may be subject to local or regional regulatory approval. The authorities having jurisdiction for each installation and application may vary and their respective requirements may differ. The integration of your equipment with the EX62XF may also be subject to local authority approval.

Certifications and approvals

CSA-NRTL	LR 113310
Class	9098 01 / 81 - Miscellaneous - for Hazardous Locations
Safety	UL / CSA
	UL 508, Sixteenth Edition - Industrial Control Equipment
	UL 698, Eleventh Edition - Industrial Control Equipment for Use in Hazardous (Classified) Locations
	UL 1203 Explosion-Proof and Dust-Ignition-Proof Electrical Equipment for Use in Hazardous (Classified) Locations
	CSA C22.2 No.0-M1991 General Electrical Requirements
	CSA C22.2 No.0.4-M1982 Bonding and Grounding of Electrical Equipment (Protective Grounding)
	CSA C22.2 No.25-M1966 Enclosures for Use in Class II Groups E, F, and G Hazardous Locations
	CSA C22.2 No.30-M1986 Explosion-proof Enclosures for Use in Class I Hazardous Locations
	CSA C22.2 No.94-M1991 Special Purpose Enclosures
	CSA C22.2 No.142-M1987 Process Control Equipment
	Class I, Div 1, 2, Groups A, B, C, D
	Class II, Div 1, 2, Groups E, F, G
	Class III
Operational	Temperature Code T6 at maximum ambient temperature 50°C (122°F)
Environmental	CSA / NEMA TYPE 4



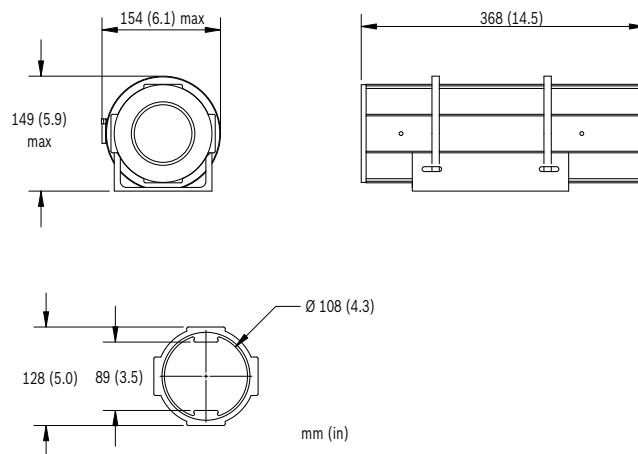
Notice

Product is not ATEX certified.

Region	Certification
Canada	CSA

Installation/configuration notes

Dimensions



Technical specifications

Electrical

Rated Voltage	12-24 VDC
	12-24 VAC (50/60 Hz)
Power Consumption	40 W
Imager	Interline transfer CCD, 1/2-inch image format
Active Pixels	
PAL Model	752 H x 582 V
NTSC Model	768 H x 492 V

Sensitivity (3200 K, scene reflectivity 89%, F1.2)

	Full video (100 IRE)	Usable picture (50 IRE)	Usable picture (30 IRE)
Color	1.40 lx (0.13 fc)	0.31 lx (0.029 fc)	0.0991 lx (0.0097 fc)
Color + SensUp 10x	0.14 lx (0.013 fc)	0.031 lx (0.0029 fc)	0.00991 lx (0.0009 fc)
Monochrome	0.57 lx (0.053 fc)	0.121 lx (0.0112 fc)	0.0391 lx (0.0036 fc)
Monochrome + SensUp 10x	0.057 lx (0.0053 fc)	0.0121 lx (0.00112 fc)	0.00391 lx (0.00036 fc)

Horizontal Resolution	540 TVL
Signal-to-Noise-Ratio	> 50 dB
Video Output	1 Vpp, 75 Ohm
Y/C Output	Y: 1 Vpp / C: 0.3 Vpp

Synchronization	Internal, Line Lock, HV-lock and Genlock (Burst lock) selectable
Shutter	Auto (1/50 [1/60] to 1/10000) selectable Auto (1/50 [1/60] to 1/50000) automatic flickerless, fixed selectable
Sensitivity up	Adjustable from Off up to 10x
Day/Night	Color, Mono, Auto
Auto Black	Automatic continuous, Off
Dynamic engine	XF-Dynamic, SmartBLC
Dynamic range	96 dB (16-bit image processing)
Dynamic Noise Reduction	Auto, On/off selectable
Sharpness	Sharpness enhancement level selectable
SmartBLC	On/Off
AGC	AGC On or Off (0 – 30 dB) selectable
Peak White Invert	On/Off
White Balance	ATW, ATWhold and manual (2500 to 10000K)
Alarm Output	VMD or Bilinx
Alarm Input (TTL)	Profile switching, +3.3 V nominal, +40 VDC max.
Alarm Output Relay	30 VAC or +40 VDC, Max 0.5 A continuous, 10 VA
External Synchronization Input	75 ohm or high impedance selectable
Cable Compensation	Up to 1000 m (3000 ft) coax without external amplifiers (automatic set-up in combination with Bilinx coaxial communication)
Camera ID	17 character editable string, position selectable
Lens Types	4-12 mm IR-corrected, or 10-40 mm IR-corrected
Modes	6 preset programmable modes
Remote Control	Bilinx coaxial bi-directional communication
Video Motion Detection	One area, fully programmable
Privacy Masking	Four independent areas, fully programmable
Controls	OSD with soft-key operation (multi-lingual)

Mechanical

Construction	Robust copper-free aluminum extrusion with four ¾-in NPT conduit entries
Brackets	Cradle with stainless steel straps included

View Window	Tempered glass
Weight	8.5 kg (18 lb)
Dimensions	149 x 154 x 368 mm (5.9 x 6.1 x 14.5 in) including bracket and straps

Environmental

Operating Temperature	-50°C to +50°C (-58°F to +122°F)
-----------------------	----------------------------------

Ordering information

EX62XF6V0412H-N Explosion-protected Camera

Explosion-protected housing with Dinion2XF LTC 0630, 4-12 mm lens, heater/blower, NTSC
Order number **EX62XF6V0412H-N**

EX62XF6V1040H-N Explosion Protected Camera

Explosion-protected housing with Dinion2X LTC 0630, 10-40 mm lens, heater/blower, NTSC
Order number **EX62XF6V1040H-N**

EX62XF6V0412H-P Explosion Protected Camera

Explosion-protected housing with Dinion2X LTC 0630, 4-12 mm lens, heater/blower, PAL
Order number **EX62XF6V0412H-P**

EX62XF6V1040H-P Explosion Protected Camera

Explosion-protected housing with Dinion2X LTC 0630, 10-40 mm lens, heater/blower, PAL
Order number **EX62XF6V1040H-P**

Accessories

EX62-HSG Explosion Protected Camera Housing

14 in. Explosion protected camera housing
Order number **EX62-HSG**

EX62-HSG-H Explosion Protected Camera Housing

14 in. Explosion protected camera housing with 24 VAC heater/blower
Order number **EX62-HSG-H**

EXSH.62 Sunhood

Sunhood
Order number **EXSH.62**

EXMB.004B Ceiling and Pedestal Bracket

Mounting Bracket, HD, Pan/Tilt Adjust - Ceiling Mount for EX52, EX62, black
Order number **EXMB.004B**

EXMB.005B Heavy Duty Wall Bracket

Mounting Bracket, HD, Pan/Tilt Adjust - Wall Mount, black
Order number **EXMB.005B**

UPA-2450-60 Power Supply, 120 V, 60 Hz

Indoor, 120 VAC, 60 Hz In; 24 VAC, 50 VA Out
Order number **UPA-2450-60**

UPA-2450-50 Power Supply, 220 V, 50 Hz

Indoor, 220 VAC, 50 Hz In; 24 VAC, 50 VA Out

Order number **UPA-2450-50**

Software Options

VP-CFGSFT Configuration Software

for cameras using Bilinx, includes VP-USB Adaptor

Order number **VP-CFGSFT**

Represented by:

Americas:

Bosch Security Systems, Inc.
130 Perinton Parkway
Fairport, New York, 14450, USA
Phone: +1 800 289 0096
Fax: +1 585 223 9180
security.sales@us.bosch.com
www.boschsecurity.us

Europe, Middle East, Africa:

Bosch Security Systems B.V.
P.O. Box 80002
5617 BA Eindhoven, The Netherlands
Phone: + 31 40 2577 284
Fax: +31 40 2577 330
emea.securitysystems@bosch.com
www.boschsecurity.com

Asia-Pacific:

Robert Bosch (SEA) Pte Ltd, Security Systems
11 Bishan Street 21
Singapore 573943
Phone: +65 6571 2808
Fax: +65 6571 2699
apr.securitysystems@bosch.com
www.boschsecurity.asia

China:

Bosch (Shanghai) Security Systems Ltd.
201 Building, No. 333 Fuquan Road
North IBP
Changning District, Shanghai
200335 China
Phone +86 21 22181111
Fax: +86 21 22182398
www.boschsecurity.com.cn

America Latina:

Robert Bosch Ltda Security Systems Division
Via Anhanguera, Km 98
CEP 13065-900
Campinas, Sao Paulo, Brazil
Phone: +55 19 2103 2860
Fax: +55 19 2103 2862
latam.boschsecurity@bosch.com
www.boschsecurity.com