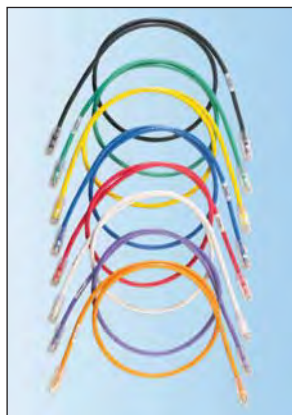




TX6™ PLUS UTP Patch Cords

- Exceed ANSI/TIA-568-C.2 Category 6 and ISO 11801 Class E standards
- Meet requirements of IEEE 802.3af and IEEE 802.3at for PoE applications
- Each patch cord is 100% performance tested and wired T568B
- Color-coded, keyed modular plugs mechanically and visually distinguish connections to prevent unintentional mating with unlike keyed or non-keyed jack modules accommodating more discrete networks
- Constructed of Category 6, 24 AWG UTP stranded cable and TX6™ PLUS Modular Plugs; plug contacts plated with 50 microinches of gold for superior performance
- Plug meets all applicable ANSI/TIA/EIA-968-A requirements and exceeds IEC 60603-7 specifications
- Slender strain relief boot provides easy access in high density applications

- Plug uses an integral pair manager to optimize performance and consistency by reducing untwisting of conductors within the plug
- Perform in center of TIA/EIA component range, ensuring interoperability and excellent performance
- Labels on patch cords provide identification of performance level, length, and quality control number
- Patented tangle-free latch prevents snags and provides easy release, saving time on frequent moves, adds, and changes
- Optional patch cord color bands snap on and off individual patch cables offering endless color-coding options
- Optional RJ45 plug lock-in device blocks unauthorized removal of cable, IP phone, other networking equipment, or critical connection
- Third party tested for Category 6 component compliance



Part Number	Part Description	Length (Ft.)	Cable Color	Std. Pkg. Qty.	Std. Ctn. Qty.
Non-Keyed Patch Cord					
UTPSP3Y‡	Category 6, UTP patch cord with TX6™ PLUS Modular Plugs on each end.	3	Off White	1	10
Keyed Patch Cord					
UTPKSP3BL*	Keyed, Category 6, UTP patch cord with TX6™ PLUS Keyed Modular Plug on one end and TX6™ PLUS Non-Keyed Modular Plug on the other end.	3	Black	1	10

‡For lengths 1 to 20 feet (increments of one foot) and 25, 30, 35, 40 feet change the length designation in the part number to the desired length. For standard cable colors other than Off White, add suffix BL (Black), BU (Blue), GR (Green), RD (Red), YL (Yellow), OR (Orange), or VL (Violet) before Y at the end of the part number. For example, the part number for a blue 15-foot patch cord is UTPSP15BUY.

*For lengths other than 3 feet (5, 7, 10, 14 feet) change the length designation in the part number to the desired length. For standard cable colors other than Black, replace suffix BL (Black) with BU (Blue), RD (Red), YL (Yellow), GR (Green), or OR (Orange), each color representing a different keyed configuration.

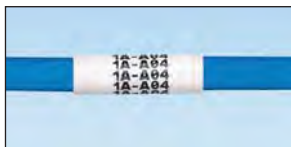
Contact customer service for universal reference patch cords.

Patch cord color bands available on page B.91 of SA-NCCB51.

RJ45 plug lock-in device available on page B.89 of SA-NCCB51.

To ensure optimal performance, Panduit recommends use with other Panduit TX6™ PLUS components.

Labels for TX6™ PLUS UTP Patch Cords



Suggested Label Solutions for TIA/EIA-606-A Compliance				
Patch Cord Part Number	Laser/Ink Jet Desktop Printer Label	TDP43ME Thermal Transfer Desktop Printer Label	PanTher™ LS8E Hand-Held Printer Label	Cougar™ LS9 Hand-Held Printer Label
All Patch Cords	S100X150YAJ	S100X150VATY	S100X150VAC	T100X000CBC-BK

For complete labeling solutions and product information, reference charts on pages O.1 – O.22 of SA-NCCB51.