



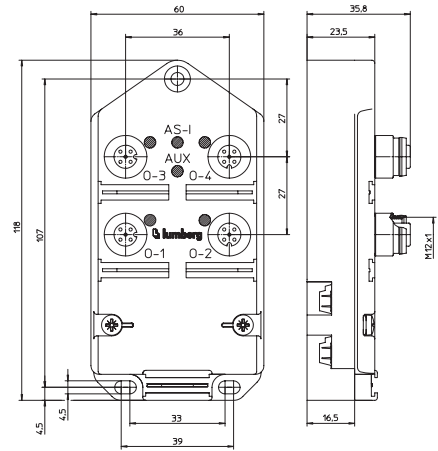
0910 ASL 403



AS-Interface Module with 4-Digital Outputs

4 OUT

AS-Interface flat cable module with 4 digital outputs to connect standard actuators, combined M12 socket.



Bit Assignment

Bit	-	-	-	-	3	2	1	0
	M12 Output							
Byte 0	-	-	-	-	0-4	0-3	0-2	0-1

Diagnostic Indication

LED	Indication	Condition
0-1..4	yellow	channel status
U-AS-i	green	AS-Interface power supply active
AUX	green	actuator supply active

Pin Assignments

Output M12

1	n.c.
2	n.c.
3	GND (0 V)
4	OUT
5	earth



Be Certain with Belden

AS-Interface Module with 4-Digital Outputs

0910 ASL 403

Technical Data

Environmental

Degree of protection	IP 67
Operating temperature range	-25°C (-13°F) to +80°C (+176°F)
Weight	200 g
Housing material	PUR

Bus system

AS-Interface profile	8.0
I/O configuration	8 hex
ID code	0 hex
Support A/B addressing	no

Electronics power supply

Rated voltage	AS-Interface net
Voltage range	26.5–31.6 V DC
Power consumption	max. 75 mA
Reverse polarity protection	yes
Indication	LED green

Output power supply

Rated voltage	24 V DC
Voltage range	10–30 V
Potential separation	present
Reverse polarity protection	yes/electronic
Indication	LED green

Outputs

Rated output current	Type 2 A acc. to IEC 61131-2-2 2 A per channel
Short circuit-proof	yes
Max. output current	4 A per module
Overload-proof	yes
Number of digital channels	4
Channel type N.O.	p-switching
Channel status indicator	LED yellow per channel

Included in delivery / Accessories

Dust covers M12	2 pieces
Attachable label	10 pieces

Part Number

0910 ASL 403



The application of these products in harsh environments should always be checked before use.
Specifications subject to alteration.