

RECESSED DOOR/WINDOW TRANSMITTER

Cat. No. 56A00-1

Installation Instructions

WARNINGS AND CAUTIONS

- Read and understand all instructions. Follow all warnings and instructions marked on the product.
- Do not use this product near water - e.g., near a tub, wash basin, kitchen sink or laundry tub, in a wet basement, or near a swimming pool.
- Never push objects of any kind into this product through openings, as they may touch dangerous voltages.
- Never install communications wiring or components during a lightning storm.
- Never install communications components in wet locations unless the components are designed specifically for use in wet locations.
- Never touch uninsulated wires or terminals unless the wiring has been disconnected at the network interface.
- Use caution when installing or modifying communications wiring or components.
- **SAVE THESE INSTRUCTIONS.**

The 56A00-1 Recessed Door/Window Transmitter is a supervised wireless contact that can be concealed with a door or window frame for virtual transparency. It works with the Leviton 45A00-1 Wireless Receiver and is supplied with a replaceable lithium battery that lasts for 5 years under normal operation.

OPENING THE 56A00-1

Use a flathead screw driver to open the 56A00-1 to change tops or access the battery (See figure 1).

NOTICE: Before removing the circuit board, notice that it fits inside a channel on the inside of the case. When replacing the board, ensure you fit it back into the same channel for proper fit.

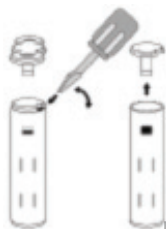


Figure 1

INSTALL BATTERY

Use care when installing the battery and observe the correct polarity when the battery is inserted (See Figure 2). Use only Panasonic Lithium CR2 batteries for replacement. When replacing battery use a flathead screw driver to open the top (See Opening the 56A00-1).

WARNING! Battery may explode if mistreated. Do not recharge, disassemble or dispose of in fire.

MOUNT TRANSMITTER AND MAGNET

It is important to select the proper placement of the recessed transmitter and magnet. The transmitter has two separate tops that allow a flush mount or screw mount in case you accidentally over drill the hole or require extra support to ensure the transmitter does not move. The magnet does not have a second top with a flange to screw it into place so you must be extra careful to ensure that the magnet is tightly in place once installed.



Figure 2

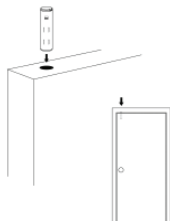
Step 1: Install the CR2 battery if you have not already done so (See Install Battery).

Step 2: Write down the serial number printed on the outside of the 56A00-1 case or on the board inside where you place the battery.

Step 3: Select a location on the door or window frame for the 56A00-1 transmitter and magnet to be installed. Use a marker or piece of clay to mark and ensure that the two holes that you intend to drill are lined up directly across from each other.

Step 4: Using an 11/16" drill bit, slowly drill the first hole for the magnet. The 56A00-1 was specifically designed to be slightly larger than an 11/16" hole so you will need to carefully drill to fit by slowly routing the hole little by little to ensure a snug fit.*

Step 5: Drill the mating hole for the transmitter and use either the standard flush mount cap and insert the transmitter for a snug fit or use the flanged cap and use the included screws for mounting the transmitter to the door or window frame.



This is only one option when mounting the 56A00-1. You must assess the best mounting method based on the application.

* If you accidentally drill the magnet side too big and it is loose, you can place the transmitter in that position and use the flanged cap to screw it into position.

ENROLLING THE 56A00-1

To enroll the 56A00-1, put the 45A00-1 Wireless Receiver in to Setup mode and advance to an unused address location. Activate the reed switch by removing the magnet from the transmitter for 1 second, then replacing it. Refer to the Installation Instructions for the 45A00-1 for additional information.

FCC Compliance

This device complies with part 15 of the FCC Rules. Operation is subject to the following two conditions: (1) This device may not cause harmful interference, and (2) this device must accept any interference received, including interference that may cause undesired operation.

FOR CANADA ONLY

For warranty information and/or product returns, residents of Canada should contact Leviton in writing at **Leviton Manufacturing of Canada Ltd to the attention of the Quality Assurance Department, 165 Hymus Blvd, Pointe-Claire (Quebec), Canada H9R 1E9** or by telephone at **1 800 405-5320**.

LEVITON LIMITED WARRANTY

Leviton warrants to the original consumer purchaser and not for the benefit of anyone else that products manufactured by Leviton under the Leviton brand name ("Product") will be free from defects in material and workmanship for the time periods indicated below, whichever is shorter: • **OmniPro II and Lumina Pro:** three (3) years from installation or 42 months from manufacture date. • **OmniLT, Omni ILE, and Lumina:** two (2) years from installation or 30 months from manufacture date. • **Thermostats, Accessories:** two (2) years from installation or 30 months from manufacture date. • **Batteries:** Rechargeable batteries in products are warranted for ninety (90) days from date of purchase. **Note:** Primary (non-rechargeable) batteries shipped in products are not warranted. **Products with Windows® Operating Systems:** During the warranty period, Leviton will restore corrupted operating systems to factory default at no charge, provided that the product has been used as originally intended. Installation of non-Leviton software or modification of the operating system voids this warranty. Leviton's obligation under this Limited Warranty is limited to the repair or replacement, at Leviton's option, of Product that fails due to defect in material or workmanship. Leviton reserves the right to replace product under this Limited Warranty with new or remanufactured product. **Leviton will not be responsible for labor costs of removal or reinstallation of Product.** The repaired or replaced product is then warranted under the terms of this Limited Warranty for the remainder of the Limited Warranty time period or ninety (90) days, whichever is longer. This Limited Warranty does not cover PC-based software products. **Leviton is not responsible for conditions or applications beyond Leviton's control. Leviton is not responsible for issues related to improper installation, including failure to follow written Installation and operation instructions, normal wear and tear, catastrophe, fault or negligence of the user or other problems external to the Product.** To view complete warranty and instructions for returning product, please visit us at www.leviton.com.

Use herein of third party trademarks, service marks, trade names, brand names and/or product names are for informational purposes only, are/may be the trademarks of their respective owners; such use is not meant to imply affiliation, sponsorship, or endorsement.

For Technical Assistance Call: 800-824-3005 - www.leviton.com