

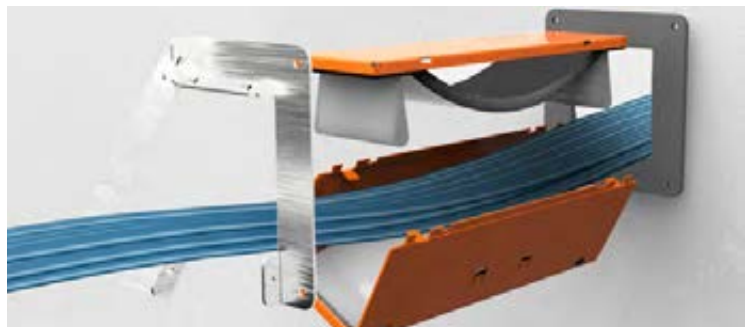
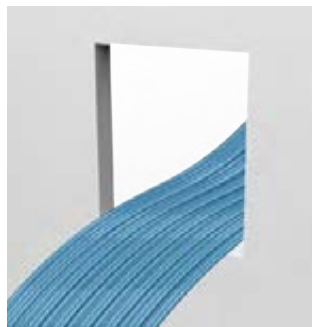
OVERVIEW

The EZ-Path 44+ Split Retro Plate is designed to allow a single Series 44+ Pathway to be installed around old work in fire rated walls. The two piece plates and split intumescent gaskets are designed for easy installation around existing cables or to replace non self-sealing sleeves. The 44+ pathway splits apart easily and is designed to be installed in up to a 6 in. (152mm) diameter round opening.

* Compatible with all Series 44+ accessories

APPLICATIONS

- New Work Installations
- Old Work Installations
- Installations Around Previously Installed Nom 4" Diameter Sleeves in Gypsum Walls.



ORDERING INFORMATION

UPC# 730573	Cat No.	Description	Qty.	Weight
00148	EZP144RS	Series 44+ Split Wall Plate - Split Plates only	1	2.40 lbs (1.09 kg)
00089	EZDP144RS	Series 44+ Split Wall Plate Kit - Includes Pathway and Split Plates	1	8.02 lbs (3.64 kg)

LIMITED WARRANTY: STI warrants that its products will be free of defects for one year from the date of purchase. In the event a product does not conform to this warranty, the sole and exclusive remedy is, at STI's option, replacement of the product or refund of the purchase price. The warranty provided herein shall be void and of no effect in the event that the product is not installed in accordance with STI's published instructions, listed systems and applicable building and safety codes. THIS WARRANTY IS IN LIEU OF ALL OTHER REPRESENTATIONS AND EXPRESSED OR IMPLIED WARRANTIES (including the implied warranties of merchantability or fitness for a particular use) AND UNDER NO CIRCUMSTANCES SHALL STI BE LIABLE FOR ANY DIRECT, INDIRECT, SPECIAL, INCIDENTAL OR CONSEQUENTIAL DAMAGES OR LOSSES, INCLUDING, WITHOUT LIMITATION, ANY LOSS OF REVENUE, PROFIT OR USE. Prior to use, the user shall determine the suitability of the product for its intended use, and the user assumes all risks and liability for subsequent use. No person other than an officer of STI is authorized to bind STI to any other warranty for any product for which this warranty is issued.