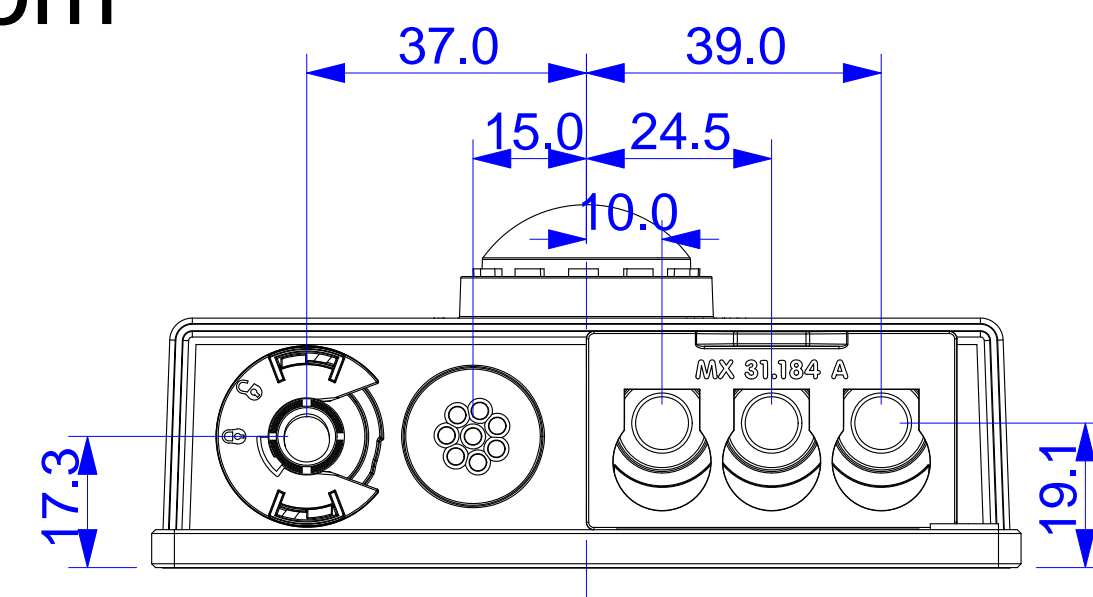
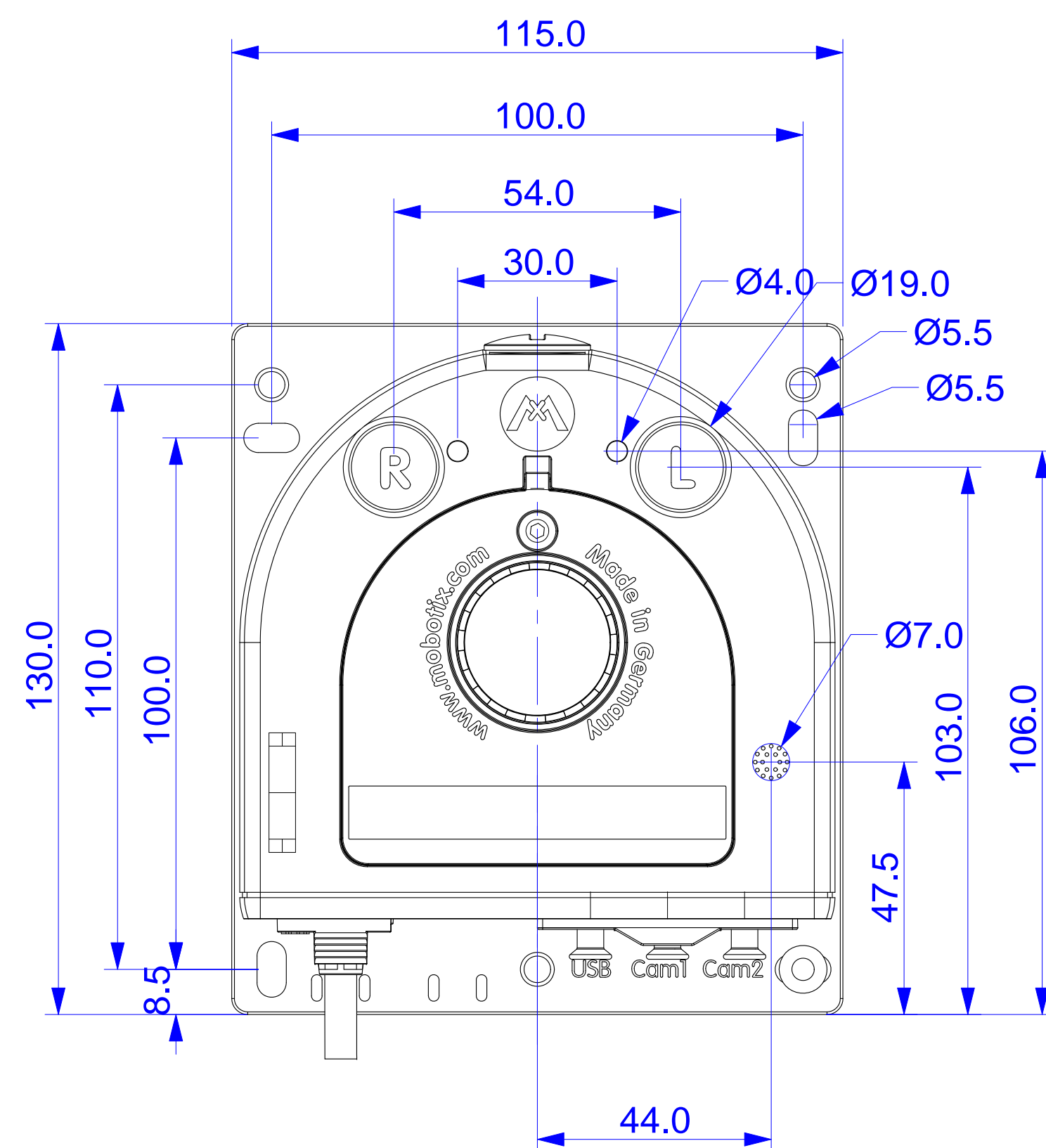


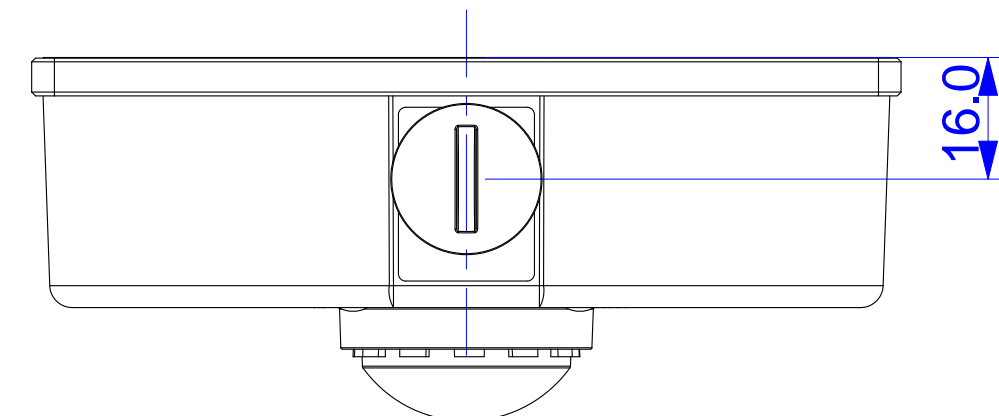
Bottom



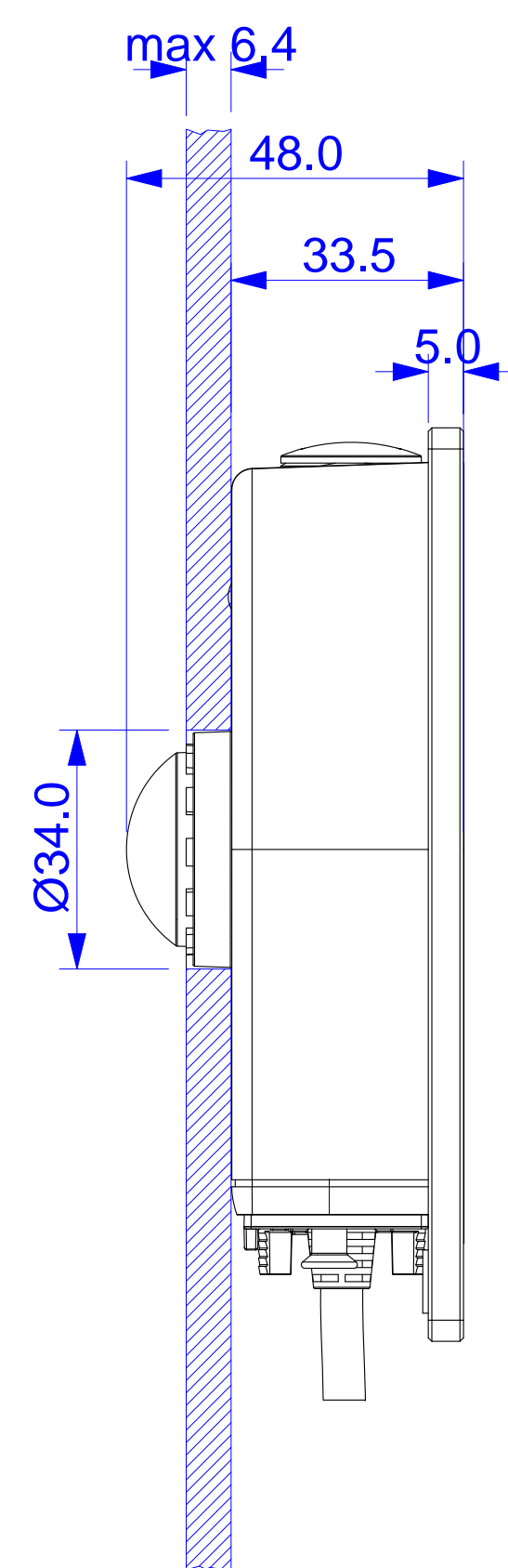
Front



Top



Side



Micro SD-Card

Camera housing

Mounting plate

Button L

LED

Button R

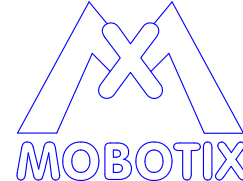
Sensor onboard

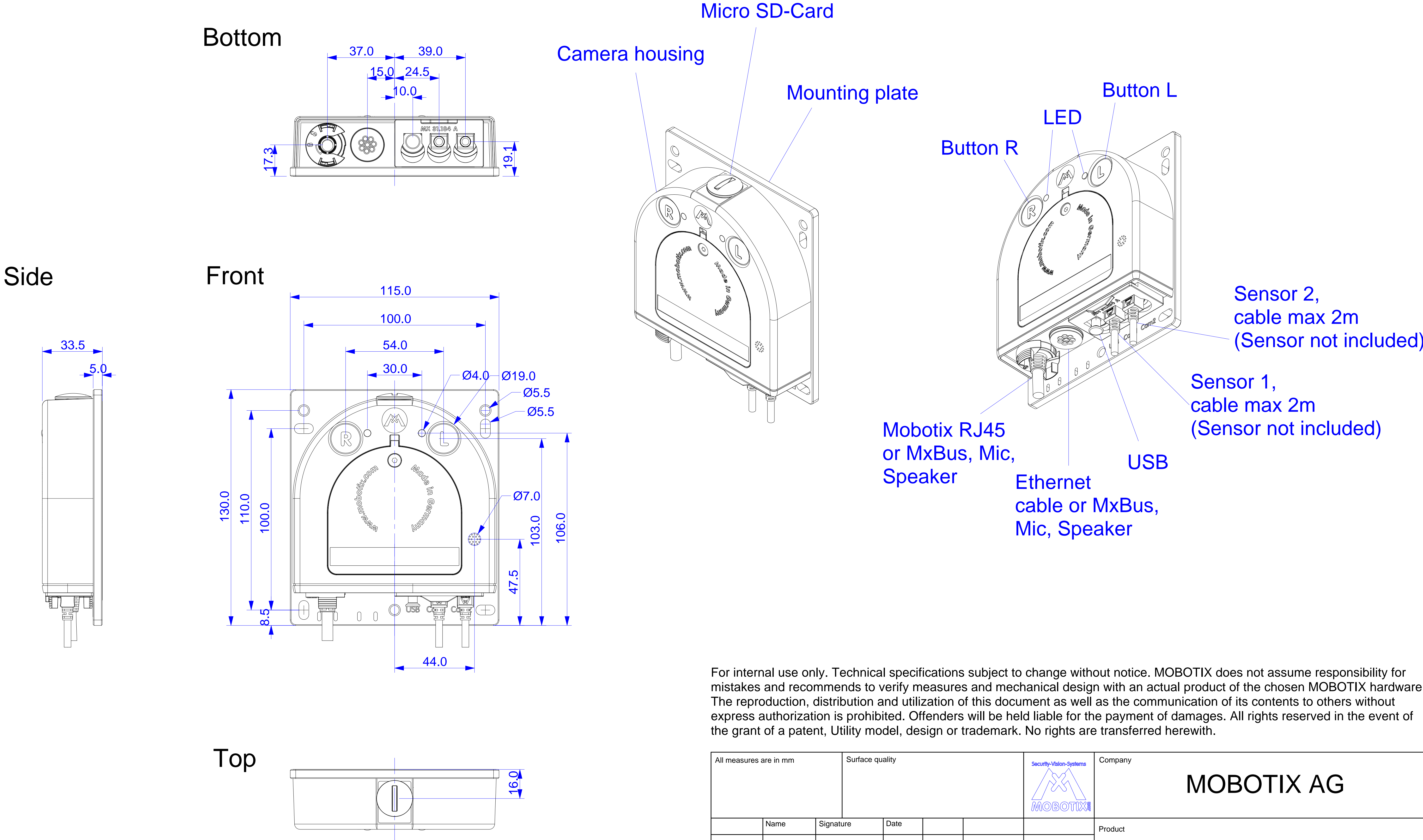
Mobotix RJ45 or MxBus, Mic, Speaker

Ethernet cable or MxBus, Mic, Speaker

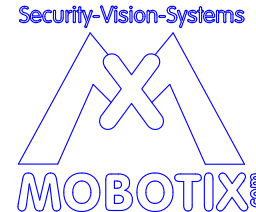
USB

For internal use only. Technical specifications subject to change without notice. MOBOTIX does not assume responsibility for mistakes and recommends to verify measures and mechanical design with an actual product of the chosen MOBOTIX hardware. The reproduction, distribution and utilization of this document as well as the communication of its contents to others without express authorization is prohibited. Offenders will be held liable for the payment of damages. All rights reserved in the event of the grant of a patent, Utility model, design or trademark. No rights are transferred herewith.

|                        |      |           |                 |          |  |   |             |  |          |            |        |  |
|------------------------|------|-----------|-----------------|----------|--|---|-------------|--|----------|------------|--------|--|
| All measures are in mm |      |           | Surface quality |          |  | <div><div>Security-Vision-Systems</div><div></div></div> | Company     |  |          | MOBOTIX AG |        |  |
|                        | Name | Signature | Date            |          |  |   | Product     |  |          |            |        |  |
| Drawn                  | SBe  |           | 07.05.12        |          |  |   | S15M Camera |  |          |            |        |  |
| Tested                 |      |           |                 |          |  |   |             |  |          |            |        |  |
| Approved               |      |           |                 |          |  |   |             |  |          |            |        |  |
| Production             |      |           |                 |          |  |   |             |  |          |            |        |  |
| Quality                |      |           |                 | Material |  |   | Drawing     |  |          |            | DIN A1 |  |
|                        |      |           |                 |          |  |   |             |  |          |            |        |  |
|                        |      |           |                 |          |  |   |             |  |          |            |        |  |
|                        |      |           |                 |          |  |   |             |  |          |            |        |  |
|                        |      |           |                 | Weight   |  |   | Scale 1:1   |  | Page 1/1 |            |        |  |

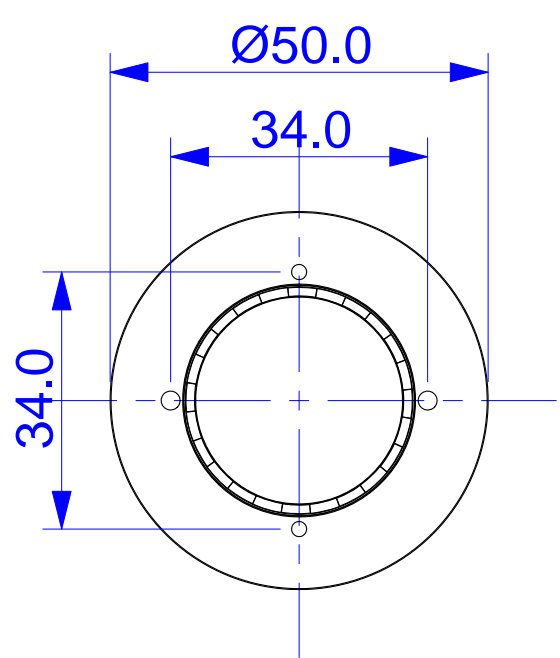


For internal use only. Technical specifications subject to change without notice. MOBOTIX does not assume responsibility for mistakes and recommends to verify measures and mechanical design with an actual product of the chosen MOBOTIX hardware. The reproduction, distribution and utilization of this document as well as the communication of its contents to others without express authorization is prohibited. Offenders will be held liable for the payment of damages. All rights reserved in the event of the grant of a patent, Utility model, design or trademark. No rights are transferred herewith.

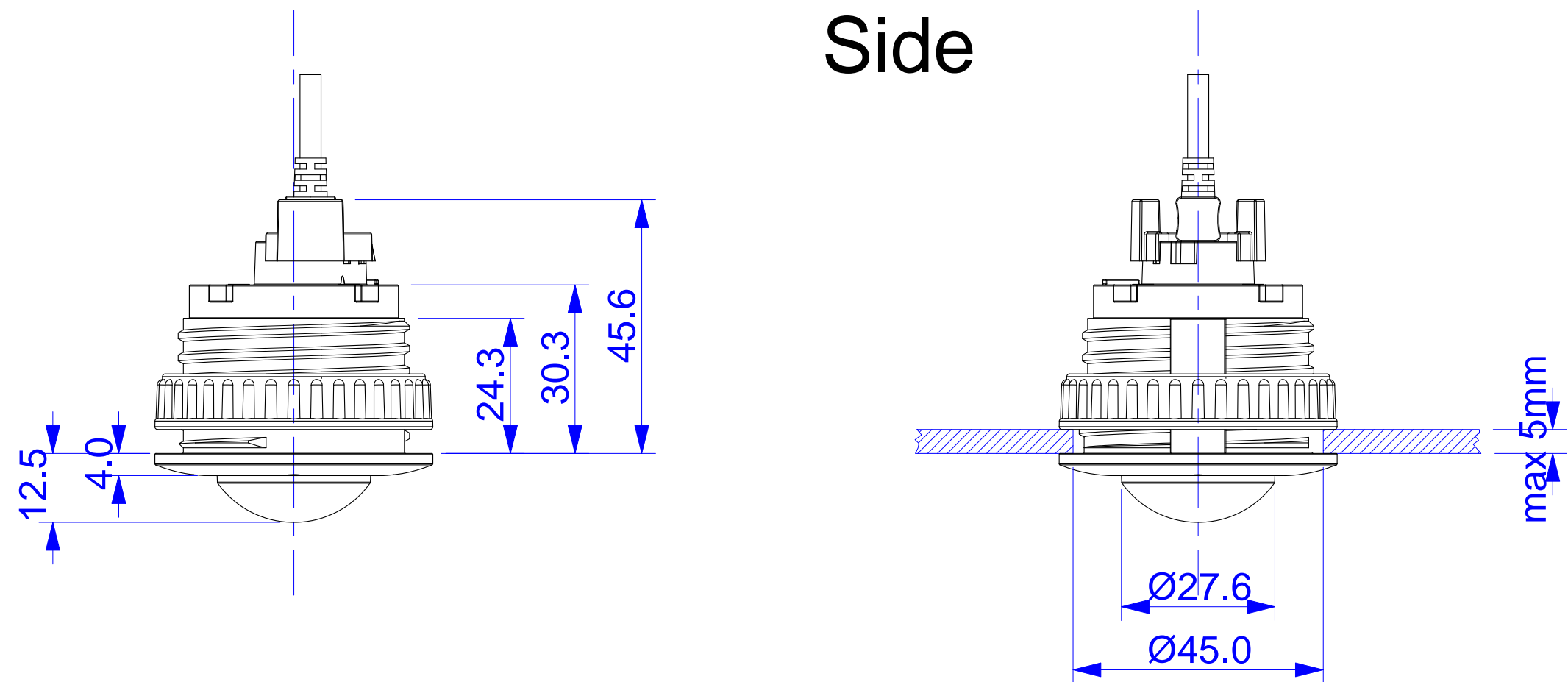
|                        |      |           |                 |          |  |   |           |  |          |            |        |
|------------------------|------|-----------|-----------------|----------|--|---|-----------|--|----------|------------|--------|
| All measures are in mm |      |           | Surface quality |          |  | <div>Security-Vision-Systems</div> <div></div> | Company   |  |          | MOBOTIX AG |        |
|                        | Name | Signature | Date            |          |  |   | Product   |  |          |            |        |
| Drawn                  | SBe  |           | 07.05.12        |          |  |   |           |  |          |            |        |
| Tested                 |      |           |                 |          |  |   |           |  |          |            |        |
| Approved               |      |           |                 |          |  |   |           |  |          |            |        |
| Production             |      |           |                 |          |  |   |           |  |          |            |        |
| Quality                |      |           |                 | Material |  |   | Drawing   |  |          |            | DIN A1 |
|                        |      |           |                 |          |  |   |           |  |          |            |        |
|                        |      |           |                 |          |  |   |           |  |          |            |        |
|                        |      |           |                 | Weight   |  |   | Scale 1:1 |  | Page 1/1 |            |        |



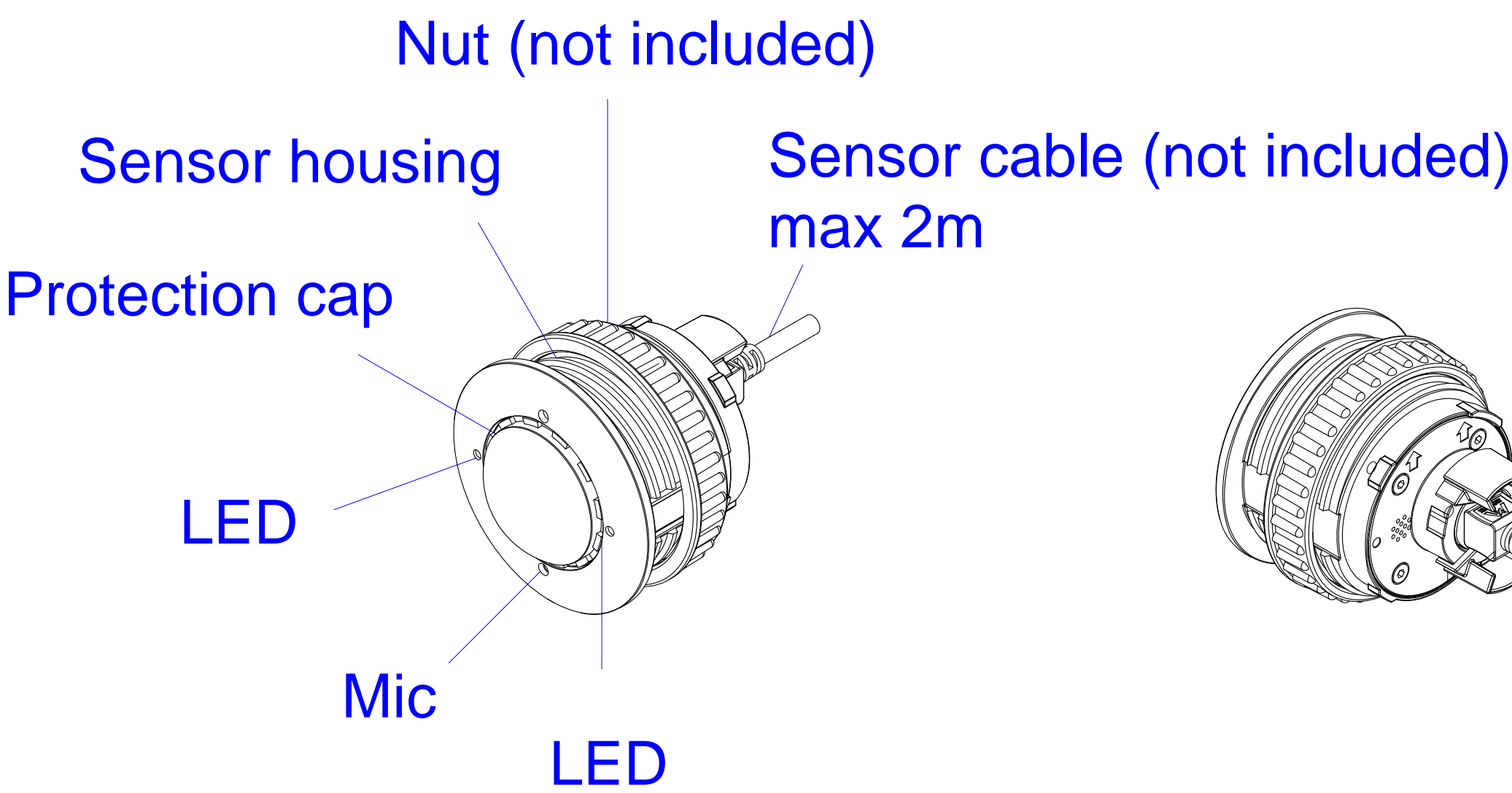
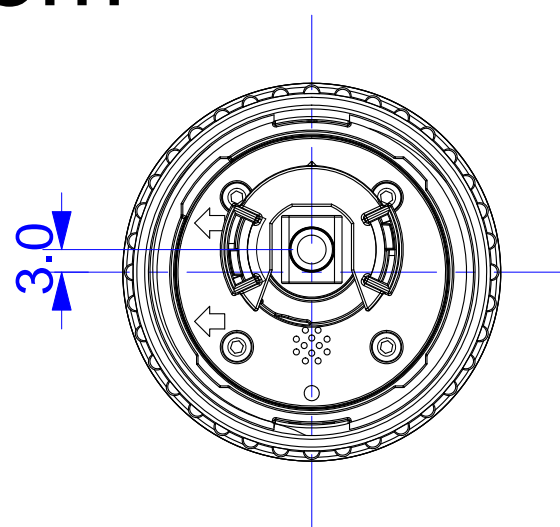
Front



Side

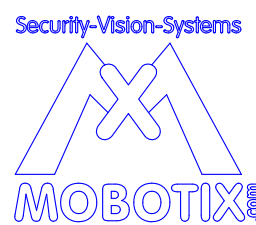


Bottom

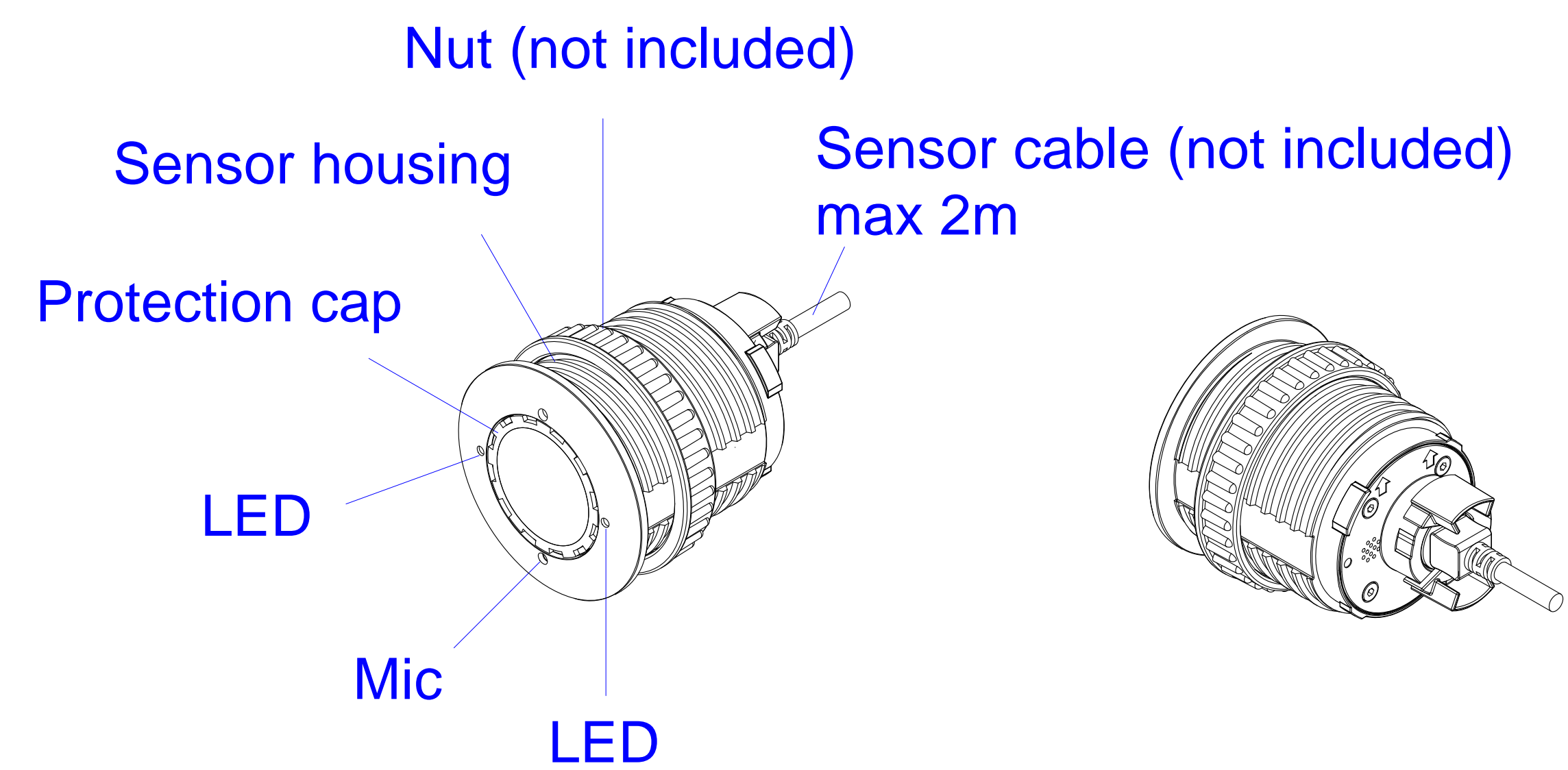
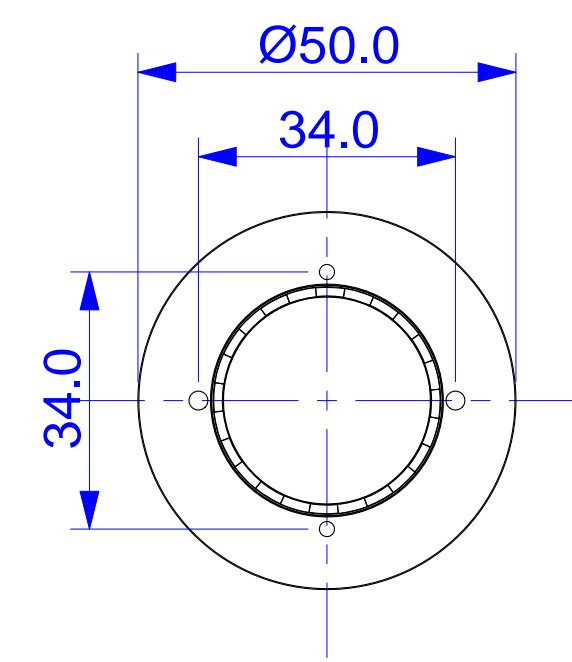


Use Mobotix  
sensor housing  
extension for  
thicker panels.

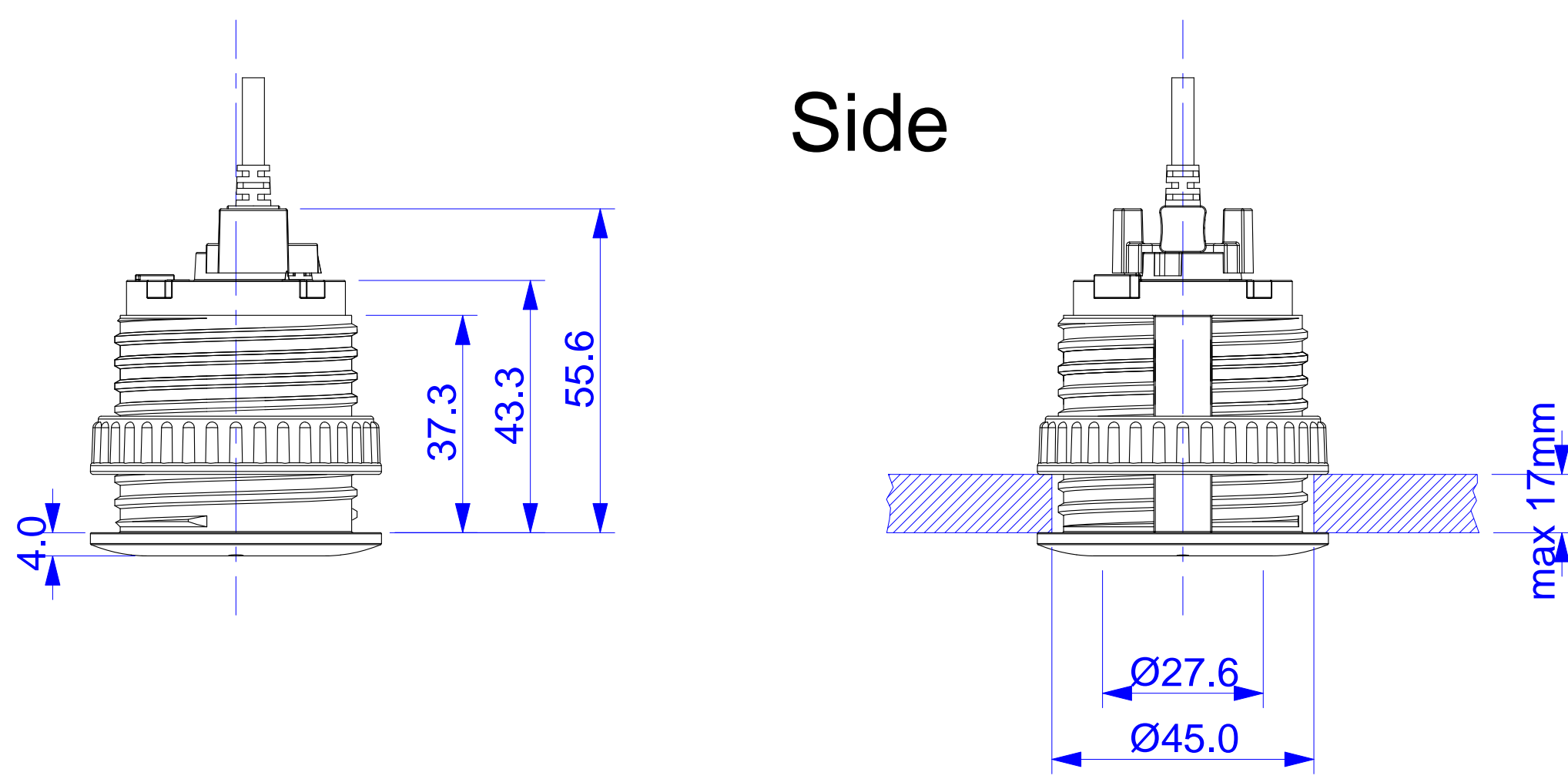
For internal use only. Technical specifications subject to change without notice. MOBOTIX does not assume responsibility for mistakes and recommends to verify measures and mechanical design with an actual product of the chosen MOBOTIX hardware. The reproduction, distribution and utilization of this document as well as the communication of its contents to others without express authorization is prohibited. Offenders will be held liable for the payment of damages. All rights reserved in the event of the grant of a patent, Utility model, design or trademark. No rights are transferred herewith.

|                        |      |           |                 |          |          |   |         |           |  |  |            |                            |        |
|------------------------|------|-----------|-----------------|----------|----------|---|---------|-----------|--|--|------------|----------------------------|--------|
| All measures are in mm |      |           | Surface quality |          |          |  | Company |           |  |  | MOBOTIX AG |                            |        |
|                        | Name | Signature |                 | Date     |          |   | Product |           |  |  |            | L12 Sensor<br>CeilingMount |        |
| Drawn                  | SBe  |           |                 | 07.05.12 |          |   |         |           |  |  |            |                            |        |
| Tested                 |      |           |                 |          |          |   |         |           |  |  |            |                            |        |
| Approved               |      |           |                 |          |          |   |         |           |  |  |            |                            |        |
| Production             |      |           |                 |          |          |   |         |           |  |  |            |                            |        |
| Quality                |      |           |                 |          | Material |   |         | Drawing   |  |  |            |                            | DIN A1 |
|                        |      |           |                 |          |          |   |         |           |  |  |            |                            |        |
|                        |      |           |                 |          |          |   |         |           |  |  |            |                            |        |
|                        |      |           |                 |          |          |   |         |           |  |  |            |                            |        |
|                        |      |           |                 |          | Weight   |   |         | Scale 1:1 |  |  | Page 1/1   |                            |        |

Front

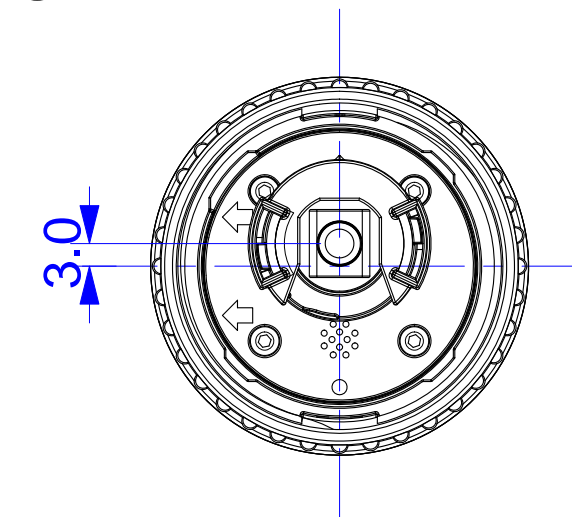


Side

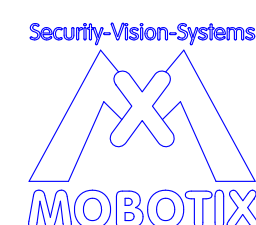


Use Mobotix sensor housing extension for thicker panels.

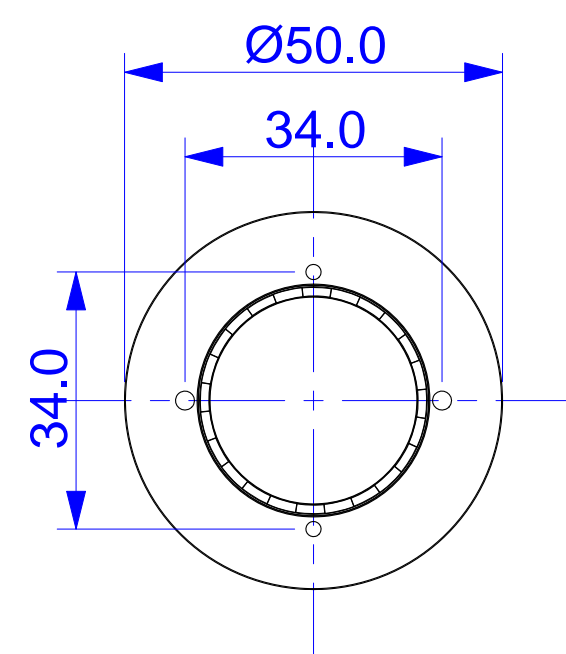
Bottom



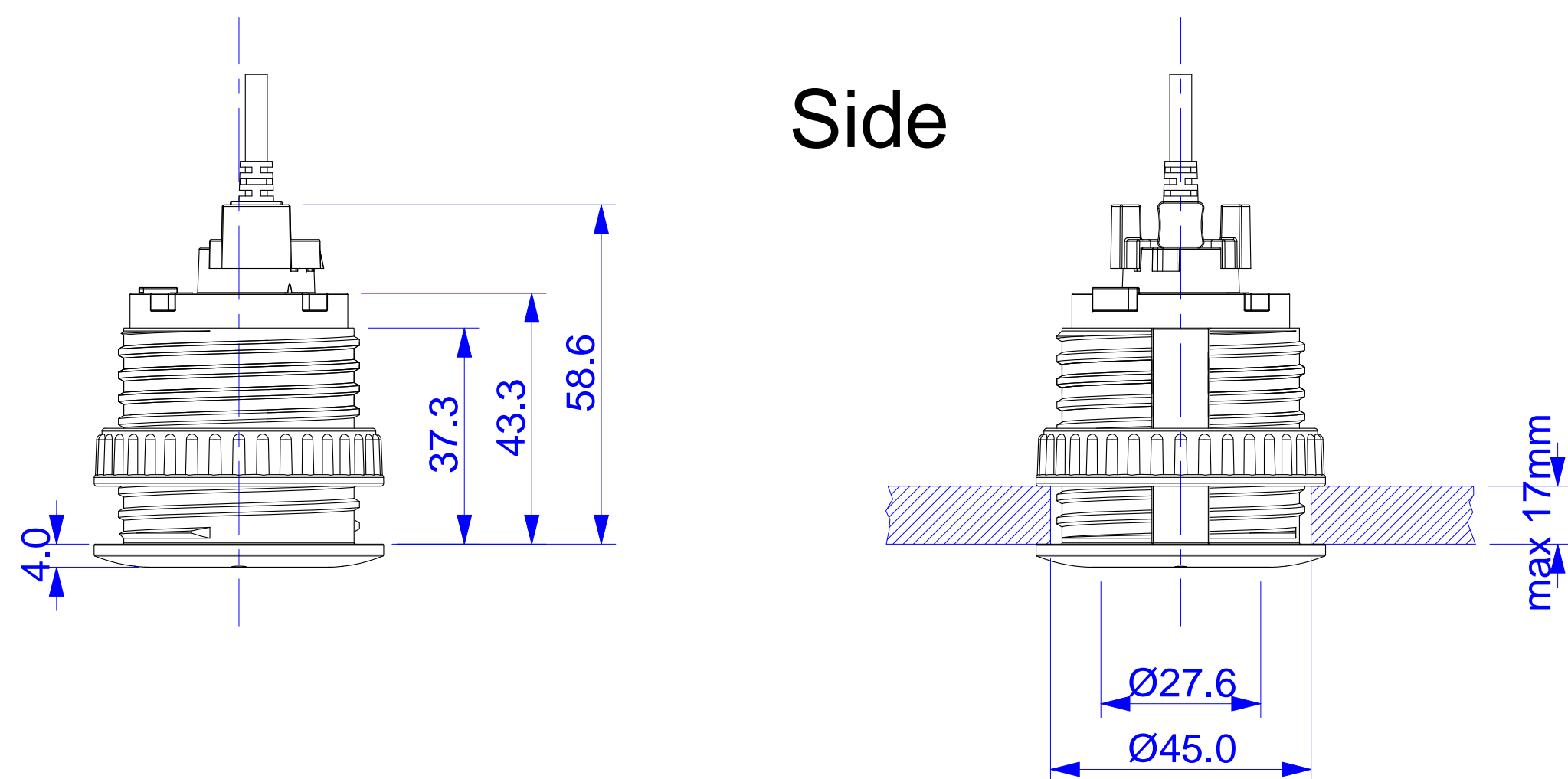
For internal use only. Technical specifications subject to change without notice. MOBOTIX does not assume responsibility for mistakes and recommends to verify measures and mechanical design with an actual product of the chosen MOBOTIX hardware. The reproduction, distribution and utilization of this document as well as the communication of its contents to others without express authorization is prohibited. Offenders will be held liable for the payment of damages. All rights reserved in the event of the grant of a patent, Utility model, design or trademark. No rights are transferred herewith.

|                        |      |           |                 |          |  |   |  |  |          |            |  |  |
|------------------------|------|-----------|-----------------|----------|--|---|--|--|----------|------------|--|--|
| All measures are in mm |      |           | Surface quality |          |  | <div><div>Security-Vision-Systems</div><div></div></div> | Company  |  |          | MOBOTIX AG |  |  |
|                        | Name | Signature | Date            |          |  |   | Product<br><br>L25, L51 Sensor<br>CeilingMount |  |          |            |  |  |
| Drawn                  | SBe  |           | 07.05.12        |          |  |   |  |  |          |            |  |  |
| Tested                 |      |           |                 |          |  |   |  |  |          |            |  |  |
| Approved               |      |           |                 |          |  |   |  |  |          |            |  |  |
| Production             |      |           |                 |          |  |   |  |  |          |            |  |  |
| Quality                |      |           |                 | Material |  |   | Drawing  |  |          | DIN A1     |  |  |
|                        |      |           |                 |          |  |   |  |  |          |            |  |  |
|                        |      |           |                 |          |  |   |  |  |          |            |  |  |
|                        |      |           |                 | Weight   |  |   | Scale 1:1                                      |  | Page 1/1 |            |  |  |

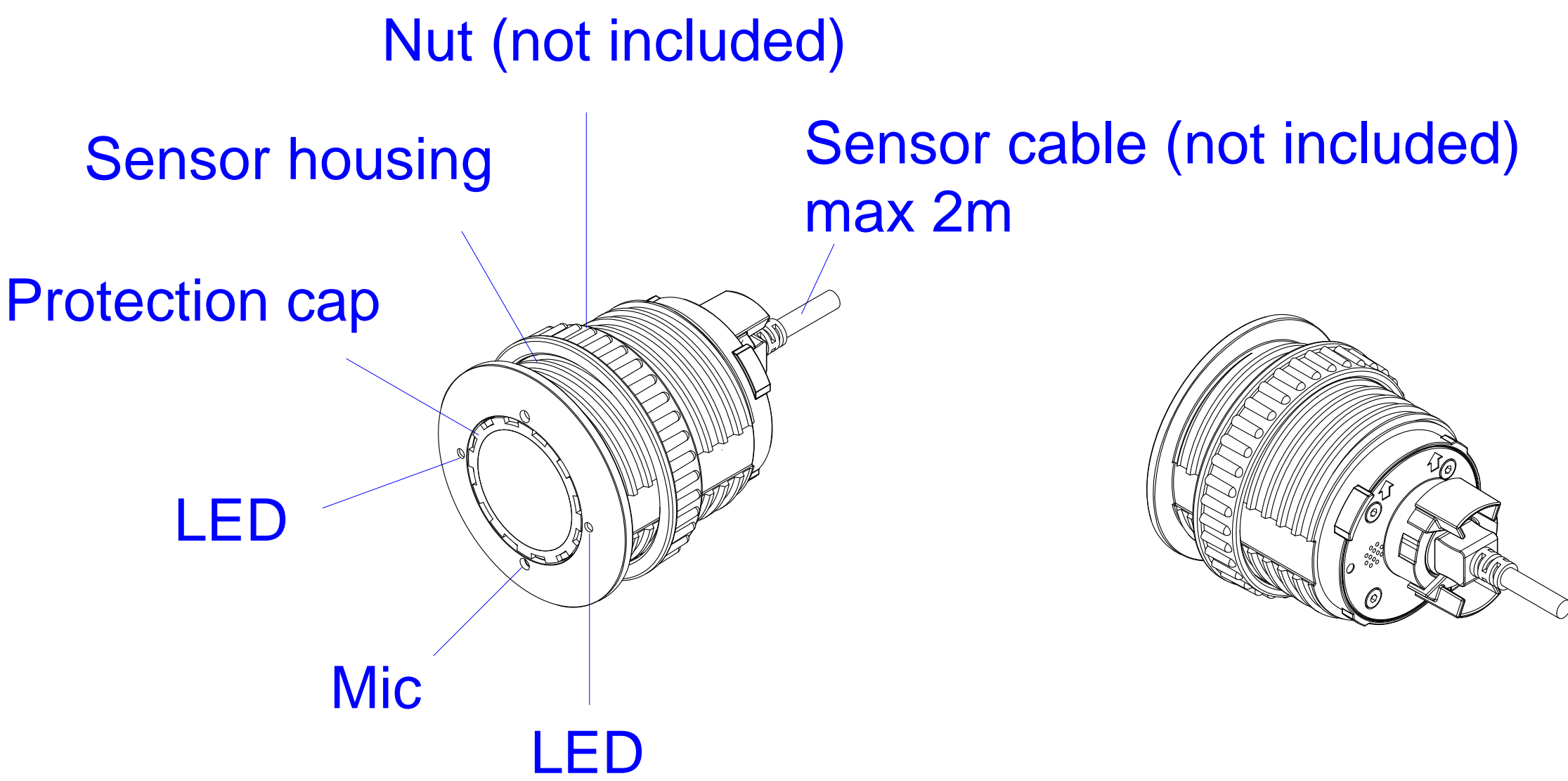
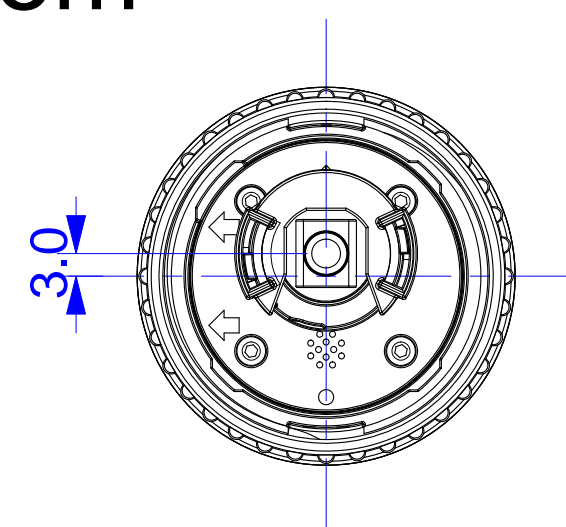
Front



Side

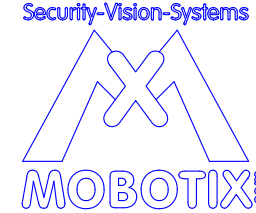


Bottom



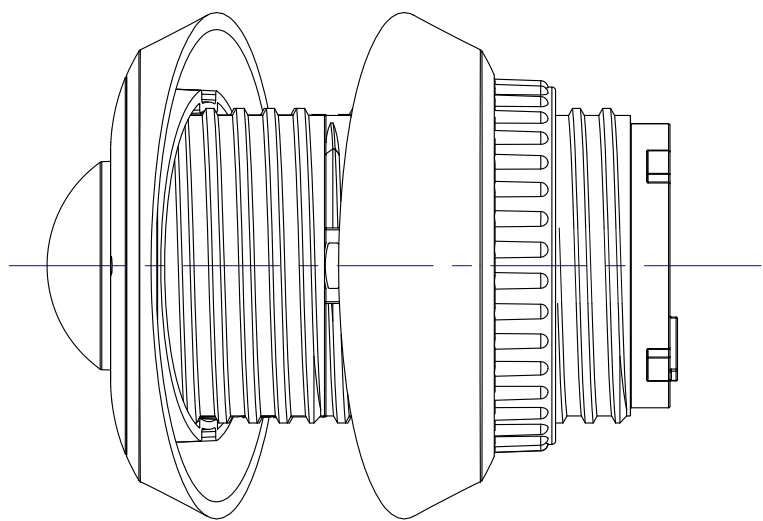
Use Mobotix  
sensor housing  
extension for  
thicker panels.

For internal use only. Technical specifications subject to change without notice. MOBOTIX does not assume responsibility for mistakes and recommends to verify measures and mechanical design with an actual product of the chosen MOBOTIX hardware. The reproduction, distribution and utilization of this document as well as the communication of its contents to others without express authorization is prohibited. Offenders will be held liable for the payment of damages. All rights reserved in the event of the grant of a patent, Utility model, design or trademark. No rights are transferred herewith.

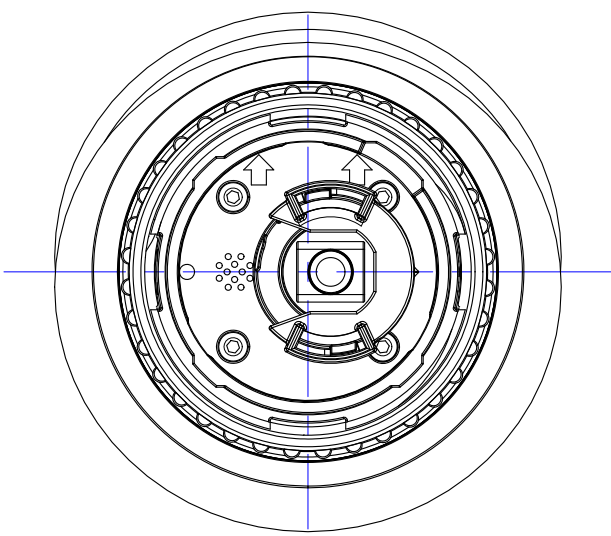
|                        |      |           |                 |          |  |  |   |         |  |          |            |                                       |  |
|------------------------|------|-----------|-----------------|----------|--|--|---|---------|--|----------|------------|---------------------------------------|--|
| All measures are in mm |      |           | Surface quality |          |  |  |  | Company |  |          | MOBOTIX AG |                                       |  |
|                        | Name | Signature | Date            |          |  |  | Product   |         |  |          |            | L38, L76, L160 Sensor<br>CeilingMount |  |
| Drawn                  | SBe  |           | 07.05.12        |          |  |  |   |         |  |          |            |                                       |  |
| Tested                 |      |           |                 |          |  |  |   |         |  |          |            |                                       |  |
| Approved               |      |           |                 |          |  |  |   |         |  |          |            |                                       |  |
| Production             |      |           |                 |          |  |  |   |         |  |          |            |                                       |  |
| Quality                |      |           |                 | Material |  |  | Drawing   |         |  |          |            | DIN A1                                |  |
|                        |      |           |                 |          |  |  |   |         |  |          |            |                                       |  |
|                        |      |           |                 |          |  |  |   |         |  |          |            |                                       |  |
|                        |      |           |                 | Weight   |  |  | Scale 1:1   |         |  | Page 1/1 |            |                                       |  |



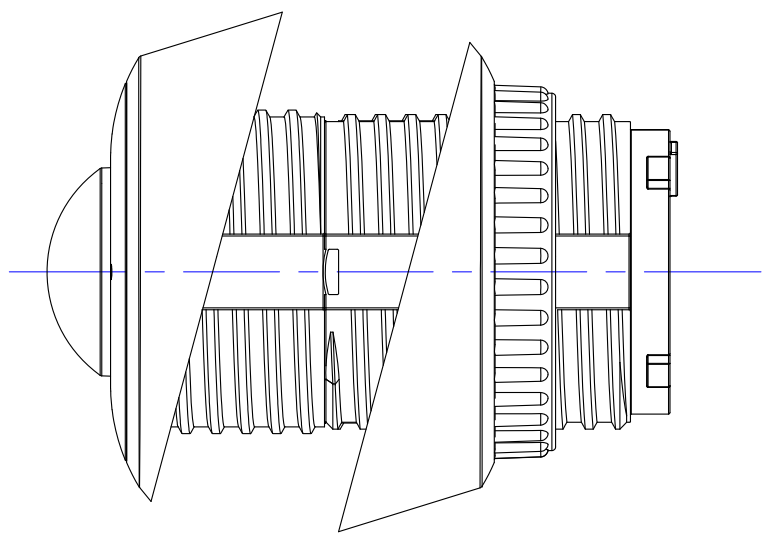
Bottom



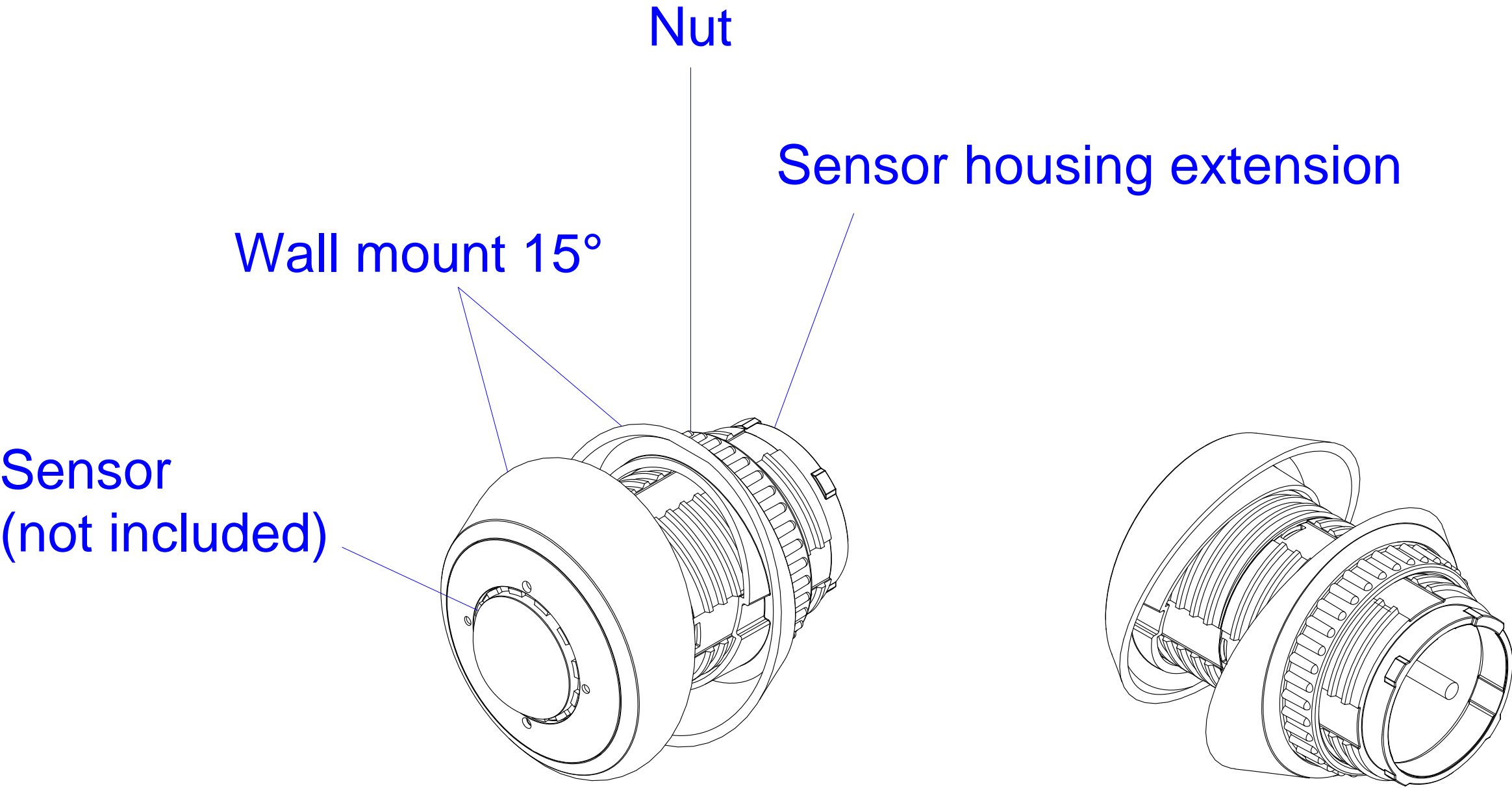
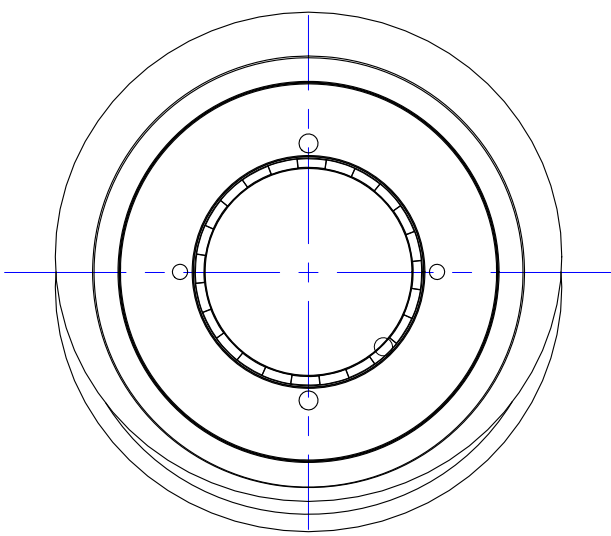
Bottom



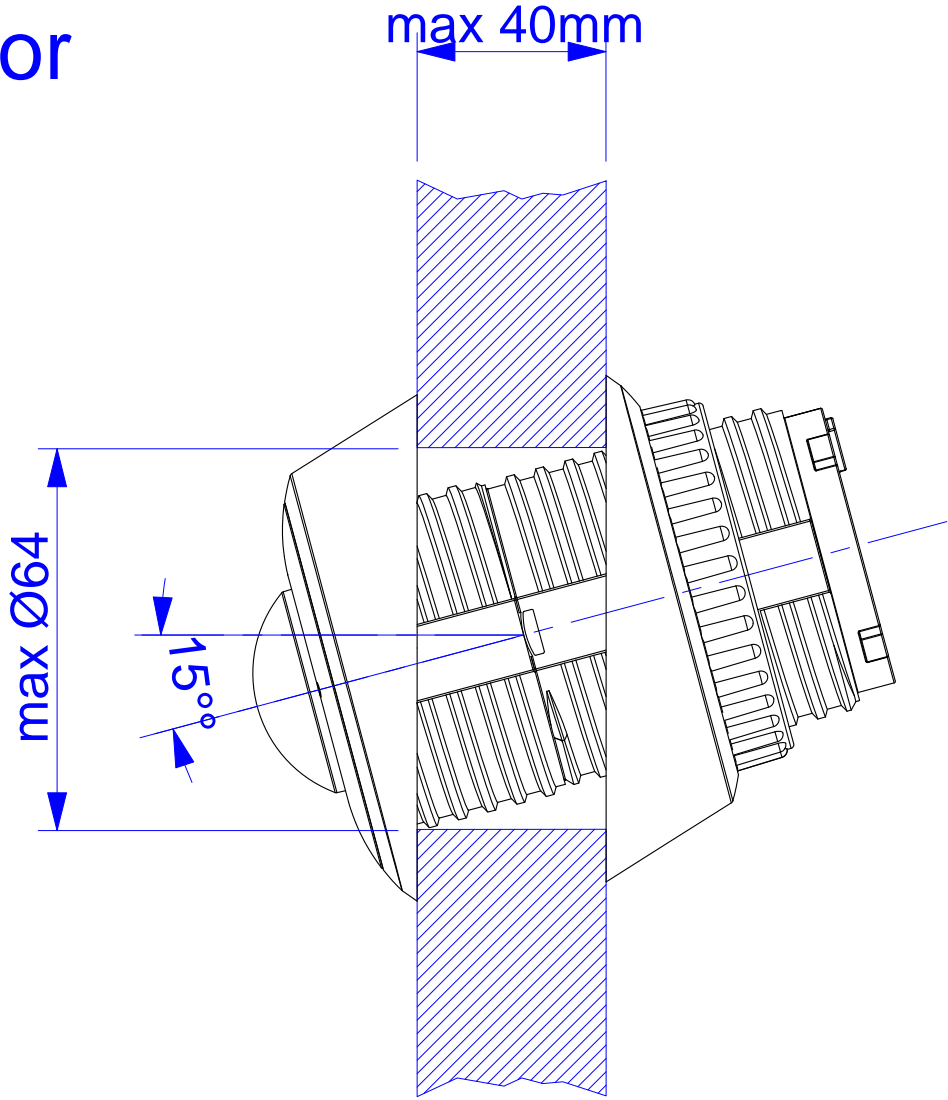
Side



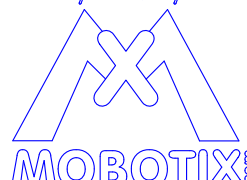
Front



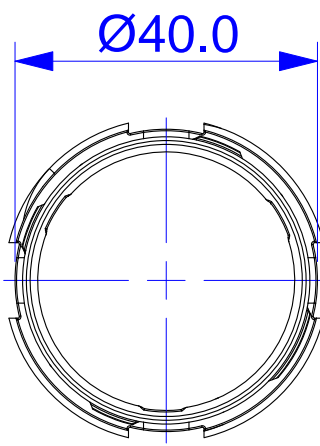
Example with L12 Sensor



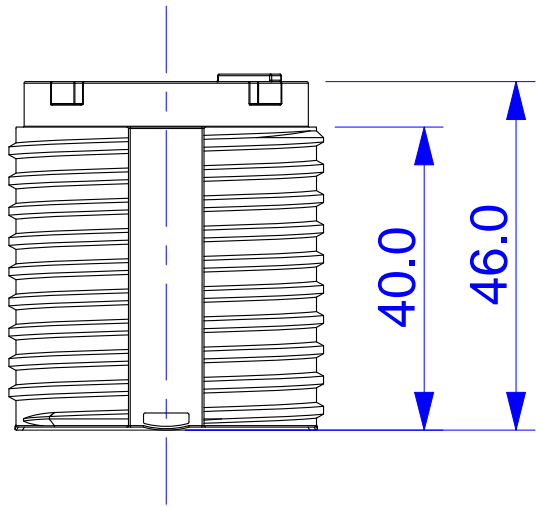
For internal use only. Technical specifications subject to change without notice. MOBOTIX does not assume responsibility for mistakes and recommends to verify measures and mechanical design with an actual product of the chosen MOBOTIX hardware. The reproduction, distribution and utilization of this document as well as the communication of its contents to others without express authorization is prohibited. Offenders will be held liable for the payment of damages. All rights reserved in the event of the grant of a patent, Utility model, design or trademark. No rights are transferred herewith.

|                        |      |           |                 |  |  |   |   |  |  |            |  |  |
|------------------------|------|-----------|-----------------|--|--|---|---|--|--|------------|--|--|
| All measures are in mm |      |           | Surface quality |  |  | <div><div>Security-Vision-Systems</div><div></div></div> | Company   |  |  | MOBOTIX AG |  |  |
|                        | Name | Signature | Date            |  |  |   | Product<br><br><br><br><br><br><br><br><br><br><br><br><br><br><br><br><br><br><br><br><br><br><br><br><br><br><br><br><br><br><br><br><br><br><br><br><br><br><br><br><br><br><br><br><br><br><br><br><br><br><br><br><br><br><br><br><br><br><br><br><br><br><br><br><br><br><br><br><br><br><br><br><br><br><br><br><br><br><br><br><br><br><br><br><br><br><br><br><br><br><br><br><br><br><br><br><br><br><br><br><br><br><br><br><br><br><br><br><br><br><br><br><br><br><br><br><br><br><br><br><br><br><br><br><br><br><br><br><br><br><br><br><br><br><br><br><br><br><br><br><br><br><br><br><br><br><br><br><br><br><br><br><br><br><br><br><br><br><br><br><br><br><br><br><br><br><br><br><br><br><br><br><br><br><br><br><br><br><br><br><br><br><br><br><br><br><br><br><br><br><br><br><br><br><br><br><br><br><br><br><br><br><br><br><br><br><br><br><br><br><br><br><br><br><br><br><br><br><br><br><br><br><br><br><br><br><br><br><br><br><br><br><br><br><br><br><br><br><br><br><br><br><br><br><br><br><br><br><br><br><br><br><br><br><br><br><br><br><br><br><br><br><br><br><br><br><br><br><br><br><br><br><br><br><br><br><br><br><br><br><br><br><br><br><br><br><br><br><br><br><br><br><br><br><br><br><br><br><br><br><br><br><br><br><br><br><br><br><br><br><br><br><br><br><br><br><br><br><br><br><br><br><br><br><br><br><br><br><br><br><br><br><br><br><br><br><br><br><br><br><br><br><br><br><br><br><br><br><br><br><br><br><br><br><br><br><br><br><br><br><br><br><br><br><br><br><br><br><br><br><br><br><br><br><br><br><br><br><br><br><br><br><br><br><br><br><br><br><br><br><br><br><br><br><br><br><br><br><br><br><br><br><br><br><br><br><br><br><br><br><br><br><br><br><br><br><br><br><br><br><br><br><br><br><br><br><br><br><br><br><br><br><br><br><br><br><br><br><br><br><br><br><br><br><br><br><br><br><br><br><br><br><br><br><br><br><br><br><br><br><br><br><br><br><br><br><br><br><br><br><br><br><br><br><br><br><br><br><br><br><br><br><br><br><br><br><br><br><br><br><br><br><br><br><br><br><br><br><br><br><br><br><br><br><br><br><br><br><br><br><br><br><br><br><br><br><br><br><br><br><br><br><br><br><br><br><br><br><br><br><br><br><br><br><br><br><br><br><br><br><br><br><br><br><br><br><br><br><br><br><br><br><br><br><br><br><br><br><br><br><br><br><br><br><br><br><br><br><br><br><br><br><br><br><br><br><br><br><br><br><br><br><br><br><br><br><br><br><br><br><br><br><br><br><br><br><br><br><br><br><br><br><br><br><br><br><br><br><br><br><br><br><br><br><br><br><br><br><br><br><br><br><br><br><br><br><br><br><br><br><br><br><br><br><br><br><br><br><br><br><br><br><br><br><br><br><br><br><br><br><br><br><br><br><br><br><br><br><br><br><br><br><br><br><br><br><br><br><br><br><br><br><br><br><br><br><br><br><br><br><br><br><br><br><br><br><br><br><br><br><br><br><br><br><br><br><br><br><br><br><br><br><br><br><br><br><br><br><br><br><br><br><br><br><br><br><br><br><br><br><br><br><br><br><br><br><br><br><br><br><br><br><br><br><br><br><br><br><br><br><br><br><br><br><br><br><br><br><br><br><br><br><br><br><br><br><br><br><br><br><br><br><br><br><br><br><br><br><br><br><br><br><br><br><br><br><br><br><br><br><br><br><br><br><br><br><br><br><br><br><br><br><br><br><br><br><br><br><br><br><br><br><br><br><br><br><br><br><br><br><br><br><br><br><br><br><br><br><br><br><br><br><br><br><br><br><br><br><br><br><br><br><br><br><br><br><br><br><br><br><br><br><br><br><br><br><br><br><br><br><br><br><br><br><br><br><br><br><br><br><br><br><br><br><br><br><br><br><br><br><br><br><br><br><br><br><br><br><br><br><br><br><br><br><br><br><br><br><br><br><br><br><br><br><br><br><br><br><br><br><br><br><br><br><br><br><br><br><br><br><br><br><br><br><br><br><br><br><br><br><br><br><br><br><br><br><br><br><br><br><br><br><br><br><br><br><br><br><br><br><br><br><br><br><br><br><br><br><br><br><br><br><br><br><br><br><br><br><br><br><br><br><br><br><br><br><br><br><br><br><br><br><br><br><br><br><br><br><br><br><br><br><br><br><br><br><br><br><br><br><br><br><br><br><br><br><br><br><br><br><br><br><br><br><br><br><br><br><br><br><br><br><br><br><br><br><br><br><br><br><br><br><br><br><br><br><br><br><br><br><br><br><br><br><br><br><br><br><br><br><br><br><br><br><br><br><br><br><br><br><br><br><br><br><br><br><br><br><br><br><br><br><br><br><br><br><br><br><br><br><br><br><br><br><br><br><br><br><br><br><br><br><br><br><br><br><br><br><br><br><br><br><br><br><br><br><br><br><br><br><br><br><br><br><br><br><br><br><br><br><br><br><br><br><br><br><br><br><br><br><br><br><br><br><br><br><br><br><br><br><br><br><br><br><br><br><br><br><br><br><br><br><br><br><br><br><br><br><br><br><br><br><br><br><br><br><br><br><br><br><br><br><br><br><br><br><br><br><br><br><br><br><br><br><br><br><br><br><br><br><br><br><br><br><br><br><br><br><br><br><br><br><br><br><br><br><br><br><br><br><br><br><br><br><br><br><br><br><br><br><br><br><br><br><br><br><br><br><br><br><br><br><br><br><br><br><br><br><br><br><br><br><br><br><br><br><br><br><br><br><br><br><br><br><br><br><br><br><br><br><br><br><br><br><br><br><br><br><br><br><br><br><br><br><br><br><br><br><br><br><br><br><br><br><br><br><br><br><br><br><br><br><br><br><br><br><br><br><br><br><br><br><br><br><br><br><br><br><br><br><br><br><br><br><br><br><br><br><br><br><br><br><br><br><br><br><br><br><br><br><br><br><br><br><br><br><br><br><br><br><br><br><br><br><br><br><br><br><br><br><br><br><br><br><br><br><br><br><br><br><br><br><br><br><br><br><br><br><br><br><br><br><br><br><br><br><br><br><br><br><br><br><br><br><br><br><br><br><br><br><br><br><br><br><br><br><br><br><br><br><br><br><br><br><br><br><br><br><br><br><br><br><br><br><br><br><br><br><br><br><br><br><br><br><br><br><br><br><br><br><br><br><br><br><br><br><br><br><br><br><br><br><br><br><br><br><br><br><br><br><br><br><br><br><br><br><br><br><br><br><br><br><br><br><br><br><br><br><br><br><br><br><br><br><br><br><br><br><br><br><br><br><br><br><br><br><br><br><br><br><br><br><br><br><br><br><br><br><br><br><br><br><br><br><br><br><br><br><br><br><br><br><br><br><br><br><br><br><br><br><br><br><br><br><br><br><br><br><br><br><br><br><br><br><br><br><br><br><br><br><br><br><br><br><br><br><br><br><br><br><br><br><br><br><br><br><br><br><br><br><br><br><br><br><br><br><br><br><br><br><br><br><br><br><br><br><br><br><br><br><br><br><br><br><br><br><br><br><br><br><br><br><br><br><br><br><br><br><br><br><br><br><br><br><br><br><br><br><br><br><br><br><br><br><br><br><br><br><br><br><br><br><br><br><br><br><br><br><br><br><br><br><br><br><br><br><br><br><br><br><br><br><br><br><br><br><br><br><br><br><br><br><br><br><br><br><br><br><br><br><br><br><br><br><br><br><br><br><br><br><br><br><br><br><br><br><br><br><br><br><br><br><br><br><br><br><br><br><br><br><br><br><br><br><br><br><br><br><br><br><br><br><br><br><br><br><br><br><br><br><br><br><br><br><br><br><br><br><br><br><br><br><br><br><br><br><br><br><br><br><br><br><br><br><br><br><br><br><br><br><br><br><br><br><br><br><br><br><br><br><br><br><br><br><br><br><br><br><br><br><br><br><br><br><br><br><br><br><br><br><br><br><br><br><br><br><br><br><br><br><br><br><br><br><br><br><br><br><br><br><br><br><br><br><br><br><br><br><br><br><br><br><br><br><br><br><br><br><br><br><br><br><br><br><br><br><br><br><br><br><br><br><br><br><br><br><br><br><br><br><br><br><br><br><br><br><br><br><br><br><br><br><br><br><br><br><br><br><br><br><br><br><br><br><br><br><br><br><br><br><br><br><br><br><br><br><br><br><br><br><br><br><br><br><br><br><br><br><br><br><br><br><br><br><br><br><br><br><br><br><br><br><br><br><br><br><br><br><br><br><br><br><br><br><br><br><br><br><br><br><br><br><br><br><br><br><br><br><br><br><br><br><br><br><br><br><br><br><br><br><br><br><br><br><br><br><br><br><br><br><br><br><br><br><br><br><br><br><br><br><br><br><br><br><br><br><br><br><br><br><br><br><br><br><br><br><br><br><br><br><br><br><br><br><br><br><br><br><br><br><br><br><br><br><br><br><br><br><br><br><br><br><br><br><br><br><br><br><br><br><br><br><br><br><br><br><br><br><br><br><br><br><br><br><br><br><br><br><br><br><br><br><br><br><br><br><br><br><br><br><br><br><br><br><br><br><br><br><br><br><br><br><br><br><br><br><br><br><br><br><br><br><br><br><br><br><br><br><br><br><br><br><br><br><br><br><br><br><br><br><br><br><br><br><br><br><br><br><br><br><br><br><br><br><br><br><br><br><br><br><br><br><br><br><br><br><br><br><br><br><br><br><br><br><br><br><br><br><br><br><br><br><br><br><br><br><br><br><br><br><br><br><br><br><br><br><br><br><br><br><br><br><br><br><br><br><br><br><br><br><br><br><br><br><br><br><br><br><br><br><br><br><br><br><br><br><br><br><br><br><br><br><br><br><br><br><br><br><br><br><br><br><br><br><br><br><br><br><br><br><br><br><br><br><br><br><br><br><br><br><br><br><br><br><br><br><br><br><br><br><br><br><br><br><br><br><br><br><br><br><br><br><br><br><br><br><br><br><br><br><br><br><br><br><br><br><br><br><br><br><br><br><br><br><br><br><br><br><br><br><br><br><br><br><br><br><br><br><br><br><br><br><br><br><br><br><br><br><br><br><br><br><br><br><br><br><br><br><br><br><br><br><br><br><br><br><br><br><br><br><br><br><br><br><br><br><br><br><br><br><br><br><br><br><br><br><br><br><br><br><br><br><br><br><br><br><br><br><br><br><br><br><br><br><br><br><br><br><br><br><br><br><br><br><br><br><br><br><br><br><br><br><br><br><br><br><br><br><br><br><br><br><br><br><br><br><br><br><br><br><br><br><br><br><br><br><br><br><br><br><br><br><br><br><br><br><br><br><br><br><br><br><br><br><br><br><br><br><br><br><br><br><br><br><br><br><br><br><br><br><br><br><br><br><br><br><br><br><br><br><br><br><br><br><br><br><br><br><br><br><br><br><br><br><br><br><br><br><br><br><br> |  |  |            |  |  |

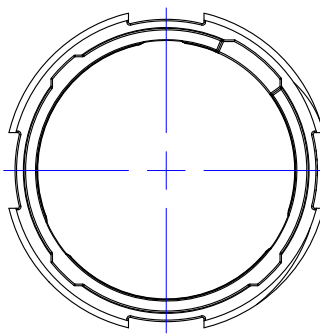
Front



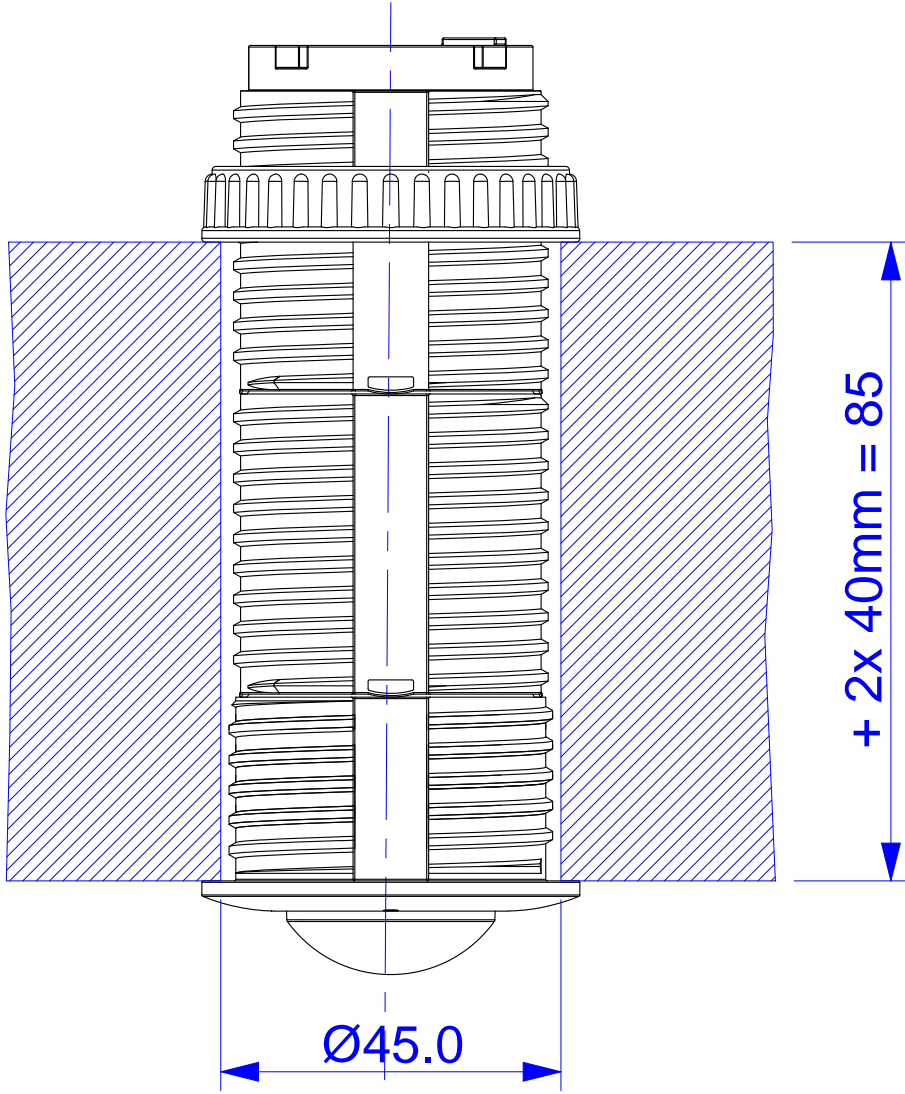
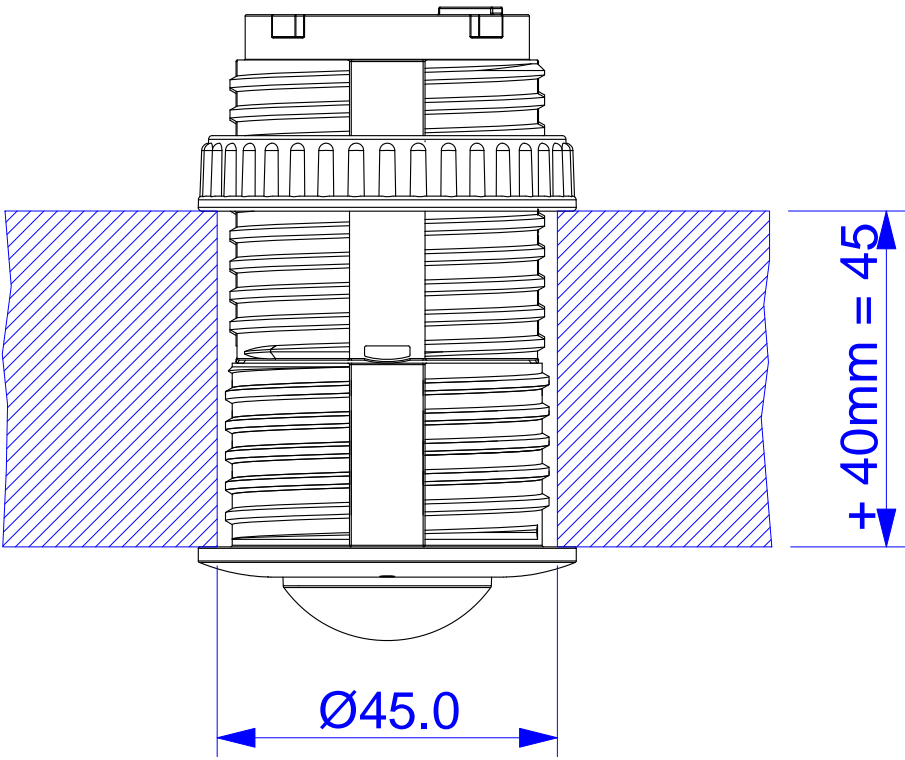
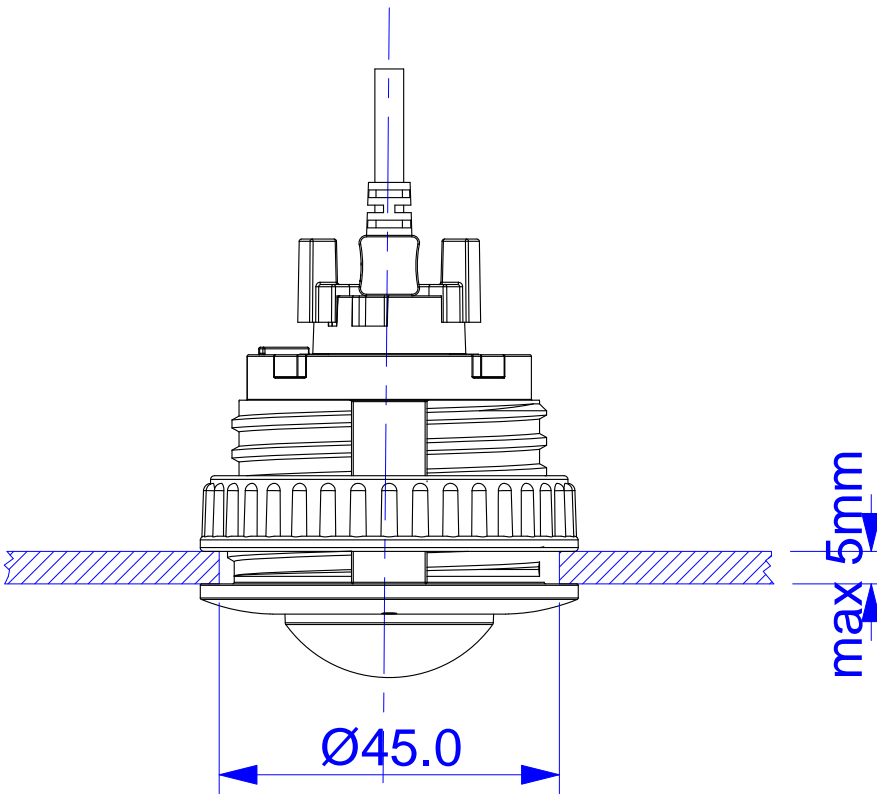
Side



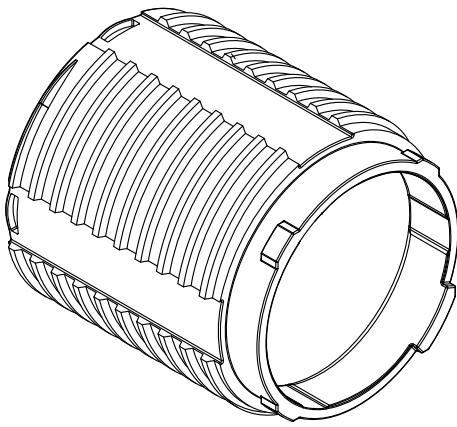
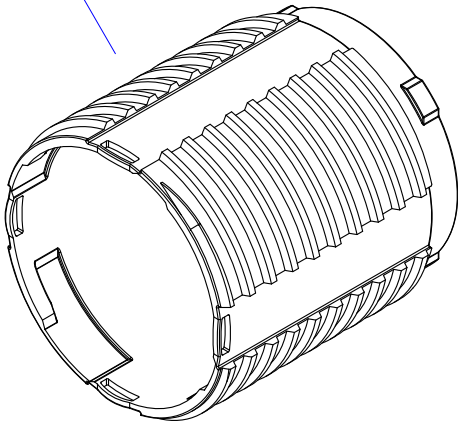
Bottom



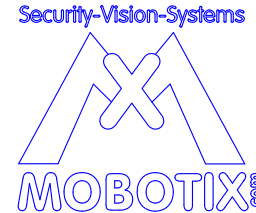
Example with L12 Sensor, ceiling mount.  
Each extension gives you 40mm more space.  
You can use more than one on every sensor.



Housing extension  
for all sensors

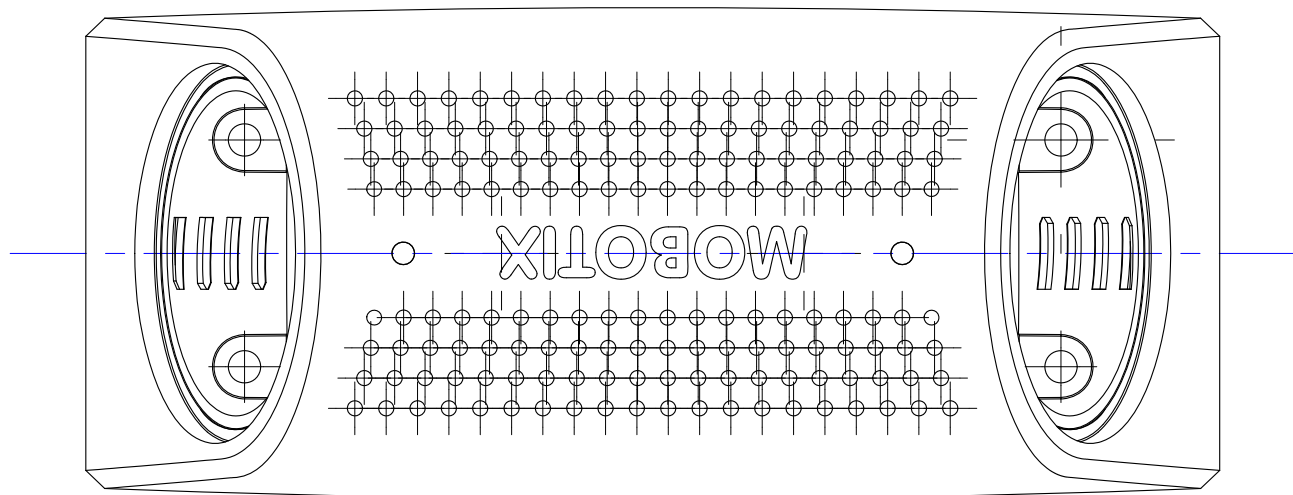


For internal use only. Technical specifications subject to change without notice. MOBOTIX does not assume responsibility for mistakes and recommends to verify measures and mechanical design with an actual product of the chosen MOBOTIX hardware. The reproduction, distribution and utilization of this document as well as the communication of its contents to others without express authorization is prohibited. Offenders will be held liable for the payment of damages. All rights reserved in the event of the grant of a patent, Utility model, design or trademark. No rights are transferred herewith.

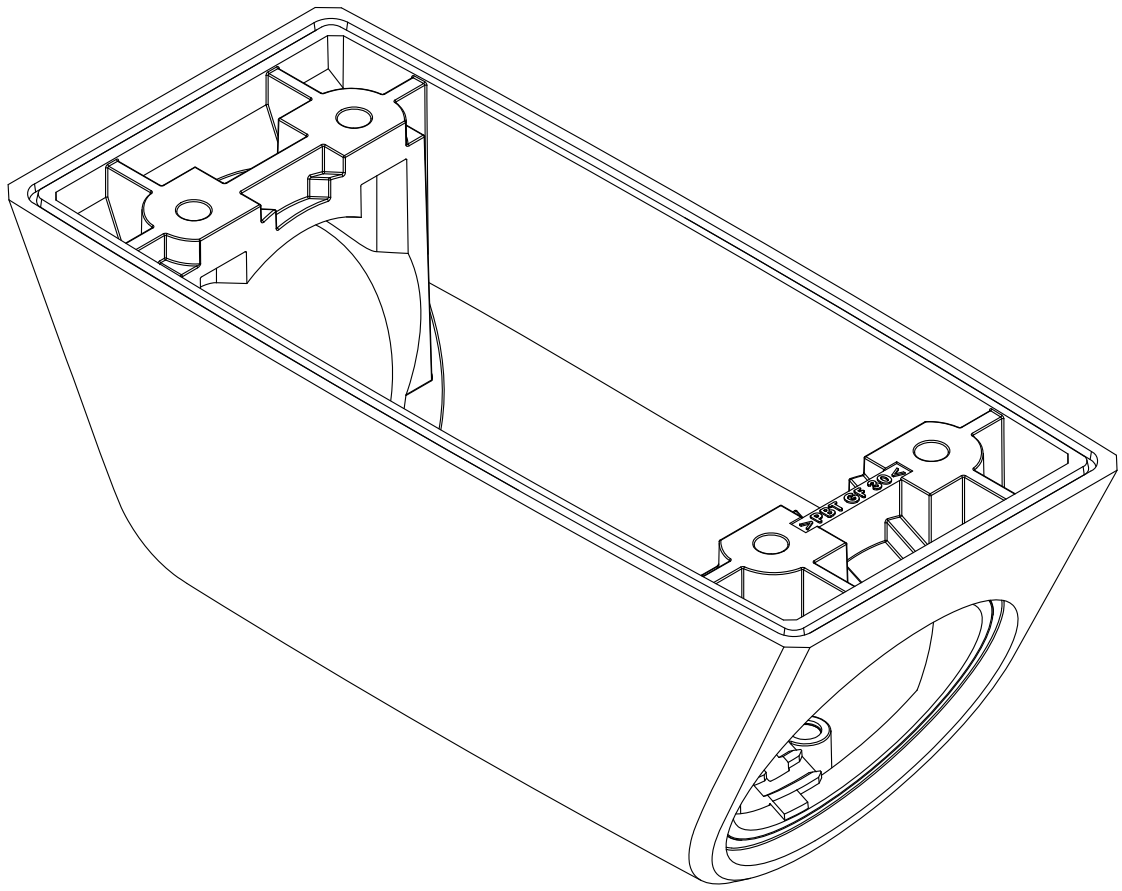
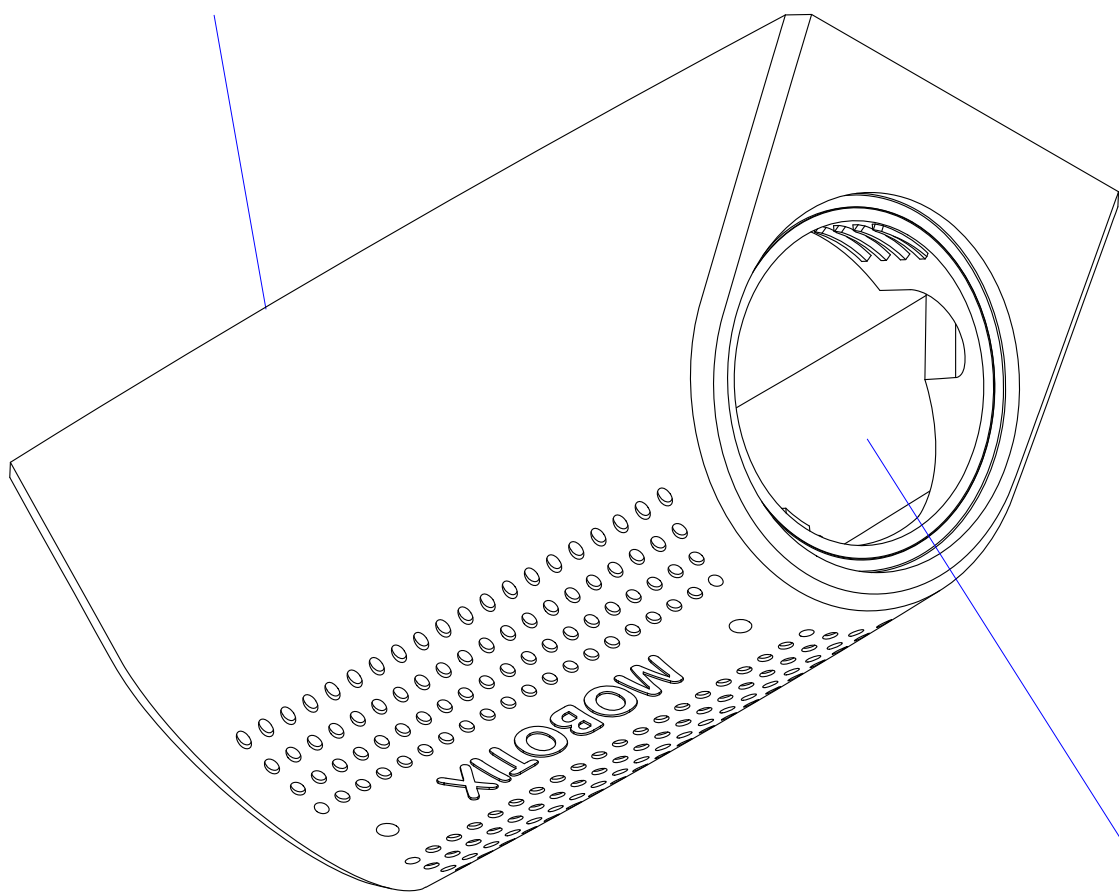
|                        |      |           |                 |          |  |   |                                  |  |          |
|------------------------|------|-----------|-----------------|----------|--|---|----------------------------------|--|----------|
| All measures are in mm |      |           | Surface quality |          |  |  | Company<br><br><b>MOBOTIX AG</b> |  |          |
|                        | Name | Signature | Date            |          |  |   | Product                          |  |          |
| Drawn                  | SBe  |           | 07.05.12        |          |  |   | <b>Sensor Housing Extension</b>  |  |          |
| Tested                 |      |           |                 |          |  |   |                                  |  |          |
| Approved               |      |           |                 |          |  |   |                                  |  |          |
| Production             |      |           |                 |          |  |   |                                  |  |          |
| Quality                |      |           |                 | Material |  |   | Drawing                          |  | DIN A1   |
|                        |      |           |                 |          |  |   |                                  |  |          |
|                        |      |           |                 |          |  |   |                                  |  |          |
|                        |      |           |                 | Weight   |  |   | Scale 1:1                        |  | Page 1/1 |



Bottom

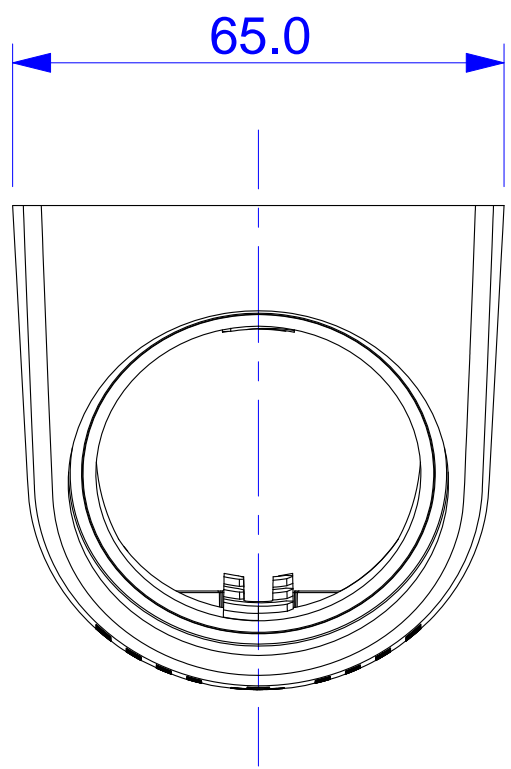


SurroundMount

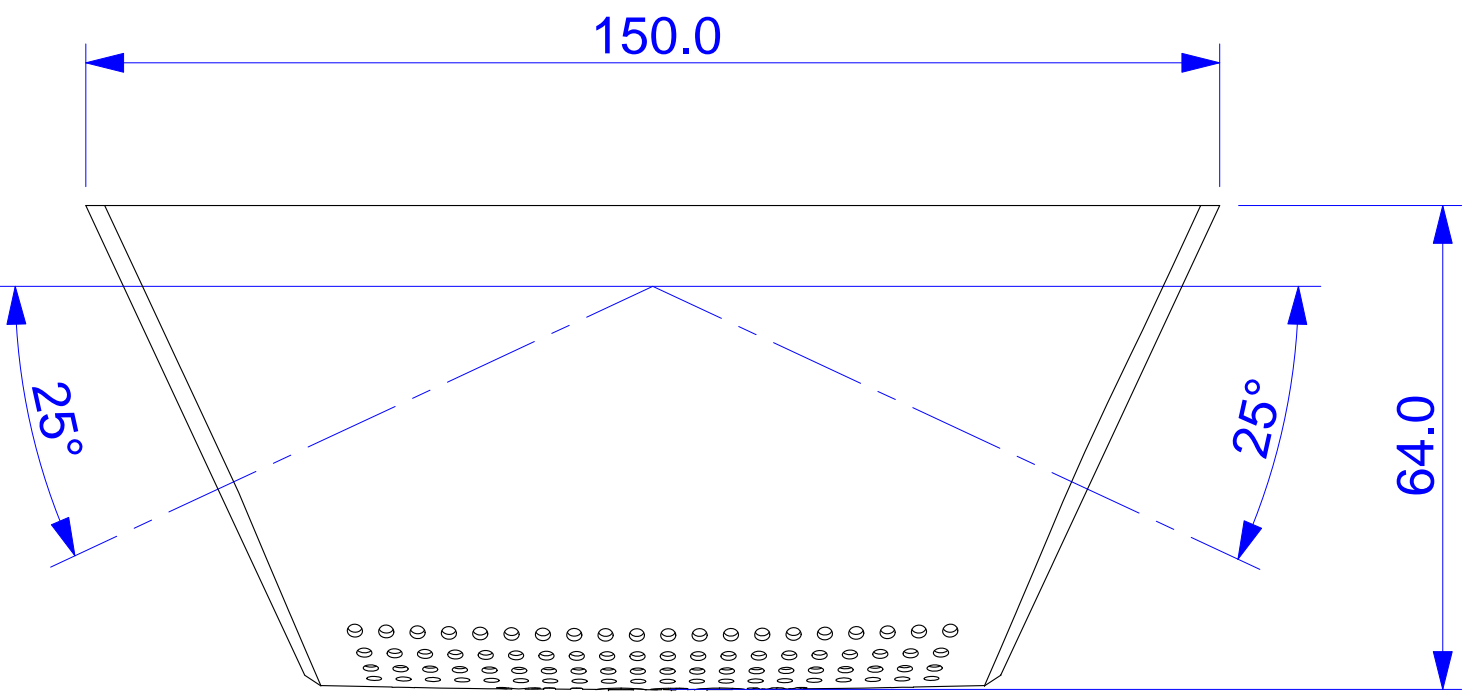


Space for S14 Sensor Module

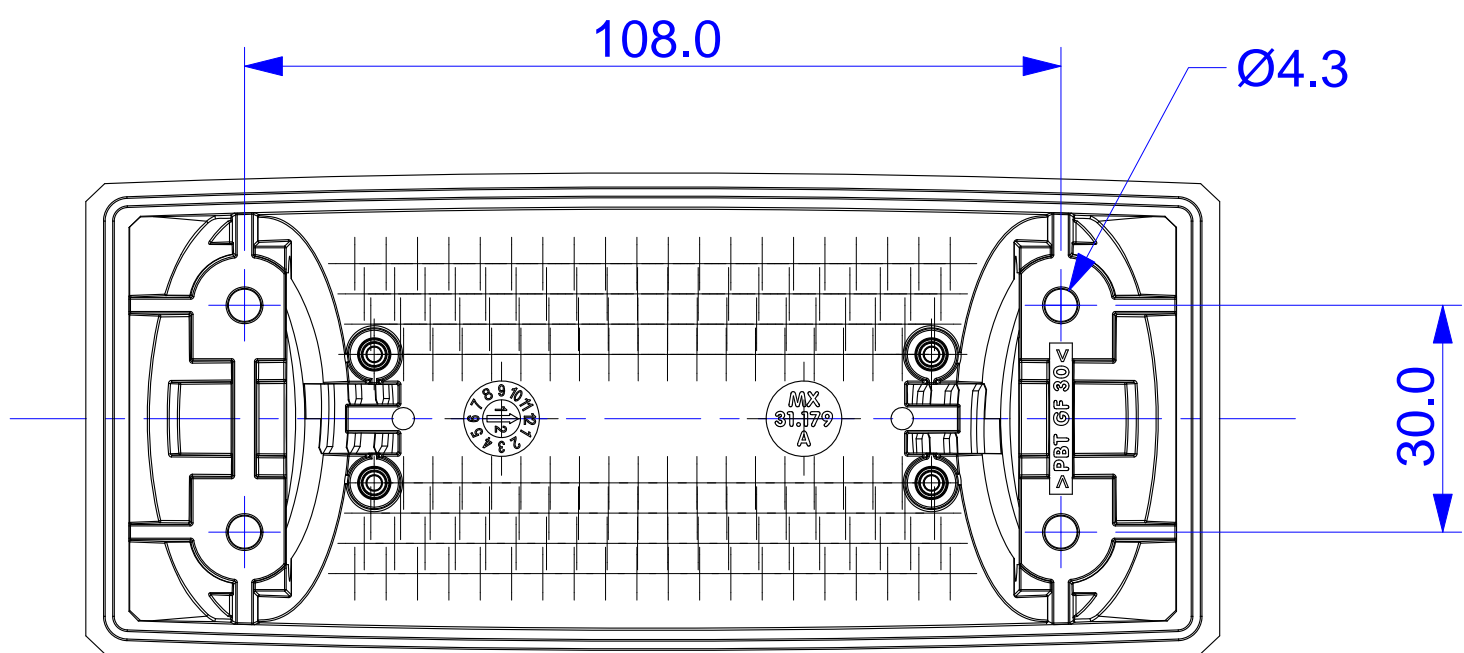
Front



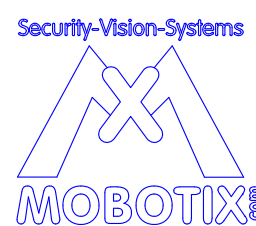
Side



Top

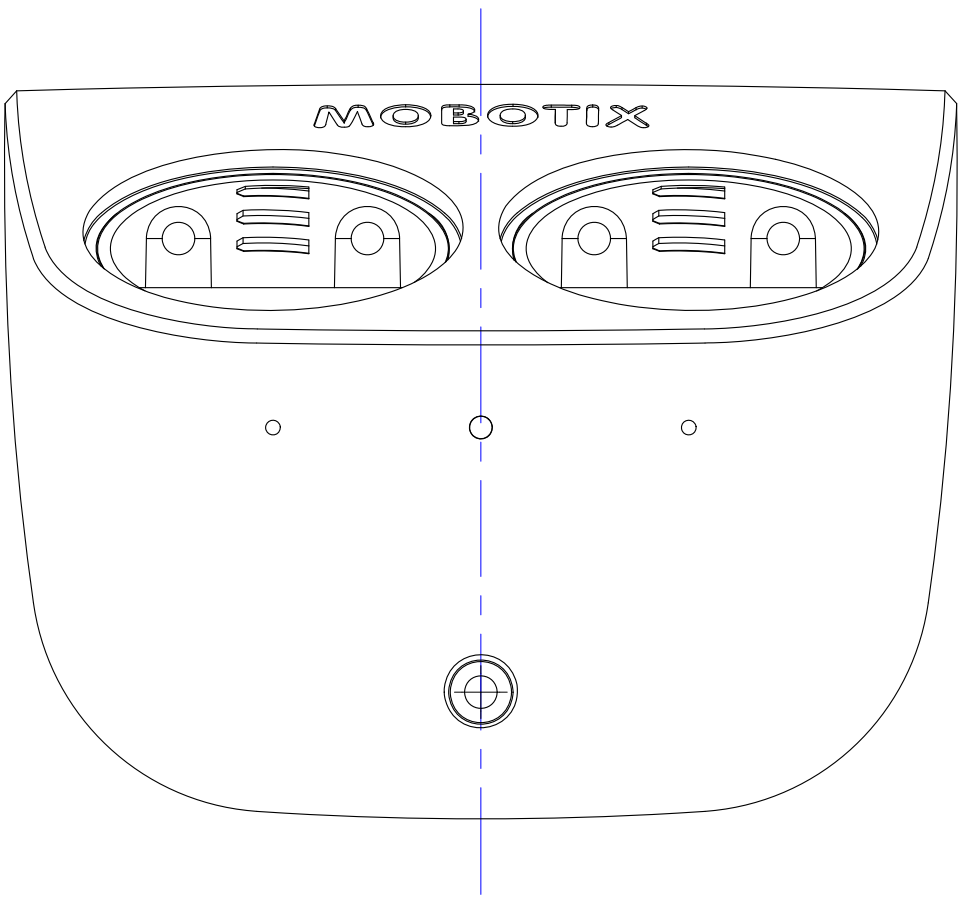


For internal use only. Technical specifications subject to change without notice. MOBOTIX does not assume responsibility for mistakes and recommends to verify measures and mechanical design with an actual product of the chosen MOBOTIX hardware. The reproduction, distribution and utilization of this document as well as the communication of its contents to others without express authorization is prohibited. Offenders will be held liable for the payment of damages. All rights reserved in the event of the grant of a patent, Utility model, design or trademark. No rights are transferred herewith.

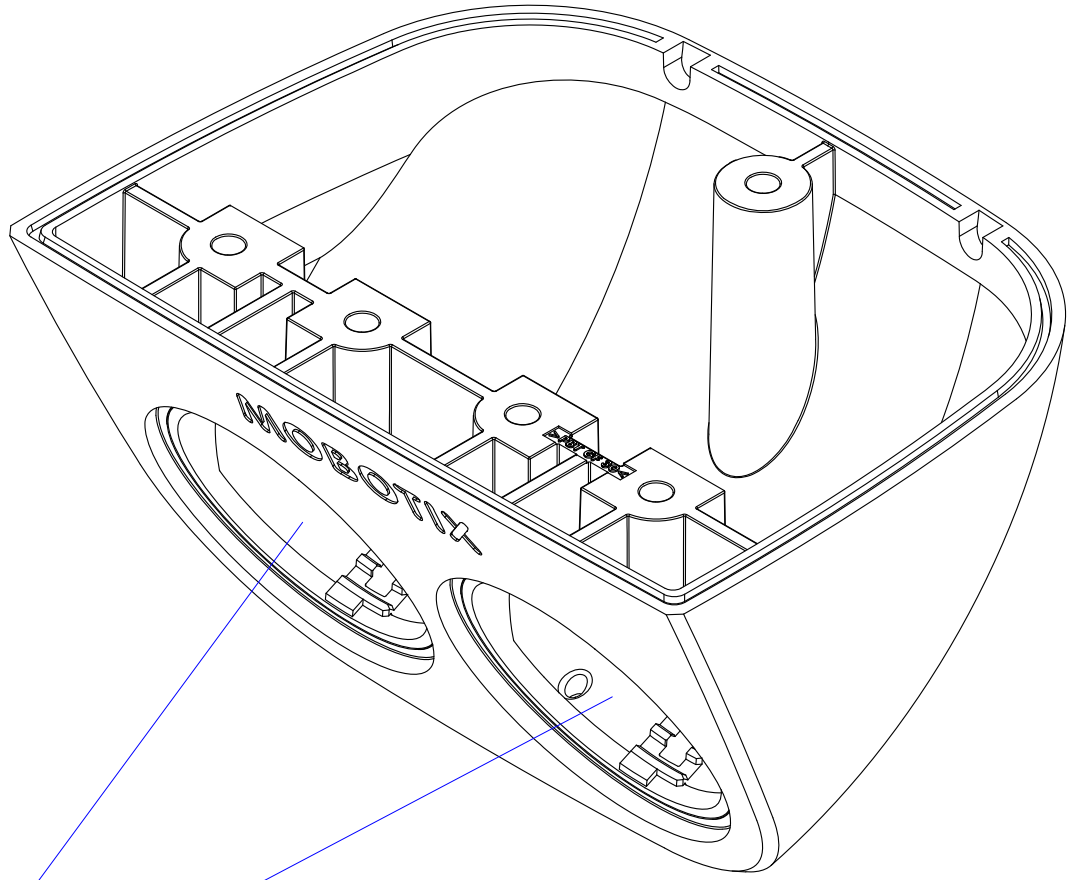
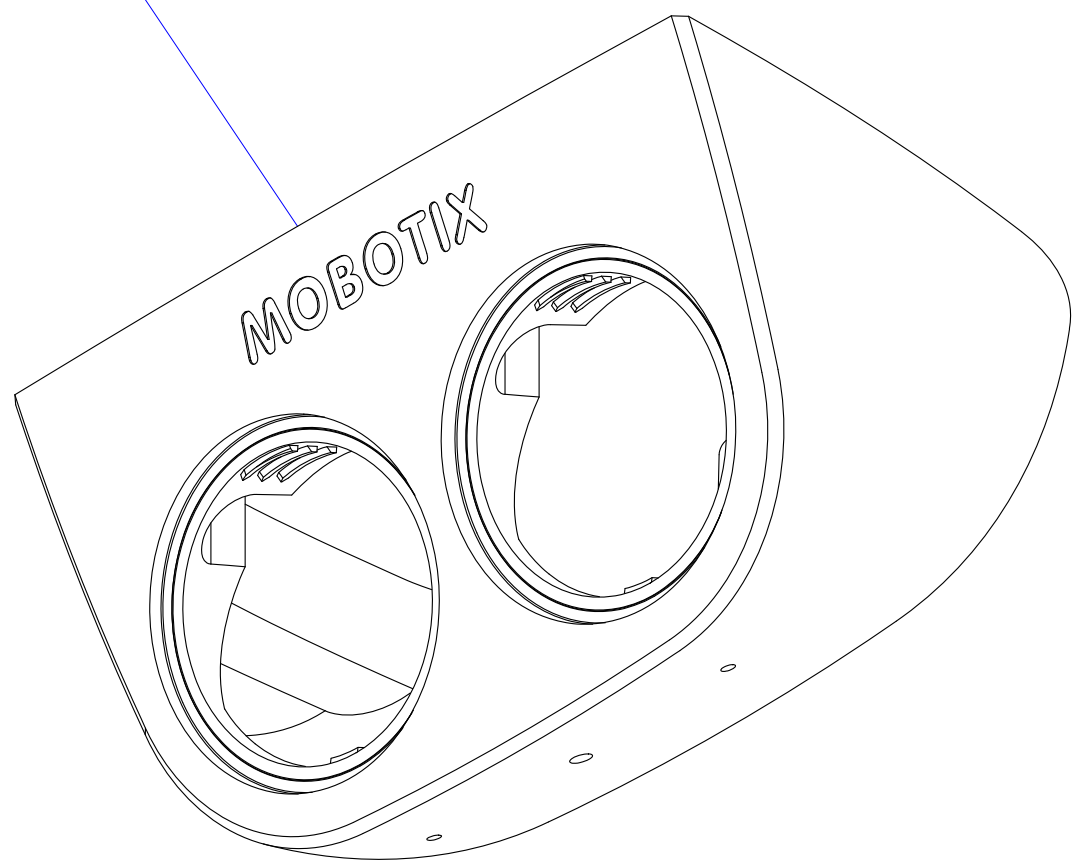
|                        |      |           |                 |          |  |   |                                     |  |          |
|------------------------|------|-----------|-----------------|----------|--|---|-------------------------------------|--|----------|
| All measures are in mm |      |           | Surface quality |          |  |  | Company<br><br><b>MOBOTIX AG</b>    |  |          |
|                        | Name | Signature | Date            |          |  |   | Product<br><br><b>SurroundMount</b> |  |          |
| Drawn                  | SBe  |           | 07.05.12        |          |  |   |                                     |  |          |
| Tested                 |      |           |                 |          |  |   |                                     |  |          |
| Approved               |      |           |                 |          |  |   |                                     |  |          |
| Production             |      |           |                 |          |  |   |                                     |  |          |
| Quality                |      |           |                 | Material |  |   | Drawing                             |  | DIN A1   |
|                        |      |           |                 |          |  |   |                                     |  |          |
|                        |      |           |                 |          |  |   |                                     |  |          |
|                        |      |           |                 | Weight   |  |   | Scale 1:1                           |  | Page 1/1 |



Bottom

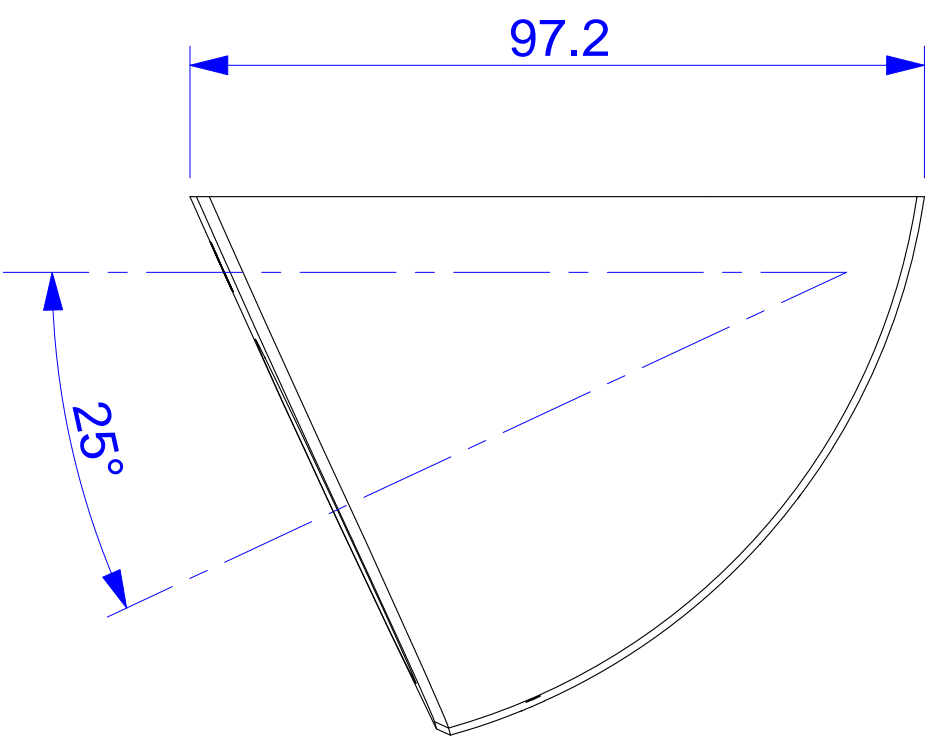


DualMount

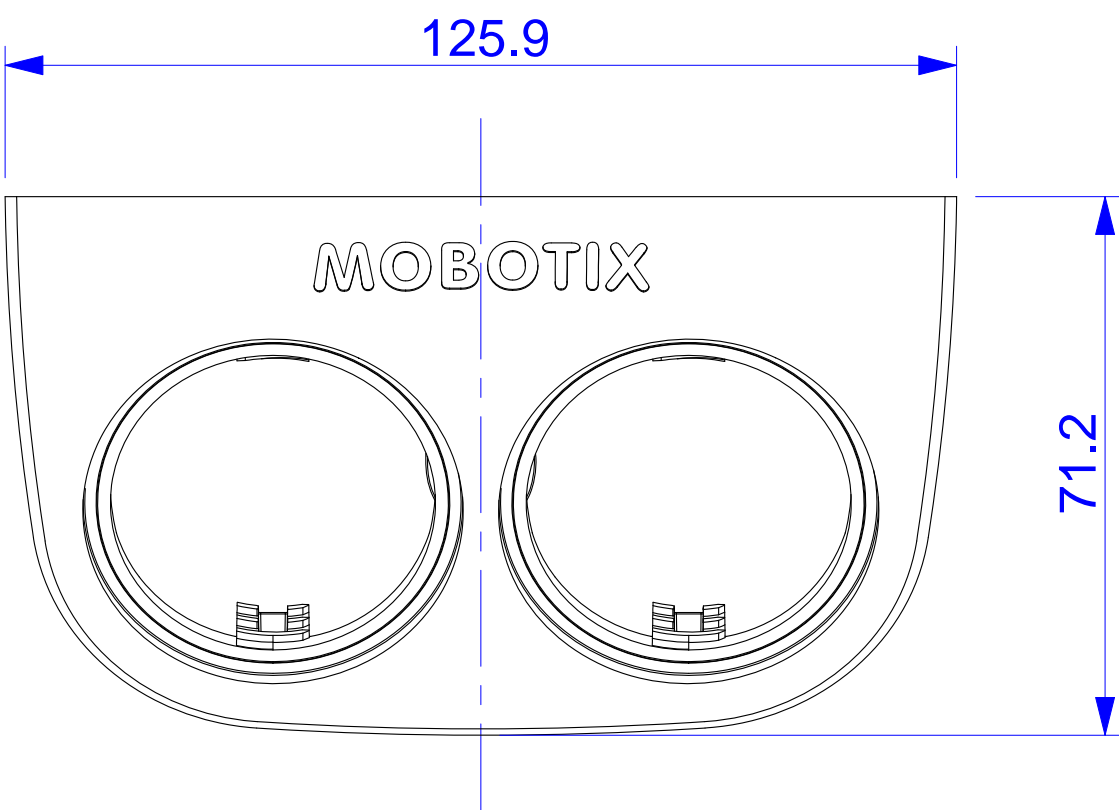


Space for S14 Sensor Modules

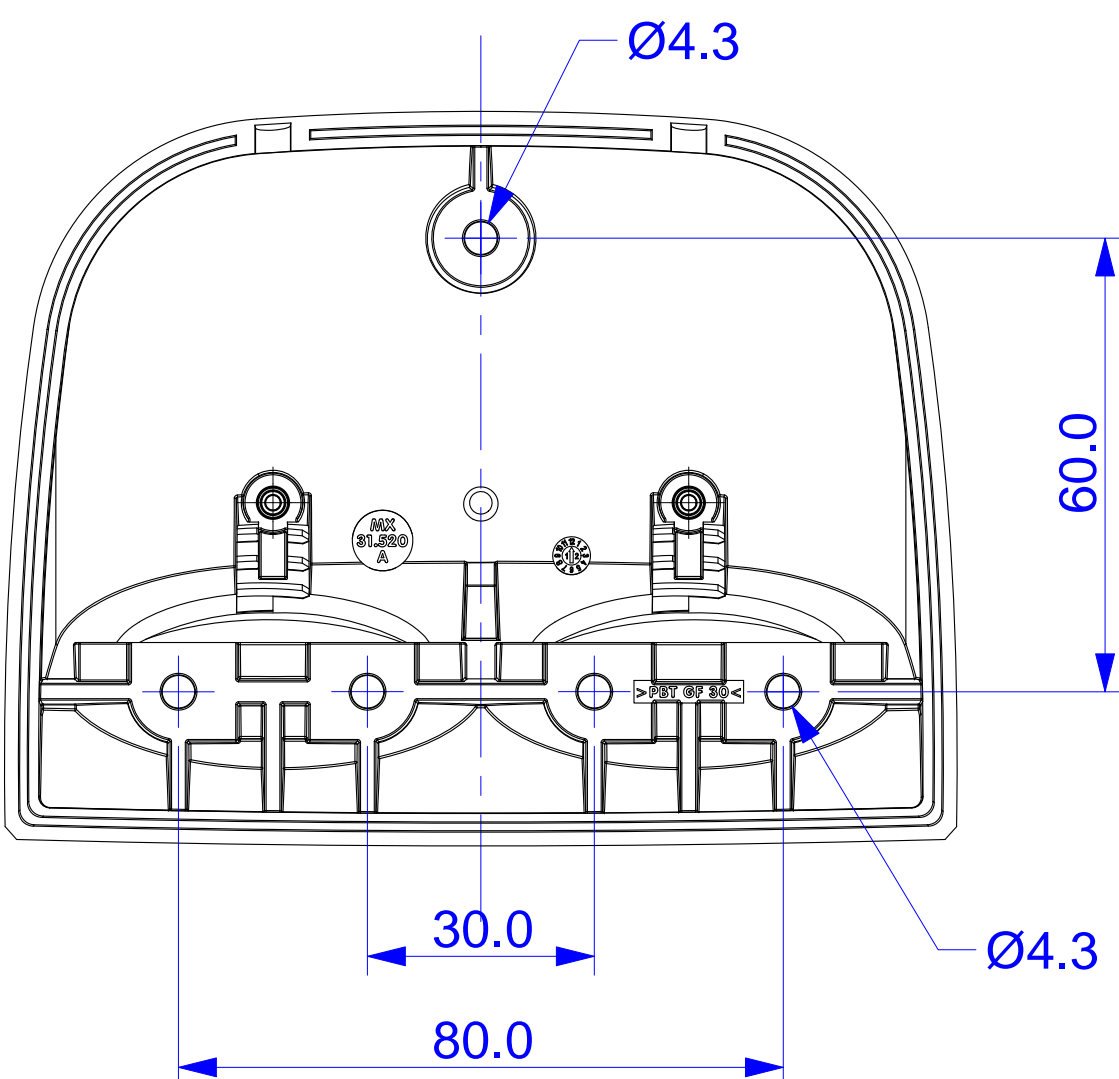
Front



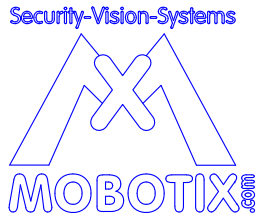
Side



Top



For internal use only. Technical specifications subject to change without notice. MOBOTIX does not assume responsibility for mistakes and recommends to verify measures and mechanical design with an actual product of the chosen MOBOTIX hardware. The reproduction, distribution and utilization of this document as well as the communication of its contents to others without express authorization is prohibited. Offenders will be held liable for the payment of damages. All rights reserved in the event of the grant of a patent, Utility model, design or trademark. No rights are transferred herewith.

|                        |      |           |                 |          |  |   |  |           |  |            |           |
|------------------------|------|-----------|-----------------|----------|--|---|--|-----------|--|------------|-----------|
| All measures are in mm |      |           | Surface quality |          |  | <div>Security-Vision-Systems</div> <div></div> |  | Company   |  | MOBOTIX AG |           |
|                        | Name | Signature | Date            |          |  |   |  | Product   |  |            | DualMount |
| Drawn                  | SBe  |           | 07.05.12        |          |  |   |  |           |  |            |           |
| Tested                 |      |           |                 |          |  |   |  |           |  |            |           |
| Approved               |      |           |                 |          |  |   |  |           |  |            |           |
| Production             |      |           |                 |          |  |   |  |           |  |            |           |
| Quality                |      |           |                 | Material |  |   |  | Drawing   |  |            | DIN A1    |
|                        |      |           |                 |          |  |   |  |           |  |            |           |
|                        |      |           |                 | Weight   |  |   |  | Scale 1:1 |  |            | Page 1/1  |