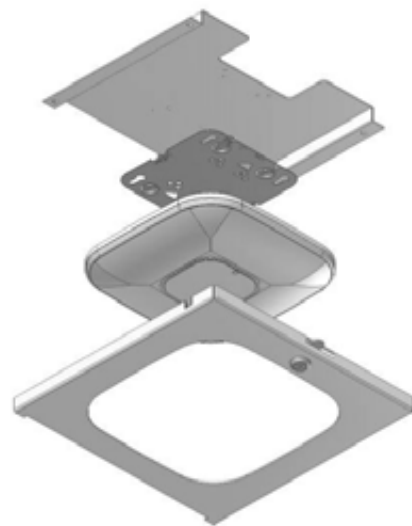


Model 1076-CCOAP

Locking Recess Wall/Ceiling Mount for Cisco APs

The Model 1076-CCOAP wireless LAN access point mounting solution is a locking, recessed wall or ceiling insert designed specifically to secure Cisco wireless access points while satisfying UL criteria for heat and visible smoke release in air-handling spaces. This aesthetic, white powder-coated all steel enclosure has a bracket in the door to which the access point is attached. When the door is closed, the access point is locked in place and the enclosure preserves the UL criteria. Installation requires a square opening to be cut into the wall or ceiling. The 15" square beveled flange conceals the opening in the wall. The enclosure is retained in place by two wall bridges. Interchangeable doors permit migration to different equipment in the future without removing enclosure from the wall.



Model 1076-CCOAP shown with Cisco 3600i wireless access point (not included)

Specifications:

- Recessed wall or ceiling enclosure designed to secure Cisco wireless access points (WAPs)
- AP135 and other wireless components from most vendors. 15" x 15" bezel
- UL Listed and designed to meet NEC300-22 and 300-23 for plenum installations
- Fully hinged locking door, keyed alike
- Shallow back box (3") simplifies installation in walls and ceilings
- Interchangeable doors permit simple migration to new access points and antennas
- Enclosure back box is effective dust barrier to simplify ICRA compliance in hospitals



Specifications

- Back-box is 16 ga. galvanized steel; door and flange are textured, white powder-coated steel. RoHS compliant
- Size: Bezel is 15" x 15", back-box is 12 3/4" x 12 3/4" x 3" deep
- Knockouts for AC receptacle, (2) keystone jacks, (2) 3/4" trade conduit connector
- Maximum weight to be installed inside the unit is 25 lbs.
- De-rate upper operating temperature limit from +50°C to +40°C when AP in the enclosure
- Enclosure must be supported by the tile bridges. When installed in the ceiling, enclosure must be supported by the building structure, independent of the suspended ceiling

Includes

- (1) Unit Per Carton
- (2) Wall Bridge
- (1) Cable Egress Fire Stop Kit (1/2" trade size conduit connector, and fire block foam insert)
- (4) Access Point Mounting Screw
- (1) Access Point Mounting Plate
- (4) 1/2" Standoff
- (4) Hanger Wire
- (2) Key For Lock
- Installation Instructions
- Shipping weight: 13 lbs.

Model 1076 Configurations

Interchangeable doors allow the 107X Series ceiling enclosure to be customized to different vendor's product.

MODEL NUMBER	DESIGNED FOR	DESCRIPTION
1076-CP	Apple TV, other digital gateways, or wireless APs	Clear polycarbonate dome in door passes wireless and IR signal, digital gateway inside
1076-WA	Wireless APs	Opaque White ABS dome in door passes wireless signal, AP inside
1076-CCOAP	Cisco Access Points	Cisco AP is locked into door, fully exposing front of AP
1076-AN-AP135	Aruba Networks AP	Aruba Networks AP-135 is locked into door, exposing front of AP
1076-00	External antennas	External antennas mount on door, AP inside. MUST use Oberon 35-BLKHD-KIT, 34-ZDUAL antennas, or ceiling mount antennas

Accessories

- P/N 35-CBXJ2WH-A surface mount modular receptacle to terminate horizontal cable in the enclosure

Customer Print and Installation Instructions

Visit www.oberonwireless.com