

Whisper-Flex® and Steadi-Flex® Compensating Cables

**LIFETIME
WARRANTY**



Whisper-Flex compensating cable provides smooth and quiet operation at temperatures of -15°C to $+60^{\circ}\text{C}$ and, in the US, can be used for elevators with rated speeds of no greater than 700 ft/min • 3.56 m/sec. It's an inexpensive alternate to wire rope compensating.

Steady-Flex compensating cable is a wide-loop version of our standard Whisper-Flex cable. It provides smooth operation at temperatures of -15°C to $+60^{\circ}\text{C}$ and can be used for elevators with rated speeds up to 3.56 m/sec • 700 ft/min.

Because of its wider natural loop, Steady-Flex cable can be positioned closer to the car's centerline. This improves car balance and ride quality for installations with side counterweights and long hang lengths (over 122 m • 400 ft). Yet it operates as smoothly and quietly as Whisper-Flex.

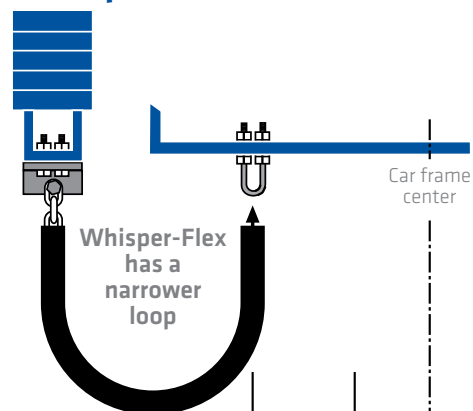
When choosing Steady-Flex, give special consideration to the dynamic loop width. The dynamic loop width is the width of the loop when the cable is in motion and will vary with car speed, distance between support points and other factors. The static loop width will be up to 254 mm • 10 in. smaller. At rest, the cable should touch the damping device inside rollers (see damping devices on the back of this sheet). In motion, the loop will expand.

Steady-Flex is NOT a one-for-one replacement for Whisper-Flex. Pit dimension and possible obstructions should be considered when specifying Steady-Flex. Counterweight and car attachment points should be spaced to match the dynamic loop width.

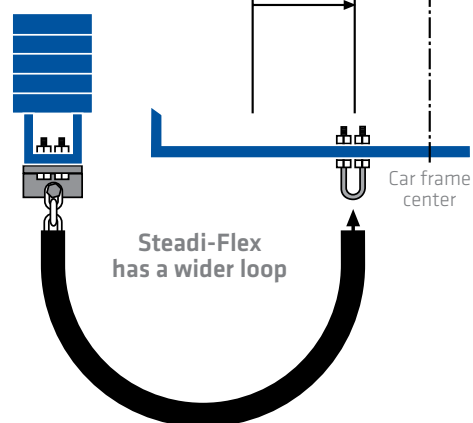
Support brackets, U-bolts, S-hooks, and heavy duty stainless steel grips specifically designed for these cables must be used to ensure safe installations.

Draka Elevator damping devices are recommended to minimize cable sway for car speeds above 1.8 m/sec • 350 ft/min.

Whisper-Flex



Steady-Flex



Whisper-Flex® Compensating Cable - US patent 4,716,989

Part Number	Product Code	Cable Weight lbs/ft • kg/m	Chain Trade Size inches • mm	Cable Nom. OD inches • mm	Max. Hang Length feet • meters	Nom. Loop Width inches • mm
18-075-97	WF 075	0.75 • 1.1	3/16 • 5.5	1.05 • 27	600 • 183	22 • 540
18-010-97	WF 10	1.0 • 1.5	3/16 • 5.5	1.15 • 29	600 • 183	24 • 610
18-015-97	WF 15	1.5 • 2.2	1/4 • 7	1.36 • 35	600 • 183	24 • 610
18-020-97	WF 20	2.0 • 3.0	1/4 • 7	1.50 • 38	520 • 158	26 • 660
18-025-97	WF 25	2.5 • 3.7	5/16 • 8	1.63 • 41	600 • 183	26 • 660
18-030-97	WF 30	3.0 • 4.5	5/16 • 8	1.77 • 45	505 • 154	26 • 660
18-035-97	WF 35	3.5 • 5.2	3/8 • 10	1.91 • 49	600 • 183	27 • 690
18-040-97	WF 40	4.0 • 6.0	3/8 • 10	2.03 • 52	530 • 162	27 • 690

Steady-Flex® Compensating Cable - US patent 7,610,944 • European patent 1721859

Part Number	Product Code	Cable Weight lbs/ft • kg/m	Chain Trade Size inches • mm	Cable Nom. OD inches • mm	Max. Hang Length feet • meters	Dynamic Loop Width inches • mm
18-L15-97	SFC 15	1.5 • 2.2	1/4 • 7	1.39 • 35	600 • 183	46 • 1170
18-L20-97	SFC 20	2.0 • 3.0	1/4 • 7	1.56 • 40	520 • 158	47 • 1200
18-L25-97	SFC 25	2.5 • 3.7	5/16 • 8	1.67 • 42	600 • 183	48 • 1220
18-L30-97	SFC 30	3.0 • 4.5	5/16 • 8	1.82 • 46	505 • 154	49 • 1250
18-L35-97	SFC 35	3.5 • 5.2	3/8 • 10	1.91 • 49	600 • 183	50 • 1270
18-L40-97	SFC 40	4.0 • 6.0	3/8 • 10	2.04 • 52	530 • 162	50 • 1270

Damping Devices for use with Whisper-Flex and Steady-Flex Compensating Cables

When properly installed, damping devices will keep the cable inside its vertical traveling plane. It is critical that the cable travel vertically as it passes through the damping devices.

SwayLess® damping devices (WF-SRD) are used with Whisper-Flex for cab speeds of < 500 ft/min • 2.5 m/sec. Two SwayLess damping devices are normally required for installation and are mounted 3 ft • 1 meter above the base of the loop. SwayLess is NOT recommended for Steady-Flex.

Rail-mounted (SL-RMB-2) and floor-mounting (SL-FMB-48) kits are available.

Super SwayLess® damping devices (WF-RRD3 for Whisper-Flex) are used for cab speeds of 500 to 700 ft/min • 2.5 to 3.56 m/sec. Two Super SwayLess damping devices are normally required for installation and are mounted 3 ft • 1 meter above the base of the loop. Super Swayless for Steady-Flex (WF-RRD3-S) is used to minimize cable sway for car speeds > 350 ft/min • 1.78 m/sec

Rail-mounted (SSL-RMB-2) and floor-mounted (SSL-FMB-48) kits are available.

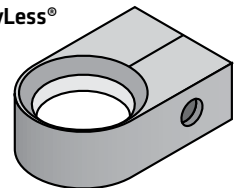
ShallowSwayless® damping devices are used when there is not sufficient pit depth for Swayless or Super Swayless devices. It reduces compensating cable sway and oscillation for cab speeds up to 700 ft/min • 3.56 m/sec. Two sizes are available; the 27 inch version (WFDD-27L) is for Whisper-Flex and the 50 inch version (WFDD-50L) is for Steady-Flex.

The kit includes all components shown, including mounting bolts and washers.

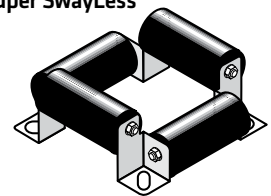
Whisper-Flex and Steady-Flex installation Hardware

Please consult our catalog, Compensating Cable Installation Guide or website (www.drakaelevator.com) for specifics on compensating cable installation hardware. The JCC kits are used for standard Whisper-Flex installations. The JCC-CHN kits are for shallow pit Whisper-Flex installations and Steady-Flex. Using hardware other than Draka's could seriously jeopardize the safety of your installation and will void any warranty.

SwayLess®



Super SwayLess®



ShallowSwayless®

