

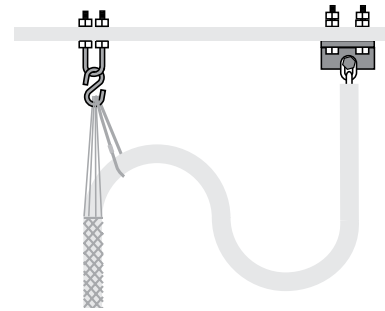
# Compensation Cable Installation Kits

## INSTALLATION KITS FOR WHISPER-FLEX AND STEADI-FLEX

### JCC kits for Whisper-Flex in standard pits (imperial components)

Part Number	For Use on Cables	U-bolt Size	S-hook Part No.	Mesh grip Part No.	Electrical Tape Part No.
JCC-10	WF 075 and WF 10	3/8 in.	79-011	024-20-1504	16-005
JCC-15	WF 15	3/8 in.	79-013	024-20-1470	16-005
JCC-20	WF 20	3/8 in.	79-013	024-20-1510	16-005
JCC-25	WF 25	3/8 in.	79-016	024-20-1510	16-005
JCC-30	WF 30	3/8 in.	79-016	024-20-1499	16-005
JCC-35	WF 35	3/8 in.	79-016	024-20-1499	16-005
JCC-40	WF 40	3/8 in.	79-016	024-20-1542	16-005

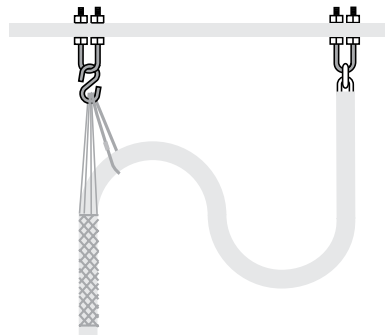
JCC installation kits contain two Support Brackets (includes grade 8 nuts, bolts, lockwashers and hardened washers), one U-bolt (includes nuts and washers), one S-hook, a mesh grip and electrical tape.



### JCCML kits for Whisper-Flex cables (metric components)

Part Number	For Use on Cables	U-bolt Size	S-hook Part No.	Mesh grip Part No.	Electrical Tape Part No.
JCCML-10	WF 075 and WF 10	10 mm	79-011	024-20-1504	16-005
JCCML-15	WF 15	10 mm	79-013	024-20-1470	16-005
JCCML-20	WF 20	10 mm	79-013	024-20-1510	16-005
JCCML-25	WF 25	12 mm	79-016	024-20-1510	16-005
JCCML-30	WF 30 and WF 35	12 mm	79-016	024-20-1499	16-005
JCCML-40	WF 40	12 mm	79-016	024-20-1542	16-005

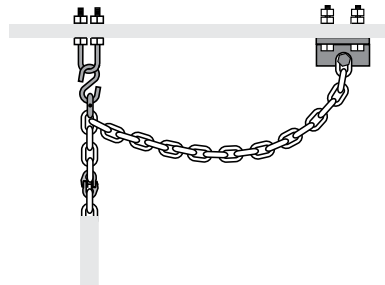
JCCML installation kits contain three U-bolts (includes nuts and washers), one S-hook, a mesh grip and electrical tape.



### JCC-CHN kits for Steadi-Flex (and Whisper-Flex in shallow pits)

Part Number	For Use on Cables	U-bolt Size	S-hook Part No.	Coupling Quantity/Size	Chain Size
JCC-10-CHN	WF 075 WF 10	3/8 in.	79-011	(1) 9/32 in.	5/16 in.
JCC-20-CHN	WF 15 & 20 SFC 15 & 20	3/8 in.	79-013	(1) 9/32 in.	5/16 in.
JCC-30-CHN	WF 25 & 30 SFC 25 & 30	3/8 in.	79-016	(2) 9/32 in.	3/8 in.
JCC-40-CHN	WF 35 & 40 SFC 35 & 40	3/8 in.	79-016	(1) 9/32 in., (1) 3/8 in.	3/8 in.

JCC-CHN installation kits contain two Support Brackets (includes grade 8 nuts, bolts, lockwashers and hardened washers), one U-bolt (includes nuts and washers) and one S-hook. JCC-CHN kits also include one or two couplings and a 4 ft. length of chain to form the safety/adjustment loop.



### Coupling kits for shallow pits

Part Number	For Use on Compensation Cable	Chain Size Quantity and Size	Coupling
WF-20-CPLG	WF 075/SFC 15 & 20	5/16 in.	(1) 9/32 in.
WF-30-CPLG	WF/SFC 25 & 30	3/8 in.	(2) 9/32 in.
WF-40-CPLG	WF/SFC 35 & 40	3/8 in.	(1) 9/32 in., (1) 3/8 in.

Coupling kits consist of the chain and coupling(s) from the JCC-CHN installation kits. They DO NOT include mounting brackets, U-bolts or S-hooks.



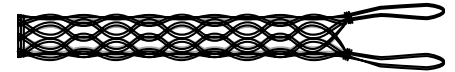
**IMPORTANT NOTE ON SAFETY AND WARRANTY FOR WHISPER-FLEX AND STEADI-FLEX:** These components are specifically designed for the installation of Whisper-Flex/Steadi-Flex cables. ONLY THE S-HOOK, MESH GRIP AND COUPLINGS ARE AVAILABLE SEPARATELY. USE OF OTHER HARDWARE (non-Draka Elevator components) COULD SERIOUSLY JEOPARDIZE THE SAFETY OF THE WHISPER-FLEX OR STEADI-FLEX CABLE INSTALLATION AND WILL VOID ANY WARRANTY.

# Compensation Cable Installation Hardware

USED IN WHISPER-FLEX AND STEADI-FLEX INSTALLATION KITS

## Stainless steel mesh grip - double eye/double weave/closed mesh

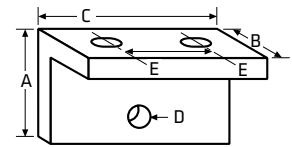
Part Number	For use on Cables	Eye Length inches • mm	Nom. Mesh Length inches • mm	Maximum Load lbs • kg
024-20-1504	WF 075, WF 10	12.0 • 305	14.0 • 356	1200 • 545
024-20-1470	WF 15	12.0 • 305	15.0 • 381	1640 • 745
024-20-1510	WF 20, WF 25	12.0 • 305	17.0 • 432	1660 • 755
024-20-1499	WF 30, WF 35	12.0 • 305	19.0 • 483	1800 • 818
024-20-1542	WF 40	12.0 • 305	21.0 • 533	1800 • 818



Maximum Load is based on minimum breaking strength with a 5:1 safety factor.

## Support bracket - two required

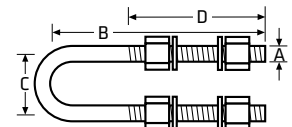
Part Number	For use on Cables	Overall Size (AxBxC) in • mm	Hole D Dia. in • mm	Slot Size in • mm	Slot E to E in • mm
n/a	WF 075 WF 10	3 x 3 x 5 • 76 x 76 x 127	3/8 • 9.5	1/2 x 7/8 • 13 x 22	2-5/8 • 66.7
n/a	WF/SFC 15 to WF/SFC 30	3 x 3 x 5 • 76 x 76 x 127	7/16 • 11	1/2 x 7/8 • 13 x 22	2-5/8 • 66.7
n/a	WF/SFC 35 to WF/SFC 40	3 x 3 x 5 • 76 x 76 x 127	1/2 • 13	1/2 x 7/8 • 13 x 22	2-5/8 • 66.7



The support bracket cannot be ordered separately.

## Steel U-bolt - one required

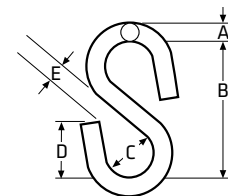
Part Number	For use on Cables	Dim. A in • mm	Dim. B in • mm	Dim. C in • mm	Dim. T in • mm	Maximum Load* lbs • kg
n/a	WF 075, WF 10 WF/SFC 15 to WF/SFC 40	3/8 • 9.5	4-3/4 • 121	2-7/8 • 73	3 • 76	2320 • 1052



The U-bolt cannot be ordered separately. Maximum Load is based on minimum breaking strength with a 5:1 safety factor.

## Steel S-hook - one required - available for individual replacement

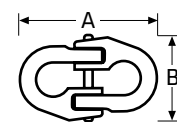
Part Number	For use on Cables	Dim. A in • mm	Dim. B in • mm	Dim. C in • mm	Dim. D in • mm	Dim. E in • mm	Yield Strength lbs • kg
79-011	WF 075, WF 10	3/8 • 9.5	2-3/8 • 60	3/4 • 19	1-1/8 • 29	17/32 • 14	1200 • 544
79-013	WF/SFC 15 to WF/SFC 20	3/8 • 9.5	2-3/4 • 70	3/4 • 19	1-1/8 • 29	1/2 • 13	2400 • 1088
79-016	WF/SFC 25 to WF/SFC 40	17/32 • 13.5	3 • 76	1 • 25	1-1/8 • 29	19/32 • 15	4800 • 2177



Since the S-Hook is designed to yield in order to alleviate possible damage in the event of obstruction, this item is available for replacement purposes.

## Coupling - one or two required for JCC-CHN installation - see page 70

Part Number	For use on Cables	For Chain Size in • mm	Dim. A in • mm	Dim. B in • mm	Working Load Limit lbs • kg
79-116	WF 075 to 20	9/32 • 7	2-17/32 • 64	15/16 • 23	4300 • 1950
79-117	WF/SFC 25 to 40	3/8 • 10	3-7/16 • 87	2-3/8 • 60	8800 • 4000



**IMPORTANT NOTE ON SAFETY AND WARRANTY FOR WHISPER-FLEX AND STEADI-FLEX:**  
These components are specifically designed for the installation of Whisper-Flex/Steady-Flex cables. ONLY THE S-HOOK, MESH GRIP AND COUPLINGS ARE AVAILABLE SEPARATELY. USE OF OTHER HARDWARE (non-Draka Elevator components) COULD SERIOUSLY JEOPARDIZE THE SAFETY OF THE WHISPER-FLEX OR STEADI-FLEX CABLE INSTALLATION AND WILL VOID ANY WARRANTY.