

Round Cable Hanging Components

FOR JUTE AND STEEL CENTER TRAVELING CABLE INSTALLATION

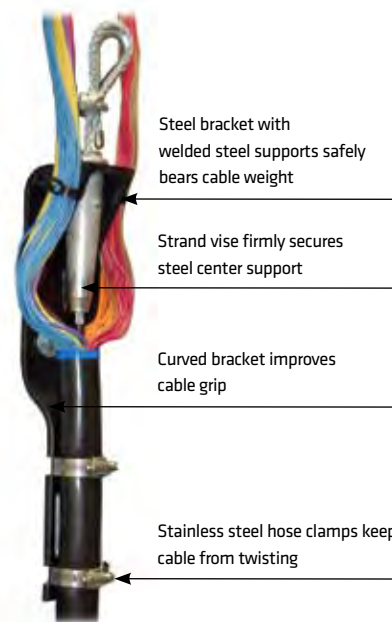
Universal Hanging System - US patent 5,080,199

Part Number	For Steel Core Dia. inches • mm	Number/ of Cables Held inches • mm	Max. per cable Load lbs • kg
3/32-1 SBKT	3/32 • 2.4	1 cable	500 • 227
1/8-1 SBKT	1/8 • 3.2	1 cable	500 • 227
5/32-1 SBKT-R	5/32 • 4.0	1 cable	700 • 318
1/4-1 SBKT	1/4 • 6.4	1 cable	1250 • 568

The Universal Hanging System is based around our patented Steel-Core Hanging Device which is designed to solidly grip and support the steel wire support member. It also safely secures the cable to the welded steel bracket thus preventing rotation.

The Universal Hanging System is a safe and effective unit that saves time and labor. It also has the added benefit of not having to bend (and possibly compromise) the steel support as required in other termination methods.

The Universal Hanging System is available in one and two cable configurations and comes as a kit with all installation hardware. Order two kits per cable, one for the car and one for the hoistway.



Universal hanging system for two cables

Part Number	For Steel Core Dia. inches • mm	Number/ of Cables Held inches • mm	Max. per cable Load lbs • kg
5/32-2 SBKT-R	5/32 • 4.0	2 cables	700 • 318
1/4-2 SBKT	1/4 • 6.4	2 cables	1250 • 568

These are two-cable versions of the Universal Hanging System. They use the same replacement strand vises shown below.

Replacement strand vises

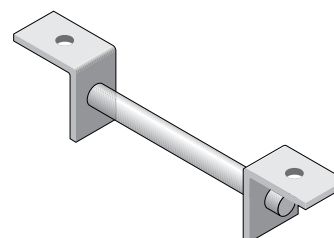
Part Number	Description
3/32 PINS-A	Replacement strand vise for 3/32 in. rope
1/8 PINS-A	Replacement strand vise for 1/8 in. rope
5/32 PINS-A	Replacement strand vise for 5/32 in. rope
1/4 PINS-A	Replacement strand vise for 1/4 in. rope

Replacement strand vises are for use ONLY in Universal Hanging Systems.



Jute core traveling cable hanger for mesh grips

Part Number	Description
HGRJC-8	Bracket used to hold/support grips that hold jute core cables - 8 in. • 20 cm clear between brackets



Beam pads

Part Number	Description
22-022	Scotch 2200 beam pads, 6-1/2 x 4-1/2 x 1/8 in. • 165 x 114 x 6 mm, packages of 10, may be purchased individually

Draka recommends beam pads be applied to surfaces where there may be occasional contact by the traveling cable.



Mesh Grips

TINNED BRONZE FOR JUTE CENTER TRAVELING CABLES - MAXIMUM HANGING LENGTHS OF 200 FT • 61 M

Single eye / single weave / closed mesh - tinned bronze

Part Number	Cable Dia. Range inches • cm	Maximum Load* lbs • kg	Eye Length inches • mm	Norm. Mesh Length inches • mm
022-01-013	.50 to .62 • 1.27 to 1.57	106 • 48	7.0 • 178	10.0 • 254
022-01-014	.63 to .74 • 1.60 to 1.88	158 • 72	8.0 • 203	10.0 • 254
022-01-015	.75 to .99 • 1.91 to 2.51	204 • 93	8.0 • 203	13.0 • 330
022-01-017	1.00 to 1.24 • 2.54 to 3.15	322 • 146	9.0 • 229	14.0 • 356
022-01-018	1.25 to 1.49 • 3.18 to 3.78	322 • 146	10.0 • 254	15.0 • 381
022-01-019	1.50 to 1.74 • 3.81 to 4.42	322 • 146	12.0 • 305	17.0 • 432
022-01-020	1.75 to 1.99 • 4.45 to 5.05	430 • 195	14.0 • 356	19.0 • 483



Single eye / single weave / split laced - tinned bronze

Part Number	Cable Dia. Range inches • cm	Maximum Load* lbs • kg	Eye Length inches • mm	Norm. Mesh Length inches • mm
022-02-013	.50 to .62 • 1.27 to 1.57	158 • 72	7.0 • 178	10.0 • 254
022-02-014	.63 to .74 • 1.60 to 1.88	158 • 72	8.0 • 203	10.0 • 254
022-02-015	.75 to .99 • 1.91 to 2.51	204 • 93	8.0 • 203	13.0 • 330
022-02-017	1.00 to 1.24 • 2.54 to 3.15	322 • 146	9.0 • 229	14.0 • 355
022-02-018	1.25 to 1.49 • 3.18 to 3.78	322 • 146	10.0 • 254	15.0 • 381
022-02-019	1.50 to 1.74 • 3.81 to 4.42	322 • 146	12.0 • 305	17.0 • 431
022-02-020	1.75 to 1.99 • 4.45 to 5.05	430 • 195	14.0 • 356	16.5 • 419



Single eye / single weave / split rod - tinned bronze

Part Number	Cable Dia. Range inches • cm	Maximum Load* lbs • kg	Eye Length inches • mm	Norm. Mesh Length inches • mm
022-03-061	.37 to .49 • .94 to 1.24	106 • 48	4.0 • 102	5.0 • 127
022-03-013	.50 to .62 • 1.27 to 1.57	106 • 48	7.0 • 178	10.0 • 254
022-03-014	.63 to .74 • 1.60 to 1.88	158 • 72	8.0 • 203	10.0 • 254
022-03-015	.75 to .99 • 1.91 to 2.51	204 • 93	8.0 • 203	13.0 • 330
022-03-017	1.00 to 1.24 • 2.54 to 3.15	322 • 146	9.0 • 229	14.0 • 356
022-03-018	1.25 to 1.49 • 3.18 to 3.78	322 • 146	10.0 • 254	15.0 • 381
022-03-019	1.50 to 1.74 • 3.81 to 4.42	322 • 146	12.0 • 305	17.0 • 432
022-03-020	1.75 to 1.99 • 4.45 to 5.05	430 • 195	14.0 • 356	19.0 • 483



Universal bale / single weave / split rod - tinned bronze

Part Number	Cable Dia. Range inches • cm	Maximum Load* lbs • kg	Eye Length inches • mm	Norm. Mesh Length inches • mm
022-03-066	.75 to .99 • 1.91 to 2.51	204 • 93	up to 16 • 400	10.5 • 267
022-03-068	1.00 to 1.24 • 2.54 to 3.15	322 • 146	up to 16 • 400	12.5 • 317
022-03-069	1.25 to 1.49 • 3.18 to 3.78	322 • 146	up to 16 • 400	14.5 • 368
022-03-070	1.50 to 1.74 • 3.81 to 4.42	322 • 146	up to 16 • 400	15.5 • 394
022-03-071	1.75 to 1.99 • 4.45 to 5.05	430 • 195	up to 16 • 400	16.5 • 419



*Maximum Load is based on minimum breaking strength with a 4:1 safety factor.

Mesh Grips

TINNED BRONZE FOR JUTE CENTER TRAVELING CABLES - MAXIMUM HANGING LENGTHS OF 200 FT • 61 M

Double eye / single weave / split laced- tinned bronze

Part Number	Cable Dia. Range inches • cm	Maximum Load* lbs • kg	Eye Length inches • mm	Nom. Mesh Length inches • mm
022-02-002	.63 to .74 • 1.60 to 1.88	170 • 77	4.0 • 102	10.0 • 254
022-02-003	.75 to .99 • 1.91 to 2.51	204 • 93	5.5 • 140	13.0 • 330
022-02-005	1.00 to 1.24 • 2.54 to 3.15	322 • 146	5.0 • 127	14.0 • 356
022-02-006	1.25 to 1.49 • 3.18 to 3.78	322 • 146	5.0 • 127	15.0 • 381
022-02-007	1.50 to 1.74 • 3.81 to 4.42	322 • 146	5.0 • 127	17.0 • 432



Double eye / single weave / split rod - tinned bronze

Part Number	Cable Dia. Range inches • cm	Maximum Load* lbs • kg	Eye Length inches • mm	Nom. Mesh Length inches • mm
022-03-001	.50 to .62 • 1.27 to 1.57	158 • 72	4.0 • 102	6.5 • 165
022-03-002	.63 to .74 • 1.60 to 1.88	158 • 72	4.0 • 102	8.5 • 216
022-03-003	.75 to .99 • 1.91 to 2.51	204 • 93	5.5 • 140	10.5 • 267
022-03-005	1.00 to 1.24 • 2.54 to 3.15	322 • 146	5.0 • 127	12.5 • 317
022-03-006	1.25 to 1.49 • 3.18 to 3.78	322 • 146	5.0 • 127	14.5 • 368
022-03-007	1.50 to 1.74 • 3.81 to 4.42	322 • 146	5.0 • 127	15.5 • 394
022-03-008	1.75 to 1.99 • 4.45 to 5.05	430 • 195	6.0 • 152	16.5 • 419



Double eye / single weave / closed mesh - tinned bronze

Part Number	Cable Dia. Range inches • cm	Maximum Load* lbs • kg	Eye Length inches • mm	Nom. Mesh Length inches • mm
022-01-001	.50 to .62 • 1.27 to 1.57	106 • 48	4.0 • 102	10.0 • 254
022-01-002	.63 to .74 • 1.60 to 1.88	158 • 72	4.0 • 102	10.0 • 254
022-01-003	.75 to .99 • 1.91 to 2.51	204 • 93	5.5 • 140	12.0 • 304
022-01-005	1.00 to 1.24 • 2.54 to 3.15	322 • 146	5.0 • 127	14.0 • 356
022-01-006	1.25 to 1.49 • 3.18 to 3.78	322 • 146	5.0 • 127	15.0 • 381
022-01-007	1.50 to 1.74 • 3.81 to 4.42	322 • 146	5.0 • 127	17.0 • 432
022-01-008	1.75 to 1.99 • 4.45 to 5.05	430 • 195	6.0 • 152	19.0 • 483



*Maximum Load is based on minimum breaking strength with a 4:1 safety factor.

Mesh Grips

STAINLESS STEEL FOR TRAVELING CABLES - MAXIMUM HANGING LENGTHS OF 200 FT • 61 M

Double eye / double weave / split laced - stainless steel

Part Number	Cable Dia. Range inches • cm	Maximum Load* lbs • kg	Eye Length inches • mm	Nom. Mesh Length inches • mm
024-20-1284	.75 to .99 • 1.91 to 2.51	620 • 282	4.0 • 102	13.0 • 330
024-20-1285	1.00 to 1.24 • 2.54 to 3.15	800 • 364	4.0 • 102	14.0 • 356
024-20-1286	1.25 to 1.49 • 3.18 to 3.78	800 • 364	4.0 • 102	15.0 • 381
024-20-1287	1.50 to 1.74 • 3.81 to 4.42	800 • 364	4.0 • 102	17.0 • 432
024-20-1500	1.75 to 2.00 • 4.45 to 5.08	1800 • 818	12.0 • 305	19.0 • 483



Double eye / single weave / split rod - stainless steel

Part Number	Cable Dia. Range inches • cm	Maximum Load* lbs • kg	Eye Length inches • mm	Nom. Mesh Length inches • mm
024-03-005	1.00 to 1.24 • 2.54 to 3.15	530 • 241	5.0 • 127	12.5 • 317
024-03-006	1.25 to 1.49 • 3.18 to 3.78	900 • 409	5.0 • 127	14.5 • 368
024-03-007	1.50 to 1.74 • 3.81 to 4.42	900 • 409	5.0 • 127	15.5 • 394
024-03-008	1.75 to 2.00 • 4.45 to 5.08	1200 • 545	6.0 • 152	16.5 • 419



Double eye / double weave / closed mesh - stainless steel

Part Number	Cable Dia. Range inches • cm	Maximum Load* lbs • kg	Eye Length inches • mm	Nom. Mesh Length inches • mm
024-20-1504	1.00 to 1.24 • 2.54 to 3.15	1200 • 545	12.0 • 305	14.0 • 356
024-20-1470	1.25 to 1.49 • 3.18 to 3.78	1640 • 745	12.0 • 305	15.0 • 381
024-20-1510	1.50 to 1.74 • 3.81 to 4.42	1660 • 755	12.0 • 305	17.0 • 432
024-20-1499	1.75 to 1.99 • 4.45 to 5.05	1800 • 818	12.0 • 305	19.0 • 483
024-20-1542	2.00 to 2.50 • 5.08 to 6.35	1800 • 818	12.0 • 305	21.0 • 533



Single eye / single weave / split rod - stainless steel

Part Number	Cable Dia. Range inches • cm	Maximum Load* lbs • kg	Eye Length inches • mm	Nom. Mesh Length inches • mm
024-03-014	.63 to .74 • 1.60 to 1.88	410 • 186	8.0 • 203	8.5 • 216
024-03-015	.75 to .99 • 1.91 to 2.51	410 • 186	8.0 • 203	10.5 • 267
024-03-017	1.00 to 1.24 • 2.54 to 3.15	530 • 240	9.0 • 229	12.5 • 317
024-03-018	1.25 to 1.49 • 3.18 to 3.78	900 • 408	10.0 • 254	14.5 • 368
024-03-019	1.50 to 1.74 • 3.81 to 4.42	900 • 408	12.0 • 305	15.5 • 394



Universal bale / single weave / split rod - stainless steel

Part Number	Cable Dia. Range inches • cm	Maximum Load* lbs • kg	Eye Length inches • mm	Nom. Mesh Length inches • mm
024-03-066	.75 to .99 • 1.91 to 2.51	336 • 153	up to 16 • 400	10.5 • 267
024-03-068	1.00 to 1.24 • 2.54 to 3.15	530 • 241	up to 16 • 400	12.5 • 317
024-03-069	1.25 to 1.49 • 3.18 to 3.78	530 • 241	up to 16 • 400	14.5 • 368
024-03-070	1.50 to 1.74 • 3.81 to 4.42	530 • 241	up to 16 • 400	15.5 • 394



*Maximum Load is based on minimum breaking strength with a 4:1 safety factor.