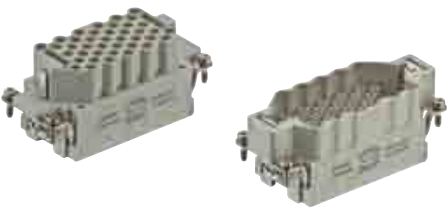




Number of contacts

40 +



Inserts

Identification	Series	Part number		Drawing	Dimensions in mm
		Male insert (M)	Female insert (F)		
<p>Crimp termination</p> <p>Order crimp contacts separately (see Technical characteristics on page 03.07)</p>	Han® EEE	09 32 040 3001	09 32 040 3101	<p>1) Distance for contact max. 21 mm</p> <p>Contact arrangement view from termination side</p> <p>Panel cut out</p>	

Stock items in bold type