

product spotlight



Now with
removable
side panels!



Available in
black only

NEMA 12 ENCLOSURE

NEMA 12 Free Standing Enclosures are constructed to be compliant with the National Electrical Manufacturers Association's Type 12 standard. NEMA 12 enclosures are intended for indoor use to provide a degree of protection to the equipment inside the enclosure against dust, falling dirt, water and noncorrosive liquids.

Features

- 19" EIA 310-E Compliant Mounting
- 3/8" SQ. (M6) 45 RMU mounting rails with RMU labels
- 2000 lb. weight capacity
- Removable side panels
- Solid side panels and AC unit panels available
 - Side Panel "A" will accept the following AC units: GL2500V, GL3500V, GL4500V, and GL6000V
 - Side Panel "B" will accept the following AC units: GL8000VHA, GL10000V, and GL12000V)
- AC Side panels are configured with an internal baffle kit to direct hot and cold air
- Optional Fan Assemblies and exhaust filters
- Two vertical lacing bars (one in each rear corner)
- Heavy duty hinges and handles
- Cable access knockouts on bottom inside of enclosure

Part No.	H	W	D	Side Panel Configuration
GL840N12-2442-SS	84"	24"	42"	Two solid sides with no AC openings
GL840N12-2442-SA	84"	24"	42"	One solid side and AC side panel "A"*
GL840N12-2442-SB	84"	24"	42"	One solid side and AC side panel "B"*
GL840N12-3042-SS	84"	30"	42"	Two solid sides with no AC openings
GL840N12-3042-SA	84"	30"	42"	One solid side and AC side panel "A"*
GL840N12-3042-SB	84"	30"	42"	One solid side and AC side panel "B"*

*Side panel A will accept the following AC units: GL2500V, GL3500V, GL4500V, and GL6000V
Side panel B will accept the following AC units: GL8000HVA, GL10000V, and GL12000V

NOTE: Previous model of NEMA 12 Enclosure (Part No. GL840N12-2442) no longer available.

AC Unit

Part No.

GL2500V
GL3500V
GL4500V
GL6000V
GL8000VHA

Description

Ice Qube AC Unit, 120V, 2500 BTU, 7.3 amps
Ice Qube AC Unit, 120V, 3500 BTU, 8.2 amps
Ice Qube AC Unit, 120V, 4500 BTU, 9.5 amps
Ice Qube AC Unit, 120V, 6000 BTU, 10.9 amps
Ice Qube AC Unit designed for high ambient applications, 120V, 8000 BTU, 14.7 amps
Ice Qube AC Unit, 120V, 10,000 BTU, 15.1 amps
Ice Qube AC Unit, 120V, 12,000 BTU, 19.6 amps



Optional Ice Qube Vertical Mount AC Unit; installs by removing two gland plates from enclosure

Note: Each ice Qube AC Unit is UL Listed and has a digital temperature controller with alarm, built in condensate evaporator, and contains CFC-free refrigerant. Ice Qube AC Units are warranted by Ice Qube for a period of 1 year from invoice date.

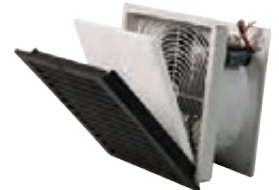
Fan Assembly and Filters

Part No.

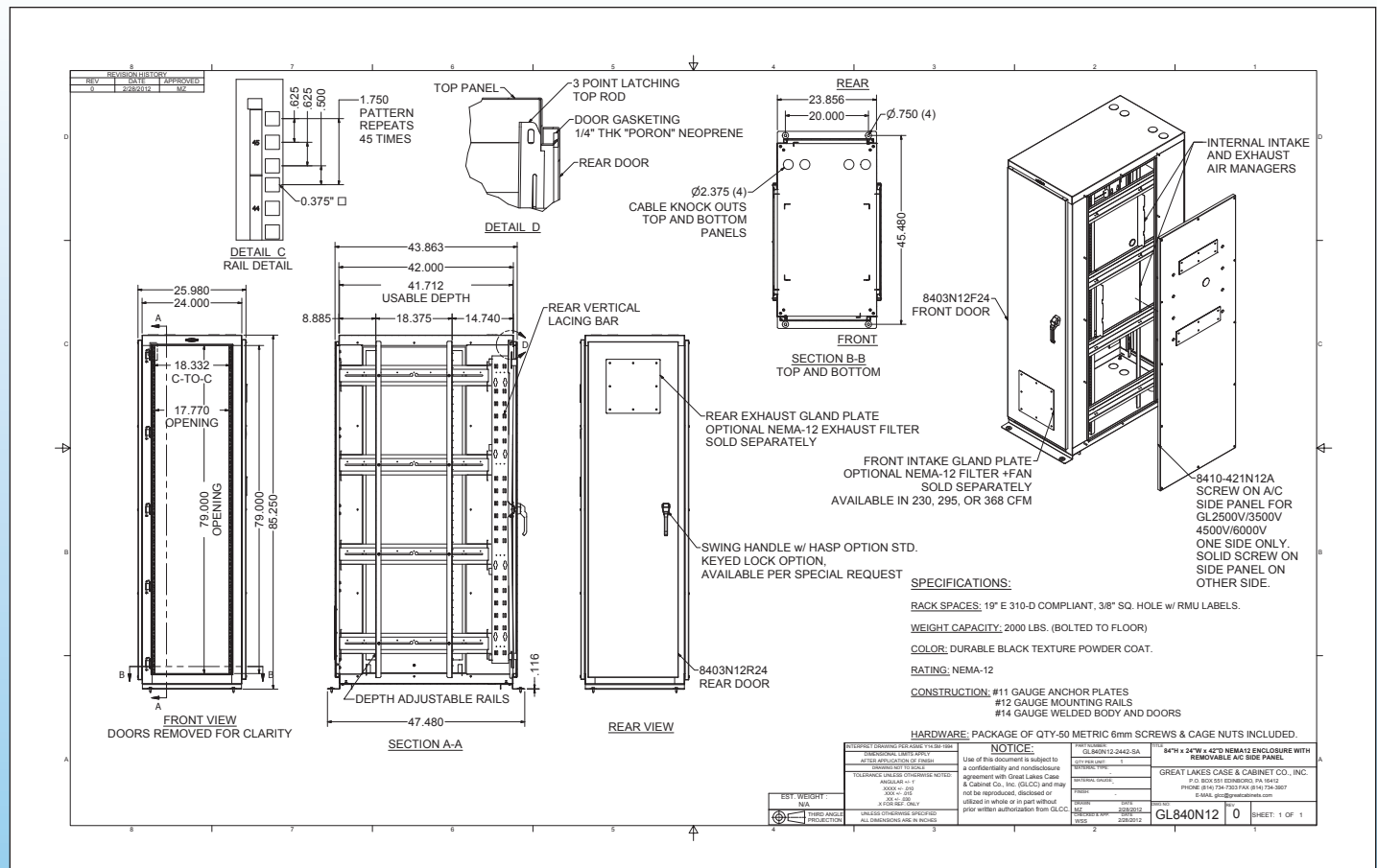
FFKN12-A1
FFKN12-A2
FFKN12-A3
FILTER-09

Description

Fan Assembly (includes filter) and exhaust filter, 230 CFM, 115V
Fan Assembly (includes filter) and exhaust filter, 295 CFM, 115V
Fan Assembly (includes filter) and exhaust filter, 368 CFM, 115V
Package of five replacement filters for fan kits



Optional Fan Assembly (includes filter)



CORPORATE HEADQUARTERS

P.O. Box 551
Edinboro, PA 16412
1.866.TRY.GLCC
(1.866.879.4522)
Phone: 814.734.7303
Fax: 814.734.3907
glcc@greatcabinets.com

GREAT LAKES MANUFACTURING, INC.

1521 Enterprise Road
Corry, PA 16407
Phone: 814.734.2436
Fax: 814.665.7025
werackyourworld.com
glm@greatmanufacturing.net

WESTERN DISTRIBUTION

4750 Joule Street
Reno, NV 89502
Phone: 775.829.9913
Fax: 775.829.9926
glcc@greatcabinets.com

GREAT LAKES INTERNATIONAL LTD.

Aerbridge House, Unit 14
Dunshaughlin Business Park
Dunshaughlin Co. Meath
Ireland
Phone: 011 353 1 825 8777
Fax: 011 353 1 825 8778

GREAT LAKES HUNGARY KFT

Zsurló utca 13
8000 Székesfehérvár
Hungary
Phone: 011 36 22 880 420
Fax: 011 36 22 880 429