



FAN THERMOSTAT CONTROLLER

PART NO.	DESCRIPTION
FTC101	Fan Thermostat Controller with 6' cord; consists of 15 amp duplex outlets, 50° to 90°F/10° to 30°C temperature range, UL Listed and CSA Certified



RACSENSE® VARIABLE SPEED FAN CONTROLLER*

The RacSense® Variable Speed Fan Controller takes real-time temperature measurements and automatically adjusts the fan speed accordingly to protect your equipment. The 1 RMU controller features web accessible remote monitoring and maintenance with instant notification alarms; dual A/C input; ability to connect up to four temperature probes. For complete specifications please visit WeRackYourWorld.com

PART NO.	DESCRIPTION
FTC102	RacSense® variable speed fan controller
PC13-515P	Power cord for fan controller (125V)
PC13-C14	Power cord for fan controller (125/250V)
GLST-12	Temperature Sensor with 12' cord

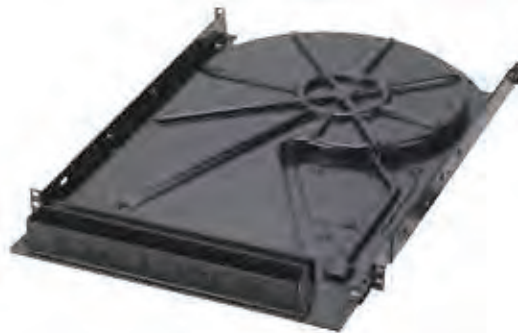


PART NO.	DESCRIPTION
7217FT	Fan Assembly with Fan Guards and three 75 CFM Fans, 2 RMU
FTBKT90	Fan Bracket to mount 7217FT at 90° angle



PART NO.	DESCRIPTION
7217FT-3	Fan Tray (front/rear mount adjustable) with Fan Guards and three 75 CFM Fans, 2 RMU
7217FT-6	Fan Tray (front/rear mount adjustable) with Fan Guards and six 75 CFM Fans, 2 RMU
7217FT-9	Fan Tray (front/rear mount adjustable) with Fan Guards and nine 75 CFM Fans, 2 RMU

Standard fan trays are 120V and available in black only. For custom fan trays or 220V trays, please call 1.866.TRY.GLCC for details.



PART NO.	DESCRIPTION
7217ECS	Rack mount, 250 CFM enclosure blower, 2 RMU, UL Listed; Visit werackyourworld.com for complete specifications
7217ECS-F12	Package of 12 filters for 7217ECS
7217ECS-FA	Filter Assembly for 7217ECS



PART NO.	DESCRIPTION
7217LE2	Fan Assembly with fan guards and two 75 CFM fans; to be mounted to a 24"W mesh contour door
7217LE3	Fan Assembly with fan guards and three 75 CFM fans; to be mounted to a 29"W mesh contour door