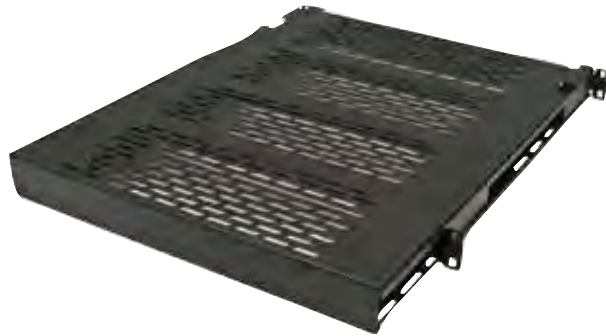
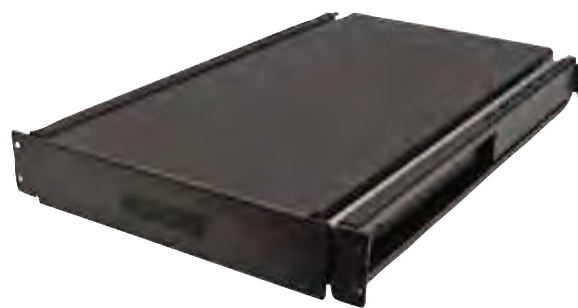


# SLIDING SHELVES **A**



- PART NO.** 7206-FRSL-AHD **DESCRIPTION** Dimensions 17.5"W x 22"D;  
Weight Capacity 110 lbs.; 2 RMU  
Maximum Tab Placement 26.125"
- 7206-FRSL-ADHD Dimensions 17.5"W x 26"D;  
Weight Capacity 110 lbs.; 2 RMU  
Maximum Tab Placement 32.125"

*All weight capacities are determined with shelf pulled out and weight extended*



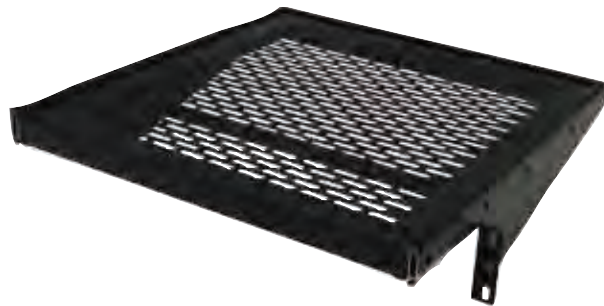
- PART NO.** 7206-FRSLA300 **DESCRIPTION** Dimensions 14.33"W x 30"D;  
Weight Capacity 300 lbs.; 2 RMU  
Maximum Tab Placement 36.12"

*All weight capacities are determined with shelf pulled out and weight extended*



- PIVOTING KEYBOARD/MOUSE TRAY**
- PART NO.** 7206-PKB-MT **DESCRIPTION** 20.625"W x 9.5"D;  
Weight Capacity 110 lbs.; 3 RMU  
Maximum Tab Placement 36.12"

*All weight capacities are determined with shelf pulled out and weight extended*



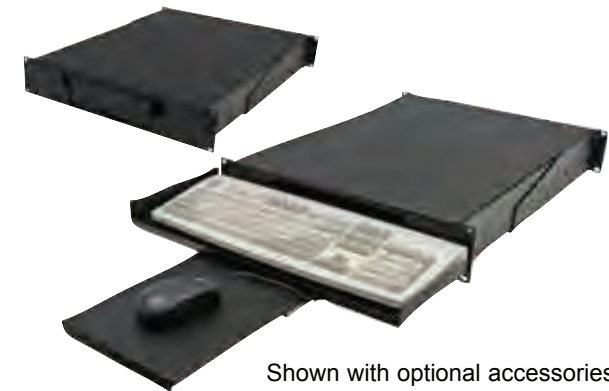
- PART NO.** 7206-SL **DESCRIPTION** Dimensions 16.343"W x 17.5"D;  
Weight Capacity 40 lbs.; 3 RMU

*\*7206-SL sliding shelf use 14" slides rated at 60 lbs.  
All weight capacities are determined with shelf pulled out and weight extended*



- PART NO.** 7206-DR **DESCRIPTION** Dimensions 16"W x 18.875"D;  
Weight Capacity 100 lbs.; 4 RMU  
Maximum Tab Placement 25.500"

*\*7206-DR sliding shelf use 16" slides rated at 120 lbs.; drawer is 7"H All weight capacities are determined with shelf pulled out and weight extended*



Shown with optional accessories.

- MONITOR/KEYBOARD/MOUSE SHELF**
- PART NO.** 7206-MKM **DESCRIPTION** Dimensions 17"W x 24"D;  
Weight Capacity 200 lbs.; 2 RMU  
Maximum Tab Placement 36.12"

*All weight capacities are determined with shelf pulled out and weight extended*