



product spotlight

GROUNDING ACCESSORIES

Grounding is an important topic with regard to enclosures, equipment mounted within them and in compliance with EIA/TIA/J-STD-607A standards.

Many electrical equipment manufacturers have their own requirements/guidelines and many data center managers have certain procedures they wish to follow or certain accessories they would like to see included in the products installed within their data center spaces.

Great Lakes offers a number of products which can provide flexibility to meet your own specific grounding needs:

Grounding Kits. We offer two types of easy-to-install grounding kits – The GR101 is for free-standing enclosures; it includes six flat tinned braided copper ground straps with a 53 amp capacity. The GR102 grounding kit is designed for use with WM, WS, WD, and WE wall mount enclosures.

Copper Bus Bars. We offer several sizes of isolated copper bus bars:

- CBB-19 For 19" mounting
- CBB-30 For the GL300E enclosure
- CBB-48 For 48" H enclosures
- CBB-60 For 60" H and 72"H enclosures
- CBB-72 For 78" H and 84" H enclosures

Tinned Copper Ground Bus Bar. We also offer the RGB-78, a tinned copper ground bus bar, 70"H to be installed prior to any equipment. It fits over existing EIA holes and is recommended for use with two and four post racks.

(Continued on back)



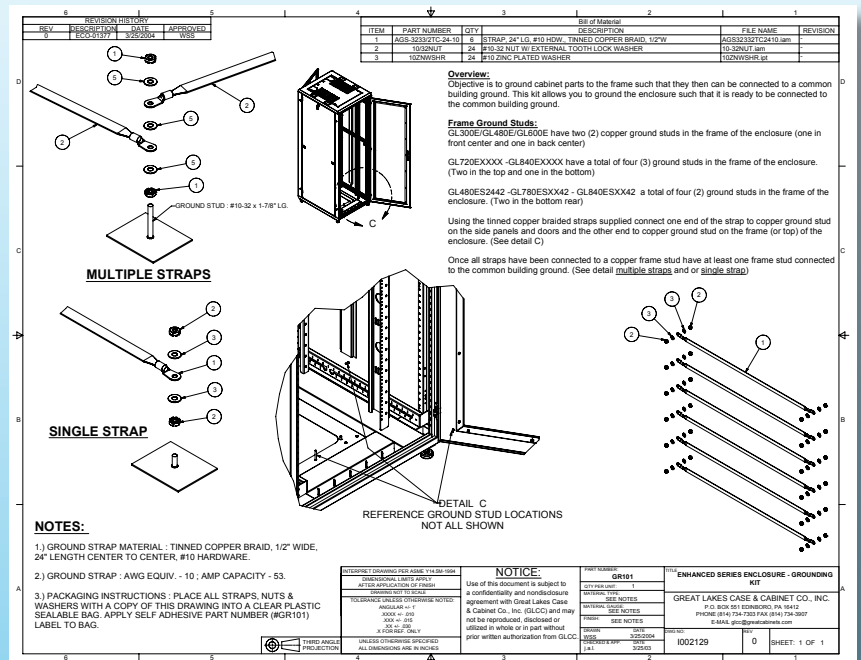
The **Grounding Studs** in our E and ES series enclosures provide a point to which the doors may be grounded to the enclosure and from which the enclosure may be connected to the facility's common ground. The studs are made from copper which is a conducting metal.

It is important to note that grounding the enclosure does not ground the equipment mounted within it. In order for any individual devices and components mounted within an enclosure to be grounded, they must be connected to a bus bar.

The **Copper Bus Bar** is a long piece of solid copper which is used to ground multiple devices to a single point. The respective devices then ground to the bus bar which, in turn, can be connected to the common grounding point within the facility. The conductivity of the copper material helps create a strong, uninterrupted connection to the common ground, providing good contact for any grounding of individual devices, all the way to the earth grounding point.

Copper has a tendency to oxidize and as a result, copper bus bars must be of significant thickness to maintain conductivity. A tinned copper bus bar uses tin as a coated material to reduce the rate oxidation of the copper material itself, allowing a tinned copper bus bar to be much thinner. The Great Lakes **Tinned Copper Bus Bar RGB-78** is designed to include a hole pattern which mirrors a 45 RMU mounting pattern. This bar is "sandwiched" between equipment mounting points and any EIA vertical mounting pattern. The bar is then connected to the facility's common ground.

For more information on any of our grounding products, please call 1-866-TRY-GLCC (1-866-879-4522) or visit us on the web at werackyourworld.com



CORPORATE HEADQUARTERS
 P.O. Box 551
 Edinboro, PA 16412
 1.866.TRY.GLCC
 (1.866.879.4522)
 Phone: 814.734.7303
 Fax: 814.734.3907
gicc@greatcabinets.com

GREAT LAKES MANUFACTURING, INC.
 1521 Enterprise Road
 Corry, PA 16407
 Phone: 814.734.2436
 Fax: 814.665.7025
werackyourworld.com
glm@greatmanufacturing.net

WESTERN DISTRIBUTION
 4750 Joule Street
 Reno, NV 89502
 Phone: 775.829.9913
 Fax: 775.829.9926
gicc@greatcabinets.com

GREAT LAKES INTERNATIONAL LTD.
 Aerbridge House, Unit 14
 Dunshaughlin Business Park
 Dunshaughlin Co. Meath
 Ireland
 Phone: 011 353 1 825 8777
 Fax: 011 353 1 825 8778

GREAT LAKES HUNGARY KFT
 Zsurló utca 13
 8000 Székesfehérvár
 Hungary
 Phone: 011 36 22 880 420
 Fax: 011 36 22 880 429