

GL84CL2PF

INTERPRET DRAWING PER ASME Y14.5M-1994	
DIMENSIONAL LIMITS APPLY AFTER APPLICATION OF FINISH	
DRAWING NOT TO SCALE	
TOLERANCE UNLESS OTHERWISE NOTED:	
ANGULAR +/- 1°	
.XXXX +/- .010	
.XXX +/- .015	
.XX +/- .030	
.X FOR REF. ONLY	
UNLESS OTHERWISE SPECIFIED ALL DIMENSIONS ARE IN INCHES	

NOTICE:
Use of this document is subject to a confidentiality and nondisclosure agreement with Great Lakes Case & Cabinet Co., Inc. (GLCC) and may not be reproduced, disclosed or utilized in whole or in part without prior written authorization from GLCC.

PART NUMBER: GL84CL2PF	
QTY PER UNIT:	1
MATERIAL TYPE:	CRS
MATERIAL GAUGE:	VARIES
FINISH:	BLACK POWDER COAT
DRAWN JAL	DATE 9/22/2009
CHECKED & APP. WSS	DATE 9/22/2009

TITLE COMPLETE 2 COMPARTMENT CO-LOCATION ENCLOSURE; PLEXI FRONT DOORS & SOLID REAR DOORS W/ FAN	
GREAT LAKES CASE & CABINET CO., INC. P.O. BOX 551 EDINBORO, PA 16412 PHONE (814) 734-7303 FAX (814) 734-3907 E-MAIL glcc@greatcabinets.com	
DWG NO: GL84CL2PF	REV -
SHEET: 1 OF 3	



THIRD ANGLE
PROJECTION

FULLY ADJUSTABLE 19"EIA
EQUIPMENT RAILS, 3/8" SQ.

PERIMETER VENTED PLEXIGLAS DOOR

CABLE MANAGEMENT RACEWAYS
SECURE FROM EACH COMPARTMENT
(CABLE ENTRY FROM TOP SHOWN)

SOLID REAR DOOR W/ EXHAUST FANS,
150 CFM TOTAL PER DOOR

18.3 CENTERS
(19" EIA)

17.8 OPENING

36.8 = 21 RMU
(PER COMPARTMENT)

84.0

28.0

36.0

FRONT VIEW
DOORS REMOVED FOR CLARITY

FRONT VIEW

RIGHT SIDE VIEW
SIDE PANELS REMOVED
FOR CLARITY

REAR VIEW

NETWORKING HOLES FOR
OPTIONAL #G101 HARDWARE

INTERPRET DRAWING PER ASME Y14.5M-1994
DIMENSIONAL LIMITS APPLY AFTER APPLICATION OF FINISH
DRAWING NOT TO SCALE
TOLERANCE UNLESS OTHERWISE NOTED:
ANGULAR +/- 1°
.XXXX +/- .010
.XXX +/- .015
.XX +/- .030
X FOR REF. ONLY
UNLESS OTHERWISE SPECIFIED ALL DIMENSIONS ARE IN INCHES

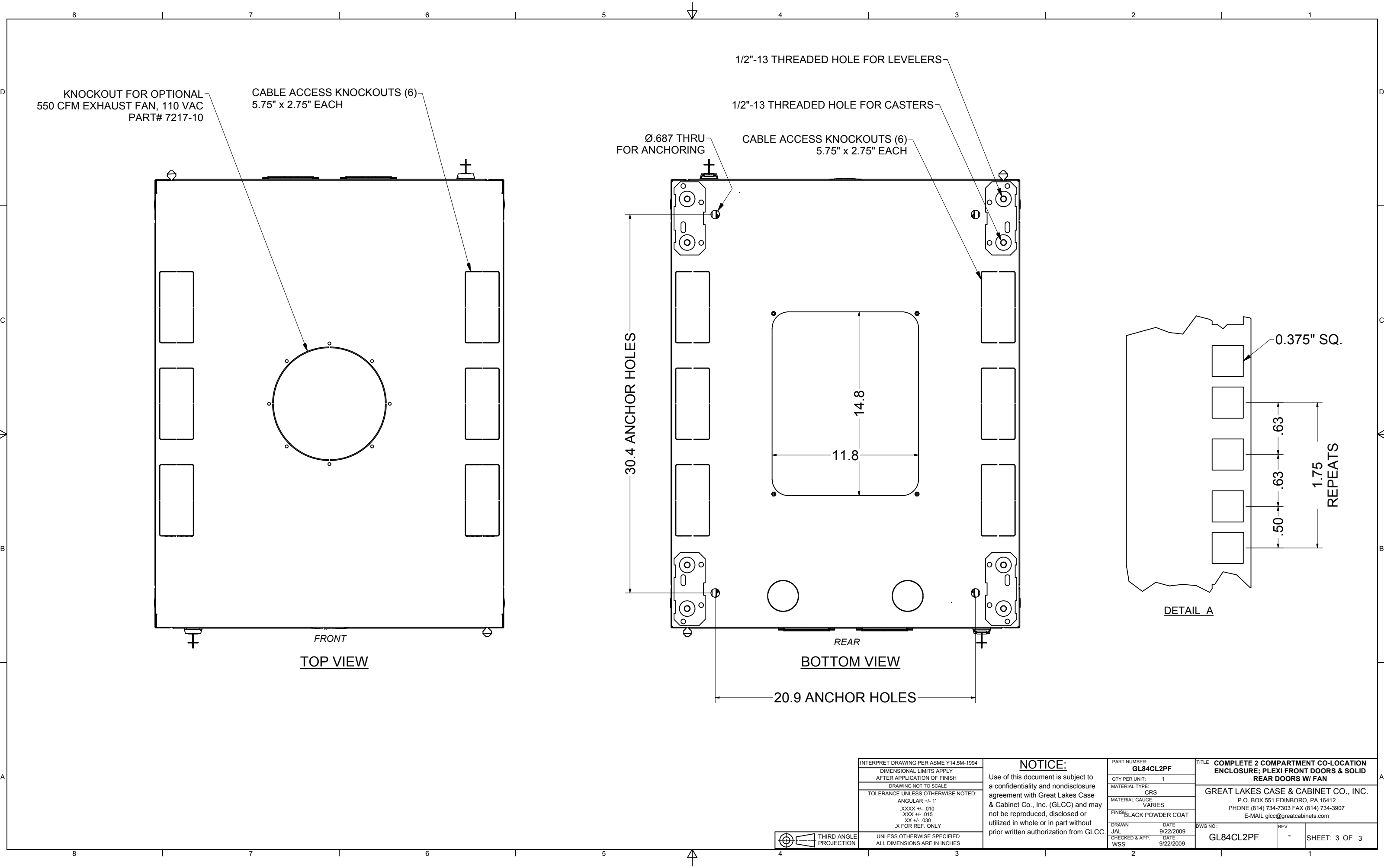


NOTICE:

Use of this document is subject to a confidentiality and nondisclosure agreement with Great Lakes Case & Cabinet Co., Inc. (GLCC) and may not be reproduced, disclosed or utilized in whole or in part without prior written authorization from GLCC.

PART NUMBER:	GL84CL2PF	
QTY PER UNIT:	1	
MATERIAL TYPE:	CRS	
MATERIAL GAUGE:	VARIES	
FINISH:	BLACK POWDER COAT	
DRAWN	DATE	
JAL	9/22/2009	
CHECKED & APP.	DATE	
WSS	9/22/2009	

TITLE COMPLETE 2 COMPARTMENT CO-LOCATION ENCLOSURE; PLEXI FRONT DOORS & SOLID REAR DOORS W/ FAN	
GREAT LAKES CASE & CABINET CO., INC. P.O. BOX 551 EDINBORO, PA 16412 PHONE (814) 734-7303 FAX (814) 734-3907 E-MAIL glcc@greatcabinets.com	
DWG NO: GL84CL2PF	REV -
SHEET: 2 OF 3	



INTERPRET DRAWING PER ASME Y14.5M-1994		<div>NOTICE:</div> <div>Use of this document is subject to a confidentiality and nondisclosure agreement with Great Lakes Case & Cabinet Co., Inc. (GLCC) and may not be reproduced, disclosed or utilized in whole or in part without prior written authorization from GLCC.</div>	PART NUMBER: GL84CL2PF		TITLE COMPLETE 2 COMPARTMENT CO-LOCATION ENCLOSURE; PLEXI FRONT DOORS & SOLID REAR DOORS W/ FAN		
DIMENSIONAL LIMITS APPLY AFTER APPLICATION OF FINISH			QTY PER UNIT: 1		GREAT LAKES CASE & CABINET CO., INC. P.O. BOX 551 EDINBORO, PA 16412 PHONE (814) 734-7303 FAX (814) 734-3907 E-MAIL glcc@greatcabinets.com		
DRAWING NOT TO SCALE			MATERIAL TYPE: CRS				
TOLERANCE UNLESS OTHERWISE NOTED:			MATERIAL GAUGE: VARIES				
ANGULAR +/- .1" .XXXX +/- .010 .XXX +/- .015 .XX +/- .030 .X FOR REF. ONLY			FINISH: BLACK POWDER COAT				
THIRD ANGLE PROJECTION	UNLESS OTHERWISE SPECIFIED ALL DIMENSIONS ARE IN INCHES		DRAWN JAL	DATE 9/22/2009	DWG NO: GL84CL2PF	REV -	
			CHECKED & APP. WSS	DATE 9/22/2009			
							SHEET: 3 OF 3