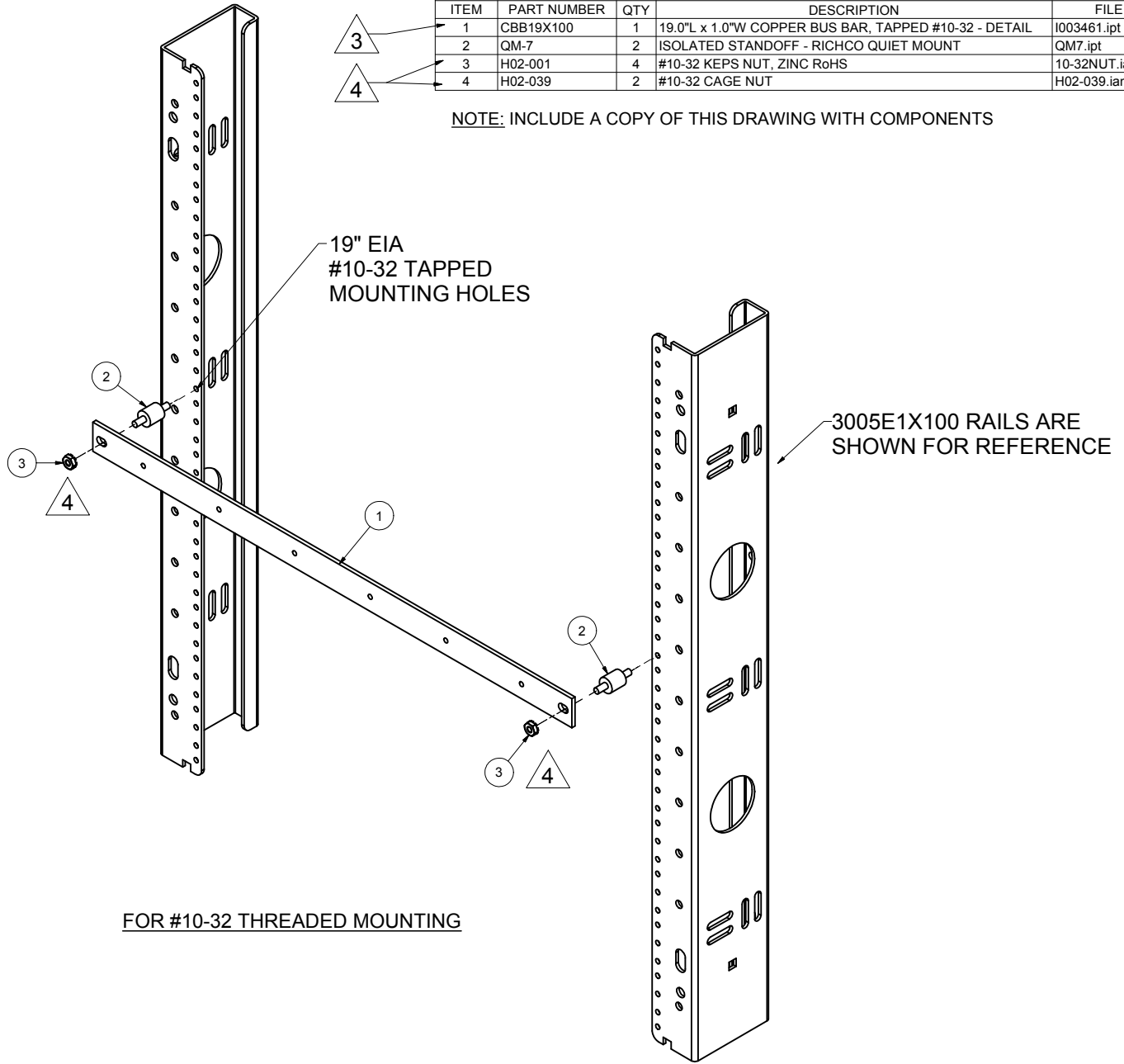


REVISION HISTORY			
REV	DESCRIPTION	DATE	APPROVED
2	ECO-01636	9/13/2005	JL
3	ECO-02431	11/14/08	CD
4	ECO-06041	10/9/2013	CDM

Bill of Material					
ITEM	PART NUMBER	QTY	DESCRIPTION	FILE NAME	REV
1	CBB19X100	1	19.0"L x 1.0"W COPPER BUS BAR, TAPPED #10-32 - DETAIL	I003461.ipt	7
2	QM-7	2	ISOLATED STANDOFF - RICHCO QUIET MOUNT	QM7.ipt	-
3	H02-001	4	#10-32 KEPS NUT, ZINC RoHS	10-32NUT.iam	-
4	H02-039	2	#10-32 CAGE NUT	H02-039.iam	-

NOTE: INCLUDE A COPY OF THIS DRAWING WITH COMPONENTS



FOR #10-32 THREADED MOUNTING

INTERPRET DRAWING PER ASME Y14.5M-1994  
 DIMENSIONAL LIMITS APPLY  
 AFTER APPLICATION OF FINISH  
 DRAWING NOT TO SCALE  
 TOLERANCE UNLESS OTHERWISE NOTED:  
 ANGULAR +/- .1°  
 .XXXX +/- .010  
 .XXX +/- .015  
 .XX +/- .030  
 .X FOR REF. ONLY

**NOTICE:**  
 Use of this document is subject to a confidentiality and nondisclosure agreement with Great Lakes Case & Cabinet Co., Inc. (GLCC) and may not be reproduced, disclosed or utilized in whole or in part without prior written authorization from GLCC.

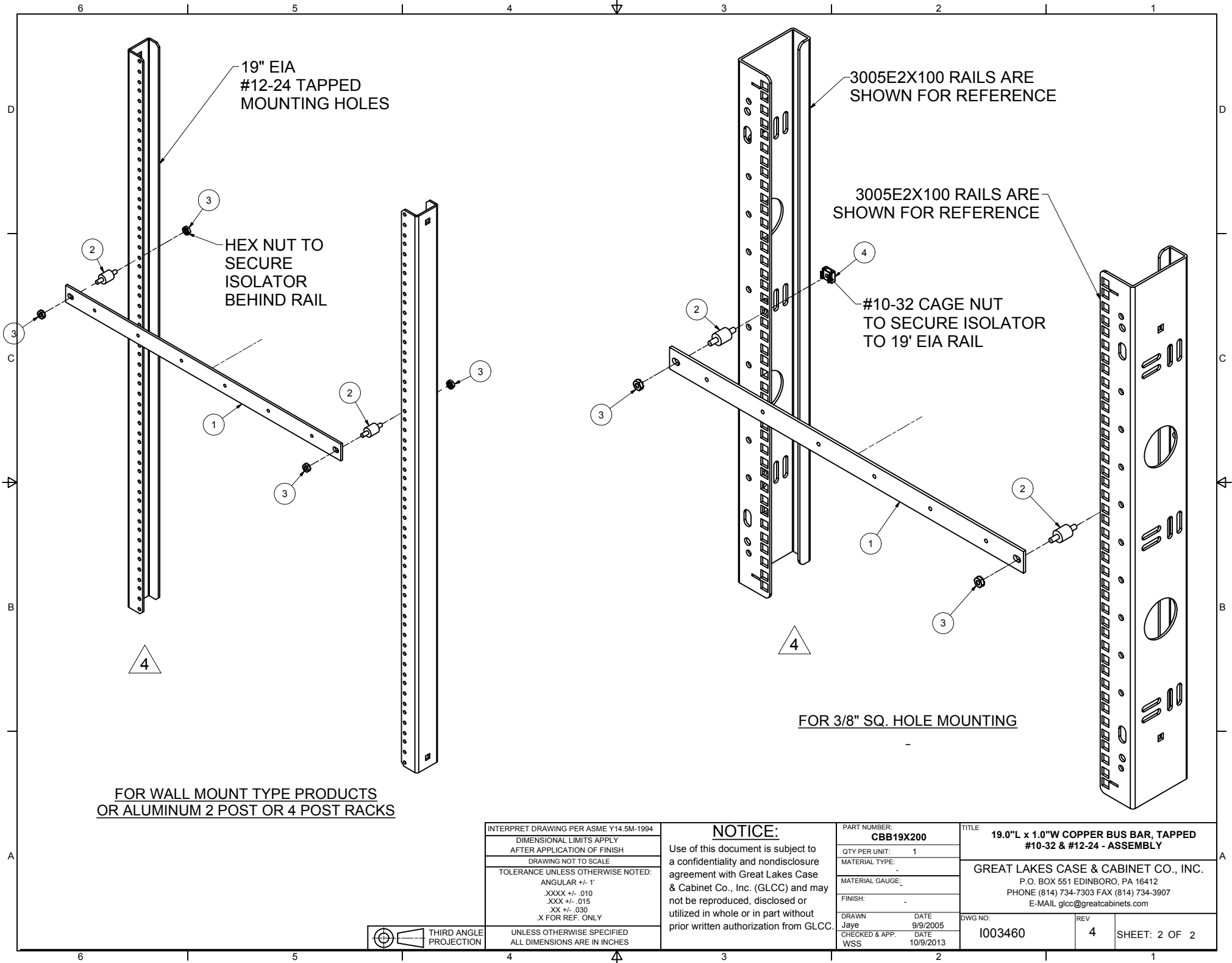
PART NUMBER:  
**CBB19X200**  
 QTY PER UNIT: 1  
 MATERIAL TYPE: -  
 MATERIAL GAUGE: -  
 FINISH: -  
 DRAWN: Jaye  
 CHECKED & APP. WSS  
 DATE: 9/9/2005  
 DATE: 9-13-05

TITLE  
**19.0"L x 1.0"W COPPER BUS BAR, TAPPED #10-32 & #12-24 - ASSEMBLY**  
 GREAT LAKES CASE & CABINET CO., INC.  
 P.O. BOX 551 EDINBORO, PA 16412  
 PHONE (814) 734-7303 FAX (814) 734-3907  
 E-MAIL glcc@greatcabinets.com



UNLESS OTHERWISE SPECIFIED  
 ALL DIMENSIONS ARE IN INCHES

DWG NO: **I003460**  
 REV: **4**  
 SHEET: 1 OF 2



19" EIA  
#12-24 TAPPED  
MOUNTING HOLES

HEX NUT TO  
SECURE  
ISOLATOR  
BEHIND RAIL

3005E2X100 RAILS ARE  
SHOWN FOR REFERENCE

3005E2X100 RAILS ARE  
SHOWN FOR REFERENCE

#10-32 CAGE NUT  
TO SECURE ISOLATOR  
TO 19" EIA RAIL

FOR WALL MOUNT TYPE PRODUCTS  
OR ALUMINUM 2 POST OR 4 POST RACKS

FOR 3/8" SQ. HOLE MOUNTING

INTERPRET DRAWING PER ASME Y14.5M-1994  
DIMENSIONAL LIMITS APPLY  
AFTER APPLICATION OF FINISH  
DRAWING NOT TO SCALE  
TOLERANCE UNLESS OTHERWISE NOTED:  
ANGULAR +/- 1'  
.XXXX +/- .010  
.XXX +/- .015  
.XX +/- .030  
.X FOR REF. ONLY

**NOTICE:**  
Use of this document is subject to a confidentiality and nondisclosure agreement with Great Lakes Case & Cabinet Co., Inc. (GLCC) and may not be reproduced, disclosed or utilized in whole or in part without prior written authorization from GLCC.

PART NUMBER:  
**CBB19X200**  
QTY PER UNIT: 1  
MATERIAL TYPE:  
MATERIAL GAUGE:  
FINISH:  
DRAWN DATE  
Jaye 9/9/2005  
CHECKED & APP. DATE  
WSS 10/9/2013

TITLE  
**19.0"L x 1.0"W COPPER BUS BAR, TAPPED  
#10-32 & #12-24 - ASSEMBLY**  
GREAT LAKES CASE & CABINET CO., INC.  
P.O. BOX 551 EDINBORO, PA 16412  
PHONE (814) 734-7303 FAX (814) 734-3907  
E-MAIL glcc@greatcabinets.com



UNLESS OTHERWISE SPECIFIED  
ALL DIMENSIONS ARE IN INCHES

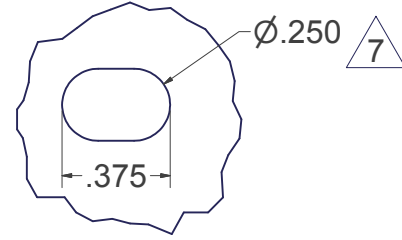
DWG NO:  
**1003460**

REV  
**4**

SHEET: 2 OF 2

REVISION HISTORY			
REV	DESCRIPTION	DATE	APPROVED
5	ECO-01636	9/22/2005	JL
6	ECO-02431	11/14/08	CD
7	ECO-06041	10/9/2013	CDM

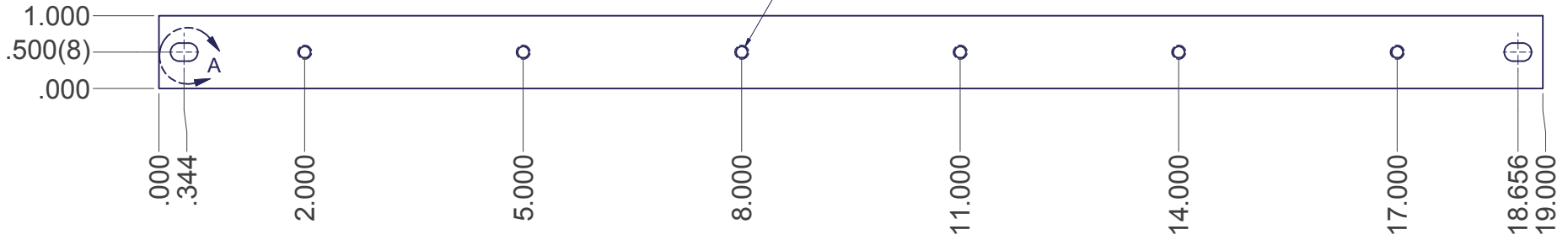
MATERIAL THICKNESS = 0.125



DETAIL A  
(2 PLACES)



6X 10-32 UNF - 2B



**6** SPECIAL NOTES:  
1) MATERIAL - C1100 / ASTM B187

INTERPRET DRAWING PER ASME Y14.5M-1994
DIMENSIONAL LIMITS APPLY AFTER APPLICATION OF FINISH
DRAWING NOT TO SCALE
TOLERANCE UNLESS OTHERWISE NOTED:
ANGULAR +/- 1°
.XXXX +/- .010
.XXX +/- .015
.XX +/- .030
.X FOR REF. ONLY

**NOTICE:**  
Use of this document is subject to a confidentiality and nondisclosure agreement with Great Lakes Case & Cabinet Co., Inc. (GLCC) and may not be reproduced, disclosed or utilized in whole or in part without prior written authorization from GLCC.

PART NUMBER:	<b>CBB19X100</b>
QTY PER UNIT:	1
MATERIAL TYPE:	SEE NOTES
MATERIAL GAUGE:	.125 THICK
FINISH:	-
DRAWN	DATE
Jaye	9/9/2005
CHECKED & APP.	DATE
WSS	9-22-05

TITLE	<b>19.0"L x 1.0"W COPPER BUS BAR, TAPPED #10-32 - DETAIL</b>
GREAT LAKES CASE & CABINET CO., INC.	
P.O. BOX 551 EDINBORO, PA 16412	
PHONE (814) 734-7303 FAX (814) 734-3907	
E-MAIL glcc@greatcabinets.com	



THIRD ANGLE PROJECTION  
UNLESS OTHERWISE SPECIFIED  
ALL DIMENSIONS ARE IN INCHES

DWG NO:	REV	SHEET:
<b>1003461</b>	<b>7</b>	<b>1 OF 1</b>