

product spotlight

BRUSH GROMMET KIT



Keeping the Cold Aisle “Cold” is always a challenge in today’s data center.

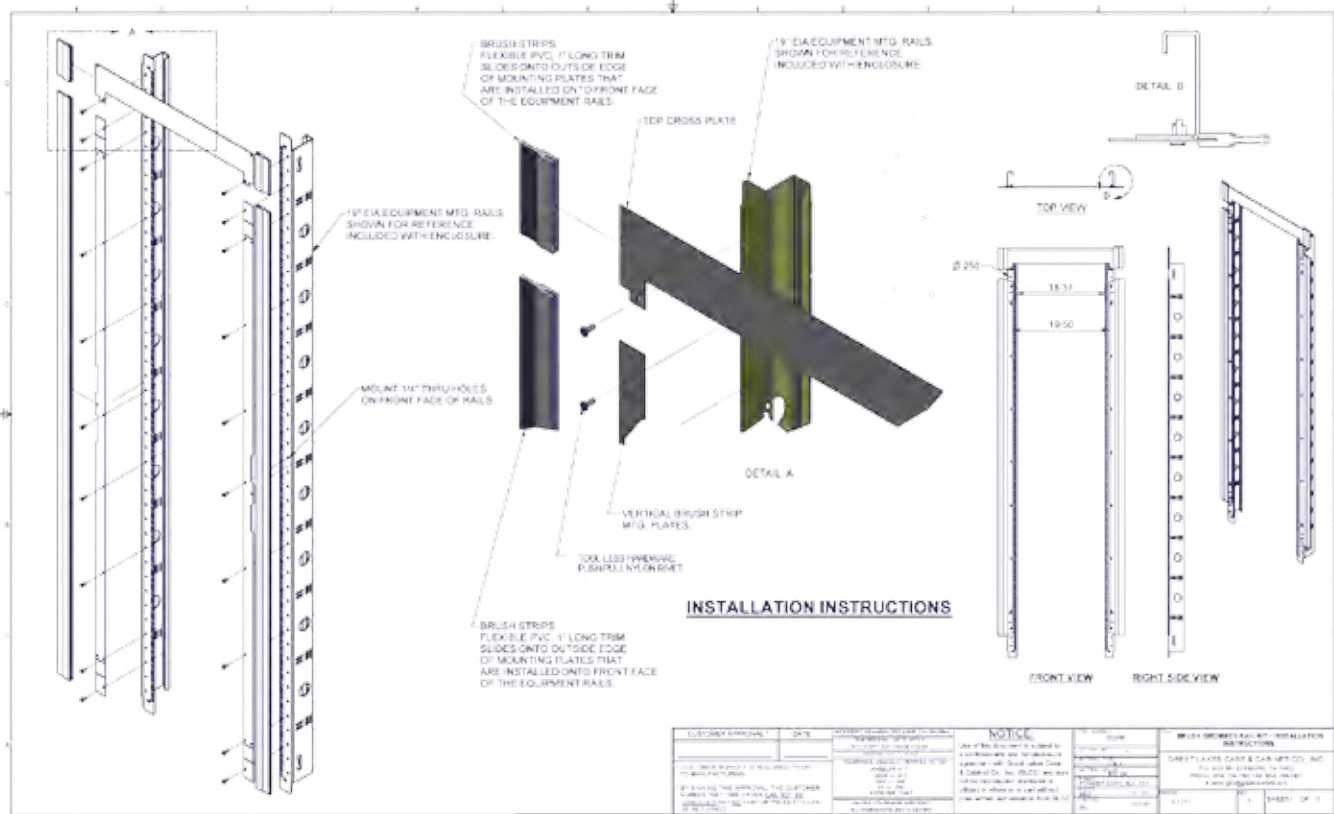
“How do you direct conditioned air and restrict hot air recirculation while facilitating cable management in the front of an enclosure?”

The answer is the Great Lakes’ Brush Grommet Kit (BGRK). The kit consists of three pieces of 16 gauge, powdercoated steel plating and four pieces of brush grommet along with easy-to-install hardware.

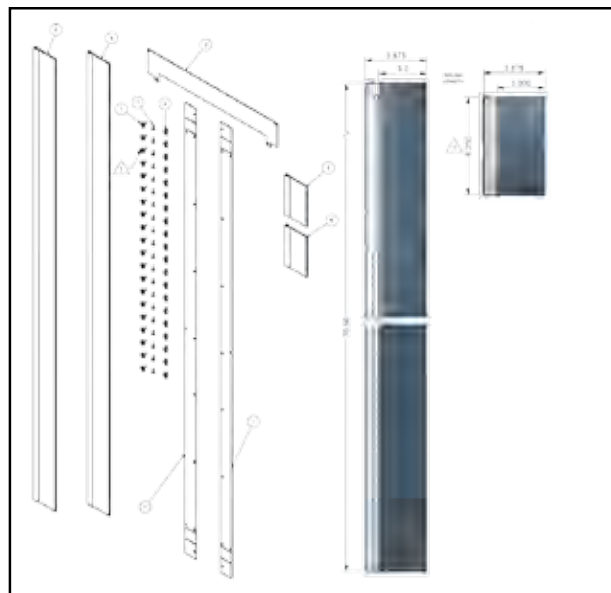
The kit is unique to Great Lakes’ enclosures as it mounts directly to our proprietary Flexible Mounting Profile (FMP), a series of holes along each rail, installed at one-RMU increments, and located outside the standards for all EIA rail-mounted equipment.

The Brush Grommet Kit quickly installs with tool-less hardware. Since the FMP is outside of EIA standards, the BGRK is also a fast and easy upgrade to your existing, fullyloaded enclosure. The kit comes in two sizes. Each kit can be installed at no charge as part of a new enclosure purchase or may be shipped as a package for easy aftermarket installation in any Great Lakes’ E and ES Series cabinet.

Part No.	Description
BGRK24	Kit for 24"W x 78" and 84"H enclosures
BGRK30	Kit for 30"W x 78" and 84"H enclosures



Great Lakes Flexible Mounting Profile (FMP)



CORPORATE HEADQUARTERS

P.O. Box 551
Edinboro, PA 16412
1.866.TRY.GLCC
(1.866.879.4522)
Phone: 814.734.7303
Fax: 814.734.3907
glcc@greatcabinets.com

GREAT LAKES MANUFACTURING, INC.

1521 Enterprise Road
Corry, PA 16407
Phone: 814.734.2436
Fax: 814.665.7025
werackyourworld.com
glm@greatmanufacturing.net

WESTERN DISTRIBUTION

4750 Joule Street
Reno, NV 89502
Phone: 775.829.9913
Fax: 775.829.9926
glcc@greatcabinets.com

GREAT LAKES INTERNATIONAL LTD.

Aerbridge House, Unit 14
Dunshaughlin Business Park
Dunshaughlin Co. Meath
Ireland
Phone: 011 353 1 825 8777
Fax: 011 353 1 825 8778

GREAT LAKES HUNGARY KFT

Zsurló utca 13
8000 Székesfehérvár
Hungary
Phone: 011 36 22 880 420
Fax: 011 36 22 880 429