

TOP DESIGNED FOR VARIETY OF REMOVABLE TOP PANELS

NETWORK/GANGING HOLES

12 GAUGE MOUNTING RAILS
- 13 RMU, 19" EIA 310-E COMPLIANT
- 0.375" SQ. CAGE NUT (STANDARD)

CABLE TIE-DOWN SLOTS

1.50" DIA. CABLE PASS THROUGH HOLES

RAILS ARE INFINITELY ADJUSTABLE FRONT-TO-REAR

DOORS CAN BE EITHER RIGHT OR LEFT-HAND HINGED

Enhanced Series Enclosure Features

- 13 RMU, 19" EIA 310-E Compliant
- Fully Welded Steel Construction #16 Gauge Steel
- Universal M6 Cage Nut Rails Standard #12 Gauge Steel
- Rack Mounting Hardware Included
- Rails are Infinitely Adjustable, Front to Rear (Max. Rail Spacing is Cabinet Depth minus 2 inches)
- Rails with RMU Markings
- TRC (True Rail Count) Rails
This certifies that the number of RMU are true and all accessible within the door opening.
- Total of Three 10/32 x 1.5" Copper Plated Grounding Studs (One in bottom, two in top)
- Weight Capacity: 300 lbs.
- Durable Powder Coat Finish
- Field Reversible Door Hinges (No Additional Hardware Required)
- Optional Features:
 - Mesh Doors
 - Ganging Hardware (No Tools Required)
 - Rack-mount Shelves
 - Variety of Top, Bottom, & Side Panels

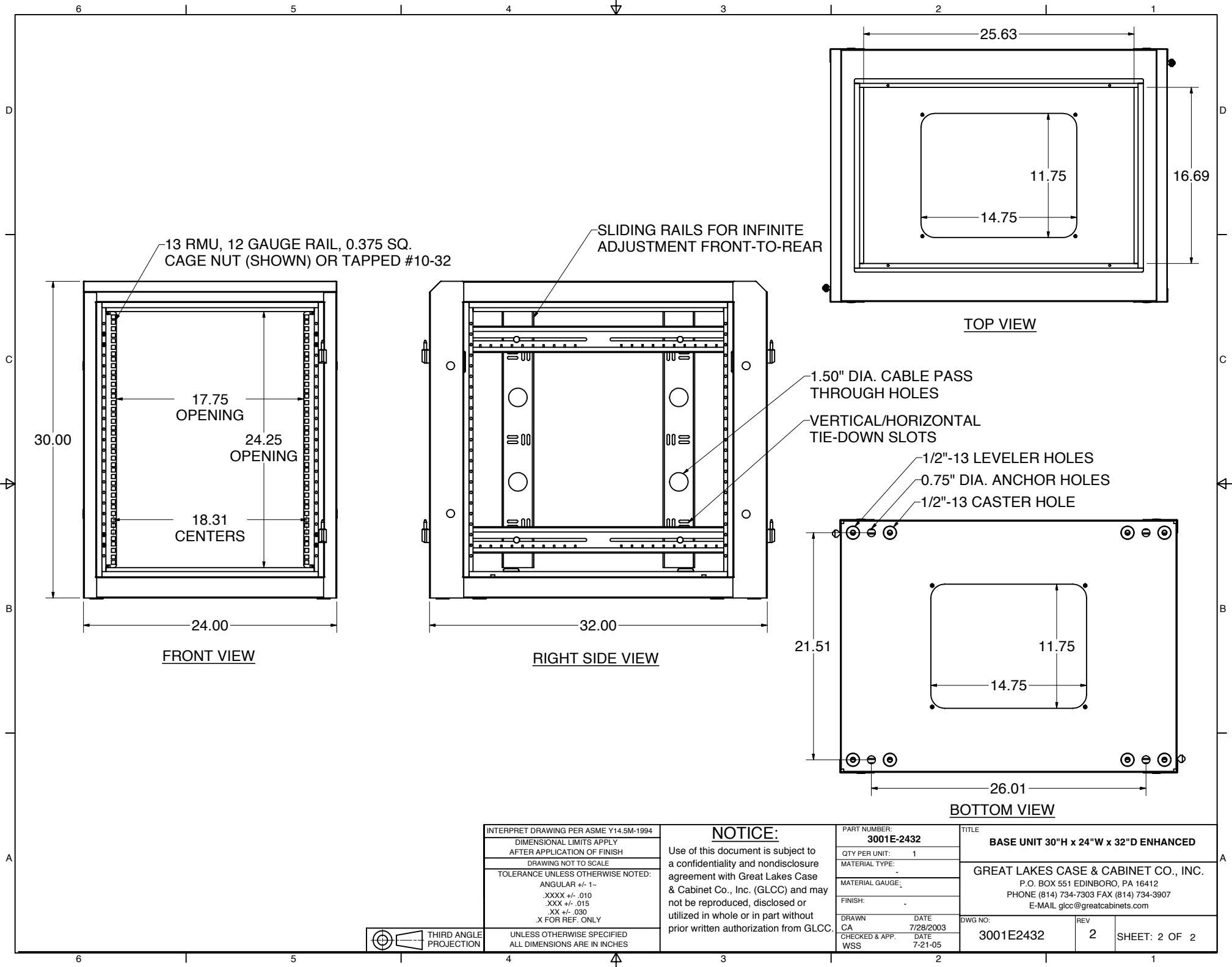
INTERPRET DRAWING PER ASME Y14.5M-1994 DIMENSIONAL LIMITS APPLY AFTER APPLICATION OF FINISH DRAWING NOT TO SCALE TOLERANCE UNLESS OTHERWISE NOTED: ANGULAR +/- 1~ .XXXX +/- .010 .XXX +/- .015 .XX +/- .030 .X FOR REF. ONLY	UNLESS OTHERWISE SPECIFIED ALL DIMENSIONS ARE IN INCHES
--	---

NOTICE:
Use of this document is subject to a confidentiality and nondisclosure agreement with Great Lakes Case & Cabinet Co., Inc. (GLCC) and may not be reproduced, disclosed or utilized in whole or in part without prior written authorization from GLCC.

PART NUMBER: 3001E-2432	TITLE BASE UNIT 30"H x 24"W x 32"D ENHANCED
QTY PER UNIT: 1	GREAT LAKES CASE & CABINET CO., INC. P.O. BOX 551 EDINBORO, PA 16412 PHONE (814) 734-7303 FAX (814) 734-3907 E-MAIL glcc@greatcabinets.com
MATERIAL TYPE:	
MATERIAL GAUGE:	
FINISH:	
DRAWN CA	DATE 7/28/2003
CHECKED & APP. WSS	DATE 7-21-05

DWG NO: 3001E 2432	REV 2	SHEET: 1 OF 2
-----------------------	----------	---------------





INTERPRET DRAWING PER ASME Y14.5M-1994
 DIMENSIONAL LIMITS APPLY
 AFTER APPLICATION OF FINISH
 DRAWING NOT TO SCALE
 TOLERANCE UNLESS OTHERWISE NOTED:
 ANGULAR +/- 1-
 .XXXX +/- .010
 .XXX +/- .015
 .XX +/- .030
 X FOR REF. ONLY
 UNLESS OTHERWISE SPECIFIED
 ALL DIMENSIONS ARE IN INCHES

NOTICE:
 Use of this document is subject to a confidentiality and nondisclosure agreement with Great Lakes Case & Cabinet Co., Inc. (GLCC) and may not be reproduced, disclosed or utilized in whole or in part without prior written authorization from GLCC.

PART NUMBER:
3001E-2432
 QTY PER UNIT: 1
 MATERIAL TYPE: -
 MATERIAL GAUGE: -
 FINISH: -
 DRAWN: CA DATE: 7/28/2003
 CHECKED & APP. DATE: 7-21-05
 WSS

TITLE
BASE UNIT 30"H x 24"W x 32"D ENHANCED
GREAT LAKES CASE & CABINET CO., INC.
 P.O. BOX 551 EDINBORO, PA 16412
 PHONE (814) 734-7303 FAX (814) 734-3907
 E-MAIL glcc@greatcabinets.com
 DWG NO.: **3001E2432** REV: **2** SHEET: 2 OF 2

