

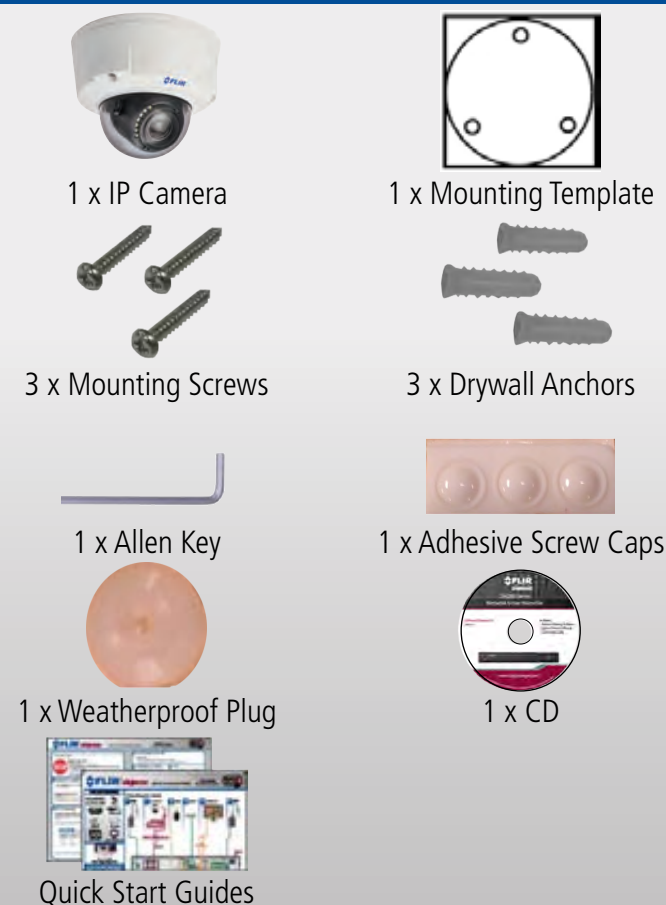


# Quick Connection Guide

DNV16M2  
2.1MP HD IR Vandal Dome IP Camera



## PACKAGE CONTENTS:



Latest software and manuals available on  
**www.flirsecurity.com**

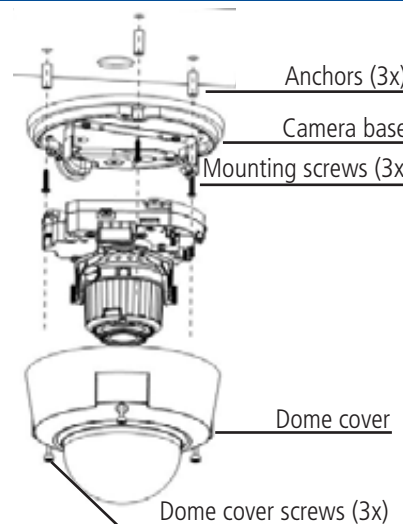


For support, visit  
**www.flirsecurity.com**

Information in this document is subject to change without notice. As our products are subject to continuous improvement, FLIR Systems, Inc. and our subsidiaries reserve the right to modify product design, specifications and prices, without notice and without incurring any obligation. E&OE © 2013 FLIR Systems, Inc. All rights reserved.

## 1 Installing the Camera

- A** Use the included allen key to loosen the dome cover screws (3x) and remove the dome cover.
- B** Use the included mounting template to drill holes for the mounting screws.  
**NOTE:** Use the included drywall anchors if installing into drywall.
- C** Connect the cables as shown in the section "Connecting the Cables".  
**NOTE:** If you are running the cable through the side conduit, remove the side conduit cap and run the cable through the side conduit.
- D** Mount the camera to the surface using the included mounting screws (3x).
- E** Adjust the camera angle according to the next section, "Adjusting the Camera".



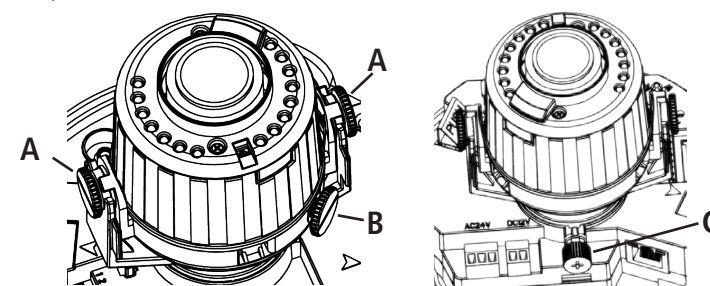
**!** Make sure the weatherproof plug is firmly inserted into the hole at the bottom of the camera housing.



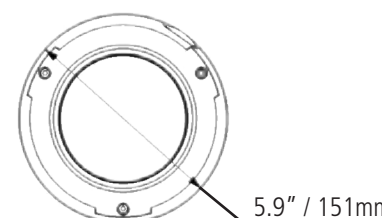
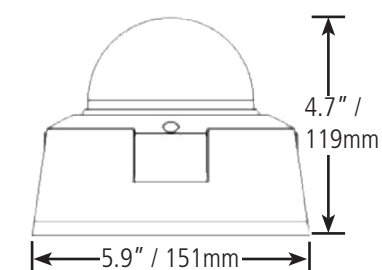
Weatherproof plug must be inserted

## 2 Adjusting the Camera

- A** Loosen the knobs on the sides of the lens to adjust the vertical position of the camera.
- B** Loosen the offset knob to twist the camera lens.
- C** Loosen the knob under the camera module to adjust the horizontal position of the camera.
- NOTE:** The zoom/focus is adjusted using the web browser interface or a FLIR NVR. See the Instruction Manual on the CD for details.
- !** Ensure that the IR LEDs are clear of the housing when the dome cover is installed to avoid IR reflection, which can cause cloudiness in the nighttime image.
- D** Replace the dome cover and tighten the dome cover screws (3x).
- E** Place the adhesive screw caps over the dome cover screws to ensure the weatherproof rating of the camera. Remove the vinyl film from the dome cover.

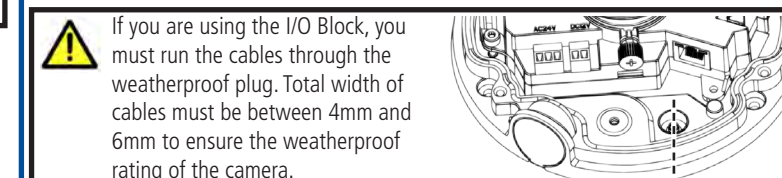


## Weights & Dimensions



## 3 Connecting the Camera

- A** Ethernet Port: Connect the camera to an NVR or a router or switch on your network using Cat5e or better Ethernet cable (not included). PoE Class 3 supported.
- B** DC12V Input: If not using PoE, connect the camera to a DC12V power source (600mA or higher required).
- C** AC24V Input: Connect the camera to an AC24V power source (480mA or higher required).  
**NOTE:** To use AC24V power, you must redirect the terminals from the DC12V block to the AC24V block.
- D** DC12V Terminal: Connection block for DC12V power.
- E** I/O Block (Optional): Includes ports for 1x alarm input, 1x audio input, 1x audio output, and 1x analog video output.
- !** If you are using the I/O Block, you must run the cables through the weatherproof plug. Total width of cables must be between 4mm and 6mm to ensure the weatherproof rating of the camera.
- Run I/O cables through the weatherproof plug



## Safety Precautions

- Use an appropriate low voltage power cable to prevent fire or electrical shock.
- If using DC power, make sure to follow the correct polarity as marked on the power cable.
- Make sure to install the camera in an area that can support the camera weight.
- There are no user serviceable parts inside the camera. Please do not disassemble the camera.
- Do not clean the lens cover with an abrasive cleaning material. Please use a soft cloth to clean the lens cover.
- Camera is rated for outdoor use (IP66), but is not intended for submersion in water.

## FCC Notice

This equipment has been tested and found to comply with the limits for a Class A digital device, pursuant to Part 15 of the FCC Rules. These limits are designed to provide reasonable protection against harmful interference when the equipment is operated in a commercial environment. This equipment generates, uses, and can radiate radio frequency energy and, if not installed and used in accordance with the instruction manual, may cause harmful interference to radio communications. Operation of this equipment in a residential area is likely to cause harmful interference in which case the user will be required to correct the interference at his own expense.

DNV16M2\_QCG\_EN\_R1