

MNTZ36P Pole Mount Bracket User's Manual

- ❑ Compatible with Digimerge Camera Models: DPZ36W023 / DPZ36W030
❑ Required Accessory: MNTZ36W

▣ Usage Cautions and Warnings

Please read through the User Manual and all safety instructions prior to use.

- All the safety and operating instructions should be read before installing. Follow all operating instructions.
- Installation must be performed by a trained professional.
- Do not use the product with cameras other than the recommended models.
- The mounting has to be installed onto a firm and stable location that can support the weight of the camera and mount. Ensure all parts are completely secured.
- Do not use the product for other purposes.

Product Characteristics

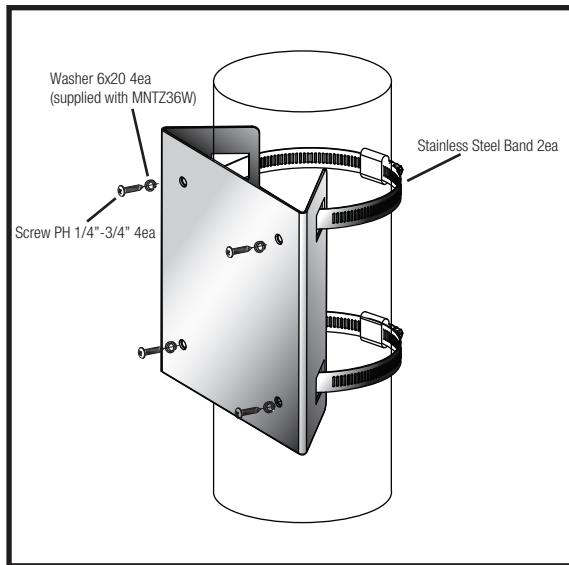
This product has been designed to be used in the installation of speed dome cameras. This product has been fabricated using strong, corrosion-free aluminum alloy material.

Prior To Installation

Avoid installing the mounting onto an unstable structure such as a gypsum wall panel. Install the mounting onto a strong structure such as a concrete wall, steel beam, etc. Use concrete screws with plugs or other installation tools when installing the mount onto a concrete structure. Make sure that all the screw parts are metallic.

Avoid screwing too close to the edge of a piece of wood when screwing into a wooden structure.

Installation



NOTE: Minimum pole diameter supported: 66mm.
Maximum pole diameter supported: 75mm.
Larger stainless steel bands supported, see your local reseller for details.

Description

- Steel body
- Unit : 0.7Kg

Accessories

No	Part Name	Q'ty
1	SCREW PH 1/4" - 3/4" (SUS)	4
2	STAINLESS STEEL BAND 3" (SUS)	2

Dimensions

