

MNTZ36C Ceiling Mount Bracket User's Manual

Compatible with Digimerge Camera Models: DPZ36W023 / DPZ36W030

Usage Cautions and Warnings

Please read through the User Manual and all safety instructions prior to use.

- All the safety and operating instructions should be read before installing. Follow all operating instructions.
- Installation must be performed by a trained professional.
- Do not use the product with cameras other than the recommended models.
- The mounting has to be installed onto a firm and stable location that can support the weight of the camera and mount. Ensure all parts are completely secured.
- Do not use the product for other purposes.

Product Characteristics

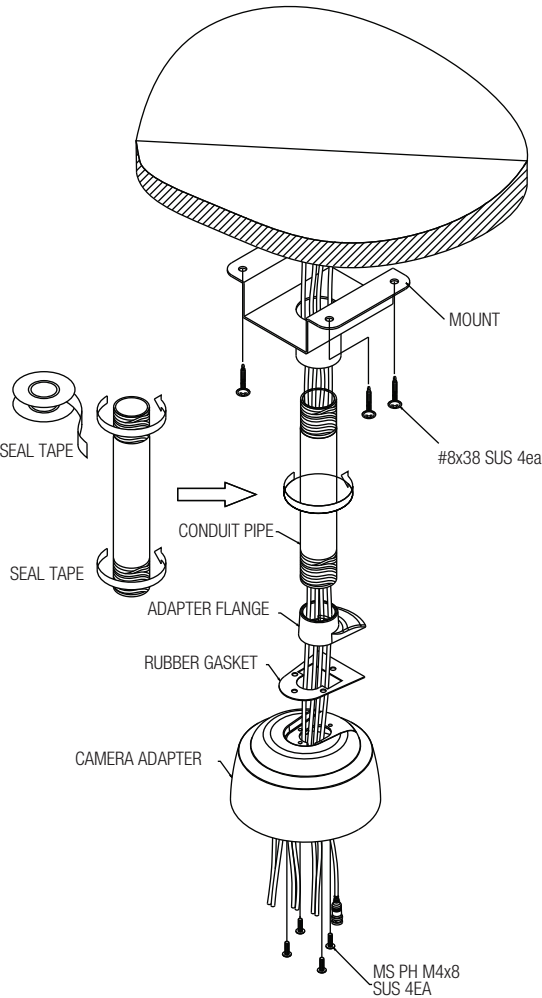
This product has been designed to be used in the installation of speed dome cameras. This product has been fabricated using strong, corrosion-free aluminum alloy material.

Prior To Installation

Avoid installing the mounting onto an unstable structure such as a gypsum wall panel. Install the mounting onto a strong structure such as a concrete wall, steel beam, etc. Use concrete screws with plugs or other installation tools when installing the mount onto a concrete structure. Make sure that all the screw parts are metallic.

Avoid screwing too close to the edge of a piece of wood when screwing into a wooden structure.

Installation



NOTE: Camera installation requires the M4x12 mounting screws supplied with the camera. Make sure the o-rings are attached to the mounting screws and dome cover torx screws to prevent water ingress.

Accessories

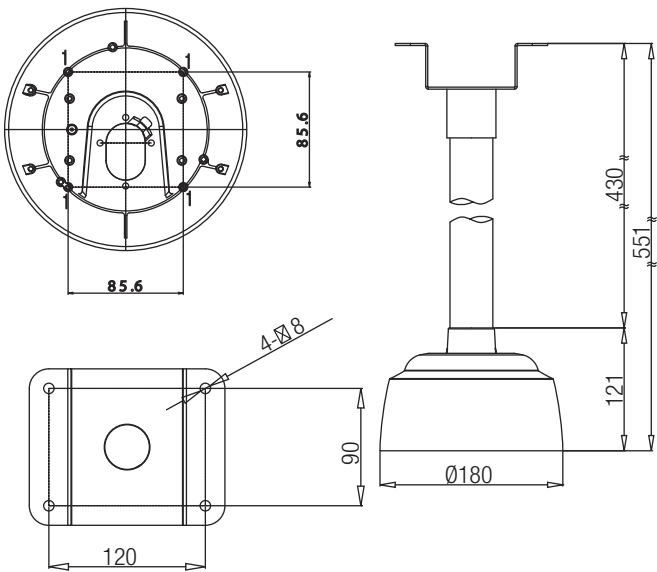
No	Part Name	Q'ty
1	SCREW 8x38 (SUS)	4
2	SCREW PH M4x8 (SUS)	4
3	RUBBER GASKET (SILICON)	1
4	SEAL TAPE (12mm)	1

- ① Drill holes in the surface for the cables and mount screws and run the cables through the cable hole.
- ② Run the cables through the mount and attach the mount to the surface using the 8x38 screws (4ea).
- ③ Wrap seal tape around the threads at the top and bottom of the conduit pipe. Run the cable through the conduit pipe and screw the conduit pipe into the mount firmly to ensure a proper seal.
- ④ Insert the rubber gasket between the camera adapter and the adapter flange and connect the adapter flange to the camera adapter using the PH M4x8 screws (4ea). Run the cables through the camera adapter assembly, and screw the camera adapter assembly onto the conduit pipe.
- ⑤ Install the camera into the camera adapter (see instructions on back of sheet).

Description

- Aluminum & Steel body
- Unit : 1.5Kg

Dimensions



NOTE: Mount supports 1/4" NTP threaded conduit.

MNTZ36C Ceiling Mount Bracket User's Manual

ATTENTION: Make sure the o-rings are attached to the mounting screws and dome cover torx screws to prevent water ingress.

Installing the camera into the camera adapter:

- ① Connect the cables inside the camera adapter.
- ② Loosen the dome cover torx screws (3ea) and remove the dome cover from the camera base.
- ③ Mount the camera base to the #1 holes in the camera adapter using the M4x12 screws (4ea) supplied with the camera with o-rings attached.
- ④ Attach the dome cover to the camera base using the dome cover torx screws (3ea) with o-rings attached.

