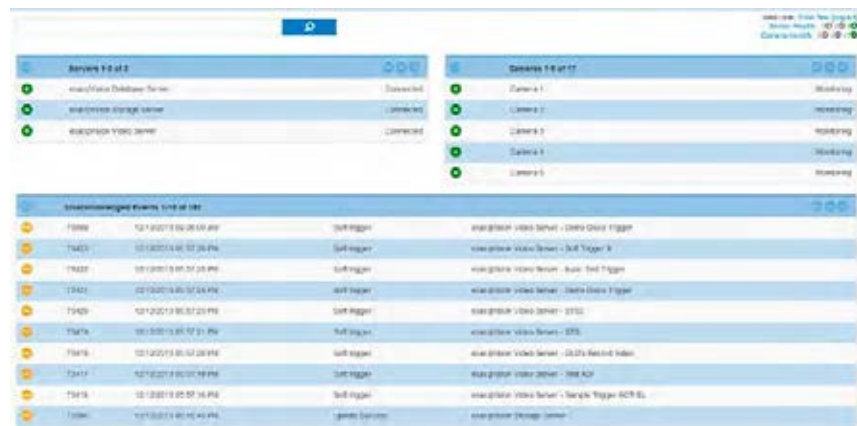


## Enterprise System Manager (ESM) Minimizes Downtime of exacqVision Servers



### Features That Make a Difference:

- Maximize uptime of your exacqVision Enterprise servers** with constant server health monitoring. Receive email notifications or use ESM's browser-based dashboard to receive immediate notification of system errors and warnings.
- Instant health assessment of all exacqVision Enterprise servers from anywhere** using the intuitive dashboard to visually confirm the health of all exacqVision servers from a PC browser, tablet or smartphone.
- Highly flexible e-mail notifications** allow individual users or groups of users to be e-mailed real-time or periodically for over 25 user selectable errors and warnings such as VMS recorder offline, storage warning, drive failure, temperature alarm or camera disconnected.
- Reduce software maintenance time** with scheduled software updates. In a matter of minutes, you can schedule hundreds or thousands of servers to receive the latest exacqVision features.
- Monitor camera health** and events to confirm camera uptime and proper positioning.



## CAPACITY, FEATURES & LICENSING

Required ESM License	One EVESM
Required Recorder License	exacqVision Enterprise with current SSA
Recorder Hardware Monitoring	exacqVision recorders
Recorder Software Monitoring	exacqVision recorders and third-party recorders
Camera Monitoring	exacqVision recorders and third-party recorders
Maximum Monitored Recorders	1,500
Maximum Concurrent Clients	50

## MINIMUM SERVER REQUIREMENTS

Typically monitors less than 50 servers with up to 5 simultaneous client connections

Processor	Intel i3-4100 or better
RAM	8GB minimum
Storage	100GB SSD
Network	25 Kbps per video recorder, plus 256 Kbps per simultaneous client connection
Operating System	Windows 7 or Server 2008 R2, Ubuntu 10.04 Linux (64 bit or 32 bit with PAE)

## RECOMMENDED SERVER REQUIREMENTS

Typically monitors 500 or more servers with 25 simultaneous client connections

Processor	Intel E3-1275 Xeon or better
RAM	16GB (32GB recommended for > 1,000 recorders)
Storage	250GB SSD
Network	50 Kbps average, 1 Mbps peak per video server. 512 Kbps per client connection
Operating System	Windows 8 or Server 2012, Ubuntu 12.04 Linux
E-mail Host	SMTP e-mail server

## PC CLIENT REQUIREMENTS

Processor	Intel Atom Z3470 or better
RAM	1GB Minimum
Network	256 Kbps minimum, 2 Mbps recommended for live video streaming
Browser	IE 9, Chrome 31, Safari 7, Mozilla Firefox 25

## MOBILE CLIENT REQUIREMENTS

Compatibility	iOS or Android phones and tablets with Chrome 31 or Safari 7 or better
Network	128 Kbps minimum, 1 Mbps recommended with live video
Browser	Microsoft® IE for Mobile, Google Chrome, Safari

## Related Products



exacqVision Enterprise VMS

exacqVision hybrid & IP camera servers

[www.exacq.com](http://www.exacq.com)