

BMP®51 and BMP®53 Label Makers

www.BradyID.com/bmp51

Portable Printers

NEW!



BMP®51
LABEL MAKER



View Online!

Visit www.BradyID.com/bmp51 for more information on the BMP®51 and BMP®53 label printers.

Your Complete Printing Solution:

BMP®51 & BMP®53 cartridges with label and print ribbon..... page 260

Made to get the **job done.**

Helps you get the job done faster, easier and with confidence. This labeler has the versatility, print capabilities and convenience to help you tackle your toughest labeling jobs in a snap.

- Fast print speed. Prints 1 inch per second!
- Material recognition and automatic label formatting
- Built-in Bluetooth® technology or optional Wi-Fi card for wireless printing via a network
- Large, graphical display with backlight
- Durable built-in cutter with label retention
- Software compatibility for advanced label design
- Continuous and die-cut label materials available
- More than 20 material types and over 190 label parts
- Prints labels up to 1.5" wide (or continuous labels up to 40"!)
- Tough, durable label materials that won't fade, smear or fall off
- Ribbon and label materials in one easy to load cartridge

Don't need the keyboard or screen?

Check out the BMP®53 Label Maker - many of the same features as the BMP®51 Label Maker, minus the display screen and keyboard.

- Create labels with LabelMark™ or CodeSoft™ Software, or using a Brady Mobile App on your smart phone
- Use the same label cartridges as BMP51

BMP®51 & BMP®53 Label Printer Parts

Catalog #	Description
75447314707	BMP51 Printer with AC Adaptor*
75447314703	BMP51 Printer, Rechargeable Li-Ion Battery Pack and AC Adaptor/Battery Charger*
75447314705	BMP51 Printer, LabelMark™ 5 Software and AC Adaptor*
75447314708	BMP53 Peripheral Printer with AC Adaptor*
75447314704	BMP53 Printer, Rechargeable Li-Ion Battery Pack and AC Adaptor/Battery Charger*
75447314706	BMP53 Printer, LabelMark™ 5 Software and AC

* Printer ships with Hard Carrying Case, Battery Tray for AA batteries, USB Cable, Drivers CD, Product CD, Quick Start Guide, and one MC-1500-595-WT-BK.

Patents applied for:

6,732,619 and 7,070,347 on the BMP®51 and BMP®53 Label Makers
6,929,415 on the PermaSleeve® cartridges

Accessories

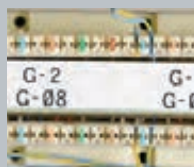
Catalog #	Description
M50-MAGNET	BMP®50 Series Magnet Accessory
BMP-UBP	Lithium Ion Rechargeable Battery Pack for Mobile Printers
BMP-UBP-AC	Lithium Ion Rechargeable Battery Pack with AC Adaptor/Battery Charger
NET-WIFI	Brady Network Card - Bluetooth and WIFI
NET-LAN	Brady Network Card - Ethernet only
NET-BT-WIFI-LAN	Brady Network Card - Bluetooth/WIFI/Ethernet
M50-HC	BMP®50 Series Hard Carrying Case
M50-SC	BMP®50 Series Soft Carrying Case
M50-AC	BMP®50 Series AC Adaptor/Battery Charger
M50-CABLE	BMP®50 Series USB Cable
M50-BATT-TRAY	BMP®50 Series Spare Battery Tray
LM5STDCCD	LabelMark™ 5 Standard Software - CD-ROM



Brady 360® Replacement Printer Plan supplements the Limited Warranty already included with your printer purchase. This Replacement Plan allows you can return your qualified printer for a replacement printer within the first 12 months of purchase. You must purchase the replacement program at the time of printer purchase in order to receive benefits.

*Printheads are covered. *Limit of two printers in the first 12 months of initial purchase.

Get the job done **FASTER, EASIER** and **WITH CONFIDENCE.**



Voice & Data
Communications



PermaSleeve®
Wire Marking Sleeves



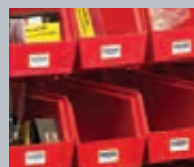
Product Identification



Facility & Safety
Identification



Laboratory
Identification



General ID
...and many more!