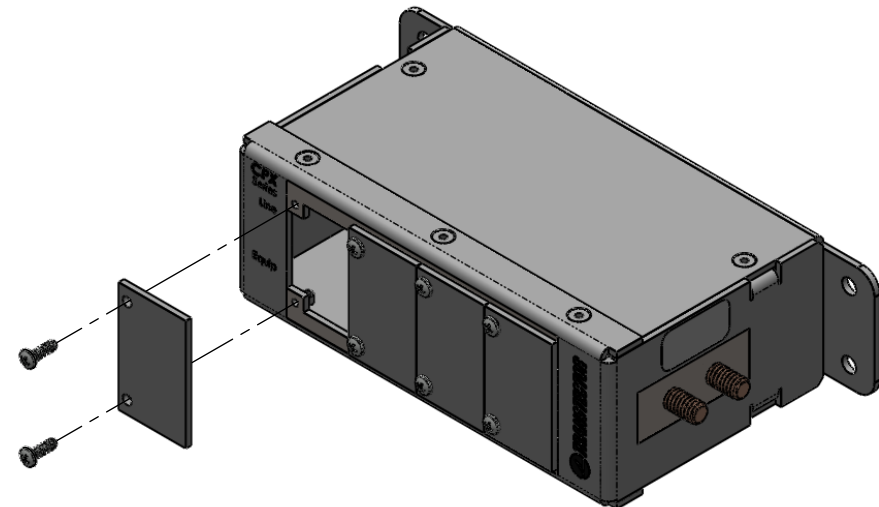
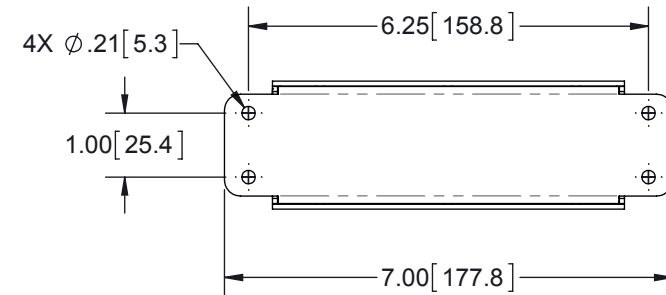
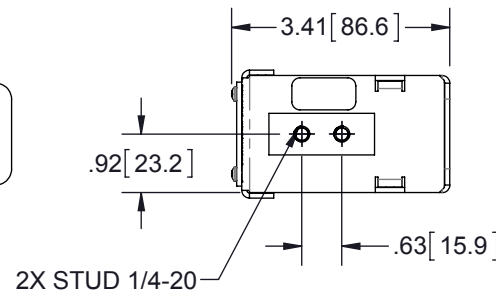
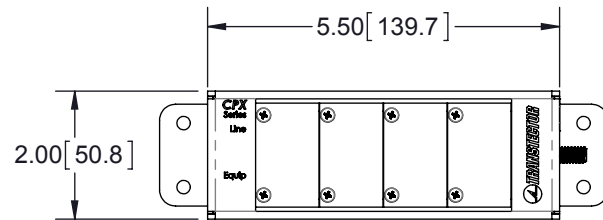


REVISIONS				
REV.	DESCRIPTION	ECN	DATE	APPROVED
A	PRODUCTION RELEASE	DD99000	1/16/13	KCP



MAXIMUM CHARACTERISTICS

Application:

Wall Mountable CPX Enclosure
Compatible with CPX Series Protection Modules for protection of T1E1, 10/100 Ethernet, 10/1000 Gigabit Ethernet, 10/100 PoE, and 48V dc power.

Mechanical:

Chassis Material: 14 gauge aluminum, beige powder coat
Dimensions: 2.00"H x 7.00"W x 3.41"D

Environmental:

Operating/Storage temperature: -40°C to +85°C (modules are spec'd to +85°C)
Relative Humidity: 99% (non-condensing)

Note:

The dedicated dual ground studs must be connected to a low impedance ground for proper operation of the protection modules.

Suppression modules not included.

Wall Mounting: 4 each #10 x 5/8 screws included.

CUSTOMER APPROVAL: _____ DATE: _____

ALL DIMENSIONS SHOWN ARE FOR REFERENCE ONLY.

THESE COMMODITIES, TECHNOLOGY OR SOFTWARE WERE EXPORTED FROM THE UNITED STATES IN ACCORDANCE WITH THE EXPORT ADMINISTRATION REGULATIONS. DIVERSION CONTRARY TO U.S. LAW PROHIBITED.

<small>UNLESS OTHERWISE SPECIFIED LEADING DIMENSIONS ARE INCHES DIMENSIONS IN [] ARE MILLIMETERS</small> <small>TOLERANCES: FRACTIONS=± 1/32 .XX=± .01 ANGLES=± 1° .XXX=± .005</small> <small>NOTICE: THE INFORMATION AND DESIGN IN THIS DOCUMENT IS THE PROPERTY OF TRANSECTOR SYSTEMS. ALL RIGHTS RESERVED.</small> <small>THIRD-ANGLE PROJECTION</small>	DRAWN	KCP	DATE	12/11/12			SHEET	1	OF	1
	ENG APPD	TOT	01/22/13				SCALE			1:3
	PRODUCT MGR	MLH	2/1/13				CPX WALL MOUNT 4 UNIT <small>CUSTOMER SPECIFICATION</small>			
	MARKETING APPD	LJ	2/4/13							
PROJECT NO. DD99000					SIZE	A	CAGE	30992	PROD CAT	DST
DOCUMENT NAME 1101-1137-C					PART NUMBER	1101-1137			REV	A