

FM-3100ENDO-OMNI-12

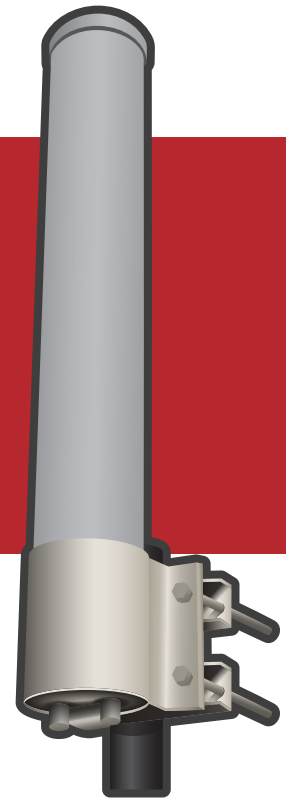
Fluidmesh 12dBi Omni Antenna for Mobility Applications

MOBILITY APPLICATIONS ANTENNA

The Fluidmesh 12dBi Omnidirectional Antenna for FM3100 ENDO combines vertical and horizontal polarization in a single element.

It is a professional quality antenna designed primarily for Mobility Applications in the 5.1-5.8 GHz frequency band.

This antenna incorporates an advanced dual polarization structure designed to work in conjunction with the Fluidmesh 3100 ENDO Radio. Specifically designed to operate with 2x2 MIMO radios, the antenna allows for attenuation of unwanted signals from adjacent channels or co-located equipment.



Features

- 2X2 MIMO Technology Compatible
- High Gain for maximum coverage
- Outdoor rated
- N-Female Connectors
- Comes with 2 in. pole mounting kit

Mechanical Specifications

| | |
|--------------------------------|-------------------------------------|
| Connectors | (2) Type N-Female |
| Dimensions (Diameter x Length) | Ø3.3 x 23.6 in (Ø84 x 600 mm) |
| Weight | 4.4 lbs (2.0 kg) |
| Radome Material | UV Resistance PVC |
| Mounting | Ø1.6 - Ø2.4 in (Ø40 - Ø60 mm) Masts |
| Rated Wind Velocity | 130mph (210km/h) |
| Wind Loading @ 100/125/150 mph | 20/31/44 lbs |
| Operating Temperature | -40°C - +65°C (-40°F - +149°C) |

Electrical Specifications

| | |
|-----------------------|-------------------------------|
| Frequency | 5150-5850 MHz |
| Gain | 13 dBi |
| VSWR | < 2.0:1 |
| Polarization | Horizontal and Vertical |
| Horizontal Beam Width | 360° |
| Isolation | > 30 dB |
| Cross-polar Ratio | > 20 dB |
| Nominal Impedance | 50 Ohms |
| Max. Input Power | 100W |
| Lightning Protection | DC Ground (Vertical Pol Only) |

Antenna Pattern

