

Fill Ratio is the percentage of Usable Area filled by cables including the gaps between cables. Fill for double-sided (DS) cable managers is listed in two rows (Front/Rear).

Estimated Cable Fill Capacities for CPI Cable Management and Pathway Products

Part Number	Description	Cable Manager Specs.			Cable OD (in.) Fill Ratio	Recommended Cable Fill			Maximum Cable Fill		
		Interior Width (in.)	Interior Depth (in.)	Usable Area (sq. in.)		Cat 5e	Cat 6	Cat 6a	Cat 5e	Cat 6	Cat 6a
						0.200	0.250	0.300	0.200	0.250	0.300
Vertical Cable Managers for Racks											
11374-XXX	SS Wide Vertical Cable Sect, 6"W	5.6	6.0	33.6		267	171	119	535	342	238
11378-X02	Extension, SS Nar Vert Cable Sect, 2'H x 3.65"W	3.5	6.0	21.0		167	107	74	334	214	149
11378-X01	Extension, SS Wide Vert Cable Sect, 2'H x 6"W	5.6	6.0	33.6		267	171	119	535	342	238
11584-X02	Extension, SS Nar Vert Cable Sect, 1'H x 3.65"W	3.5	6.0	21.0		167	107	74	334	214	149
11584-X01	Extension, SS Wide Vert Cable Sect, 1'H x 6"W	5.6	6.0	33.6		267	171	119	535	342	238
11729-XXX	DS Wide Vertical Cable Sect, 6"W (Front/Rear)	5.7	6.0	34.2	Front	272	174	121	544	348	242
		5.7	6.0	34.2	Rear	272	174	121	544	348	242
11730-XXX	SS Narrow Vertical Cable Section, 3.65"W	3.5	6.0	21.0		167	107	74	334	214	149
11781-X02	Extension, DS Nar Vert Cable Sect, 1'H x 3.65"W (Front/Rear)	3.5	6.0	21.0	Front	167	107	74	334	214	149
		3.5	6.0	21.0	Rear	167	107	74	334	214	149
11781-X01	Extension, DS Wide Vert Cable Sect, 1'H x 6"W (Front/Rear)	5.7	6.0	34.2	Front	272	174	121	544	348	242
		5.7	6.0	34.2	Rear	272	174	121	544	348	242
11782-X02	Extension, DS Nar Vert Cable Sect, 2'H x 3.65"W (Front/Rear)	3.5	6.0	21.0	Front	167	107	74	334	214	149
		3.5	6.0	21.0	Rear	167	107	74	334	214	149
11782-X01	Extension, DS Wide Vert Cable Sect, 2'H x 6"W (Front/Rear)	5.7	6.0	34.2	Front	272	174	121	544	348	242
		5.7	6.0	34.2	Rear	272	174	121	544	348	242
12096-XXX	DS Narrow Vertical Cable Sect, 3.65"W (Front/Rear)	3.5	6.0	21.0	Front	167	107	74	334	214	149
		3.5	6.0	21.0	Rear	167	107	74	334	214	149
13901-7XX	Velocity Single-Sided Vertical Cable Manager, 3.6"W x 9.7"D	Varies	7.5	18.5		147	94	65	294	188	131
13902-7XX	Velocity Single-Sided Vertical Cable Manager, 6"W x 9.8"D	Varies	7.5	37.0		294	188	131	589	377	262
13904-7XX	Velocity Single-Sided Vertical Cable Manager, 10"W x 10.3"D	Varies	7.5	67.7		539	345	239	1077	690	479
13905-7XX	Velocity Single-Sided Vertical Cable Manager, 12"W x 10.4"D	Varies	7.5	83.1		661	423	294	1323	846	588
13911-7XX	Velocity Double-Sided Vertical Cable Manager, 3.6"W x 16.4"D	Varies	7.5	18.5	Front	147	94	65	294	188	131
		Varies	5.5	13.7	Rear	109	70	48	218	140	97
13912-7XX	Velocity Double-Sided Vertical Cable Manager, 6"W x 16.6"D	Varies	7.5	37.0	Front	294	188	131	589	377	262
		Varies	5.5	27.2	Rear	216	139	96	433	277	192
13914-7XX	Velocity Double-Sided Vertical Cable Manager, 10"W x 17.5"D	Varies	7.5	67.7	Front	539	345	239	1077	690	479
		Varies	5.5	49.7	Rear	395	253	176	791	506	352
13915-7XX	Velocity Double-Sided Vertical Cable Manager, 12"W x 17.8"D	Varies	7.5	83.1	Front	661	423	294	1323	846	588
		Varies	5.5	60.9	Rear	485	310	215	969	620	431

Fill Ratio is the percentage of Usable Area filled by cables including the gaps between cables. Fill for double-sided (DS) cable managers is listed in two rows (Front/Rear).

Estimated Cable Fill Capacities for CPI Cable Management and Pathway Products

Part Number	Description	Cable Manager Specs.			Cable OD (in.) Fill Ratio	Recommended Cable Fill			Maximum Cable Fill		
		Interior Width (in.)	Interior Depth (in.)	Usable Area (sq. in.)		Cat 5e	Cat 6	Cat 6a	Cat 5e	Cat 6	Cat 6a
						0.200	0.250	0.300	0.200	0.250	0.300
13934-71X	Velocity Cable Ring Kits, 3.6"W	3.4	6.8	23.1		184	118	82	368	235	163
13934-72X	Velocity Cable Ring Kits, 6"W	5.8	6.8	39.4		314	201	139	627	401	279
13934-74X	Velocity Cable Ring Kits, 10"W	9.8	6.8	66.6		530	339	236	1060	678	471
13934-75X	Velocity Cable Ring Kits, 12"W	11.8	6.8	80.2		638	408	284	1276	817	567
30091-XXX	SS MCS Master Cabling Section, 4.4"W	Varies	6.7	24.4		194	124	86	388	249	173
30092-XXX	SS MCS Master Cabling Section, 6"W	Varies	6.7	35.2		280	179	124	560	359	249
30093-XXX	SS MCS Master Cabling Section, 10"W	Varies	6.7	62.3		496	317	220	992	635	441
30094-XXX	DS MCS Master Cabling Section, 4.4"W (Front/Rear)	Varies	6.7	24.2	Front	193	123	86	385	246	171
		Varies	6.7	24.2	Rear	193	123	86	385	246	171
30095-XXX	DS MCS Master Cabling Section, 6"W (Front/Rear)	Varies	6.7	35.1	Front	279	179	124	559	358	248
		Varies	6.7	35.1	Rear	279	179	124	559	358	248
30096-XXX	DS MCS Master Cabling Section, 10"W (Front/Rear)	Varies	6.7	62.3	Front	496	317	220	992	635	441
		Varies	6.7	62.3	Rear	496	317	220	992	635	441
30161-7XX	CCS Combination Cabling Section for 3"D Rack, 3.65"W (Front/Rear/Total)	3.2	5.2	16.6	Front	132	85	59	264	169	117
		3.2	5.2	16.6	Rear	132	85	59	264	169	117
30162-7XX	CCS Combination Cabling Section for 3"D Rack, 6"W (Front/Rear/Total)	5.6	5.2	29.1	Front	232	148	103	463	296	206
		5.6	5.2	29.1	Rear	232	148	103	463	296	206
30163-7XX	CCS Combination Cabling Section for 3"D Rack, 10"W (Front/Rear/Total)	9.6	5.2	49.9	Front	397	254	176	794	508	353
		9.6	5.2	49.9	Rear	397	254	176	794	508	353
30164-7XX	CCS Combination Cabling Section for 6"D Rack, 3.65"W (Front/Rear/Total)	3.2	6.7	21.4	Front	170	109	76	341	218	151
		3.2	6.0	19.2	Rear	153	98	68	306	196	136
30165-7XX	CCS Combination Cabling Section for 6"D Rack, 6"W (Front/Rear/Total)	5.6	6.7	37.5	Front	298	191	133	597	382	265
		5.6	6.0	33.6	Rear	267	171	119	535	342	238
30166-7XX	CCS Combination Cabling Section for 6"D Rack, 10"W (Front/Rear/Total)	9.6	6.7	64.3	Front	512	327	227	1023	655	455
		9.6	6.0	57.6	Rear	458	293	204	917	587	407
35475-701	Evolution Fiber Segregation Kit	2.4	4.0	9.6		76	49	34	153	98	68
35511-7XX	Evolution g1 Single-Sided Vertical Cable Manager, 6"W x 13.2"D	Varies	10.6	49.5		394	252	175	788	504	350
35512-7XX	Evolution g1 Single-Sided Vertical Cable Manager, 8"W x 13.2"D	Varies	10.6	70.6		562	360	250	1124	719	499
35513-7XX	Evolution g1 Single-Sided Vertical Cable Manager, 10"W x 13.2"D	Varies	10.6	91.7		730	467	324	1459	934	649
35514-7XX	Evolution g1 Single-Sided Vertical Cable Manager, 12"W x 13.2"D	Varies	10.6	112.9		898	575	399	1797	1150	799
35515-7XX	Evolution g1 Single-Sided Vertical Cable Manager, 15"W x 13.2"D	Varies	10.6	144.6		1151	736	511	2301	1473	1023

Fill Ratio is the percentage of Usable Area filled by cables including the gaps between cables. Fill for double-sided (DS) cable managers is listed in two rows (Front/Rear).

Estimated Cable Fill Capacities for CPI Cable Management and Pathway Products

Part Number	Description	Cable Manager Specs.			Cable OD (in.) Fill Ratio	Recommended Cable Fill			Maximum Cable Fill		
		Interior Width (in.)	Interior Depth (in.)	Usable Area (sq. in.)		Cat 5e	Cat 6	Cat 6a	Cat 5e	Cat 6	Cat 6a
						0.200	0.250	0.300	0.200	0.250	0.300
					50%	50%	50%	100%	100%	100%	
35521-7XX	Evolution g2 Double-Sided Vertical Cable Manager, 6"W x 24.5"D, (40%, 50%, 60% of Front/Rear)	Varies	7.5	36.9	40%	294	188	131	587	376	261
		Varies	10.1	46.1	50%	367	235	163	734	470	326
		Varies	12.6	55.4	60%	441	282	196	882	564	392
35522-7XX	Evolution g2 Double-Sided Vertical Cable Manager, 8"W x 24.5"D, (40%, 50%, 60% of Front/Rear)	Varies	7.5	53.0	40%	422	270	187	844	540	375
		Varies	10.1	66.3	50%	528	338	234	1055	675	469
		Varies	12.6	79.6	60%	633	405	282	1267	811	563
35523-7XX	Evolution g2 Double-Sided Vertical Cable Manager, 10"W x 24.5"D, (40%, 50%, 60% of Front/Rear)	Varies	7.5	69.2	40%	551	352	245	1101	705	489
		Varies	10.1	86.4	50%	688	440	306	1375	880	611
		Varies	12.6	103.7	60%	825	528	367	1650	1056	734
35524-7XX	Evolution g2 Double-Sided Vertical Cable Manager, 12"W x 24.5"D, (40%, 50%, 60% of Front/Rear)	Varies	7.5	85.3	40%	679	434	302	1358	869	603
		Varies	10.1	106.6	50%	848	543	377	1697	1086	754
		Varies	12.6	127.9	60%	1018	651	452	2036	1303	905
35525-7XX	Evolution g2 Double-Sided Vertical Cable Manager, 15"W x 24.5"D, (40%, 50%, 60% of Front/Rear)	Varies	7.5	109.4	40%	871	557	387	1741	1114	774
		Varies	10.1	136.8	50%	1089	697	484	2177	1393	968
		Varies	12.6	164.2	60%	1307	836	581	2613	1673	1161
35571-70X	Evolution g3 Combination Cable Manager, 6"W x 20.2"D	Varies	10.1	49.5	Front	394	252	175	788	504	350
		5.5	5.9	32.4	Rear	258	165	115	516	330	229
35572-70X	Evolution g3 Combination Cable Manager, 8"W x 20.2"D	Varies	10.1	70.6	Front	562	360	250	1124	719	499
		7.5	5.9	44.2	Rear	352	225	156	703	450	313
35573-70X	Evolution g3 Combination Cable Manager, 10"W x 20.2"D	Varies	10.1	91.7	Front	730	467	324	1459	934	649
		9.5	5.9	56.0	Rear	446	285	198	891	570	396
35574-70X	Evolution g3 Combination Cable Manager, 12"W x 20.2"D	Varies	10.1	112.9	Front	898	575	399	1797	1150	799
		11.5	5.9	67.8	Rear	540	345	240	1079	691	480
35575-70X	Evolution g3 Combination Cable Manager, 15"W x 20.2"D	Varies	10.1	144.6	Front	1151	736	511	2301	1473	1023
		14.5	5.9	85.5	Rear	680	435	302	1361	871	605
40092-XXX	SS MCS-EFX Master Cabling Section With Extended Fingers, 6"W	Varies	9.3	46.1		367	235	163	734	470	326
40093-XXX	SS MCS-EFX Master Cabling Section With Extended Fingers, 10"W	Varies	9.3	83.4		664	425	295	1327	850	590
40094-XXX	SS MCS-EFX Master Cabling Section With Extended Fingers, 12"W	Varies	9.3	102.0		812	519	361	1623	1039	722
40095-XXX	DS MCS-EFX Master Cabling Section with Extended Fingers, 6"W (Front/Rear/Total)	Varies	9.3	46.8	Front	372	238	166	745	477	331
		Varies	9.3	46.8	Rear	372	238	166	745	477	331
40096-XXX	DS MCS-EFX Master Cabling Section with Extended Fingers, 10"W (Front/Rear/Total)	Varies	9.3	84.1	Front	669	428	297	1338	857	595
		Varies	9.3	84.1	Rear	669	428	297	1338	857	595

Fill Ratio is the percentage of Usable Area filled by cables including the gaps between cables. Fill for double-sided (DS) cable managers is listed in two rows (Front/Rear).

Estimated Cable Fill Capacities for CPI Cable Management and Pathway Products

Part Number	Description	Cable Manager Specs.			Cable OD (in.) Fill Ratio	Recommended Cable Fill			Maximum Cable Fill		
		Interior Width (in.)	Interior Depth (in.)	Usable Area (sq. in.)		Cat 5e	Cat 6	Cat 6a	Cat 5e	Cat 6	Cat 6a
						0.200	0.250	0.300	0.200	0.250	0.300
40097-XXX	DS MCS-ETX Master Cabling Section with Extended Fingers, 12"W (Front/Rear/Total)	Varies	9.3	102.8	Front	818	524	364	1636	1047	727
		Varies	9.3	102.8	Rear	818	524	364	1636	1047	727
40098-7XX	CCS - ETX Combination Cabling Section with Extended Fingers for 3"D Rack, 6"W (Front/Rear/Total)	5.4	7.8	42.1	Front	335	214	149	670	429	298
		5.6	5.2	29.1	Rear	232	148	103	463	296	206
40099-7XX	CCS - ETX Combination Cabling Section with Extended Fingers for 3"D Rack, 10"W (Front/Rear/Total)	9.4	7.8	73.3	Front	583	373	259	1167	747	518
		9.6	5.2	49.9	Rear	397	254	176	794	508	353
40100-7XX	CCS - ETX Combination Cabling Section with Extended Fingers for 3"D Rack, 12"W (Front/Rear/Total)	11.4	7.8	88.9	Front	707	453	314	1415	906	629
		11.6	5.2	60.3	Rear	480	307	213	960	614	427
55100-703	High Density Patching Frame, per side (Front/Rear)	2.3	5.5	12.6	Front	100	64	45	201	128	89
		3.2	11.3	36.1	Rear	287	184	128	575	368	255
57011-703	Velocity Standard Pack with a Single-Sided Vertical Cable Manager, 3.6"W x 9.7"D	Varies	7.5	18.5		147	94	65	294	188	131
57012-703	Velocity Standard Pack with a Double-Sided Vertical Cable Manager, 3.6"W x 16.4"D	Varies	7.5	18.5	Front	147	94	65	294	188	131
		Varies	5.5	13.7	Rear	109	70	48	218	140	97
57013-703	Velocity Standard Pack with a Single-Sided Vertical Cable Manager, 6"W x 9.8"D	Varies	7.5	37.0		294	188	131	589	377	262
57014-703	Velocity Standard Pack with a Double-Sided Vertical Cable Manager, 6"W x 16.6"D	Varies	7.5	37.0	Front	294	188	131	589	377	262
		Varies	5.5	27.2	Rear	216	139	96	433	277	192
Vertical Cable Managers for Cabinet Enclosures											
11809-XXX	SlimFrame Vertical Cable Ring Manager	0.9	3.3	2.9		23	15	10	46	30	21
12465-XXX	MegaFrame Vertical Cable Ring Sect	2.3	5.5	12.6		100	64	45	201	128	89
13170-XXX	Enhanced MegaFrame Vertical Cbl Mgr, Wide	3.9	8.3	32.3		257	165	114	514	329	228
13171-XXX	Enhanced MegaFrame Vertical Cbl Mgr, Narrow	2.3	4.8	11.0		88	56	39	175	112	78
13485-XXX	Vertical Cable Manager for Cube-iT PLUS	2.7	4.8	12.9		103	66	46	205	131	91
16272-C02	TeraFrame HD Cable Lashing Bar, 42U	1.5	1 x 1.5" Ø	1.7		14	9	6	27	17	12
16272-C05	TeraFrame HD Cable Lashing Bar, 45U	1.5	1 x 1.5" Ø	1.7		14	9	6	27	17	12
16272-C07	TeraFrame HD Cable Lashing Bar, 47U	1.5	1 x 1.5" Ø	1.7		14	9	6	27	17	12
16273-C02	TeraFrame HD Cable Lashing Bracket, 42U	5.1	3 x 1.5" Ø	5.1		41	26	18	81	52	36
16273-C05	TeraFrame HD Cable Lashing Bracket, 45U	5.1	3 x 1.5" Ø	5.1		41	26	18	81	52	36
16273-C07	TeraFrame HD Cable Lashing Bracket, 47U	5.1	3 x 1.5" Ø	5.1		41	26	18	81	52	36
16275-C02	TeraFrame HD Vertical Cable Ring Manager, 42U	0.9	3.3	2.9		23	15	10	46	30	21
16275-C05	TeraFrame HD Vertical Cable Ring Manager, 45U	0.9	3.3	2.9		23	15	10	46	30	21
16275-C07	TeraFrame HD Vertical Cable Ring Manager, 47U	0.9	3.3	2.9		23	15	10	46	30	21
25102-700	GlobalFrame, Cable Ring Manager, with Large Cable Rings, for 42U x 800 mm W cabinets	4.2	8.6	36.1		287	184	128	575	368	255

Fill Ratio is the percentage of Usable Area filled by cables including the gaps between cables. Fill for double-sided (DS) cable managers is listed in two rows (Front/Rear).

Estimated Cable Fill Capacities for CPI Cable Management and Pathway Products

Part Number	Description	Cable Manager Specs.			Cable OD (in.) Fill Ratio	Recommended Cable Fill			Maximum Cable Fill		
		Interior Width (in.)	Interior Depth (in.)	Usable Area (sq. in.)		Cat 5e	Cat 6	Cat 6a	Cat 5e	Cat 6	Cat 6a
						0.200	0.250	0.300	0.200	0.250	0.300
						50%	50%	50%	100%	100%	100%
25102-701	GlobalFrame, Cable Ring Manager, with Large Cable Rings, for 45U x 800 mm W cabinets	4.2	8.6	36.1		287	184	128	575	368	255
25102-702	GlobalFrame, Cable Ring Manager, with Large Cable Rings, for 48U x 800 mm W cabinets	4.2	8.6	36.1		287	184	128	575	368	255
25102-703	GlobalFrame, Cable Ring Manager, with Medium Cable Rings, for 42U x 800 mm W cabinets	4.2	3.5	14.7		117	75	52	234	150	104
25102-704	GlobalFrame, Cable Ring Manager, with Medium Cable Rings, for 45U x 800 mm W cabinets	4.2	3.5	14.7		117	75	52	234	150	104
25102-705	GlobalFrame, Cable Ring Manager, with Medium Cable Rings, for 48U x 800 mm W cabinets	4.2	3.5	14.7		117	75	52	234	150	104
25103-700	GlobalFrame, Cable Ring Manager, with Large Cable Rings, for 42U x 750 mm W cabinets	3.2	8.6	27.5		219	140	97	438	280	195
25103-701	GlobalFrame, Cable Ring Manager, with Large Cable Rings, for 45U x 750 mm W cabinets	3.2	8.6	27.5		219	140	97	438	280	195
25103-702	GlobalFrame, Cable Ring Manager, with Large Cable Rings, for 48U x 750 mm W cabinets	3.2	8.6	27.5		219	140	97	438	280	195
25103-703	GlobalFrame, Cable Ring Manager, with Medium Cable Rings, for 42U x 750 mm W cabinets	3.2	3.5	11.2		89	57	40	178	114	79
25103-704	GlobalFrame, Cable Ring Manager, with Medium Cable Rings, for 45U x 750 mm W cabinets	3.2	3.5	11.2		89	57	40	178	114	79
25103-705	GlobalFrame, Cable Ring Manager, with Medium Cable Rings, for 48U x 750 mm W cabinets	3.2	3.5	11.2		89	57	40	178	114	79
25104-001	GlobalFrame, Cable Ring Kit, for 600 mm W cabinets	1.0	4.4	4.4		35	22	16	70	45	31
25105-001	GlobalFrame, Cable Ring Kit, with Large Cable Rings, for 750 mm W cabinets	3.2	8.6	27.5		219	140	97	438	280	195
25105-002	GlobalFrame, Cable Ring Kit, with Medium Cable Rings, for 750 mm W cabinets	3.2	3.5	11.2		89	57	40	178	114	79
25106-001	GlobalFrame, Cable Ring Kit, with Large Cable Rings, for 800 mm W cabinets	4.2	8.6	36.1		287	184	128	575	368	255
25106-002	GlobalFrame, Cable Ring Kit, with Medium Cable Rings, for 800 mm W cabinets	4.2	3.5	14.7		117	75	52	234	150	104
25107-001	GlobalFrame, Snap-In Grommet Kit, 1 grommet	3.2	5.5	17.6		140	90	62	280	179	124
25108-001	GlobalFrame, Snap-In Grommet & Plug Kit, 1 grommet	3.2	5.5	17.6		140	90	62	280	179	124
25110-700	GlobalFrame, Vertical Cable Manager, with Standard Fingers, for 42U x 600 mm W Cabinets	1.0	6.1	6.1		49	31	22	97	62	43

Fill Ratio is the percentage of Usable Area filled by cables including the gaps between cables. Fill for double-sided (DS) cable managers is listed in two rows (Front/Rear).

Estimated Cable Fill Capacities for CPI Cable Management and Pathway Products

Part Number	Description	Cable Manager Specs.			Cable OD (in.) Fill Ratio	Recommended Cable Fill			Maximum Cable Fill		
		Interior Width (in.)	Interior Depth (in.)	Usable Area (sq. in.)		Cat 5e	Cat 6	Cat 6a	Cat 5e	Cat 6	Cat 6a
						0.200	0.250	0.300	0.200	0.250	0.300
						50%	50%	50%	100%	100%	100%
25110-701	GlobalFrame, Vertical Cable Manager, with Standard Fingers, for 45U x 600 mm W cabinets	1.0	6.1	6.1		49	31	22	97	62	43
25110-702	GlobalFrame, Vertical Cable Manager, with Standard Fingers, for 48U x 600 mm W cabinets	1.0	6.1	6.1		49	31	22	97	62	43
25120-703	GlobalFrame, Vertical Cable Manager, with Extended Fingers, for 42U x 750 mm W cabinets	3.8	8.5	32.3		257	165	114	514	329	228
25120-704	GlobalFrame, Vertical Cable Manager, with Extended Fingers, for 45U x 750 mm W cabinets	3.8	8.5	32.3		257	165	114	514	329	228
25120-705	GlobalFrame, Vertical Cable Manager, with Extended Fingers, for 48U x 750 mm W cabinets	3.8	8.5	32.3		257	165	114	514	329	228
25120-706	GlobalFrame, Vertical Cable Manager, with Extended Fingers, for 42U x 800 mm W cabinets	4.8	8.5	40.8		325	208	144	649	416	289
25120-707	GlobalFrame, Vertical Cable Manager, with Extended Fingers, for 45U x 800 mm W cabinets	4.8	8.5	40.8		325	208	144	649	416	289
25120-708	GlobalFrame, Vertical Cable Manager, with Extended Fingers, 48U x 800 mm	4.8	8.5	40.8		325	208	144	649	416	289
25190-001	GlobalFrame, Cable Port Brush Kit, 1 brush kit	3.9	8.8	34.3		273	175	121	546	349	243
25221-701	GlobalFrame, Cable Lashing Bracket Kit, 42U x 125 mm W	5.0	2.0	10.0		80	51	35	159	102	71
25221-702	GlobalFrame, Cable Lashing Bracket Kit, 42U x 250 mm W	10.0	2.0	20.0		159	102	71	318	204	141
25221-703	GlobalFrame, Cable Lashing Bracket Kit, 45U x 125 mm W	5.0	2.0	10.0		80	51	35	159	102	71
25221-704	GlobalFrame, Cable Lashing Bracket Kit, 45U x 250 mm W	10.0	2.0	20.0		159	102	71	318	204	141
25221-705	GlobalFrame, Cable Lashing Bracket Kit, 48U x 125 mm W	5.0	2.0	10.0		80	51	35	159	102	71
25221-706	GlobalFrame, Cable Lashing Bracket Kit, 48U x 250 mm W	10.0	2.0	20.0		159	102	71	318	204	141
25402-700	GlobalFrame GT, Cable Ring Manager, with Large Cable Rings, for 42U x 800 mm cabinet	4.2	8.6	36.1		287	184	128	575	368	255
25402-701	GlobalFrame GT, Cable Ring Manager, with Medium Cable Rings, for 42U x 800 mm cabinet	4.2	3.5	14.7		117	75	52	234	150	104
25403-701	GlobalFrame GT, Cable Lashing Bracket, 42U x 125 mm	5.0	2.0	10.0		80	51	35	159	102	71
25404-703	GlobalFrame, Vertical Cable Manager, with Standard Fingers, for 42U x 750 mm W cabinets	3.8	6.1	23.1		184	118	82	368	235	163
25404-704	GlobalFrame, Vertical Cable Manager, with Standard Fingers, for 45U x 750 mm W cabinets	3.8	6.1	23.1		184	118	82	368	235	163
25404-705	GlobalFrame, Vertical Cable Manager, with Standard Fingers, for 48U x 750 mm W cabinets	3.8	6.1	23.1		184	118	82	368	235	163
25404-706	GlobalFrame, Vertical Cable Manager, with Standard Fingers, for 42U x 800 mm W cabinets	4.8	6.1	29.2		232	149	103	465	297	207

Fill Ratio is the percentage of Usable Area filled by cables including the gaps between cables. Fill for double-sided (DS) cable managers is listed in two rows (Front/Rear).

Estimated Cable Fill Capacities for CPI Cable Management and Pathway Products

Part Number	Description	Cable Manager Specs.			Cable OD (in.) Fill Ratio	Recommended Cable Fill			Maximum Cable Fill		
		Interior Width (in.)	Interior Depth (in.)	Usable Area (sq. in.)		Cat 5e	Cat 6	Cat 6a	Cat 5e	Cat 6	Cat 6a
						0.200	0.250	0.300	0.200	0.250	0.300
					50%	50%	50%	100%	100%	100%	
25404-707	GlobalFrame, Vertical Cable Manager, with Standard Fingers, for 45U x 800 mm W cabinets	4.8	6.1	29.2		232	149	103	465	297	207
25404-708	GlobalFrame, Vertical Cable Manager, with Standard Fingers, 48U x 800 mm	4.8	6.1	29.2		232	149	103	465	297	207
34416-C01	TeraFrame, Vert Cbl Mgr, Standard, 24U x 600 mm W	Varies	9.3	7.1		56	36	25	113	72	50
34417-C01	TeraFrame, Vert Cbl Mgr, Standard, 36U x 600 mm W	Varies	9.3	7.1		56	36	25	113	72	50
34418-C01	TeraFrame, Vert Cbl Mgr, Standard, 42U x 600 mm W	Varies	9.3	7.1		56	36	25	113	72	50
34419-C01	TeraFrame, Vert Cbl Mgr, Standard, 43U x 600 mm W	Varies	9.3	7.1		56	36	25	113	72	50
34420-C01	TeraFrame, Vert Cbl Mgr, Standard, 44U x 600 mm W	Varies	9.3	7.1		56	36	25	113	72	50
34421-C01	TeraFrame, Vert Cbl Mgr, Standard, 45U x 600 mm W	Varies	9.3	7.1		56	36	25	113	72	50
34422-C01	TeraFrame, Vert Cbl Mgr, Standard, 46U x 600 mm W	Varies	9.3	7.1		56	36	25	113	72	50
34423-C01	TeraFrame, Vert Cbl Mgr, Standard, 47U x 600 mm W	Varies	9.3	7.1		56	36	25	113	72	50
34424-C01	TeraFrame, Vert Cbl Mgr, Standard, 48U x 600 mm W	Varies	9.3	7.1		56	36	25	113	72	50
34425-C01	TeraFrame, Vert Cbl Mgr, Standard, 49U x 600 mm W	Varies	9.3	7.1		56	36	25	113	72	50
34426-C01	TeraFrame, Vert Cbl Mgr, Standard, 50U x 600 mm W	Varies	9.3	7.1		56	36	25	113	72	50
34427-C01	TeraFrame, Vert Cbl Mgr, Standard, 51U x 600 mm W	Varies	9.3	7.1		56	36	25	113	72	50
35087-C00	TeraFrame Cable Lashing Bracket, 24U	5.1	3 x 1.5" Ø	5.1		41	26	18	81	52	36
35087-C01	TeraFrame Cable Lashing Bracket, 36U	5.1	3 x 1.5" Ø	5.1		41	26	18	81	52	36
35087-C02	TeraFrame Cable Lashing Bracket, 42U	5.1	3 x 1.5" Ø	5.1		41	26	18	81	52	36
35087-C03	TeraFrame Cable Lashing Bracket, 43U	5.1	3 x 1.5" Ø	5.1		41	26	18	81	52	36
35087-C04	TeraFrame Cable Lashing Bracket, 44U	5.1	3 x 1.5" Ø	5.1		41	26	18	81	52	36
35087-C05	TeraFrame Cable Lashing Bracket, 45U	5.1	3 x 1.5" Ø	5.1		41	26	18	81	52	36
35087-C06	TeraFrame Cable Lashing Bracket, 46U	5.1	3 x 1.5" Ø	5.1		41	26	18	81	52	36
35087-C07	TeraFrame Cable Lashing Bracket, 47U	5.1	3 x 1.5" Ø	5.1		41	26	18	81	52	36
35087-C08	TeraFrame Cable Lashing Bracket, 48U	5.1	3 x 1.5" Ø	5.1		41	26	18	81	52	36
35087-C09	TeraFrame Cable Lashing Bracket, 49U	5.1	3 x 1.5" Ø	5.1		41	26	18	81	52	36
35087-C10	TeraFrame Cable Lashing Bracket, 50U	5.1	3 x 1.5" Ø	5.1		41	26	18	81	52	36
35087-C11	TeraFrame Cable Lashing Bracket, 51U	5.1	3 x 1.5" Ø	5.1		41	26	18	81	52	36
35090-C00	TeraFrame, Vert Cbl Mgr, Standard, 24U x 700 mm W	Varies	11.0	27.0		215	138	95	430	275	191
35090-C01	TeraFrame, Vert Cbl Mgr, Standard, 36U x 700 mm W	Varies	11.0	27.0		215	138	95	430	275	191
35090-C02	TeraFrame, Vert Cbl Mgr, Standard, 42U x 700 mm W	Varies	11.0	27.0		215	138	95	430	275	191
35090-C03	TeraFrame, Vert Cbl Mgr, Standard, 43U x 700 mm W	Varies	11.0	27.0		215	138	95	430	275	191
35090-C04	TeraFrame, Vert Cbl Mgr, Standard, 44U x 700 mm W	Varies	11.0	27.0		215	138	95	430	275	191
35090-C05	TeraFrame, Vert Cbl Mgr, Standard, 45U x 700 mm W	Varies	11.0	27.0		215	138	95	430	275	191
35090-C06	TeraFrame, Vert Cbl Mgr, Standard, 46U x 700 mm W	Varies	11.0	27.0		215	138	95	430	275	191
35090-C07	TeraFrame, Vert Cbl Mgr, Standard, 47U x 700 mm W	Varies	11.0	27.0		215	138	95	430	275	191

Fill Ratio is the percentage of Usable Area filled by cables including the gaps between cables. Fill for double-sided (DS) cable managers is listed in two rows (Front/Rear).

Estimated Cable Fill Capacities for CPI Cable Management and Pathway Products

Part Number	Description	Cable Manager Specs.			Cable OD (in.) Fill Ratio	Recommended Cable Fill			Maximum Cable Fill		
		Interior Width (in.)	Interior Depth (in.)	Usable Area (sq. in.)		Cat 5e	Cat 6	Cat 6a	Cat 5e	Cat 6	Cat 6a
						0.200	0.250	0.300	0.200	0.250	0.300
35090-C08	TeraFrame, Vert Cbl Mgr, Standard, 48U x 700 mm W	Varies	11.0	27.0		215	138	95	430	275	191
35090-C09	TeraFrame, Vert Cbl Mgr, Standard, 49U x 700 mm W	Varies	11.0	27.0		215	138	95	430	275	191
35090-C10	TeraFrame, Vert Cbl Mgr, Standard, 50U x 700 mm W	Varies	11.0	27.0		215	138	95	430	275	191
35090-C11	TeraFrame, Vert Cbl Mgr, Standard, 51U x 700 mm W	Varies	11.0	27.0		215	138	95	430	275	191
35095-C00	TeraFrame, Vert Cbl Mgr, Standard, 24U x 800 mm W	Varies	11.0	46.0		366	234	163	732	469	325
35095-C01	TeraFrame, Vert Cbl Mgr, Standard, 36U x 800 mm W	Varies	11.0	46.0		366	234	163	732	469	325
35095-C02	TeraFrame, Vert Cbl Mgr, Standard, 42U x 800 mm W	Varies	11.0	46.0		366	234	163	732	469	325
35095-C03	TeraFrame, Vert Cbl Mgr, Standard, 43U x 800 mm W	Varies	11.0	46.0		366	234	163	732	469	325
35095-C04	TeraFrame, Vert Cbl Mgr, Standard, 44U x 800 mm W	Varies	11.0	46.0		366	234	163	732	469	325
35095-C05	TeraFrame, Vert Cbl Mgr, Standard, 45U x 800 mm W	Varies	11.0	46.0		366	234	163	732	469	325
35095-C06	TeraFrame, Vert Cbl Mgr, Standard, 46U x 800 mm W	Varies	11.0	46.0		366	234	163	732	469	325
35095-C07	TeraFrame, Vert Cbl Mgr, Standard, 47U x 800 mm W	Varies	11.0	46.0		366	234	163	732	469	325
35095-C08	TeraFrame, Vert Cbl Mgr, Standard, 48U x 800 mm W	Varies	11.0	46.0		366	234	163	732	469	325
35095-C09	TeraFrame, Vert Cbl Mgr, Standard, 49U x 800 mm W	Varies	11.0	46.0		366	234	163	732	469	325
35095-C10	TeraFrame, Vert Cbl Mgr, Standard, 50U x 800 mm W	Varies	11.0	46.0		366	234	163	732	469	325
35095-C11	TeraFrame, Vert Cbl Mgr, Standard, 51U x 800 mm W	Varies	11.0	46.0		366	234	163	732	469	325
35100-C01	TeraFrame, Vert Cbl Ring Mgr, Small, 36U	0.9	3.3	2.9		23	15	10	46	30	21
35100-C02	TeraFrame, Vert Cbl Ring Mgr, Small, 42U	0.9	3.3	2.9		23	15	10	46	30	21
35100-C03	TeraFrame, Vert Cbl Ring Mgr, Small, 43/44U	0.9	3.3	2.9		23	15	10	46	30	21
35100-C05	TeraFrame, Vert Cbl Ring Mgr, Small, 45/46U	0.9	3.3	2.9		23	15	10	46	30	21
35100-C07	TeraFrame, Vert Cbl Ring Mgr, Small, 47/48U	0.9	3.3	2.9		23	15	10	46	30	21
35100-C09	TeraFrame, Vert Cbl Ring Mgr, Small, 49/50U	0.9	3.3	2.9		23	15	10	46	30	21
35100-C11	TeraFrame, Vert Cbl Ring Mgr, Small, 51U	0.9	3.3	2.9		23	15	10	46	30	21
35101-C01	TeraFrame, Vert Cbl Ring Mgr, Large, 36U x 700/800 mm W	2.3	5.5	12.6		100	64	45	201	128	89
35101-C02	TeraFrame, Vert Cbl Ring Mgr, Large, 42U x 700/800 mm W	2.3	5.5	12.6		100	64	45	201	128	89
35101-C03	TeraFrame, Vert Cbl Ring Mgr, Large, 43/44U x 700/800 mm W	2.3	5.5	12.6		100	64	45	201	128	89
35101-C05	TeraFrame, Vert Cbl Ring Mgr, Large, 45/46U x 700/800 mm W	2.3	5.5	12.6		100	64	45	201	128	89
35101-C07	TeraFrame, Vert Cbl Ring Mgr, Large, 47/48U x 700/800 mm W	2.3	5.5	12.6		100	64	45	201	128	89
35101-C09	TeraFrame, Vert Cbl Ring Mgr, Large, 49/50U x 700/800 mm W	2.3	5.5	12.6		100	64	45	201	128	89
35101-C11	TeraFrame, Vert Cbl Ring Mgr, Large, 51U x 700/800 mm W	2.3	5.5	12.6		100	64	45	201	128	89
35102-C00	TeraFrame, Vert Cbl Mgr, Extended, 24U x 700 mm W	Varies	13.6	34.0		271	173	120	541	346	241
35102-C01	TeraFrame, Vert Cbl Mgr, Extended, 36U x 700 mm W	Varies	13.6	34.0		271	173	120	541	346	241
35102-C02	TeraFrame, Vert Cbl Mgr, Extended, 42U x 700 mm W	Varies	13.6	34.0		271	173	120	541	346	241
35102-C03	TeraFrame, Vert Cbl Mgr, Extended, 43U x 700 mm W	Varies	13.6	34.0		271	173	120	541	346	241
35102-C04	TeraFrame, Vert Cbl Mgr, Extended, 44U x 700 mm W	Varies	13.6	34.0		271	173	120	541	346	241
35102-C05	TeraFrame, Vert Cbl Mgr, Extended, 45U x 700 mm W	Varies	13.6	34.0		271	173	120	541	346	241

Fill Ratio is the percentage of Usable Area filled by cables including the gaps between cables. Fill for double-sided (DS) cable managers is listed in two rows (Front/Rear).

Estimated Cable Fill Capacities for CPI Cable Management and Pathway Products

Part Number	Description	Cable Manager Specs.			Cable OD (in.) Fill Ratio	Recommended Cable Fill			Maximum Cable Fill		
		Interior Width (in.)	Interior Depth (in.)	Usable Area (sq. in.)		Cat 5e	Cat 6	Cat 6a	Cat 5e	Cat 6	Cat 6a
						0.200	0.250	0.300	0.200	0.250	0.300
						50%	50%	50%	100%	100%	100%
35102-C06	TeraFrame, Vert Cbl Mgr, Extended, 46U x 700 mm W	Varies	13.6	34.0		271	173	120	541	346	241
35102-C07	TeraFrame, Vert Cbl Mgr, Extended, 47U x 700 mm W	Varies	13.6	34.0		271	173	120	541	346	241
35102-C08	TeraFrame, Vert Cbl Mgr, Extended, 48U x 700 mm W	Varies	13.6	34.0		271	173	120	541	346	241
35102-C09	TeraFrame, Vert Cbl Mgr, Extended, 49U x 700 mm W	Varies	13.6	34.0		271	173	120	541	346	241
35102-C10	TeraFrame, Vert Cbl Mgr, Extended, 50U x 700 mm W	Varies	13.6	34.0		271	173	120	541	346	241
35102-C11	TeraFrame, Vert Cbl Mgr, Extended, 51U x 700 mm W	Varies	13.6	34.0		271	173	120	541	346	241
35103-C00	TeraFrame, Vert Cbl Mgr, Extended, 24U x 800 mm W	Varies	13.6	58.0		462	295	205	923	591	410
35103-C01	TeraFrame, Vert Cbl Mgr, Extended, 36U x 800 mm W	Varies	13.6	58.0		462	295	205	923	591	410
35103-C02	TeraFrame, Vert Cbl Mgr, Extended, 42U x 800 mm W	Varies	13.6	58.0		462	295	205	923	591	410
35103-C03	TeraFrame, Vert Cbl Mgr, Extended, 43U x 800 mm W	Varies	13.6	58.0		462	295	205	923	591	410
35103-C04	TeraFrame, Vert Cbl Mgr, Extended, 44U x 800 mm W	Varies	13.6	58.0		462	295	205	923	591	410
35103-C05	TeraFrame, Vert Cbl Mgr, Extended, 45U x 800 mm W	Varies	13.6	58.0		462	295	205	923	591	410
35103-C06	TeraFrame, Vert Cbl Mgr, Extended, 46U x 800 mm	Varies	13.6	58.0		462	295	205	923	591	410
35103-C07	TeraFrame, Vert Cbl Mgr, Extended, 47U x 800 mm W	Varies	13.6	58.0		462	295	205	923	591	410
35103-C08	TeraFrame, Vert Cbl Mgr, Extended, 48U x 800 mm W	Varies	13.6	58.0		462	295	205	923	591	410
35103-C09	TeraFrame, Vert Cbl Mgr, Extended, 49U x 800 mm W	Varies	13.6	58.0		462	295	205	923	591	410
35103-C10	TeraFrame, Vert Cbl Mgr, Extended, 50U x 800 mm W	Varies	13.6	58.0		462	295	205	923	591	410
35103-C11	TeraFrame, Vert Cbl Mgr, Extended, 51U x 800 mm W	Varies	13.6	58.0		462	295	205	923	591	410
39087-X00	Ring Cable Manager, 6-slide, 42U x 600 mm W	0.9	3.3	2.9		23	15	10	46	30	21
39087-X01	Ring Cable Manager, 6-slide, 43U x 600 mm W	0.9	3.3	2.9		23	15	10	46	30	21
39087-X02	Ring Cable Manager, 6-slide, 44U x 600 mm W	0.9	3.3	2.9		23	15	10	46	30	21
39087-X03	Ring Cable Manager, 6-slide, 45U x 600 mm W	0.9	3.3	2.9		23	15	10	46	30	21
39087-X04	Ring Cable Manager, 6-slide, 46U x 600 mm W	0.9	3.3	2.9		23	15	10	46	30	21
39087-X05	Ring Cable Manager, 6-slide, 47U x 600 mm W	0.9	3.3	2.9		23	15	10	46	30	21
39087-X06	Ring Cable Manager, 6-slide, 48U x 600 mm W	0.9	3.3	2.9		23	15	10	46	30	21
39087-X07	Ring Cable Manager, 6-slide, 49U x 600 mm W	0.9	3.3	2.9		23	15	10	46	30	21
39087-X08	Ring Cable Manager, 6-slide, 50U x 600 mm W	0.9	3.3	2.9		23	15	10	46	30	21
39087-X09	Ring Cable Manager, 6-slide, 51U x 600 mm W	0.9	3.3	2.9		23	15	10	46	30	21
39087-X10	Ring Cable Manager, 6-slide, 52U x 600 mm W	0.9	3.3	2.9		23	15	10	46	30	21
39088-X00	Ring Cable Manager, 6-slide, 42U x 700 mm W	2.3	5.5	12.6		100	64	45	201	128	89
39088-X01	Ring Cable Manager, 6-slide, 43U x 700 mm W	2.3	5.5	12.6		100	64	45	201	128	89
39088-X02	Ring Cable Manager, 6-slide, 44U x 700 mm W	2.3	5.5	12.6		100	64	45	201	128	89
39088-X03	Ring Cable Manager, 6-slide, 45U x 700 mm W	2.3	5.5	12.6		100	64	45	201	128	89
39088-X04	Ring Cable Manager, 6-slide, 46U x 700 mm W	2.3	5.5	12.6		100	64	45	201	128	89
39088-X05	Ring Cable Manager, 6-slide, 47U x 700 mm W	2.3	5.5	12.6		100	64	45	201	128	89
39088-X06	Ring Cable Manager, 6-slide, 48U x 700 mm W	2.3	5.5	12.6		100	64	45	201	128	89
39088-X07	Ring Cable Manager, 6-slide, 49U x 700 mm W	2.3	5.5	12.6		100	64	45	201	128	89

Fill Ratio is the percentage of Usable Area filled by cables including the gaps between cables. Fill for double-sided (DS) cable managers is listed in two rows (Front/Rear).

Estimated Cable Fill Capacities for CPI Cable Management and Pathway Products

Part Number	Description	Cable Manager Specs.			Cable OD (in.) Fill Ratio	Recommended Cable Fill			Maximum Cable Fill		
		Interior Width (in.)	Interior Depth (in.)	Usable Area (sq. in.)		Cat 5e	Cat 6	Cat 6a	Cat 5e	Cat 6	Cat 6a
						0.200	0.250	0.300	0.200	0.250	0.300
39088-X08	Ring Cable Manager, 6-slide, 50U x 700 mm W	2.3	5.5	12.6		100	64	45	201	128	89
39088-X09	Ring Cable Manager, 6-slide, 51U x 700 mm W	2.3	5.5	12.6		100	64	45	201	128	89
39088-X10	Ring Cable Manager, 6-slide, 52U x 700 mm W	2.3	5.5	12.6		100	64	45	201	128	89
39089-X00	Ring Cable Manager, 6-slide, 42U x 800 mm W	4.2	3.5	14.7		117	75	52	234	150	104
39089-X01	Ring Cable Manager, 6-slide, 43U x 800 mm W	4.2	3.5	14.7		117	75	52	234	150	104
39089-X02	Ring Cable Manager, 6-slide, 44U x 800 mm W	4.2	3.5	14.7		117	75	52	234	150	104
39089-X03	Ring Cable Manager, 6-slide, 45U x 800 mm W	4.2	3.5	14.7		117	75	52	234	150	104
39089-X04	Ring Cable Manager, 6-slide, 46U x 800 mm W	4.2	3.5	14.7		117	75	52	234	150	104
39089-X05	Ring Cable Manager, 6-slide, 47U x 800 mm W	4.2	3.5	14.7		117	75	52	234	150	104
39089-X06	Ring Cable Manager, 6-slide, 48U x 800 mm W	4.2	3.5	14.7		117	75	52	234	150	104
39089-X07	Ring Cable Manager, 6-slide, 49U x 800 mm W	4.2	3.5	14.7		117	75	52	234	150	104
39089-X08	Ring Cable Manager, 6-slide, 50U x 800 mm W	4.2	3.5	14.7		117	75	52	234	150	104
39089-X09	Ring Cable Manager, 6-slide, 51U x 800 mm W	4.2	3.5	14.7		117	75	52	234	150	104
39089-X10	Ring Cable Manager, 6-slide, 52U x 800 mm W	4.2	3.5	14.7		117	75	52	234	150	104
39112-X11	Finger Cable Manager, 42U x 700 mm W	2.6	8.4	21.8		173	111	77	347	222	154
39112-X12	Finger Cable Manager, 43U x 700 mm W	2.6	8.4	21.8		173	111	77	347	222	154
39112-X13	Finger Cable Manager, 44U x 700 mm W	2.6	8.4	21.8		173	111	77	347	222	154
39112-X14	Finger Cable Manager, 45U x 700 mm W	2.6	8.4	21.8		173	111	77	347	222	154
39112-X15	Finger Cable Manager, 46U x 700 mm W	2.6	8.4	21.8		173	111	77	347	222	154
39112-X16	Finger Cable Manager, 47U x 700 mm W	2.6	8.4	21.8		173	111	77	347	222	154
39112-X17	Finger Cable Manager, 48U x 700 mm W	2.6	8.4	21.8		173	111	77	347	222	154
39112-X18	Finger Cable Manager, 49U x 700 mm W	2.6	8.4	21.8		173	111	77	347	222	154
39112-X19	Finger Cable Manager, 50U x 700 mm W	2.6	8.4	21.8		173	111	77	347	222	154
39112-X20	Finger Cable Manager, 51U x 700 mm W	2.6	8.4	21.8		173	111	77	347	222	154
39112-X21	Finger Cable Manager, 52U x 700 mm W	2.6	8.4	21.8		173	111	77	347	222	154
39112-X22	Finger Cable Manager, 42U x 800 mm W	4.6	8.4	38.6		307	197	137	614	393	273
39112-X23	Finger Cable Manager, 43U x 800 mm W	4.6	8.4	38.6		307	197	137	614	393	273
39112-X24	Finger Cable Manager, 44U x 800 mm W	4.6	8.4	38.6		307	197	137	614	393	273
39112-X25	Finger Cable Manager, 45U x 800 mm W	4.6	8.4	38.6		307	197	137	614	393	273
39112-X26	Finger Cable Manager, 46U x 800 mm W	4.6	8.4	38.6		307	197	137	614	393	273
39112-X27	Finger Cable Manager, 47U x 800 mm W	4.6	8.4	38.6		307	197	137	614	393	273
39112-X28	Finger Cable Manager, 48U x 800 mm W	4.6	8.4	38.6		307	197	137	614	393	273
39112-X29	Finger Cable Manager, 49U x 800 mm W	4.6	8.4	38.6		307	197	137	614	393	273
39112-X30	Finger Cable Manager, 50U x 800 mm W	4.6	8.4	38.6		307	197	137	614	393	273
39112-X31	Finger Cable Manager, 51U x 800 mm W	4.6	8.4	38.6		307	197	137	614	393	273
39112-X32	Finger Cable Manager, 52U x 800 mm W	4.6	8.4	38.6		307	197	137	614	393	273
39120-X00	Finger Cable Manager, 42U x 600 mm W	0.75	4.0	3.0		24	15	11	48	31	21

Fill Ratio is the percentage of Usable Area filled by cables including the gaps between cables. Fill for double-sided (DS) cable managers is listed in two rows (Front/Rear).

Estimated Cable Fill Capacities for CPI Cable Management and Pathway Products

Part Number	Description	Cable Manager Specs.			Cable OD (in.) Fill Ratio	Recommended Cable Fill			Maximum Cable Fill		
		Interior Width (in.)	Interior Depth (in.)	Usable Area (sq. in.)		Cat 5e	Cat 6	Cat 6a	Cat 5e	Cat 6	Cat 6a
						0.200	0.250	0.300	0.200	0.250	0.300
39120-X01	Finger Cable Manager, 43U x 600 mm W	0.75	4.0	3.0		24	15	11	48	31	21
39120-X02	Finger Cable Manager, 44U x 600 mm W	0.75	4.0	3.0		24	15	11	48	31	21
39120-X03	Finger Cable Manager, 45U x 600 mm W	0.75	4.0	3.0		24	15	11	48	31	21
39120-X04	Finger Cable Manager, 46U x 600 mm W	0.75	4.0	3.0		24	15	11	48	31	21
39120-X05	Finger Cable Manager, 47U x 600 mm W	0.75	4.0	3.0		24	15	11	48	31	21
39120-X06	Finger Cable Manager, 48U x 600 mm W	0.75	4.0	3.0		24	15	11	48	31	21
39120-X07	Finger Cable Manager, 49U x 600 mm W	0.75	4.0	3.0		24	15	11	48	31	21
39120-X08	Finger Cable Manager, 50U x 600 mm W	0.75	4.0	3.0		24	15	11	48	31	21
39120-X09	Finger Cable Manager, 51U x 600 mm W	0.75	4.0	3.0		24	15	11	48	31	21
39120-X10	Finger Cable Manager, 52U x 600 mm W	0.75	4.0	3.0		24	15	11	48	31	21
39124-X00	Cable Lashing Bracket, 6-slide, 42U	1.6	1 x 1.5" Ø	1.7		14	9	6	27	17	12
39124-X01	Cable Lashing Bracket, 6-slide, 43U	1.6	1 x 1.5" Ø	1.7		14	9	6	27	17	12
39124-X02	Cable Lashing Bracket, 6-slide, 44U	1.6	1 x 1.5" Ø	1.7		14	9	6	27	17	12
39124-X03	Cable Lashing Bracket, 6-slide, 45U	1.6	1 x 1.5" Ø	1.7		14	9	6	27	17	12
39124-X04	Cable Lashing Bracket, 6-slide, 46U	1.6	1 x 1.5" Ø	1.7		14	9	6	27	17	12
39124-X05	Cable Lashing Bracket, 6-slide, 47U	1.6	1 x 1.5" Ø	1.7		14	9	6	27	17	12
39124-X06	Cable Lashing Bracket, 6-slide, 48U	1.6	1 x 1.5" Ø	1.7		14	9	6	27	17	12
39124-X07	Cable Lashing Bracket, 6-slide, 49U	1.6	1 x 1.5" Ø	1.7		14	9	6	27	17	12
39124-X08	Cable Lashing Bracket, 6-slide, 50U	1.6	1 x 1.5" Ø	1.7		14	9	6	27	17	12
39124-X09	Cable Lashing Bracket, 6-slide, 51U	1.6	1 x 1.5" Ø	1.7		14	9	6	27	17	12
39124-X10	Cable Lashing Bracket, 6-slide, 52U	1.6	1 x 1.5" Ø	1.7		14	9	6	27	17	12
39127-X00	Ring Cable Manager, 4-slide, 42U x 600 mm W	0.9	3.3	2.9		23	15	10	46	30	21
39127-X01	Ring Cable Manager, 4-slide, 43U x 600 mm W	0.9	3.3	2.9		23	15	10	46	30	21
39127-X02	Ring Cable Manager, 4-slide, 44U x 600 mm W	0.9	3.3	2.9		23	15	10	46	30	21
39127-X03	Ring Cable Manager, 4-slide, 45U x 600 mm W	0.9	3.3	2.9		23	15	10	46	30	21
39127-X04	Ring Cable Manager, 4-slide, 46U x 600 mm W	0.9	3.3	2.9		23	15	10	46	30	21
39127-X05	Ring Cable Manager, 4-slide, 47U x 600 mm W	0.9	3.3	2.9		23	15	10	46	30	21
39127-X06	Ring Cable Manager, 4-slide, 48U x 600 mm W	0.9	3.3	2.9		23	15	10	46	30	21
39127-X07	Ring Cable Manager, 4-slide, 49U x 600 mm W	0.9	3.3	2.9		23	15	10	46	30	21
39127-X08	Ring Cable Manager, 4-slide, 50U x 600 mm W	0.9	3.3	2.9		23	15	10	46	30	21
39127-X09	Ring Cable Manager, 4-slide, 51U x 600 mm W	0.9	3.3	2.9		23	15	10	46	30	21
39127-X10	Ring Cable Manager, 4-slide, 52U x 600 mm W	0.9	3.3	2.9		23	15	10	46	30	21
39128-X00	Ring Cable Manager, 4-slide, 42U x 700 mm W	2.3	5.5	12.6		100	64	45	201	128	89
39128-X01	Ring Cable Manager, 4-slide, 43U x 700 mm W	2.3	5.5	12.6		100	64	45	201	128	89
39128-X02	Ring Cable Manager, 4-slide, 44U x 700 mm W	2.3	5.5	12.6		100	64	45	201	128	89
39128-X03	Ring Cable Manager, 4-slide, 45U x 700 mm W	2.3	5.5	12.6		100	64	45	201	128	89
39128-X04	Ring Cable Manager, 4-slide, 46U x 700 mm W	2.3	5.5	12.6		100	64	45	201	128	89

Fill Ratio is the percentage of Usable Area filled by cables including the gaps between cables. Fill for double-sided (DS) cable managers is listed in two rows (Front/Rear).

Estimated Cable Fill Capacities for CPI Cable Management and Pathway Products

Part Number	Description	Cable Manager Specs.			Cable OD (in.) Fill Ratio	Recommended Cable Fill			Maximum Cable Fill		
		Interior Width (in.)	Interior Depth (in.)	Usable Area (sq. in.)		Cat 5e	Cat 6	Cat 6a	Cat 5e	Cat 6	Cat 6a
						0.200	0.250	0.300	0.200	0.250	0.300
39128-X05	Ring Cable Manager, 4-slide, 47U x 700 mm W	2.3	5.5	12.6		100	64	45	201	128	89
39128-X06	Ring Cable Manager, 4-slide, 48U x 700 mm W	2.3	5.5	12.6		100	64	45	201	128	89
39128-X07	Ring Cable Manager, 4-slide, 49U x 700 mm W	2.3	5.5	12.6		100	64	45	201	128	89
39128-X08	Ring Cable Manager, 4-slide, 50U x 700 mm W	2.3	5.5	12.6		100	64	45	201	128	89
39128-X09	Ring Cable Manager, 4-slide, 51U x 700 mm W	2.3	5.5	12.6		100	64	45	201	128	89
39128-X10	Ring Cable Manager, 4-slide, 52U x 700 mm W	2.3	5.5	12.6		100	64	45	201	128	89
39129-X00	Ring Cable Manager, 4-slide, 42U x 800 mm W	4.2	3.5	14.7		117	75	52	234	150	104
39129-X01	Ring Cable Manager, 4-slide, 43U x 800 mm W	4.2	3.5	14.7		117	75	52	234	150	104
39129-X02	Ring Cable Manager, 4-slide, 44U x 800 mm W	4.2	3.5	14.7		117	75	52	234	150	104
39129-X03	Ring Cable Manager, 4-slide, 45U x 800 mm W	4.2	3.5	14.7		117	75	52	234	150	104
39129-X04	Ring Cable Manager, 4-slide, 46U x 800 mm W	4.2	3.5	14.7		117	75	52	234	150	104
39129-X05	Ring Cable Manager, 4-slide, 47U x 800 mm W	4.2	3.5	14.7		117	75	52	234	150	104
39129-X06	Ring Cable Manager, 4-slide, 48U x 800 mm W	4.2	3.5	14.7		117	75	52	234	150	104
39129-X07	Ring Cable Manager, 4-slide, 49U x 800 mm W	4.2	3.5	14.7		117	75	52	234	150	104
39129-X08	Ring Cable Manager, 4-slide, 50U x 800 mm W	4.2	3.5	14.7		117	75	52	234	150	104
39129-X09	Ring Cable Manager, 4-slide, 51U x 800 mm W	4.2	3.5	14.7		117	75	52	234	150	104
39129-X10	Ring Cable Manager, 4-slide, 52U x 800 mm W	4.2	3.5	14.7		117	75	52	234	150	104
39131-X00	Cable Lashing Bracket, 4-slide, 42U	1.6	1 x 1.5" Ø	1.7		14	9	6	27	17	12
39131-X01	Cable Lashing Bracket, 4-slide, 43U	1.6	1 x 1.5" Ø	1.7		14	9	6	27	17	12
39131-X02	Cable Lashing Bracket, 4-slide, 44U	1.6	1 x 1.5" Ø	1.7		14	9	6	27	17	12
39131-X03	Cable Lashing Bracket, 4-slide, 45U	1.6	1 x 1.5" Ø	1.7		14	9	6	27	17	12
39131-X04	Cable Lashing Bracket, 4-slide, 46U	1.6	1 x 1.5" Ø	1.7		14	9	6	27	17	12
39131-X05	Cable Lashing Bracket, 4-slide, 47U	1.6	1 x 1.5" Ø	1.7		14	9	6	27	17	12
39131-X06	Cable Lashing Bracket, 4-slide, 48U	1.6	1 x 1.5" Ø	1.7		14	9	6	27	17	12
39131-X07	Cable Lashing Bracket, 4-slide, 49U	1.6	1 x 1.5" Ø	1.7		14	9	6	27	17	12
39131-X08	Cable Lashing Bracket, 4-slide, 50U	1.6	1 x 1.5" Ø	1.7		14	9	6	27	17	12
39131-X09	Cable Lashing Bracket, 4-slide, 51U	1.6	1 x 1.5" Ø	1.7		14	9	6	27	17	12
39131-X10	Cable Lashing Bracket, 4-slide, 52U	1.6	1 x 1.5" Ø	1.7		14	9	6	27	17	12
Horizontal Cable Managers for Racks and Cabinet Enclosures											
10365-XXX	Horizontal Cable Tray	2.0	4.7	9.4		75	48	33	150	96	66
11563-X01	Large Horiz Cable Ring, Individual	2.8	6.0	16.8		134	86	59	267	171	119
11564-XXX	Large Horiz Ring Panel, 2U	2.8	6.0	16.8		134	86	59	267	171	119
11752-XXX	Rack Cable Mgr, Small Ring, 1U	1.2	0.9	1.0		8	5	4	16	10	7
11753-XXX	Rack Cable Mgr, Medium Ring, 2U	2.5	1.2	3.0		24	15	11	48	31	21
12183-XXX	Upper Jumper Tray, 2U, 3.5"D	1.9	3.3	6.2		49	32	22	99	63	44

Fill Ratio is the percentage of Usable Area filled by cables including the gaps between cables. Fill for double-sided (DS) cable managers is listed in two rows (Front/Rear).

Estimated Cable Fill Capacities for CPI Cable Management and Pathway Products

Part Number	Description	Cable Manager Specs.			Cable OD (in.) Fill Ratio	Recommended Cable Fill			Maximum Cable Fill		
		Interior Width (in.)	Interior Depth (in.)	Usable Area (sq. in.)		Cat 5e	Cat 6	Cat 6a	Cat 5e	Cat 6	Cat 6a
						0.200	0.250	0.300	0.200	0.250	0.300
12185-XXX	Lower Jumper Tray, Single, 2U	2.0	3.3	6.6		53	34	23	105	67	47
12186-X01	Transition Plate	1.9	3.3	6.2		49	32	22	99	63	44
12187-XXX	Lower Jumper Tray, Double, 3U	3.8	3.3	12.5		99	64	44	199	127	88
12382-XXX	Rack TopMount Cable Trough, 6"D	2.0	5.8	11.6		92	59	41	185	118	82
12383-XXX	Rack TopMount Cable Trough, 9"D	1.9	8.8	16.7		133	85	59	266	170	118
12541-X19	19" Horiz Wire Mgmt Panel, 1U, w/o Spools	1.4	2.4	3.3		26	17	12	53	34	23
12542-X19	19" Horiz Wire Mgmt Panel, 2U, w/o Spools	3.2	2.4	7.6		60	39	27	121	77	54
13070-X19	19" Horiz Wire Mgmt Panel, 1U	1.4	2.4	3.3		26	17	12	53	34	23
13075-X19	19" Horiz Wire Mgmt Panel, 2U	3.2	2.4	7.6		60	39	27	121	77	54
13168-XXX	Enhanced MegaFrame FTB Cbl Tray, Wide	3.8	2.4	9.1		72	46	32	145	93	64
13169-XXX	Enhanced MegaFrame FTB Cbl Tray, Narrow	1.7	2.4	4.0		32	20	14	64	41	28
13183-XXX	Upper Jumper Tray, 2U, 6"D	2.9	5.8	16.8		134	86	59	267	171	119
13517-701	Rack-Mount Cable Shelf (sum of 3 openings)	0.7	11.4	8.0		64	41	28	127	81	57
13930-701	Velocity SS Horizontal Cable Manager, 1U	Varies	3.2	2.9		23	15	10	46	30	21
13930-702	Velocity SS Horizontal Cable Manager, 2U	Varies	3.2	9.7		77	49	34	154	99	69
13930-703	Velocity SS Horizontal Cable Manager, 3U	Varies	3.2	16.5		131	84	58	263	168	117
30130-7XX	Univ Horiz Cable Mgr, 2U	2.7	3.9	10.5		84	53	37	167	107	74
30131-7XX	Univ Horiz Cable Mgr, 3U	4.5	3.9	17.5		139	89	62	279	178	124
30139-7XX	Univ Horiz Cable Mgr, 1U	1.0	3.9	3.9		31	20	14	62	40	28
30330-7XX	Univ Horiz Cable Mgr, 2U, Deep	2.7	5.2	14.0		111	71	50	223	143	99
30331-7XX	Univ Horiz Cable Mgr, 3U, Deep	4.5	5.2	23.4		186	119	83	372	238	166
30339-7XX	Univ Horiz Cable Mgr, 1U, Deep	1.0	5.2	5.2		41	26	18	83	53	37
30529-7XX	DS Univ Horiz Cable Mgr, 1U (Front/Rear)	1.0	3.9	3.9	Front	31	20	14	62	40	28
		0.8	6.8	5.4	Rear	43	28	19	86	55	38
30530-7XX	DS Univ Horiz Cable Mgr, 2U (Front/Rear)	2.7	3.9	10.5	Front	84	53	37	167	107	74
		2.5	6.8	17.0	Rear	135	87	60	271	173	120
30531-7XX	DS Univ Horiz Cable Mgr, 3U (Front/Rear)	4.5	3.9	17.5	Front	139	89	62	279	178	124
		4.3	6.8	29.2	Rear	232	149	103	465	297	207
30540-719	DS Univ Horiz Cable Mgr for Use with CCS and o Deep Rack, 2U, 19"W (Front/Rear/Total)	2.7	3.9	10.5	Front	84	53	37	167	107	74
		2.6	9.2	23.9	Rear	190	122	85	380	243	169
35106-C0X	TeraFrame, FTB Cable Mgr, 700mm	2.0	2.3	4.6		37	23	16	73	47	33
35108-C0X	TeraFrame, FTB Cable Mgr, 800mm	3.7	3.8	14.0		111	71	50	223	143	99
35441-701	Evolution SS Horizontal Cable Manager, 1U	0.9	6.5	5.5		44	28	19	88	56	39
35441-702	Evolution SS Horizontal Cable Manager, 2U	2.6	6.5	17.0		135	87	60	271	173	120
35441-703	Evolution SS Horizontal Cable Manager, 3U	4.3	6.5	28.0		223	143	99	446	285	198
39077-X00	Front-to-Rear Cable Manager	2.5	3.0	7.5		60	38	27	119	76	53

Fill Ratio is the percentage of Usable Area filled by cables including the gaps between cables. Fill for double-sided (DS) cable managers is listed in two rows (Front/Rear).

Estimated Cable Fill Capacities for CPI Cable Management and Pathway Products

Part Number	Description	Cable Manager Specs.			Recommended Cable Fill			Maximum Cable Fill			
		Interior Width (in.)	Interior Depth (in.)	Usable Area (sq. in.)	Cable	Cat 5e	Cat 6	Cat 6a	Cat 5e	Cat 6	Cat 6a
					OD (in.)	0.200	0.250	0.300	0.200	0.250	0.300
					Fill Ratio	50%	50%	50%	100%	100%	100%
Individual Cable Management Loops, Rings, Clips, Guides, and Cable Ties											
02006-2XX	Safe-T-Grip, Open, 6"L	2" Ø	N/A	3.1		25	16	11	49	32	22
02009-2XX	Safe-T-Grip, Open, 9"L	3" Ø	N/A	7.0		56	36	25	111	71	50
02012-2XX	Safe-T-Grip, Open, 12"L	4" Ø	N/A	12.5		99	64	44	199	127	88
05006-2XX	Safe-T-Grip, End, 6"L	2" Ø	N/A	3.1		25	16	11	49	32	22
05009-2XX	Safe-T-Grip, End, 9"L	3" Ø	N/A	7.0		56	36	25	111	71	50
05012-2XX	Safe-T-Grip, End, 12"L	4" Ø	N/A	12.5		99	64	44	199	127	88
06006-2XX	Safe-T-Grip, Center, 6"L	2" Ø	N/A	3.1		25	16	11	49	32	22
06009-2XX	Safe-T-Grip, Center, 9"L	3" Ø	N/A	7.0		56	36	25	111	71	50
06012-2XX	Safe-T-Grip, Center, 12"L	4" Ø	N/A	12.5		99	64	44	199	127	88
10419-001	Horiz Cable Guide, 1 Loop (Per Loop)	2.5	3.3	8.2		65	42	29	131	84	58
10683-001	IBM Style Vertical Cable Loop	2.2	3.8	8.3		66	42	29	132	85	59
11125-0XX	Channel-Mounted Distrib Ring, 3"W	2.6	3.0	7.8		62	40	28	124	79	55
11153-001	Horiz Cable Guide, 6 Loop (Per Loop)	2.6	2.0	5.2		41	26	18	83	53	37
11154-001	Horiz Cable Guide, 4 Loop (Per Loop)	2.6	1.5	3.9		31	20	14	62	40	28
11157-001	Horiz Cable Guide, 2 Loop (Per Loop)	2.6	1.9	4.9		39	25	17	78	50	35
11225-001	Channel Cable Clip, Universal Rack	0.6	2.3	1.3		10	7	5	21	13	9
11225-002	Channel Cable Clip, Standard Rack	1.1	2.4	2.6		21	13	9	41	26	18
11228-X01	Narrow Cable Ring	1.1	3.8	4.1		33	21	15	65	42	29
11230-X01	Narrow Cable Loop	1.1	3.8	4.1		33	21	15	65	42	29
11799-001	Cable Loop for Swing Gate, 6PK	3" Ø	N/A	7.0		56	36	25	111	71	50
12210-X01	Channel Cable Clip, 6"D Standard Rack	1.0	5.4	5.4		43	28	19	86	55	38
12228-X01	Double-Wide Cable Ring	2.6	3.8	9.8		78	50	35	156	100	69
12340-701	Horiz Cable Guide, 4U (Per U)	1.4	3.6	5.0		40	25	18	80	51	35
12341-701	Horiz Cable Guide, 2U (Per U)	1.3	3.6	4.6		37	23	16	73	47	33
12370-00X	Finger Snaps™ Cable Guides, 6 Loop (Per Loop)	Varies	2.4	3.1		25	16	11	49	32	22
12891-70X	Extended Finger Bracket (Per U)	Varies	5.8	6.6		53	34	23	105	67	47
13079-001	Vertical Wire Mgmt Loop	2.3	3.1	7.1		56	36	25	113	72	50
Wall-Mount Cable Management Rings											
10812-001	Closed Composite Distrib Ring, 3"W	2.8	3.1	8.6		68	44	30	137	88	61
10900-500	Wall Cable Support Bracket, 10"H x 6"D	5.8	5.9	34.2		272	174	121	544	348	242
10910-500	Wall Cable Support Bracket, 8"H x 4"D	3.9	3.9	15.2		121	77	54	242	155	108
10920-500	Wall Cable Support Bracket, 12"H x 4"D	7.5	3.9	29.2		232	149	103	465	297	207
10921-500	Wall Cable Support Bracket, 8"H x 4"D	3.8	3.9	14.8		118	75	52	236	151	105
10941-000	Metal D-Rings, SM	2.1	2.3	4.8		38	24	17	76	49	34

Fill Ratio is the percentage of Usable Area filled by cables including the gaps between cables. Fill for double-sided (DS) cable managers is listed in two rows (Front/Rear).

Estimated Cable Fill Capacities for CPI Cable Management and Pathway Products

Part Number	Description	Cable Manager Specs.			Cable OD (in.) Fill Ratio	Recommended Cable Fill			Maximum Cable Fill		
		Interior Width (in.)	Interior Depth (in.)	Usable Area (sq. in.)		Cat 5e	Cat 6	Cat 6a	Cat 5e	Cat 6	Cat 6a
						0.200	0.250	0.300	0.200	0.250	0.300
10942-000	Metal D-Rings, MED	3.1	3.3	10.2		81	52	36	162	104	72
10943-000	Metal D-Rings, LG	5.1	3.3	16.8		134	86	59	267	171	119
11322-106	J-Hook Ceiling Cable Bracket, 6"H x 3"D	2.0	2.8	5.6		45	29	20	89	57	40
11322-112	J-Hook Ceiling Cable Bracket, 12"H x 3"D	2.0	2.8	5.6		45	29	20	89	57	40
11322-118	J-Hook Ceiling Cable Bracket, 18"H x 3"D	2.0	2.8	5.6		45	29	20	89	57	40
12035-001	Open Composite Distrib Ring, 2"W	2.6	2.0	5.2		41	26	18	83	53	37
12127-001	Closed Composite Distrib Ring, 2"W	1.9	2.1	3.9		31	20	14	62	40	28
KoldLok Raised Floor Grommets											
13571-00X	Integral Raised Floor Grommet	8.0	4.0	32.0		255	163	113	509	326	226
13576-00X	Surface-Mount Raised Floor Grommet	8.2	4.0	32.8		261	167	116	522	334	232
13671-00X	Split Integral Raised Floor Grommet	8.0	4.0	32.0		255	163	113	509	326	226
13674-00X	Extended Grommet, 3" Brush	22.0	2.5	55.0		438	280	195	875	560	389
13675-00X	Extended Grommet, 6" Brush	22.0	5.5	121.0		963	616	428	1926	1232	856
13676-00X	Large Surface-Mount Raised Floor Grommet	8.2	4.0	32.8		261	167	116	522	334	232
13677-00X	X-Large Surface-Mount Raised Floor Grommet	8.2	4.0	32.8		261	167	116	522	334	232
13870-00X	Wave Split Integral Grommet	7.7	5.8	45.5		362	232	161	724	463	322
13872-00X	Mini Raised Floor Grommet	5.0	2.5	12.5		99	64	44	199	127	88
13874-00X	4" (102 mm) Round Grommet	3.5 Ø	-	9.6		76	49	34	153	98	68
13875-00X	6" (152 mm) Round Grommet	5.3 Ø	-	22.5		179	115	80	358	229	159
Miscellaneous Rack, Cabinet and Cable Management Cable Openings											
46XXX-XXX	Universal Rack, Interior of Mounting Channel	0.6	2.5	1.5		12	8	5	24	15	11
48XXX-XXX	Universal Rack, Interior of Mounting Channel	0.6	2.5	1.5		12	8	5	24	15	11
55053-XXX	Standard Rack, Interior of Mounting Channel	1.1	2.6	2.8		22	14	10	45	29	20
663XX-XXX	6" Deep Standard Rack, Interior of Mntg Channel	1.0	5.6	5.6		45	29	20	89	57	40
16278-C01	TeraFrame HD, Cable Port, Bottom Panel	3.0	11.5	34.5		275	176	122	549	351	244
CXXXX-XXX	SlimFrame, Cable Port, Top Panel, Each	2.7 Ø	N/A	5.9		47	30	21	94	60	42
FXXX-XXXX-XXX-X	TeraFrame Gen3, Cable Port, Top Panel, Each	3.9	8.8	34.3		273	175	121	546	350	243
39132-XXX	TeraFrame Gen 3, Brush Opening, Bottom Panel, Each	3.9	8.8	34.3		273	175	121	546	349	243
39047-XXX	TeraFrame Gen 3, Brush Opening, 6-slide, Side Panel	3.9	8.8	34.3		273	175	121	546	349	243
39043-XXX	TeraFrame Gen 3, Brush Opening, 4-slide, Side Panel	3.9	8.8	34.3		273	175	121	546	349	243
GF-XXXXX-XX	GlobalFrame Gen2, Cable Port, Top Panel, Each	3.5	8.0	28.0		223	143	99	446	285	198
39080-XXX	GlobalFrame Gen2, Grommet, Bottom Panel, Each	3.5	8.0	28.0		223	143	99	446	285	198
39037-XXX	GlobalFrame Gen2, Grommet, 6-Slide, Side Panel, Each	3.5	8.0	28.0		223	143	99	446	285	198

Fill Ratio is the percentage of Usable Area filled by cables including the gaps between cables. Fill for double-sided (DS) cable managers is listed in two rows (Front/Rear).

Estimated Cable Fill Capacities for CPI Cable Management and Pathway Products

Part Number	Description	Cable Manager Specs.			Cable OD (in.) Fill Ratio	Recommended Cable Fill			Maximum Cable Fill		
		Interior Width (in.)	Interior Depth (in.)	Usable Area (sq. in.)		Cat 5e	Cat 6	Cat 6a	Cat 5e	Cat 6	Cat 6a
						0.200	0.250	0.300	0.200	0.250	0.300
39033-XXX	GlobalFrame Gen2, Grommet, 4-Slide, Side Panel, Each	3.5	8.0	28.0		223	143	99	446	285	198
39133-001	Equipment Rail Grommet Kit, Each Grommet	1.7	5.0	8.5		68	43	30	135	87	60
GF-XXXXX	GlobalFrame, Top Panel, Round Cable Port, Ea.	2.7 Ø	N/A	5.9		47	30	21	94	60	42
GF-XXXXX	GlobalFrame, Top Panel, Large Cable Port, Each	3.9	8.8	34.3		273	175	121	546	350	243
GT-XXXXX	GlobalFrame, Top Panel, Large Cable Port, Each	3.9	8.9	34.7		276	177	123	552	354	246
25037-7xx	GlobalFrame, Brush Side Panel, Cable Port, Ea.	3.9	8.8	34.3		273	175	121	546	350	243
25130-7xx	GlobalFrame, Bottom Panel, Cable Port, Each	8.8	3.9	34.3		273	175	121	546	350	243
25190-001	GlobalFrame, Cable Port Brush Kit, 1 brush kit	3.9	8.8	34.3		273	175	121	546	350	243
FXXX-XXXX-XXX	TeraFrame, Cable Port, Top Panel, Each	2.7 Ø	N/A	5.9		47	30	21	94	60	42
FXXX-XXXX-XXX	TeraFrame, Brush Opening, Server Top Panel, Each	3.9	8.8	34.3		273	175	121	546	349	243
FXXX-XXXX-XXX	TeraFrame, Brush Opening, Network Top Panel, Each	3.0	11.5	34.5		275	176	122	549	351	244
FHDX1X-11XB-CX2	TeraFrame HD, Cable Port, Top Panel, Each	3.0	11.5	34.5		275	176	122	549	351	244
35021-000	Cable Port Grommet Kit, for F-Series & GlobalFrame	2.7 Ø	N/A	5.9		47	30	21	94	60	42
35085-XXX	TeraFrame, Brush Opening, Bottom Panel	3.0	11.5	34.5		275	176	122	549	351	244
NXXX-XXXX-XXX	N-Series, Cable Port, Center Top Panel, Each	2.7 Ø	N/A	5.9		47	30	21	94	60	42
NXXX-XXXX-XXX	N-Series, Cable Knockout, Front Top Panel, Each	3.1	5.3	16.4		131	84	58	261	167	116
NX5X-XXXX-XXX	N-Series, Nx5, Cable Port, Center Top Panel, Each	2.7 Ø	N/A	5.9		47	30	21	94	60	42
NX5X-XXXX-XXX	N-Series, Nx5, Cable Knockout, Front Top Panel, Each	3.1	5.3	16.4		131	84	58	261	167	116
NX5X-XXXX-XXX	N-Series, Nx5, Brush Opening, Side, 49.1"D, Each	7.0	36.0	252.0		2005	1283	891	4011	2567	1783
NX5X-XXXX-XXX	N-Series, Nx5, Brush Opening, Side, 50.1"D, Each	7.0	37.0	259.0		2061	1319	916	4122	2638	1832
NX5X-XXXX-XXX	N-Series, Nx5, Brush Opening, Side, 51.1"D, Each	7.0	38.0	266.0		2117	1355	941	4234	2709	1882
MXXX-XXX	MegaFrame, Cable Port, Top Panel, Each	3.1	5.3	16.4		131	84	58	261	167	116
Varies	Cube-It PLUS, Knockout, Rear Panel, Each	2.7 Ø	N/A	5.9		47	30	21	94	60	42
Extended Fingers	Cable Opening (Per U)	Varies	5.8	6.6		53	34	23	105	67	47
Standard Fingers	Cable Opening (Per U)	Varies	3.2	3.5		28	18	12	56	36	25
N-Series Fingers	Cable Opening (Per U)	Varies	5.4	6.6		53	34	23	105	67	47
Evolution VCM	Cable Opening (Per U)	Varies	5.4	6.6		53	34	23	105	67	47
Evolution HCM	Cable Opening (Per U)	Varies	5.4	6.4		51	33	23	102	65	45
Velocity VCM	Cable Opening (Per U)	Varies	5.5	5.9		47	30	21	94	60	42
Velocity HCM	Cable Opening (Per U)	Varies	3.2	5.1		41	26	18	81	52	36

Fill Ratio is the percentage of Usable Area filled by cables including the gaps between cables. Fill for double-sided (DS) cable managers is listed in two rows (Front/Rear).

Estimated Cable Fill Capacities for CPI Cable Management and Pathway Products

Part Number	Description	Cable Manager Specs.			Cable OD (in.) Fill Ratio	Recommended Cable Fill			Maximum Cable Fill		
		Interior Width (in.)	Interior Depth (in.)	Usable Area (sq. in.)		Cat 5e	Cat 6	Cat 6a	Cat 5e	Cat 6	Cat 6a
						0.200	0.250	0.300	0.200	0.250	0.300
					50%	50%	50%	100%	100%	100%	
Cable Runway Products											
(Maximum fill is equivalent to TIA recommended maximum fill - 6" deep cable at 50% fill. Order accessory cable retaining posts if cable height exceeds the height of the runway.)											
10250-X04	Universal Cbl Runway, 1.5"H x 4"W x 9'-11.5"L	4.0	6.0	24		191	122	85	382	244	170
10250-X06	Universal Cbl Runway, 1.5"H x 6"W x 9'-11.5"L	6.0	6.0	36		286	183	127	573	367	255
10250-X09	Universal Cbl Runway, 1.5"H x 9"W x 9'-11.5"L	9.0	6.0	54		430	275	191	859	550	382
10250-X12	Universal Cbl Runway, 1.5"H x 12"W x 9'-11.5"L	12.0	6.0	72		573	367	255	1146	733	509
10250-X15	Universal Cbl Runway, 1.5"H x 15"W x 9'-11.5"L	15.0	6.0	90		716	458	318	1432	917	637
10250-X18	Universal Cbl Runway, 1.5"H x 18"W x 9'-11.5"L	18.0	6.0	108		859	550	382	1719	1100	764
10250-X24	Universal Cbl Runway, 1.5"H x 24"W x 9'-11.5"L	24.0	6.0	144		1146	733	509	2292	1467	1019
10692-X09	Trough Cable Runway, 8"H x 9"W x 9'-11.5"L	7.5	6.0	45		358	229	159	716	458	318
10692-X10	Trough Cable Runway, 8"H x 10"W x 9'-11.5"L	8.5	6.0	51		406	260	180	812	519	361
10692-X12	Trough Cable Runway, 8"H x 12"W x 9'-11.5"L	10.5	6.0	63		501	321	223	1003	642	446
10692-X15	Trough Cable Runway, 8"H x 15"W x 9'-11.5"L	13.5	6.0	81		645	413	286	1289	825	573
10692-X18	Trough Cable Runway, 8"H x 18"W x 9'-11.5"L	16.5	6.0	99		788	504	350	1576	1008	700
10693-X09	Trough Cable Runway, 8"H x 9"W x 9'-8.5"L	7.5	6.0	45		358	229	159	716	458	318
10693-X10	Trough Cable Runway, 8"H x 10"W x 9'-8.5"L	8.5	6.0	51		406	260	180	812	519	361
10693-X12	Trough Cable Runway, 8"H x 12"W x 9'-8.5"L	10.5	6.0	63		501	321	223	1003	642	446
10693-X15	Trough Cable Runway, 8"H x 15"W x 9'-8.5"L	13.5	6.0	81		645	413	286	1289	825	573
10693-X18	Trough Cable Runway, 8"H x 18"W x 9'-8.5"L	16.5	6.0	99		788	504	350	1576	1008	700
10723-X06	Cable Runway Outside Radius Bend, 6"W	6.0	6.0	36		286	183	127	573	367	255
10723-X09	Cable Runway Outside Radius Bend, 9"W	9.0	6.0	54		430	275	191	859	550	382
10723-X12	Cable Runway Outside Radius Bend, 12"W	12.0	6.0	72		573	367	255	1146	733	509
10723-X15	Cable Runway Outside Radius Bend, 15"W	15.0	6.0	90		716	458	318	1432	917	637
10723-X18	Cable Runway Outside Radius Bend, 18"W	18.0	6.0	108		859	550	382	1719	1100	764
10723-X20	Cable Runway Outside Radius Bend, 20"W	20.0	6.0	120		955	611	424	1910	1222	849
10723-X24	Cable Runway Outside Radius Bend, 24"W	24.0	6.0	144		1146	733	509	2292	1467	1019
10724-X06	Cable Runway Inside Radius Bend, 6"W	6.0	6.0	36		286	183	127	573	367	255
10724-X09	Cable Runway Inside Radius Bend, 9"W	9.0	6.0	54		430	275	191	859	550	382
10724-X12	Cable Runway Inside Radius Bend, 12"W	12.0	6.0	72		573	367	255	1146	733	509
10724-X15	Cable Runway Inside Radius Bend, 15"W	15.0	6.0	90		716	458	318	1432	917	637
10724-X18	Cable Runway Inside Radius Bend, 18"W	18.0	6.0	108		859	550	382	1719	1100	764
10724-X20	Cable Runway Inside Radius Bend, 20"W	20.0	6.0	120		955	611	424	1910	1222	849
10724-X24	Cable Runway Inside Radius Bend, 24"W	24.0	6.0	144		1146	733	509	2292	1467	1019
10822-X09	Cable Runway E-Bend, 9"W	9.0	6.0	54		430	275	191	859	550	382
10822-X12	Cable Runway E-Bend, 12"W	12.0	6.0	72		573	367	255	1146	733	509

Fill Ratio is the percentage of Usable Area filled by cables including the gaps between cables. Fill for double-sided (DS) cable managers is listed in two rows (Front/Rear).

Estimated Cable Fill Capacities for CPI Cable Management and Pathway Products

Part Number	Description	Cable Manager Specs.			Cable OD (in.) Fill Ratio	Recommended Cable Fill			Maximum Cable Fill		
		Interior Width (in.)	Interior Depth (in.)	Usable Area (sq. in.)		Cat 5e	Cat 6	Cat 6a	Cat 5e	Cat 6	Cat 6a
						0.200	0.250	0.300	0.200	0.250	0.300
10822-X18	Cable Runway E-Bend, 18"W	18.0	6.0	108		859	550	382	1719	1100	764
11252-X06	Telco Style Cbl Runway, 1.5"H x 6"W x 8'-8.5"L	6.0	6.0	36		286	183	127	573	367	255
11252-X09	Telco Style Cbl Runway, 1.5"H x 9"W x 8'-8.5"L	9.0	6.0	54		430	275	191	859	550	382
11252-X10	Telco Style Cbl Runway, 1.5"H x 10"W x 8'-8.5"L	10.0	6.0	60		477	306	212	955	611	424
11252-X12	Telco Style Cbl Runway, 1.5"H x 12"W x 8'-8.5"L	12.0	6.0	72		573	367	255	1146	733	509
11252-X13	Telco Style Cbl Runway, 1.5"H x 12"W x 4'-5.5"L	12.0	6.0	72		573	367	255	1146	733	509
11252-X15	Telco Style Cbl Runway, 1.5"H x 15"W x 8'-8.5"L	15.0	6.0	90		716	458	318	1432	917	637
11252-X18	Telco Style Cbl Runway, 1.5"H x 18"W x 8'-8.5"L	18.0	6.0	108		859	550	382	1719	1100	764
11252-X20	Telco Style Cbl Runway, 1.5"H x 20"W x 8'-8.5"L	20.0	6.0	120		955	611	424	1910	1222	849
11275-X06	UL Classified Cbl Rnwy, 1.5"H x 6"W x 8'-8.5"L	6.0	6.0	36		286	183	127	573	367	255
11275-X09	UL Classified Cbl Rnwy, 1.5"H x 9"W x 8'-8.5"L	9.0	6.0	54		430	275	191	859	550	382
11275-X12	UL Classified Cbl Rnwy, 1.5"H x 12"W x 8'-8.5"L	12.0	6.0	72		573	367	255	1146	733	509
11275-X15	UL Classified Cbl Rnwy, 1.5"H x 15"W x 8'-8.5"L	15.0	6.0	90		716	458	318	1432	917	637
11275-X18	UL Classified Cbl Rnwy, 1.5"H x 18"W x 8'-8.5"L	18.0	6.0	108		859	550	382	1719	1100	764
11275-X20	UL Classified Cbl Rnwy, 1.5"H x 20"W x 8'-8.5"L	20.0	6.0	120		955	611	424	1910	1222	849
11275-X24	UL Classified Cbl Rnwy, 1.5"H x 24"W x 8'-8.5"L	24.0	6.0	144		1146	733	509	2292	1467	1019
12100-X06	Cross Member Radius Drop, for 6"W Cbl Rnwy	3.0	1.4	4.2		33	21	15	67	43	30
12100-X09	Cross Member Radius Drop, for 9"W Cbl Rnwy	6.0	1.4	8.4		67	43	30	134	86	59
12100-X12	Cross Member Radius Drop, for 12"W Cbl Rnwy	8.0	1.4	11.2		89	57	40	178	114	79
12100-X18	Cross Member Radius Drop, for 18"W Cbl Rnwy	15.0	1.4	21		167	107	74	334	214	149
12100-X07	Radius Drop, for 9"W Movable Cross Member	4.5	1.4	6.3		50	32	22	100	64	45
12100-X10	Radius Drop, for 12"W Movable Cross Member	7.5	1.4	10.5		84	53	37	167	107	74
12100-X16	Radius Drop, for 18"W Movable Cross Member	12.5	1.4	17.5		139	89	62	279	178	124
12101-X01	Stringer Radius Drop, for Universal Cbl Rnwy	7.3	1.4	10.2		81	52	36	162	104	72
12101-X02	Stringer Radius Drop, for Telco Cbl Rnwy	5.8	1.4	8.1		64	41	29	129	83	57
12101-X03	Stringer Radius Drop, for Cable Runway	3.0	1.4	4.2		33	21	15	67	43	30
12170-X06	Quick Ship Cbl Rnwy Kit, 1.5"H x 6"W x 4'-6"L	6.0	6.0	36		286	183	127	573	367	255
12170-X09	Quick Ship Cbl Rnwy Kit, 1.5"H x 9"W x 4'-6"L	9.0	6.0	54		430	275	191	859	550	382
12170-X12	Quick Ship Cbl Rnwy Kit, 1.5"H x 12"W x 4'-6"L	12.0	6.0	72		573	367	255	1146	733	509
31472-X06	Alt Space Cbl Rnwy, 1.5"H x 6"W x 8'-8.75"L	6.0	6.0	36		286	183	127	573	367	255
31472-X12	Alt Space Cbl Rnwy, 1.5"H x 12"W x 8'-8.75"L	12.0	6.0	72		573	367	255	1146	733	509
31472-X18	Alt Space Cbl Rnwy, 1.5"H x 18"W x 8'-8.75"L	18.0	6.0	108		859	550	382	1719	1100	764
31472-X24	Alt Space Cbl Rnwy, 1.5"H x 24"W x 8'-8.75"L	24.0	6.0	144		1146	733	509	2292	1467	1019

Fill Ratio is the percentage of Usable Area filled by cables including the gaps between cables. Fill for double-sided (DS) cable managers is listed in two rows (Front/Rear).

Estimated Cable Fill Capacities for CPI Cable Management and Pathway Products

Part Number	Description	Cable Manager Specs.			Cable OD (in.) Fill Ratio	Recommended Cable Fill			Maximum Cable Fill		
		Interior Width (in.)	Interior Depth (in.)	Usable Area (sq. in.)		Cat 5e	Cat 6	Cat 6a	Cat 5e	Cat 6	Cat 6a
						0.200	0.250	0.300	0.200	0.250	0.300
OnTrac® Wire Mesh Cable Tray Products											
(Maximum fill is equivalent to TIA recommendations - 50% at tray height. OnTrac Cable Tray has 2", 4" or 6" high side walls. Cable should not exceed the height of the tray.)											
34811-X04	OnTrac Standard Cable Tray, 2"H x 4"W x 10'L	4.1	2.0	8.2		65	42	29	131	84	58
34811-X06	OnTrac Standard Cable Tray, 2"H x 6"W x 10'L	6.2	2.0	12.4		99	63	44	197	126	88
34811-X08	OnTrac Standard Cable Tray, 2"H x 8"W x 10'L	8.3	2.0	16.6		132	85	59	264	169	117
34811-X12	OnTrac Standard Cable Tray, 2"H x 12"W x 10'L	12.4	2.0	24.8		197	126	88	395	253	175
34811-X16	OnTrac Standard Cable Tray, 2"H x 16"W x 10'L	16.7	2.0	33.4		266	170	118	532	340	236
34811-X18	OnTrac Standard Cable Tray, 2"H x 18"W x 10'L	18.8	2.0	37.6		299	191	133	598	383	266
34811-X20	OnTrac Standard Cable Tray, 2"H x 20"W x 10'L	20.9	2.0	41.8		333	213	148	665	426	296
34811-X24	OnTrac Standard Cable Tray, 2"H x 24"W x 10'L	25.1	2.0	50.2		399	256	178	799	511	355
34821-X04	OnTrac Standard Cable Tray, 4"H x 4"W x 10'L	3.9	4.0	15.6		124	79	55	248	159	110
34821-X06	OnTrac Standard Cable Tray, 4"H x 6"W x 10'L	5.9	4.0	23.6		188	120	83	376	240	167
34821-X08	OnTrac Standard Cable Tray, 4"H x 8"W x 10'L	7.9	4.0	31.6		251	161	112	503	322	224
34821-X12	OnTrac Standard Cable Tray, 4"H x 12"W x 10'L	11.8	4.0	47.2		376	240	167	751	481	334
34821-X16	OnTrac Standard Cable Tray, 4"H x 16"W x 10'L	15.9	4.0	63.6		506	324	225	1012	648	450
34821-X18	OnTrac Standard Cable Tray, 4"H x 18"W x 10'L	17.9	4.0	71.6		570	365	253	1140	729	506
34821-X20	OnTrac Standard Cable Tray, 4"H x 20"W x 10'L	19.9	4.0	79.6		633	405	282	1267	811	563
34821-X24	OnTrac Standard Cable Tray, 4"H x 24"W x 10'L	23.9	4.0	95.6		761	487	338	1522	974	676
34831-X08	OnTrac Standard Cable Tray, 6"H x 8"W x 10'L	7.9	6.0	47.4		377	241	168	754	483	335
34831-X12	OnTrac Standard Cable Tray, 6"H x 12"W x 10'L	11.8	6.0	70.8		563	361	250	1127	721	501
34831-X16	OnTrac Standard Cable Tray, 6"H x 16"W x 10'L	15.9	6.0	95.4		759	486	337	1518	972	675
34831-X18	OnTrac Standard Cable Tray, 6"H x 18"W x 10'L	17.9	6.0	107.4		855	547	380	1709	1094	760
34831-X20	OnTrac Standard Cable Tray, 6"H x 20"W x 10'L	19.9	6.0	119.4		950	608	422	1900	1216	845
34831-X24	OnTrac Standard Cable Tray, 6"H x 24"W x 10'L	23.9	6.0	143.4		1141	730	507	2282	1461	1014
36811-X04	OnTrac Shaped Cable Tray, 2"H x 4"W x 10'L	4.1	2.0	8.2		65	42	29	131	84	58
36811-X06	OnTrac Shaped Cable Tray, 2"H x 6"W x 10'L	6.2	2.0	12.4		99	63	44	197	126	88
36811-X08	OnTrac Shaped Cable Tray, 2"H x 8"W x 10'L	8.3	2.0	16.6		132	85	59	264	169	117
36811-X12	OnTrac Shaped Cable Tray, 2"H x 12"W x 10'L	12.4	2.0	24.8		197	126	88	395	253	175
36811-X16	OnTrac Shaped Cable Tray, 2"H x 16"W x 10'L	16.7	2.0	33.4		266	170	118	532	340	236
36811-X18	OnTrac Shaped Cable Tray, 2"H x 18"W x 10'L	18.8	2.0	37.6		299	191	133	598	383	266
36811-X20	OnTrac Shaped Cable Tray, 2"H x 20"W x 10'L	20.9	2.0	41.8		333	213	148	665	426	296
36811-X24	OnTrac Shaped Cable Tray, 2"H x 24"W x 10'L	25.1	2.0	50.2		399	256	178	799	511	355
36821-X04	OnTrac Shaped Cable Tray, 4"H x 4"W x 10'L	3.9	4.0	15.6		124	79	55	248	159	110
36821-X06	OnTrac Shaped Cable Tray, 4"H x 6"W x 10'L	5.9	4.0	23.6		188	120	83	376	240	167
36821-X08	OnTrac Shaped Cable Tray, 4"H x 8"W x 10'L	7.9	4.0	31.6		251	161	112	503	322	224

Fill Ratio is the percentage of Usable Area filled by cables including the gaps between cables. Fill for double-sided (DS) cable managers is listed in two rows (Front/Rear).

Estimated Cable Fill Capacities for CPI Cable Management and Pathway Products

Part Number	Description	Cable Manager Specs.			Cable OD (in.) Fill Ratio	Recommended Cable Fill			Maximum Cable Fill		
		Interior Width (in.)	Interior Depth (in.)	Usable Area (sq. in.)		Cat 5e	Cat 6	Cat 6a	Cat 5e	Cat 6	Cat 6a
						0.200	0.250	0.300	0.200	0.250	0.300
36821-X12	OnTrac Shaped Cable Tray, 4"H x 2"W x 10'L	11.8	4.0	47.2		376	240	167	751	481	334
36821-X16	OnTrac Shaped Cable Tray, 4"H x 16"W x 10'L	15.9	4.0	63.6		506	324	225	1012	648	450
36821-X18	OnTrac Shaped Cable Tray, 4"H x 8"W x 10'L	17.9	4.0	71.6		570	365	253	1140	729	506
36821-X20	OnTrac Shaped Cable Tray, 4"H x 20"W x 10'L	19.9	4.0	79.6		633	405	282	1267	811	563
36821-X24	OnTrac Shaped Cable Tray, 4"H x 24"W x 10'L	23.9	4.0	95.6		761	487	338	1522	974	676
36831-X08	OnTrac Shaped Cable Tray, 6"H x 8"W x 10'L	7.9	6.0	47.4		377	241	168	754	483	335
36831-X12	OnTrac Shaped Cable Tray, 6"H x 12"W x 10'L	11.8	6.0	70.8		563	361	250	1127	721	501
36831-X16	OnTrac Shaped Cable Tray, 6"H x 16"W x 10'L	15.9	6.0	95.4		759	486	337	1518	972	675
36831-X18	OnTrac Shaped Cable Tray, 6"H x 18"W x 10'L	17.9	6.0	107.4		855	547	380	1709	1094	760
36831-X20	OnTrac Shaped Cable Tray, 6"H x 20"W x 10'L	19.9	6.0	119.4		950	608	422	1900	1216	845
36831-X24	OnTrac Shaped Cable Tray, 6"H x 24"W x 10'L	23.9	6.0	143.4		1141	730	507	2282	1461	1014
Notes:	<p>This table lists estimated cable fill for CPI cable management and pathway products. Cable fill varies with different cable sizes. Cable fills are estimates based on .20" OD Cat 5e, .25" OD Cat 6, and .30" OD Cat 6a, 4-pair UTP horizontal cable. Cable fill varies with different size cables. Use the Cat 5e value to estimate fill for 6-strand fiber. Use the Cat 6 value to estimate fill for 12-strand fiber. Cable Runway/Tray Recommended/Maximum Cable Fills are based on TIA-569 recommendations and 5' (runway)/6' (tray) support spacing. The X in part numbers is color or another variable that does not affect cable fill capacities. Refer to the CPI Mini-Catalog for available options.</p> <p>To calculate recommended cable fills for other size cables, divide the product's usable area by the area of the cable and multiply by 25% (50% for maximum fill). While every effort has been made to ensure the accuracy of all information, CPI does not accept liability for any errors or omissions and reserves the right to change information and descriptions of listed services and products.</p> <p>©2012 Chatsworth Products. All rights reserved. CPI, CPI Passive Cooling, GlobalFrame, MegaFrame, Saf-T-Grip, Seismic Frame, SlimFrame, TeraFrame, Cube-iT Plus, Evolution, OnTrac, Velocity and QuadraRack are federally registered trademarks of Chatsworth Products, Inc.. eConnect and Simply Efficient is a trademarks of Chatsworth Products, Inc. All other trademarks belong to their respective companies.</p>										

Using the CPI CABLE FILL TABLE:

Change the OD (outside diameter) of the cable or the fill ratio on the table to estimate fills for your application. Fill ratio is the percentage of Usable Area within the manager filled with cable including gaps between cables.

Method of Calculation

Cable Fill is calculated by dividing the usable area of the cable manager by the area of the cable and reducing by a 50% fill factor to allow for gaps between the cables.

The basic calculation for estimating recommended cable fill for cable managers and cable pathway is:

$$\text{RECOMMENDED CABLE FILL} = ((\text{USABLE AREA}/\text{AREA OF CABLE}) \times 50\%) \times 50\%$$

50% is the fill ratio (25% of the manager is filled with cable. 25% is required space between cables.)

The basic calculation for estimating maximum cable fill for cable managers and cable pathway is:

$$\text{MAXIMUM CABLE FILL} = ((\text{USABLE AREA}/\text{AREA OF CABLE}) \times 50\%) \times 100\%$$

100% is the fill ratio. (50% of the manager is filled with cable. 50% is required air space between cables.)

USABLE AREA is the Usable Area of the cable manager or pathway product.

Usable Area is determined by measuring the internal width and depth of individual cable managers or pathway as illustrated on the following pages. The CPI Cable Fill table lists usable areas for CPI cable management and pathway products.

The area of a rectangular space is calculated by multiplying the width by the depth. In some cases the width of the manager varies:

$$\text{USABLE AREA} = \text{INTERIOR WIDTH} \times \text{INTERIOR DEPTH}$$

AREA OF CABLE is the area of the cable. The table assumes round cables.

The area of the cable is calculated using the dimensions of the cable.

To determine the values in the CPI Cable Fill table, average cable sizes are used to represent each type of cable:

- Cat 5e is .20" diameter cable (.031" area)
- Cat 6 is .25" diameter cable (.049" area)
- Cat 6a is .30" diameter cable (.070" area)

The area of a round cable is calculated by multiplying PI and the diameter of the cable squared divided by 4:

$$\text{(ROUND) CABLE AREA} = (\text{DIAMETER}^2 \times \text{PI})/4$$

FILL RATIO is the percentage of Usable Area within the manager that is filled with cable including required gaps between cables.

CABLE FILL is the calculated cable fill value. This value is an estimate and includes gaps between cables. Use 100% fill ratio to estimate maximum fill. Use 50% fill ratio to estimate initial fill. This estimate represents loose cables, not bundled cables. The value will be less for bundled cables.

Sample Cable Fill Calculation:

Calculate cable fill of .30"OD Cat 6a UTP in CPI Cable Manager P/N 11730-703.

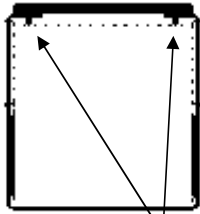
CPI P/N 11730-XXX has a usable area of 21.0 in²
.30" OD Cable has an area of .070 in² (Area = [.30]² X Pi/4)

RECOMMENDED CABLE FILL = ((USABLE AREA/AREA OF CABLE) X 50%) X 50%
RECOMMENDED CABLE FILL = (21.0 in²/.070 in²) X 50%) X 50%
RECOMMENDED CABLE FILL = 75 cables

MAXIMUM CABLE FILL = ((USABLE AREA/AREA OF CABLE) X 50%) X 100%
MAXIMUM CABLE FILL = (21.0 in²/.070 in²) X 50%) X 100%
MAXIMUM CABLE FILL = 150 cables

Usable Area defined for various types of cable managers.

The hatched areas represent the defined usable area for different types of CPI Cable Managers.



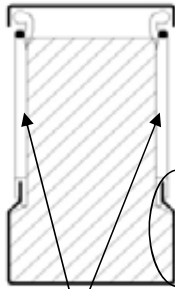
Latch pins

Vertical Cable Managers & Rings/Loops

(no fingers)

Usable area is defined between the narrowest point in width and the distance between the back of the manager and the back of the latch pins.

Ex. VCS
Loops
Rings



Fingers

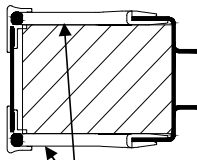
Vertical Cable Managers

(with fingers)

Usable area is defined between the narrowest point in width and the distance between the back of the manager and the back of the T on the fingers.

Area includes this space.

Ex. MCS, MCS-EFX,
CCS, CCS-EFX,
Velocity Cable Management
Evolution Cable Management
M-Series MegaFrame ECM
F-Series TeraFrame VCM
GlobalFrame VCM
Finger Cable Manager



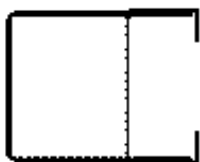
Fingers

Universal Horizontal Cable Managers

(with fingers)

Usable area is defined between the narrowest point in height and the distance between the back of the manager and the back of the T on the fingers.

Ex. UHCM
Velocity Cable Management
Evolution Cable Management



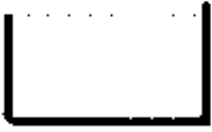
Rings

Horizontal Wire Managers with Rings/Loops

(no fingers)

Usable area is defined between the narrowest point in height and the distance between the back of the manager and the front of the rings.

Ex. Horz. Cble Mngr.



Jumper Trays

(no fingers)

Usable area is defined between the narrowest point in height and the distance between the back of the manager and the front of the tray.

Ex. Jumper Trays

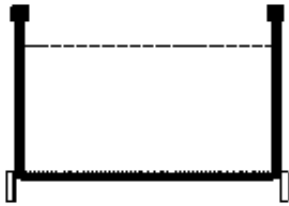


Cable Runway (& optional Cable Retaining Posts)

Usable area is defined by the width of the runway and a maximum 6" height. TIA-569B limits cable height to 6" (152 mm) and cable fill to 50%.

Ex. Universal
TELCO
UL Classified
Alternate Space
Quick Ship

*Cable Runway does **not** have side walls.
Add Cable Retaining Post (shown) when required.*

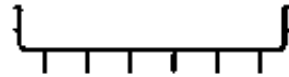


Trough Style Cable Runway

Usable area is defined by the width of the runway and a maximum 6" (152 mm) height. TIA-569B limits cable height to 6" (152 mm) and cable fill to 50%.

Ex. Trough

Trough Style Cable Runway has 8" high retaining posts.



OnTrac Wire Mesh Cable Tray

Usable area is defined by the width of the tray and the height of the tray, with a 6" (152 mm) max. height. TIA-569B limits cable height to 6" (152 mm) and cable fill to 50%.

Ex. OnTrac

OnTrac Cable Tray has 2", 4" or 6" high (50 mm, 100 mm or 150 mm) side walls.