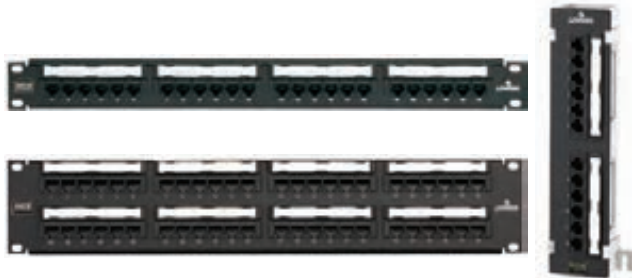


eXtreme® CAT 6+ Flat 110-Style Patch Panels

APPLICATION

eXtreme CAT 6+ Flat 110-Style Patch Panels are designed for use on 19" standard racks and cabinets. The patch panels include patented Retention Force Technology which promotes consistent performance over the life of the system. Installer-friendly design allows for quick installation due to standard 110 terminations on the rear of the panel which follows the normal installation color sequence (blue, orange, green, brown) from left to right. The eXtreme CAT 6+ system is designed for use in high megabit applications such as Gigabit Ethernet.



SPECIFICATION

The patch panel shall meet or exceed the requirements for Category 6 described in ANSI/TIA-568-C.2 as well as the Class E requirements described in ISO/IEC 11801. The panels shall feature both T568A and T568B wiring configurations, white IDC 110-punchdown modules, mounting standoffs for cable management bars and color-coded front window labeling. The panels shall have universal T568A and T568B wiring card for terminations. The panels shall be made of 16-gauge steel, and shall have a black painted finish with white silk-screening. The plastic elements shall be fire-retardant with a UL flammability rating of 94V-0. The panel shall be offered in 12-, 24-, 48-, 96-port configurations as well as an 89D 12-port configuration. The patch panel shall be configured with six port modules. The 110 termination on the rear of the panel shall follow normal installation color sequence (blue, orange, green, brown) from left to right.

Page 1 of 2

FEATURES

- Patented Retention Force Technology protects ties from damage from 4- or 6-pin plugs
- Craft-friendly installation
- Universal T568A and T568B wiring cards for 110-style IDC terminations
- Color-coded front labeling for easy port identification (ANSI/TIA-606-B compliant)
- Terminates 26-22 AWG solid conductors
- Centralized labeling (available on 48-Port) promotes greater visibility of labels when patch cords are routed into horizontal cable management above and below the patch panel
- Capable of multiple reterminations

DESIGN CONSIDERATIONS

- Mounts on 19" equipment racks
- Panel offered in 12-, 24-, 48-, 96-Port configurations and 12-Port U89 Block for wall mount applications
- Connector modules are in groups of six
- Includes rear cable management bars
- Use star washers for grounding in rack mount installations

STANDARDS COMPLIANCE

ANSI/TIA-568-C.2
ISO/IEC 11801
ANSI/TIA-1096-A (formerly FCC Part 68)
cULus Listed

PHYSICAL SPECIFICATIONS

Dimensions: See page 2
Capacity: 12, 24, 48, 96-port,
U-89 Universal 12-port block
Materials: 16-gauge steel, painted black; PCB and plastic components are rated per UL 94V-0

COUNTRY OF ORIGIN

USA

WARRANTY INFORMATION

For a copy of Leviton product warranties, visit www.leviton.com/warranty.

69586-Uxx 69586-C48

Leviton Network Solutions
2222 - 222nd St. SE
Bothell, WA 98021-4416

tel 1-800-824-3005
tel +1-425-486-2222
appeng@leviton.com
www.leviton.com

Asia / Pacific
T +1.631.812.6228
E infoasean@leviton.com

Europe
T +33.6.8869.1380
E infoeurope@leviton.com

Canada
T +1.514.954.1840
E pcservice@leviton.com

India / SAARC
T +91.80.4322.5678
E infoindia@leviton.com

Caribbean
T +1.954.593.1896
E infocaribbean@leviton.com

Mexico
T +52.55.5082.1040
E lsamarketing@leviton.com

China
T +852.2774.9876
E infochina@leviton.com

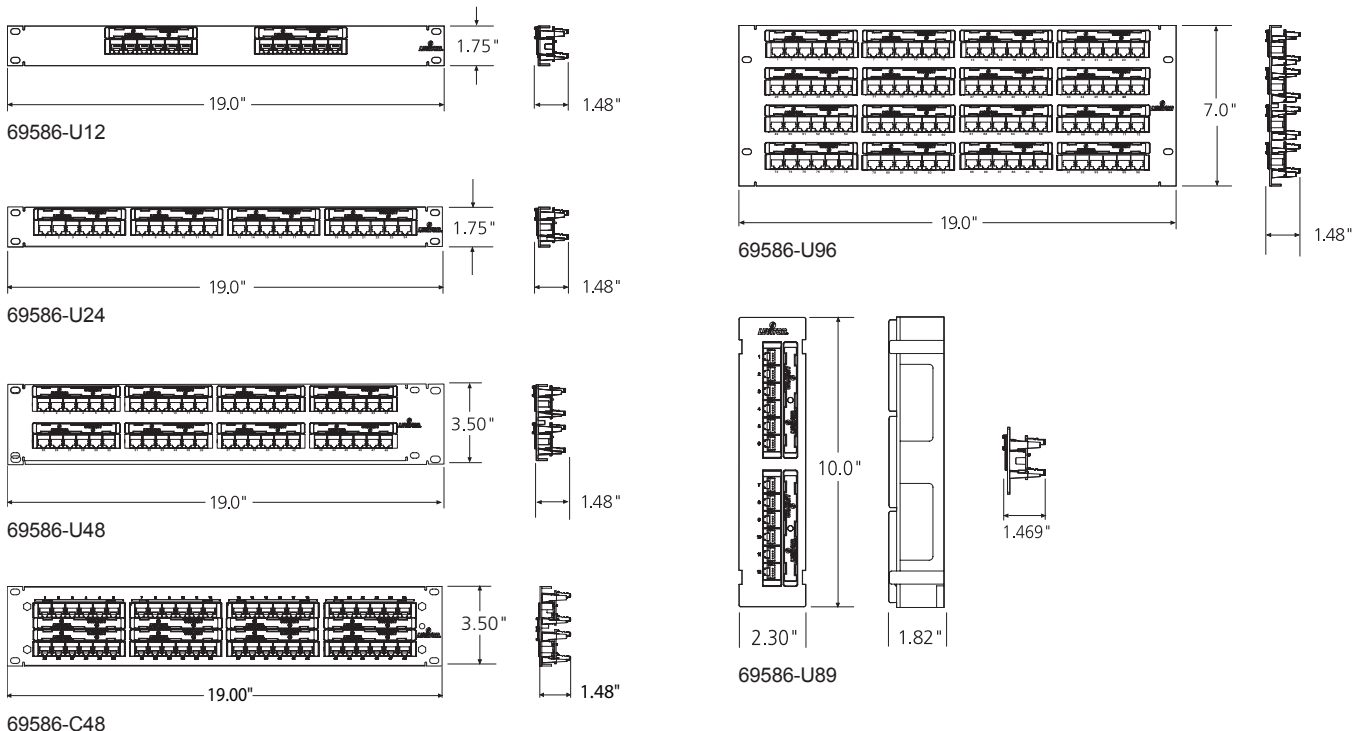
Middle East & Africa
T +971.4.886.4722
E lmeinfo@leviton.com

Colombia
T +57.1.743.6045
E infocolombia@leviton.com

South Korea
T +82.2.3273.9963
E infokorea@leviton.com

ELECTRONIC FILES

For CAD files, typical specs, or technical drawings (.DXF, .DWG), visit www.leviton.com.



69586-Uxx 69586-C48

TIA-568-C.2 CAT 6 PARAMETERS	Connecting Hardware Requirements*	
	@ 100MHz	@ 250MHz
Insertion Loss (IL)	0.20	0.32
Near-end Crosstalk (NEXT)	54.0	46.0
Far-end Crosstalk (FEXT)	43.1	35.1
Return Loss (RL)	24.0	16.0
Transverse Conversion Loss (TCL)	28.0	20.0
Transverse Conversion Transfer Loss (TCTL)	28.0	20.0

*All requirements are minimum allowable except IL requirements are maximum allowable. Connecting hardware shall meet requirements of all parameters from 1-250 MHz. Values in above table are only at specific frequencies and are for references only.

PART NUMBERS	
Description	Part No.
eXtreme® CAT 6+ Flat 110-Style Patch Panel, 12-Port, 1RU	69586-U12
eXtreme CAT 6+ Flat 110-Style Patch Panel, 24-Port, 1RU	69586-U24
eXtreme CAT 6+ Flat 110-Style Patch Panel, 48-Port, 2RU	69586-U48
eXtreme CAT 6+ Flat 110-Style Patch Panel, 48-Port, 2RU, centralized labeling	69586-C48
eXtreme 6+ CAT 6 110-Style Patch Panel, 96-Port, 4RU	69586-U96
eXtreme 6+ CAT 6 110-Style Patch Block, 12-Port	69586-U89



Leviton Network Solutions 2222 - 222nd St. SE Bothell, WA 98021-4416 tel 1-800-824-3005 tel +1-425-486-2222 appeng@leviton.com www.leviton.com	Asia / Pacific T +1.631.812.6228 E infoasean@leviton.com	Canada T +1.514.954.1840 E pcservice@leviton.com	Caribbean T +1.954.593.1896 E infocaribbean@leviton.com	China T +852.2774.9876 E infochina@leviton.com	Colombia T +57.1.743.6045 E infocolombia@leviton.com
	Europe T +33.6.8869.1380 E infoeurope@leviton.com	India / SAARC T +91.80.4322.5678 E infoindia@leviton.com	Mexico T +52.55.5082.1040 E lsamarketing@leviton.com	Middle East & Africa T +971.4.886.4722 E lmeinfo@leviton.com	South Korea T +82.2.3273.9963 E infokorea@leviton.com