

QuickPort® Stainless Steel Wallphone Wallplate

APPLICATION

Leviton's QuickPort Stainless Steel Wallphone Wallplates are designed with rivets to support a variety of wall-mount telephones while offering field-configurable flexibility. Single-port opening accepts QuickPort snap-in Connectors and Adapters to support a variety of commercial and residential applications. The wallplates are available in flush or recessed versions; the flush version allows the QuickPort Connector to rest flush with the wallplate; the recessed version allows the connector to extend out from the plate and fit cleanly with a telephone's slide rail mechanism.



SPECIFICATION

The stainless steel wallphone wallplate shall meet all applicable standards: cULus listed and meet FCC part 68. It shall be constructed with Type 302 stainless steel, fit minimum rectangular NEMA openings and accept all QuickPort Snap-in Connectors and Adapters. It shall be available in recessed and flush designs.

DESIGN CONSIDERATIONS

- Accepts all QuickPort Snap-in Connectors and Adapters
- Stainless steel plate is durable and corrosion resistant
- Fits minimum rectangular NEMA openings.
- Available in recessed and flush designs.

STANDARDS COMPLIANCE

Meets all applicable standards: cULus listed; complies with TIA/EIA-570-A.

PHYSICAL SPECIFICATIONS

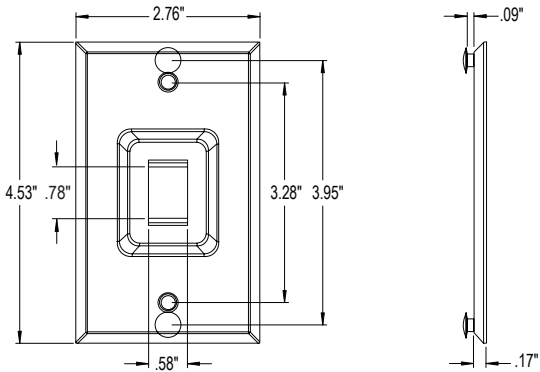
Dimensions: 4.53"H x 2.76"W x 0.17"D
Materials: Type 302 Stainless Steel
Capacity: Single-gang, 1-port Version
(flush and recessed)

WARRANTY INFORMATION

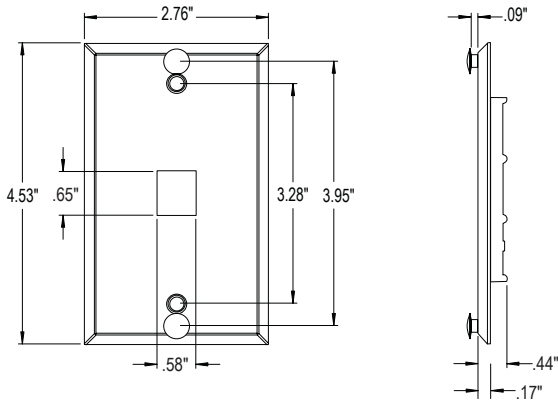
For a copy of Leviton product warranties, visit www.leviton.com.

ELECTRONIC FILES

For CAD files, typical specs, or technical drawings (.DXF, .DWG), visit www.leviton.com.



4108W-1SP



4108W-0SP

4108W-xSP

PART NUMBERS	
Description	Part No.
QuickPort Single-gang Wallphone Wallplate (Recessed, 1-Port)	4108W-1SP
QuickPort Single-gang Wallphone Wallplate (Flush, 1-Port)	4108W-0SP

