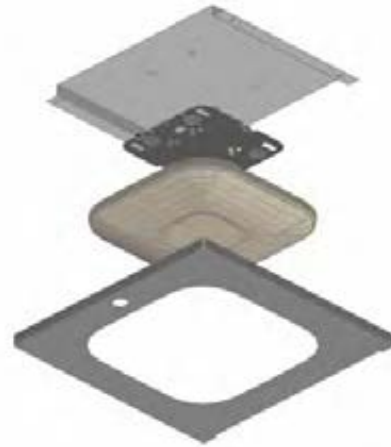


## Model 38-53-1140/3500

## Adaptor Doors

Oberon's Model 1053-00 wireless LAN access point enclosure is a locking 2' x 2' ceiling tile enclosure originally designed for the Cisco 1250 series wireless access points. With many Cisco customers making the migration from the Cisco 1250 series to the Cisco 1040/1140/1260/3500/3600 series 802.11n wireless access point, Oberon has designed the 38-53-1140/3500 adaptor door so that customers may install the new access point in the existing enclosure, without removing the enclosure from the ceiling. The upgrade simply requires that the existing 1053-00 door is removed (three interior nuts), the new access point is attached to the adaptor door, and the adaptor door is attached to the enclosure. The upgrade maintains the enclosure's UL 50 design criteria, and provides the same level of physical security as previously provided. Upgrades are performed without accessing the air handling space above the ceiling.



1) Model 1053-00 shown with 38-53-1140/3500 and Cisco 1142 AP (not included) 2) Exploded view of the door, access point, access point mounting bracket, and assembly mount bracket

### Specifications:

- Adaptor door designed to mount the Cisco 1040/1140/1260/3500/3600 series 802.11n wireless access point into existing Oberon Model 1053-00 ceiling tile enclosures
- Use Cisco AIR-AP-BRACKET-1 for 3600 series and AIR-AP-BRACKET-2 for 3500 series
- With adaptor door properly installed, the assembly is UL listed and designed to meet NEC300-22 and 300-23 for plenum installations
- Construction: Textured white powder-coated steel, 14 ga. door
- Fully hinged locking door, keyed alike.
- Adaptor door is attached to enclosure with (3) nuts

### Model 38-53-1140/3500 Includes:

- Adaptor door
- Assembly mount bracket and nuts
- Installation instructions

